

Mains Transformer



<http://www.casa.co.nz>

Edition: 7/09/2011

Type: **30V-70mA-2VA-DW-D4572/1**

Stock #



12345-wizard.com

General Data

Brand: Astec (NZ?)

Model: D4572/1

Input: 230Vac 50Hz (not tapped)

Output: 30V @ 0.07A

Power: 2VA (estimated)

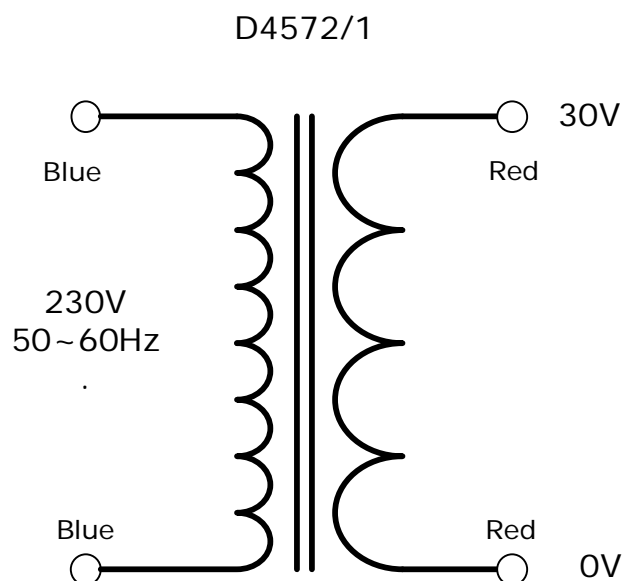
Size: 46x28x38mm (plus feet)

Weight: 0.18kg

Fixing: 2 x 3mm holes @ 53mm centres (nominal)

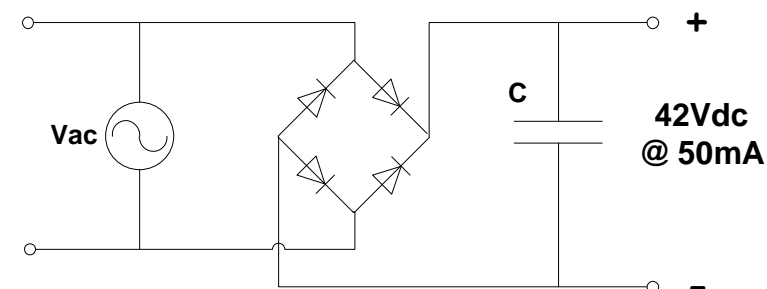
Condition: NEW#

Comments:



NOTICE – the information on this page is not guaranteed for accuracy – CASA accepts no responsibility (expressed or implied) for any errors or the consequence therefrom.

Optional Rectifier Assembly



Basic Un-Regulated DC PSU – Quick Calculator

$$C = (I \times 80,000) / V_{dc}$$
$$(0.05 \times 80,000) / 42 = \sim 90\mu F$$

C = Capacitor in microFarads
I = Current (output) in Amps
Vdc = Volts (output)

P = Power of load (or transformer) in Watts (VoltAmps)
Vac = input Volts from transformer
Vdc = Vac x 1.4 (using a full-bridge rectifier)

Two or more identical transformers may be series-parallel arranged for higher currents and/or voltages (phasing observed)

NOTE – these approximations exclude copper losses etc. in the transformer and external wiring