

Mains Transformer



<http://www.casa.co.nz>

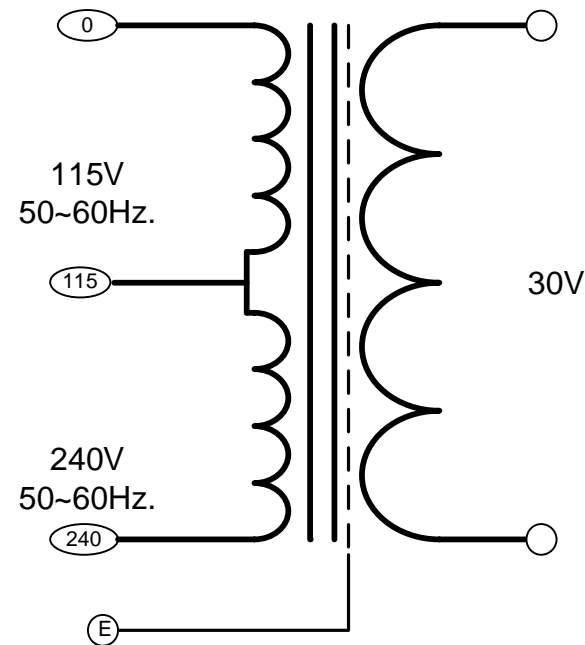
Edition: 09/07/2011

Type: **30V-7A-DW-SEL-3126**



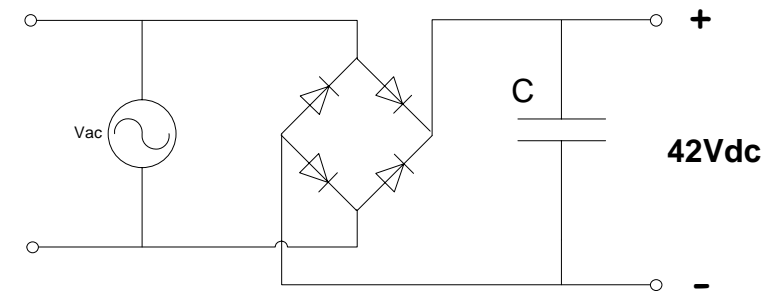
12045-wizard.com

SEL-3126



NOTICE – the information on this page is not guaranteed for accuracy – CASA accepts no responsibility (express or implied) for any errors or the consequence therefrom.

Optional Rectifier Assembly



Basic Un-Regulated DC PSU – Quick Calculator

$$C = (I \times 80,000) / V_{dc}$$
$$(7 \times 80,000) / 42 = 13,000\mu F$$

C = Capacitor in microFarads
I = Current (output) in Amps
V_{dc} = Volts (output)

P = Power of load (or transformer) in Watts (VoltAmps)

V_{ac} = input Volts from transformer

V_{dc} = V_{ac} x 1.4 (using a full-bridge rectifier)

Two or more identical transformers may be series-parallel arranged for higher currents and/or voltages (phasing observed)

NOTE – these approximations exclude copper losses etc. in the transformer and external wiring