

Mains Transformer



<https://www.casa.co.nz>

Edition: 23/10/2023

<https://www.casa.co.nz/transformers/>

Type: **30V~16V-CT-10VA-DW-61317**



Not registered

Stock #

DRAFT

General Data

Brand: Arlec (Aussie)

Model: 61317

Input: 230Vac 50Hz (not tapped)

Output: 15-8-0-8-15V @ ____A

Power: 10VA (estimated)

Size: 60x50x50mm (plus feet)

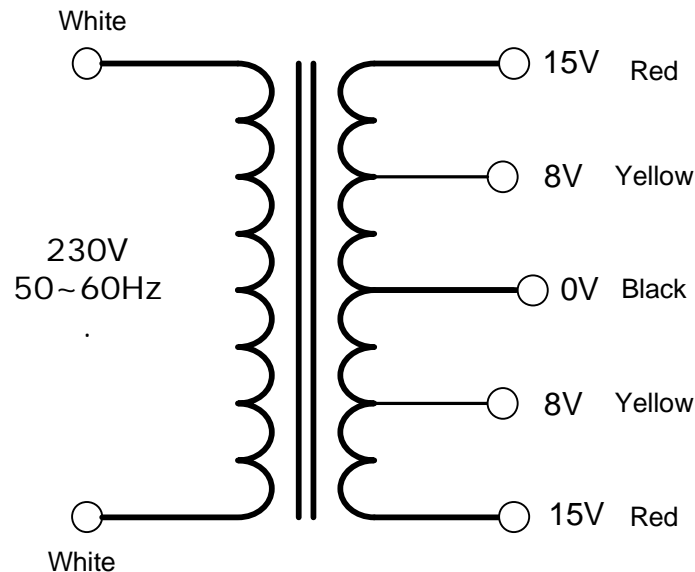
Weight: 0.47kg

Fixing: 2 x 5mm holes @ 70mm centres (nominal)

Comments: may have 2 x ¼" QC recepticals on the primary leads.

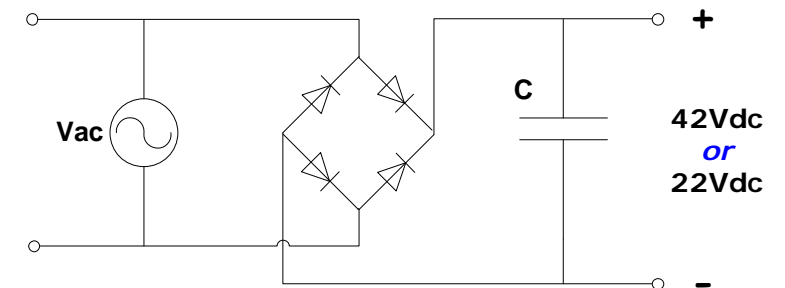
Biphase rectification will yield 21Vdc and/or 11Vdc

61317



NOTICE – the information on this page is not guaranteed for accuracy – CASA accepts no responsibility (expressed or implied) for any errors or the consequence therefrom.

Optional Rectifier Assembly



Basic Un-Regulated DC PSU – Quick Calculator

$$C = (I \times 80,000) / V_{dc}$$
$$(0.24 \times 80,000) / 42 = 470\mu F$$

or

$$(0.45 \times 80,000) / 22 = 1600\mu F$$

C = Capacitor in microFarads

I = Current (output) in Amps

Vdc = Volts (output)

P = Power of load (or transformer) in Watts (VoltAmps)

Vac = input Volts from transformer

Vdc = Vac x 1.4 (using a full-bridge rectifier)

Two or more identical transformers may be series-parallel arranged for higher currents and/or voltages (phasing observed)

NOTE – these approximations exclude copper losses etc. in the transformer and external wiring