



Mains Transformer



<http://www.casa.co.nz>

Edition: 13/09/2011

Type: **32V-100VA-DW-RESTRAN**

Stock #
313

General Data

Brand: Restran (NZ)

Model: N/A

Input: 230Vac 50~60Hz (non-tapped)

Output: 32V @ 3A

Power: 100VA (labeled)

Size: 110x100x90mm

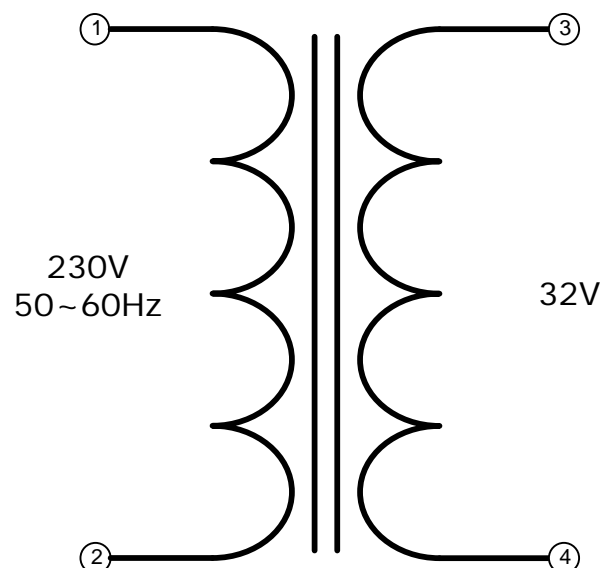
Weight: 3kg

Fixing: 4 x M4 holes @ 64 x 70mm centres (nominal)

Condition: Used/refurbished typically as represented in the images

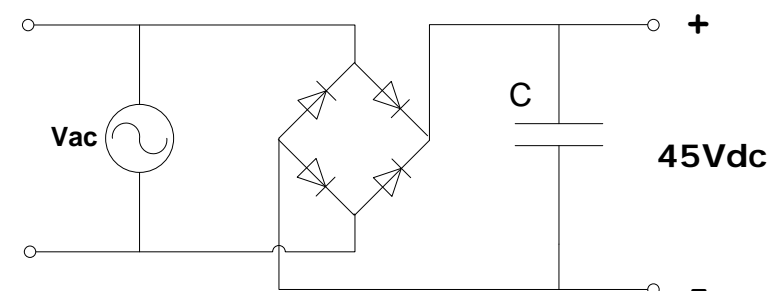
Comments: Ideal for isolated outdoor lighting systems etc. Screw-Terminal block on output.

Restran



NOTICE – the information on this page is not guaranteed for accuracy – CASA accepts no responsibility (expressed or implied) for any errors or the consequence therefrom.

Optional Rectifier Assembly



Basic Un-Regulated DC PSU – Quick Calculator

$$C = (I \times 80,000) / V_{dc}$$

$$(3 \times 80,000) / 45 = 5,333\mu F$$

C = Capacitor in microFarads
I = Current (output) in Amps
V_{dc} = Volts (output)

P = Power of load (or transformer) in Watts (VoltAmps)
Vac = input Volts from transformer
V_{dc} = Vac x 1.4 (using a full-bridge rectifier)

Two or more identical transformers may be series-parallel arranged for higher currents and/or voltages (phasing observed)

NOTE – these approximations exclude copper losses etc. in the transformer and external wiring