

Mains Transformer



<http://www.casa.co.nz>

Edition: 14/09/2011

Type: **53V-960VA-DW-3FN65515**

Stock #



Not registered

General Data

Brand: NA (?)

Model: 3FN65515

Input: 120+120Vac 50~60Hz

Output: 53V @ 18A

Power: 960VA (labeled)

Size: 165x175x135mm

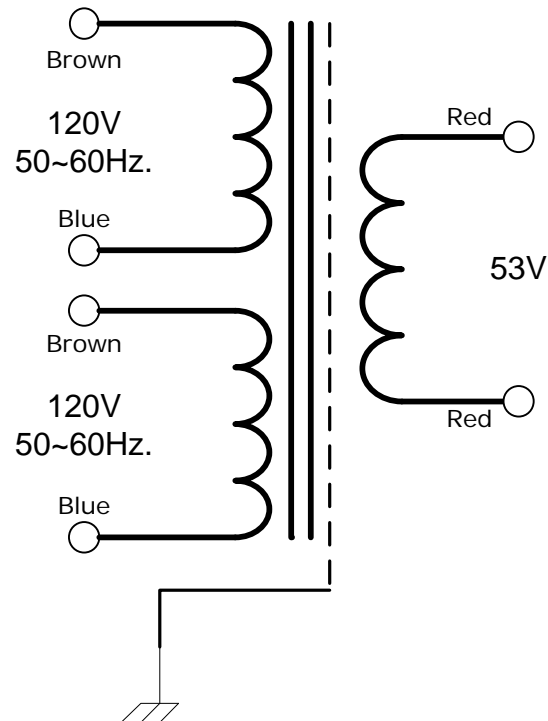
Weight: 15kg

Fixing: 4 x M8 holes @ 108 x 120mm centres (nominal)

Condition: re-furbished – as removed from de-commissioned equipment

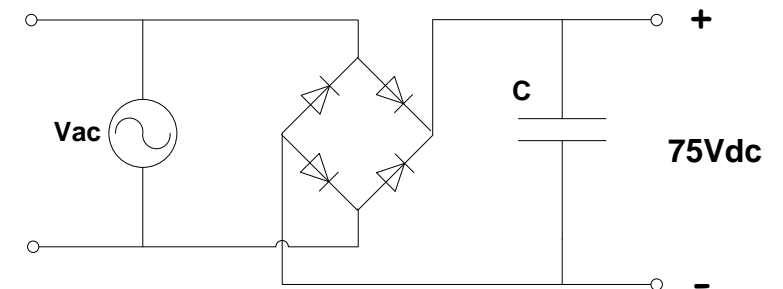
Comments: very nice – high quality – electrostatic screen

3 FN 655 15*
(TA 521 028 001)



NOTICE – the information on this page is not guaranteed for accuracy – CASA accepts no responsibility (expressed or implied) for any errors or the consequence therefrom.

Optional Rectifier Assembly



Basic Un-Regulated DC PSU – Quick Calculator

$$C = (I \times 80,000) / V_{dc}$$
$$(13 \times 80,000) / 75 = 13,600\mu F$$

C = Capacitor in microFarads
I = Current (output) in Amps
Vdc = Volts (output)

P = Power of load (or transformer) in Watts (VoltAmps)
Vac = input Volts from transformer
Vdc = Vac x 1.4 (using a full-bridge rectifier)

Two or more identical transformers may be series-parallel arranged for higher currents and/or voltages (phasing observed)

NOTE – these approximations exclude copper losses etc. in the transformer and external wiring