

Mains Transformer



<http://www.casa.co.nz>

Edition: 13/08/2011

Type: **68V-CT-800VA-DW-16325649**

Stock #:



General Data

Brand: ACDC (USA)

Model: 1632-5649

Input: 230Vac 50/60Hz
(tapped)

Output: 34-0-34V @ 10?A

Power: 800VA (estimated)

Size: 135x145x113mm
(LxWxHmm)

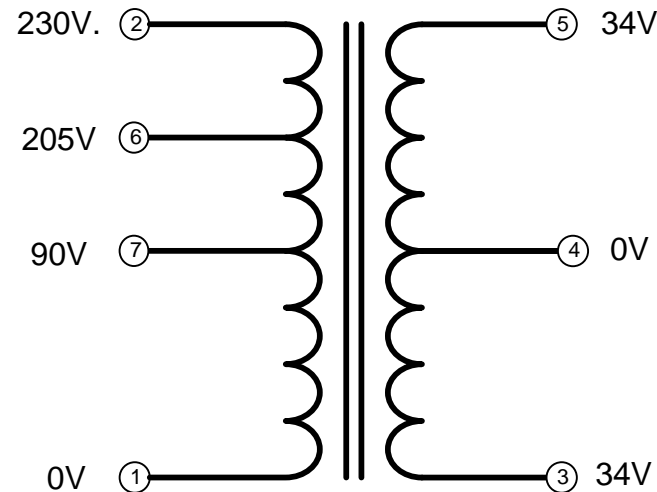
Weight: 11kg

Fixing: 4 x 6mm holes @ 120 x
110 mm centres (nominal)

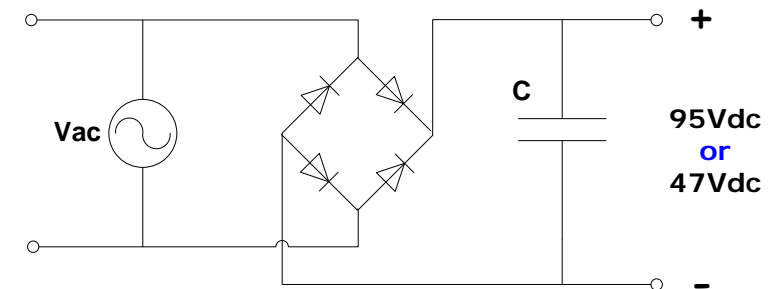
Condition: As new/refurbished
– removed from de-
commissioned equipment

Comments: fully compound
impregnated - may be used in
biphase for 95Vdc or full-wave
bridge configuration for 47Vdc

1632-5649



Optional Rectifier Assembly



Basic Un-Regulated DC PSU – Quick Calculator

$$C = (I \times 80,000) / V_{dc}$$
$$(10 \times 80,000) / 95 = 8,421\mu F$$

or

$$(10 \times 80,000) / 47 = 17,00\mu F$$

C = Capacitor in microFarads

I = Current (output) in Amps

Vdc = Volts (output)

P = Power of load (or transformer) in Watts (VoltAmps)

Vac = input Volts from transformer

Vdc = Vac x 1.4 (using a full-bridge rectifier)

Two or more identical transformers may be series-parallel
arranged for higher currents and/or voltages (phasing
observed)

NOTE – these approximations exclude copper losses etc.
in the transformer and external wiring

NOTICE – the information on this page is not guaranteed
for accuracy – CASA accepts no responsibility (express or
implied) for any errors or the consequence therefrom.