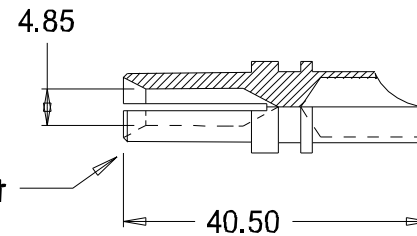
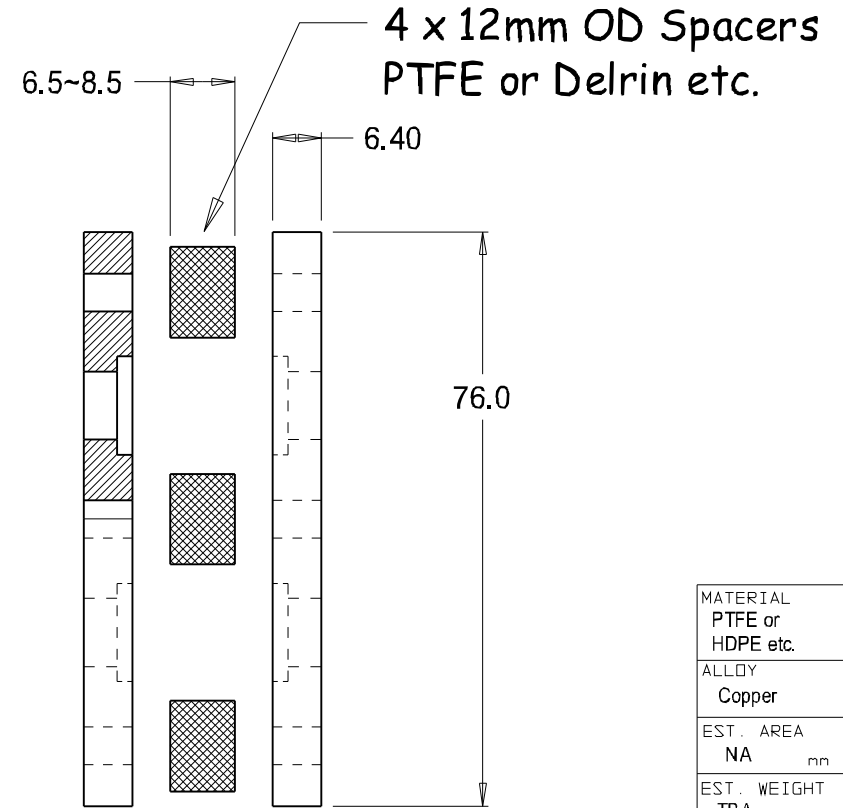
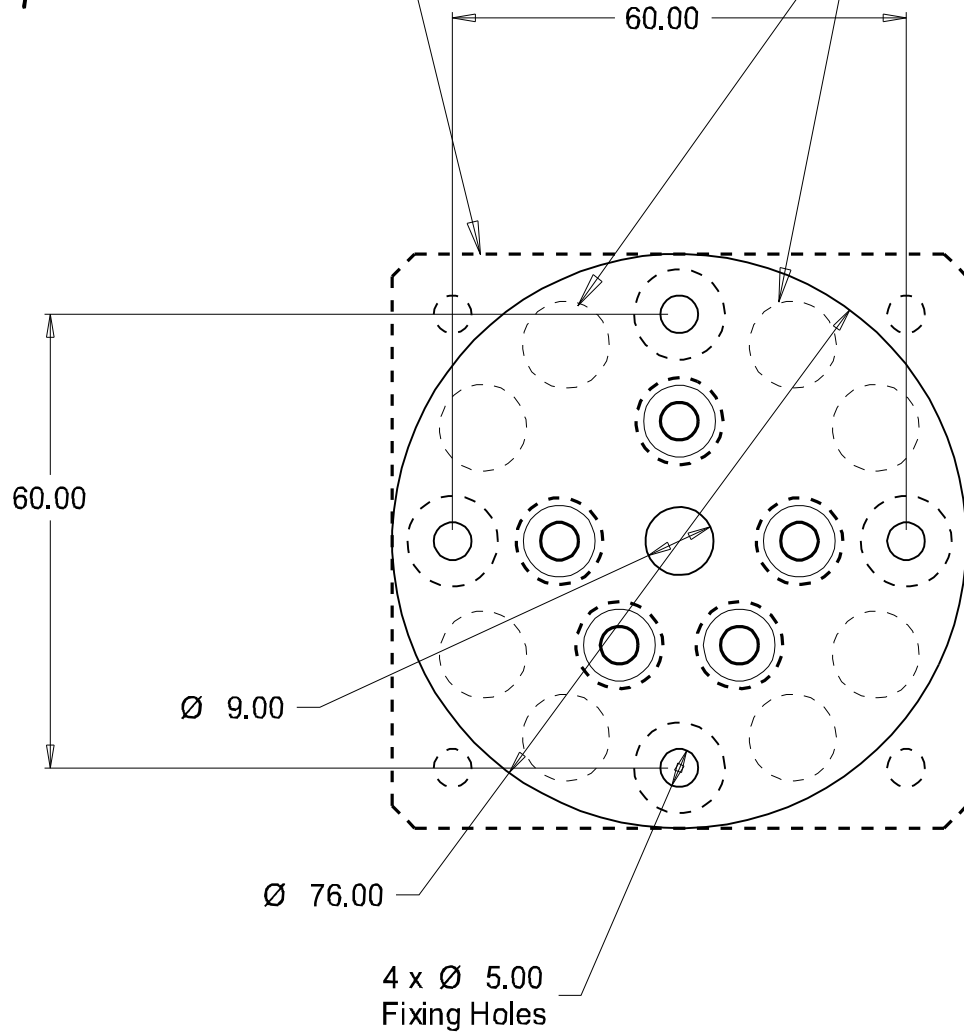


Optional 76mm Square Insulator

8 x Optional thru-ventilation holes (11.5~12mm diameter)



60 Amp rated compliant socket-contact (silver plated copper) Mil #4

Socket Assembly for:
3-500ZG (and similar).

MATERIAL	PTFE or HDPE etc.
ALLOY	Copper
EST. AREA	NA mm
EST. WEIGHT	TBA kg/m
EST. PERIPHERY	EXT: TBA mm
	TOT: TBA mm
TOLERANCE	0.00mm ±0.1mm 00.0mm ±0.25mm 0000mm ±0.5mm 0-600mm ±0.1mm > 600mm ±0.5mm
	BS1474:1987 APPLIES UNLESS OTHERWISE SPECIFIED
JOB No.	3000

<p>Petone 5012, WELLINGTON, NEW ZEALAND TELEPHONE : (64-4) 9393 777 WWW Address: www.casa.co.nz</p>	CUSTOMER : CASA Modular Systems		SIZE	DRAWING Reference No.	ISSUE
	DESCRIPTION : Socket PSK410 for 3-500 PowerTriode		A4	5Pin-Socket	A
DRAWN : A.W.D	DATE : 26/08/22	APPROVED : ?	DWG. SCALE : 1:1	© COPYRIGHT : CASA Modular Systems ALL RIGHTS RESERVED	