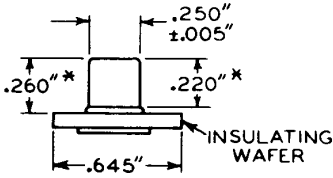




BASES

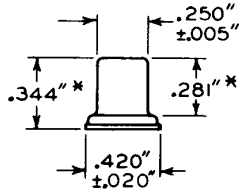
1-TERMINAL TYPES (CAPS)

MINIATURE WITH WAFER



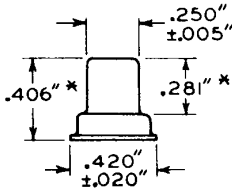
JETEC No. C1-4
RCA No. M399

SKIRTED MINIATURE



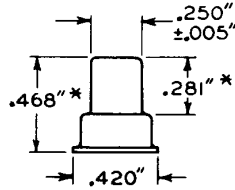
JETEC No. C1-3
RCA No. 3933

SKIRTED MINIATURE



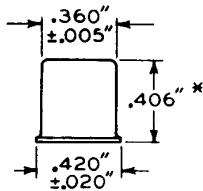
JETEC No. C1-2
RCA No. 3927

SKIRTED MINIATURE



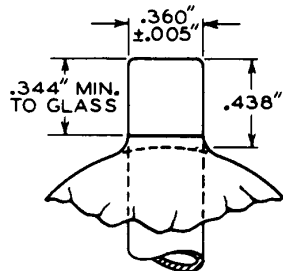
JETEC No. C1-33

SMALL



JETEC No. C1-1
RCA No. 3907

SMALL WITH TUBULAR SUPPORT



JETEC No. C1-34
RCA No. 3999

CONNECTOR SHOULD NOT EXERT MORE THAN 7 POUNDS RADIAL COMPRESSION AT ANY POINT AROUND THE CIRCUMFERENCE OF THE CAP.

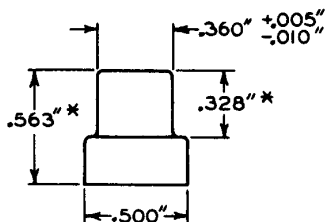
* Add 0.020" for solder on finished tube.



BASES

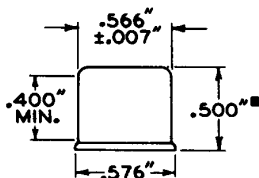
1-TERMINAL TYPES (CAPS)

SKIRTED SMALL



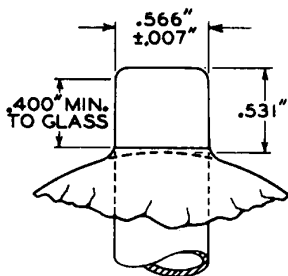
JETEC No. C1-22

MEDIUM



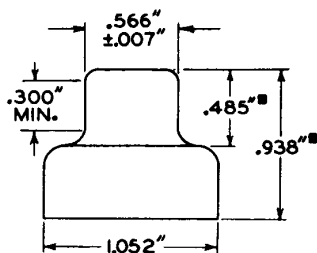
JETEC No. C1-5
RCA No. 3903

MEDIUM WITH TUBULAR SUPPORT



JETEC No. C1-39
RCA No. R7062

SKIRTED MEDIUM



JETEC No. C1-14
RCA No. 3980

CONNECTOR SHOULD NOT EXERT MORE THAN 10 POUNDS RADIAL COMPRESSION AT ANY POINT AROUND THE CIRCUMFERENCE OF THE CAP.

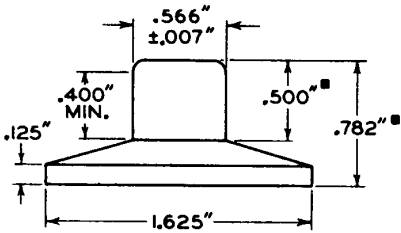
* Add 0.020" for solder on finished tube.
 ■ Add 0.040" for solder on finished tube.



BASES

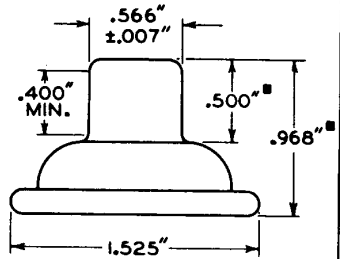
1-TERMINAL TYPES (CAPS)

SKIRTED MEDIUM



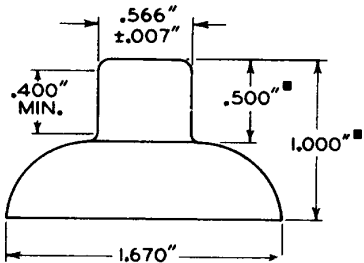
JEDEC No. C1-29

SKIRTED MEDIUM WITH ROLLED EDGE



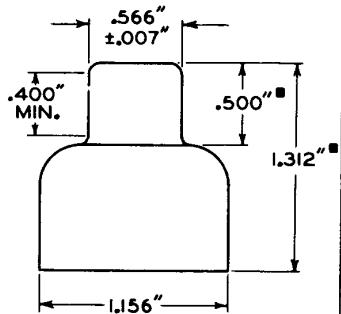
JEDEC No. C1-19
RCA No. 3940

SKIRTED MEDIUM



JEDEC No. C1-27
RCA No. 3985

SKIRTED MEDIUM



JEDEC No. C1-6
RCA No. 3904

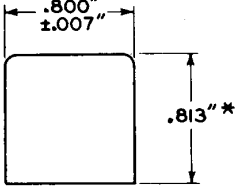
■ Add 0.040" for solder on finished tube.



BASES

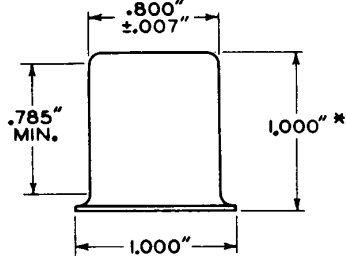
1-TERMINAL TYPES (CAPS)

LARGE



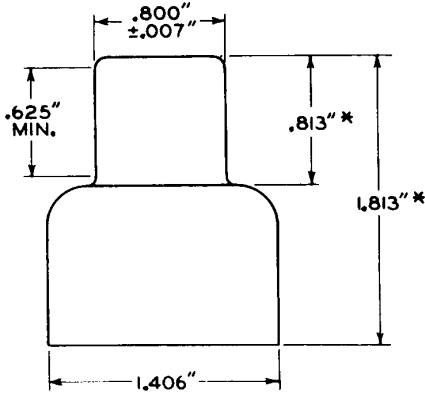
JETEC No. C1-15
RCA No. 3917

LARGE



JETEC No. C1-8
RCA No. 3910

SKIRTED LARGE



JETEC No. C1-9
RCA No. 3905

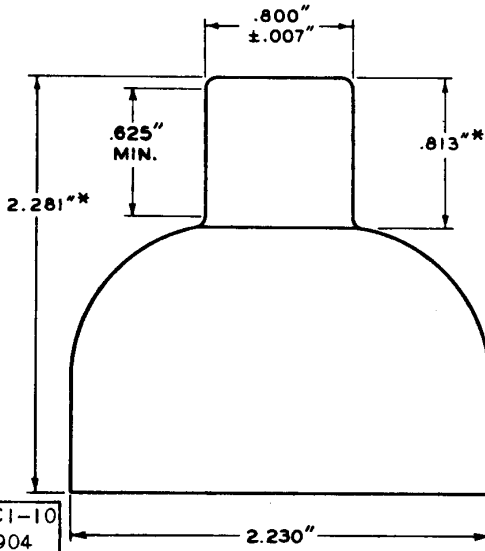
* Add 0.060* for solder on finished tube.



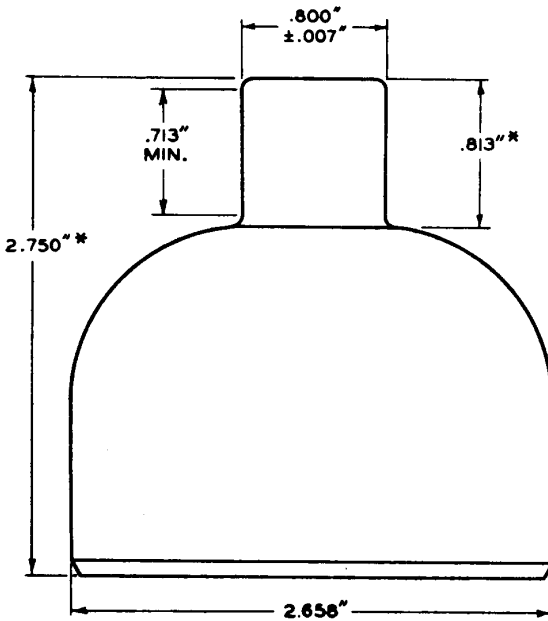
BASES

1-TERMINAL TYPES (CAPS)

SKIRTED LARGE



SKIRTED LARGE



* Add 0.060* for solder on finished tube.

MAY 3, 1954

TUBE DIVISION
RADIO CORPORATION OF AMERICA, HARRISON, NEW JERSEY

CAPS 3

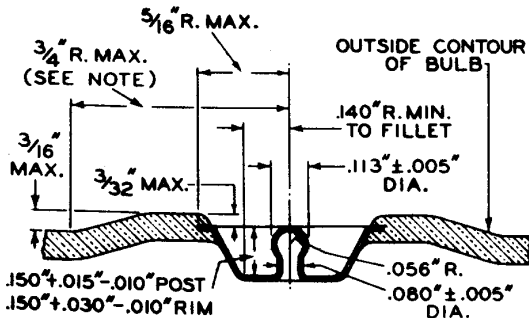


BASES

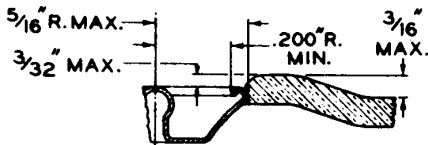
1-TERMINAL TYPES (CAPS)

DETAILS OF RECESSED SMALL BALL CAP & BULB ASSEMBLY

JETEC No. J1-22



ALTERNATE EDGE DESIGN



VARIANT SEAL SHAPES



NOTE: PROTRUSION OF GLASS AROUND CAP ABOVE BULB CONTOUR IS LIMITED TO AREA BOUNDED BY CIRCLE CONCENTRIC WITH CAP AXIS AND HAVING RADIUS OF $3/4$ " MAX.

FOR ATTACHING OR DETACHING, THE CONNECTOR SHOULD REQUIRE NOT MORE THAN 8 POUNDS TOTAL FORCE PERPENDICULAR TO THE PLANE OF THE RIM OF THE CAP.

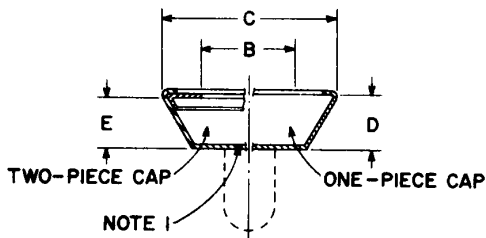
ANGLE BETWEEN PLANE OF THE RIM OF CAP AND PLANE TANGENT TO ORIGINAL CONTOUR OF BULB AT CENTER OF CAP WILL NOT BE MORE THAN 10° .

92CM-6535R4

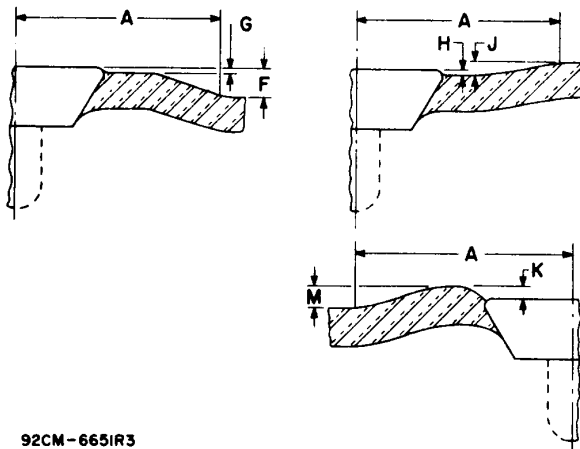
Bases

Caps (1-Terminal Types)

Details of Recessed Small Cavity Cap & Bulb Assembly JEDEC No. J1-21



VARIANT SEAL SHAPES



92CM-6651R3

| DIMEN- SION | INCHES | | | MILLIMETERS | | | NOTES |
|----------------|--------|-------|-------|-------------|-------|-------|-------|
| | Min | Nom | Max | Min | Nom | Max | |
| A | - | - | 0.750 | - | - | 19.05 | 2 |
| B | 0.307 | 0.312 | 0.317 | 7.798 | 7.925 | 8.051 | |
| C | - | - | 0.570 | - | - | 14.47 | 3 |
| D | 0.153 | - | 0.173 | 3.89 | - | 4.39 | |
| E | 0.136 | - | 0.166 | 3.46 | - | 4.21 | |
| F | - | - | 0.188 | - | - | 4.78 | |
| G | - | - | 0.031 | - | - | 0.78 | |
| H | - | - | 0.031 | - | - | 0.78 | |
| J | - | - | 0.047 | - | - | 1.19 | |
| K | - | - | 0.094 | - | - | 2.38 | |
| M | - | - | 0.188 | - | - | 4.78 | |

See Notes on reverse side.



Bases

Caps (1-Terminal Types)

Note 1: Connector shall not extend beyond this line. Bottom contour optional.

Note 2: Protrusion or depression of glass around cap above bulb contour is limited to areas bounded by circle concentric with cap axis and having radii as shown above.

Note 3: When measured in a plane perpendicular to axis of contact cone.

Note 4: When attaching or detaching the connector the total force required should not exceed eight pounds as applied perpendicular to the plane of the rim of the cap.

Note 5: The angle between plane of the rim of the cap and plane tangent to original contour of bulb at center of cap shall not exceed 10° .

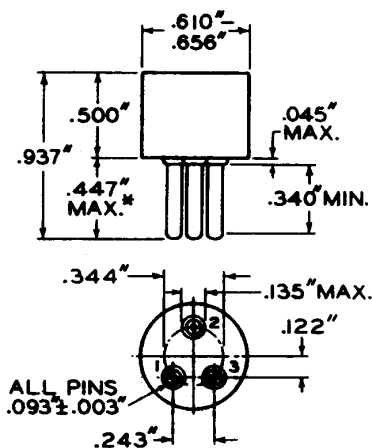




BASES

3-PIN TYPES

SMALL-SHELL PEEWEE 3-PIN



JETEC No. A3-1
RCA No. 3313

Base-pin positions are held to tolerances such that entire length of pins will enter flat-plate gauge (JETEC No. GA3-1) having thickness of 1/4" and three holes with diameters of 0.1030" - 0.1035" so located on a 0.3440" \pm 0.0005" diameter circle that the distance along the chord between two adjacent hole centers is 0.2340" \pm 0.0005" and the distance along the chord between the remaining pin and the two adjacent pins is 0.3175" \pm 0.0005".

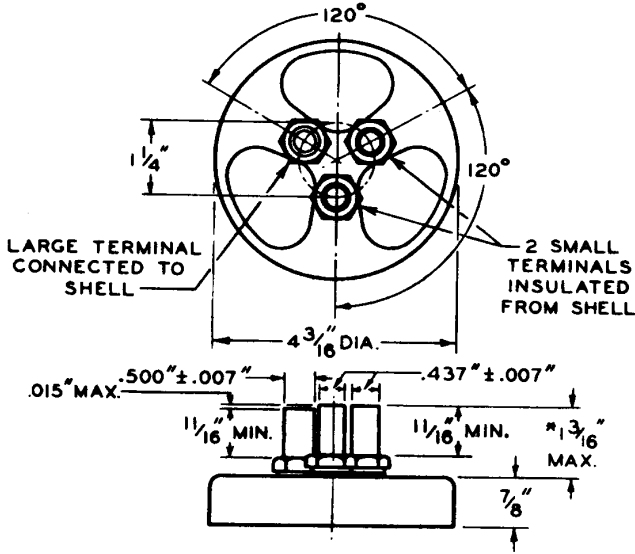
Pin fit in gauge is such that gauge together with supplementary weight totaling 2 pounds will not be lifted when pins are withdrawn.

* Add 0.020" for solder on finished tube.



BASES

3-TERMINAL TYPES



JETEC No. A3-80
RCA No. 3232

* Add $\frac{1}{8}$ " for solder on finished tube.

NOV. 5, 1954

TUBE DIVISION
RADIO CORPORATION OF AMERICA, HARRISON, NEW JERSEY

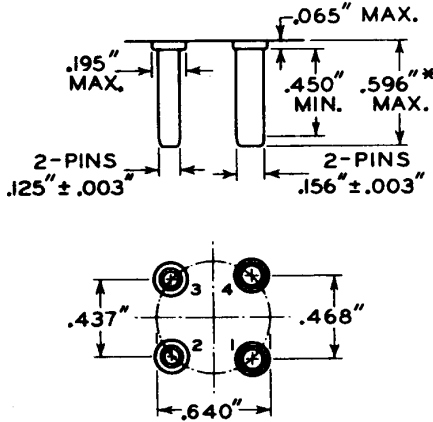
BASES 1



BASES

4-PIN TYPES

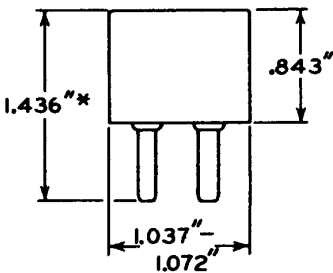
"SMALL 4-PIN" PIN DIMENSIONS AND ORIENTATION



Base-pin positions are held to tolerances such that entire length of pins will enter flat-plate gauge (JETEC No. GA4-1) having thickness of 1/4" and four holes, two with diameters of $0.1650'' \pm 0.0005''$ and two with diameters of $0.1340'' \pm 0.0005''$ so located on a $0.6400'' \pm 0.0005''$ diameter circle that the distance between the adjacent $0.1650''$ diameter pins is $0.4680'' \pm 0.0005''$ and the distance between the adjacent $0.1340''$ diameter pins is $0.4370'' \pm 0.0005''$.

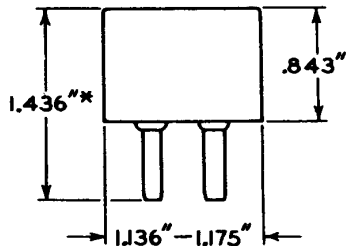
Pin fit in gauge is such that gauge together with supplementary weight totaling 4 pounds will not be lifted when pins are withdrawn.

DWARF-SHELL SMALL 4-PIN



JETEC No. A4-26
RCA No. 4107

SMALL-SHELL SMALL 4-PIN



JETEC No. A4-5
RCA No. 4108

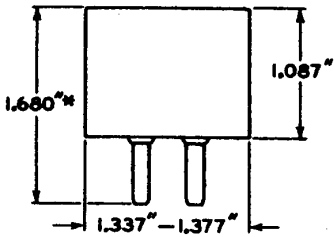
* Add 0.030" for solder on finished tube.



BASES

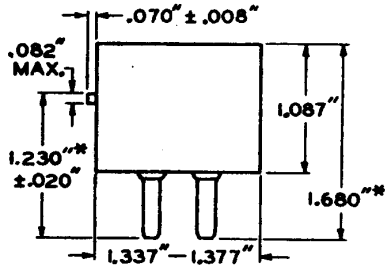
4-PIN TYPES

MEDIUM-SHELL SMALL 4-PIN



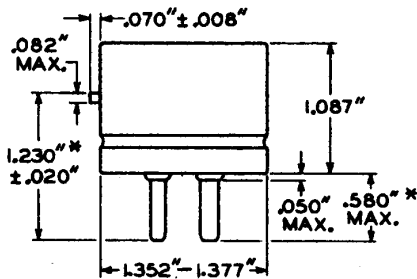
JETEC No. A4-9
RCA No. 4106

MEDIUM-SHELL SMALL 4-PIN WITH BAYONET



JETEC No. A4-10
RCA No. 4102

MEDIUM-METAL-SHELL SMALL 4-PIN WITH BAYONET



JETEC No. A4-89
RCA No. 4102-M1

*For other dimensions, see first page
of the "Small 4-Pin" series.*

* Add 0.030" for solder on finished tube.

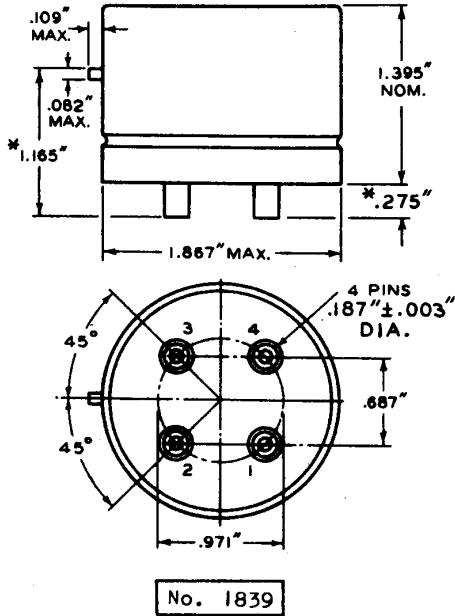


BASES

4-PIN TYPES

With Bottom View

JUMBO 4-PIN



* On finished tube, add $.060''$ for solder.

Dec. 1, 1942

RCA RADIOTRON DIVISION
RCA MANUFACTURING COMPANY, INC.

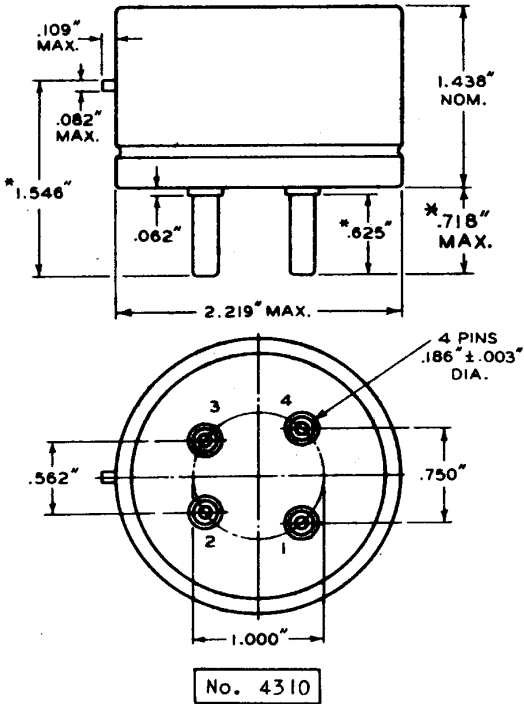
BASES



BASES

4-PIN TYPES
With Bottom View

SUPER-JUMBO 4-PIN



* On finished tube, add $.030''$ for solder:

Dec. 1, 1942

RCA RADIOTRON DIVISION
RCA MANUFACTURING COMPANY, INC.

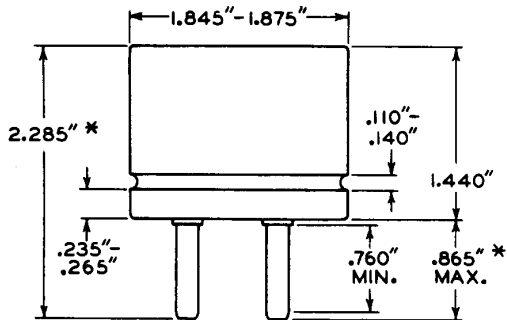
BASES



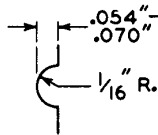
BASES

4-PIN TYPES

MEDIUM-METAL-SHELL SUPER-JUMBO 4-PIN



Detail of Groove



JETEC No. A4-81

*For other dimensions, see first page
of the "Super-Jumbo" series.*

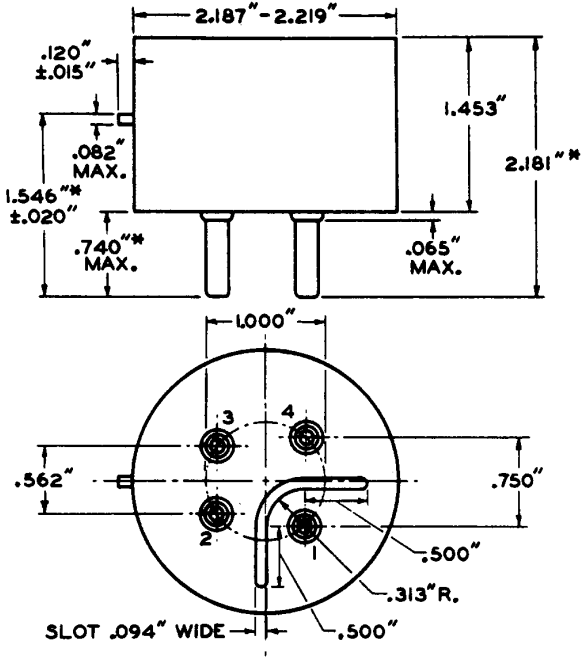
* Add 0.060" for solder on finished tube.



BASES

4-PIN TYPES

LARGE - SHELL SUPER-JUMBO 4 - PIN WITH BAYONET



JETEC No. A4-88

RCA No. 3982

*For other dimensions, see first page
of the "Super-Jumbo" series.*

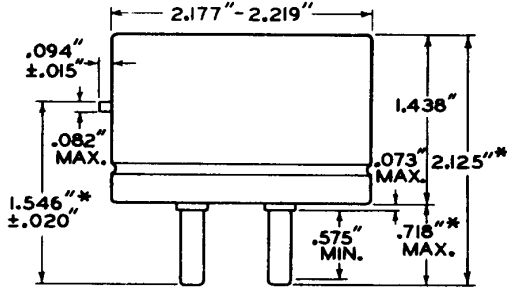
* Add 0.060" for solder on finished tube.



BASES

4-PIN TYPES

LARGE - METAL - SHELL SUPER - JUMBO 4 - PIN WITH BAYONET



JETEC No. A4-18
RCA No. 4310

*For other dimensions, see first page
of the "Super-Jumbo" series.*

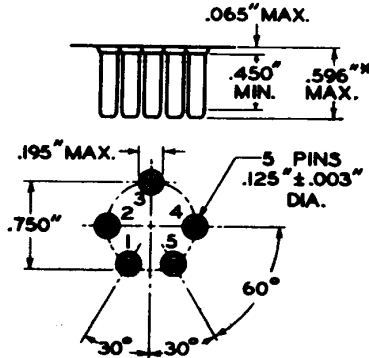
* Add 0.060" for solder on finished tube.



BASES

5-PIN TYPES

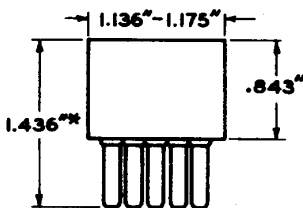
"SMALL 5-PIN" PIN DIMENSIONS AND ORIENTATION



Base-pin positions are held to tolerances such that entire length of pins will enter flat-plate gauge (JETEC No. GA5-1) having thickness of $1/4''$ and five holes with diameters of $0.1360'' \pm 0.0005''$ so located on a $0.7500'' \pm 0.0005''$ diameter circle that the distance between centers of the four adjacent holes is $0.3750'' \pm 0.0005''$ and the distance between the center of the remaining hole and its adjacent hole centers is $0.5300'' \pm 0.0005''$.

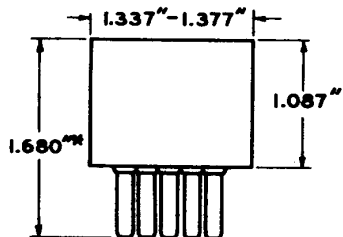
Pin fit in gauge is such that gauge together with supplementary weight totaling 4 pounds will not be lifted when pins are withdrawn.

SMALL-SHELL SMALL 5-PIN



JETEC No. A5-6
RCA No. 5108

MEDIUM-SHELL SMALL 5-PIN



JETEC No. A5-11
RCA No. 5106

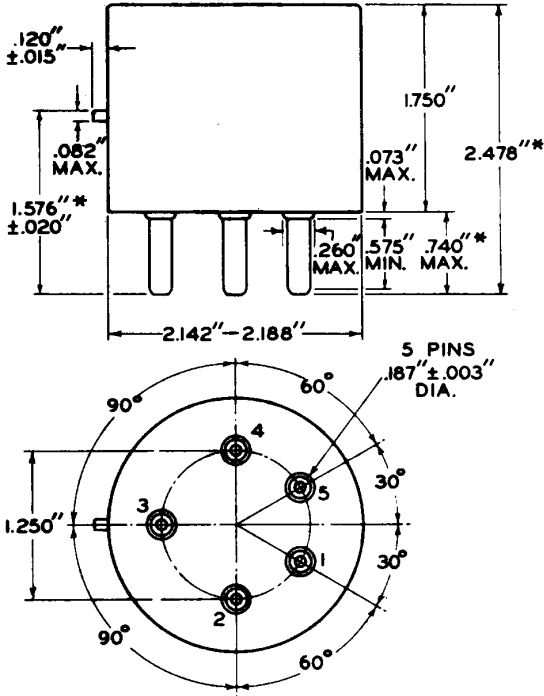
* Add $0.030''$ for solder on finished tube.



BASES

5-PIN TYPES

MEDIUM-SHELL GIANT 5-PIN WITH BAYONET



JETEC No. A5-19

RCA No. 5325

SPECIAL METAL-SHELL GIANT 5-PIN

See Tube Types 4-125A/4D21 and 4-250A/5D22

SPECIAL METAL-SHELL SUPER-GIANT 5-PIN

See Tube Type 4-1000A

* Add 0.030" for solder on finished tube.



BASES

5-PIN TYPES

SMALL-SHELL DUODECAL 5-PIN

*For details of this base, see corresponding
DUODECAL 12-PIN type*

DWARF-SHELL OCTAL 5-PIN

SMALL-SHELL OCTAL 5-PIN

SMALL-WAFER OCTAL 5-PIN

SMALL-WAFER OCTAL 5-PIN

WITH SLEEVE

INTERMEDIATE-SHELL OCTAL 5-PIN

SHORT INTERMEDIATE-SHELL OCTAL 5-PIN

SHORT INTERMEDIATE-SHELL OCTAL 5-PIN

WITH EXTERNAL BARRIERS

MEDIUM-SHELL OCTAL 5-PIN

SHORT JUMBO-SHELL OCTAL 5-PIN

*For details of above bases, see corresponding
OCTAL 8-PIN type*

SMALL RADIAL 5-PIN

See OUTLINES--Glass Types

MEDIUM-MOLDED-FLARE

SEPTAR 5-PIN

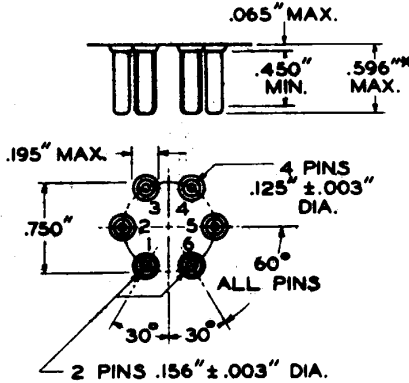
See Tube Type 4-65A



BASES

6-PIN TYPES

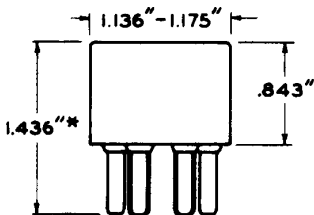
"SMALL 6-PIN" PIN DIMENSIONS AND ORIENTATION



Base-pin positions are held to tolerances such that entire length of pins will enter flat-plate gauge (JETEC No. GA6-1) having thickness of 1/4" and six holes, two adjacent with diameters of $0.1650'' \pm 0.0005''$ and four with diameters of $0.1360'' \pm 0.0005''$ so located on a $0.7500'' \pm 0.0005''$ diameter circle that the distance between any two adjacent hole centers is $0.3750'' \pm 0.0005''$.

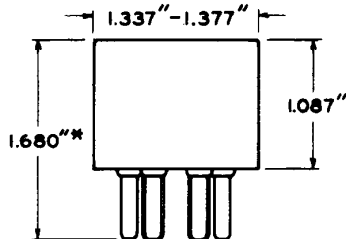
Pin fit in gauge is such that gauge together with supplementary weight totaling 4 pounds will not be lifted when pins are withdrawn.

SMALL-SHELL SMALL 6-PIN



JETEC No. A6-7
RCA No. 6108

MEDIUM-SHELL SMALL 6-PIN



JETEC No. A6-12
RCA No. 6106

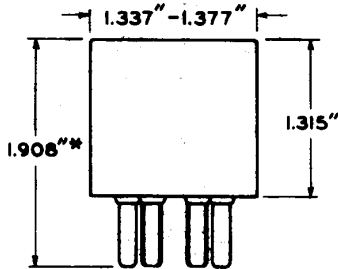
* Add 0.030" for solder on finished tube.



BASES

6-PIN TYPES

LONG MEDIUM-SHELL SMALL 6-PIN



RCA No. 6105

*For other dimensions, see first page
of the "Small 6-Pin" series.*

SMALL-SHELL DUODECAL 6-PIN

*For details of this base, see corresponding
DUODECAL 12-PIN type*

SMALL-SHELL OCTAL 6-PIN
INTERMEDIATE-SHELL OCTAL 6-PIN
SHORT INTERMEDIATE-SHELL OCTAL 6-PIN
SHORT INTERMEDIATE-SHELL OCTAL 6-PIN
WITH EXTERNAL BARRIERS
MEDIUM-SHELL OCTAL 6-PIN
SHORT JUMBO-SHELL OCTAL 6-PIN
SMALL-WAFER OCTAL 6-PIN
SMALL-WAFER OCTAL 6-PIN
WITH SLEEVE

*For details of above bases, see corresponding
OCTAL-8 PIN type*

* Add 0.030" for solder on finished tube.

MAR. 1, 1955

TUBE DIVISION

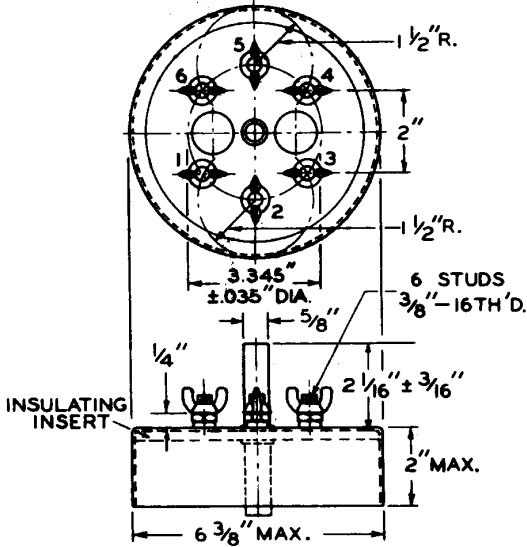
RADIO CORPORATION OF AMERICA, HARRISON, NEW JERSEY

BASES 7



BASES

6-TERMINAL TYPES



SPACE FOR CONNECTOR
BETWEEN WING NUT AND
LOCK NUT IS 3/16" MAX.

JETEC No. FO-6

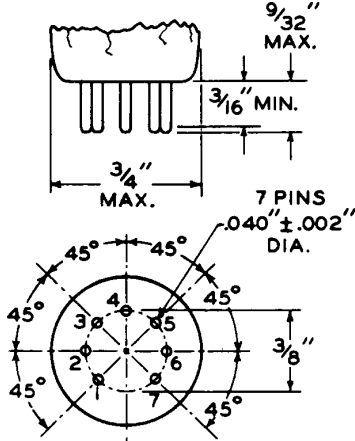
RCA No. 6628



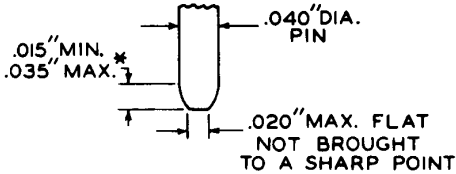
BASES

7-PIN TYPES

SMALL-BUTTON MINIATURE 7-PIN



Miniature Base Pin Contour



JETEC No. E7-1

Base-pin positions are held to tolerances such that entire length of pins will without undue force pass into and disengage from flat-plate gauge (part of gauge JETEC No. GE7-1) having thickness of 1/4" and eight holes with diameters of $0.0520" \pm 0.0005"$ so located on a $0.3750" \pm 0.0005"$ diameter circle that the distance along the chord between any two adjacent hole centers is $0.1434" \pm 0.0005"$.

The design of the socket should be such that circuit wiring can not impress lateral strains through the socket contacts on the base pins. The point of bearing of the contacts on the base pins should not be closer than 1/8" from the bottom of the seated tube.

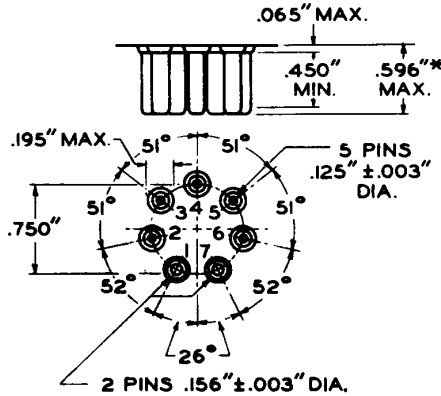
* This dimension around the periphery of any individual pin may vary within the limits shown.



BASES

7-PIN TYPES

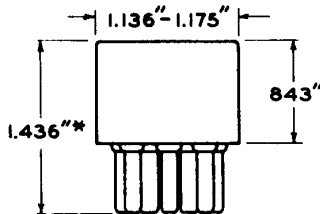
"SMALL 7-PIN" PIN DIMENSIONS AND ORIENTATION



Base-pin positions are held to tolerances such that entire length of pins will enter flat-plate gauge (JETEC No. GA7-1) having thickness of $1/4''$ and seven holes, two adjacent with diameters of $0.1650'' \pm 0.0005''$ and five with diameters of $0.1360'' \pm 0.0005''$ so located on a $0.7500'' \pm 0.0005''$ diameter circle that the distance between centers of the adjacent $0.1650''$ diameter holes is $0.3288'' \pm 0.0005''$ and the distance between centers of the adjacent $0.1360''$ diameter holes is $0.3229'' \pm 0.0005''$.

Pin fit in gauge is such that gauge together with supplementary weight totaling 4 pounds will not be lifted when pins are withdrawn.

SMALL-SHELL SMALL 7-PIN



JETEC No. A7-8

RCA No. 7108

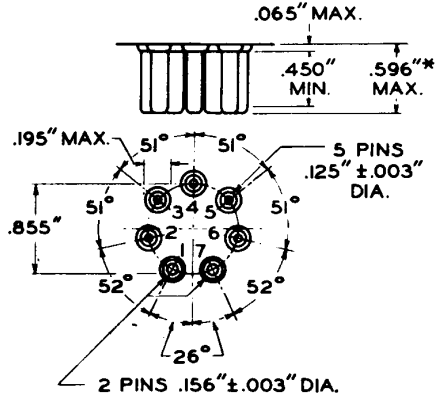
* Add $0.030''$ for solder on finished tube.



BASES

7-PIN TYPES

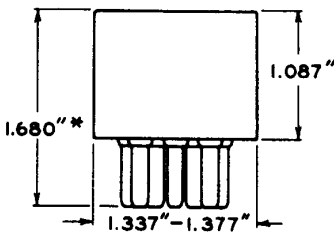
"MEDIUM 7-PIN" PIN DIMENSIONS AND ORIENTATION



Base-pin positions are held to tolerances such that entire length of pins will enter flat-plate gauge (JETEC No. GA7-2) having thickness of 1/4" and seven holes, two adjacent with diameters of $0.1650" \pm 0.0005"$ and five with diameters of $0.1360" \pm 0.0005"$ so located on a $0.8550" \pm 0.0005"$ diameter circle that the distance between centers of the adjacent $0.1650"$ diameter holes is $0.3748" \pm 0.0005"$ and the distance between centers of the adjacent $0.1360"$ diameter holes is $0.3681" \pm 0.0005"$.

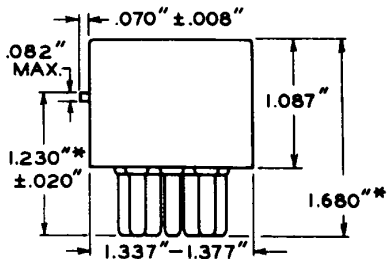
Pin fit in gauge is such that gauge together with supplementary weight totaling 4 pounds will not be lifted when pins are withdrawn.

MEDIUM-SHELL MEDIUM 7-PIN



JETEC No. A7-13
RCA No. 7306

MEDIUM-SHELL MEDIUM 7-PIN WITH BAYONET



JETEC No. A7-14
RCA No. 7302

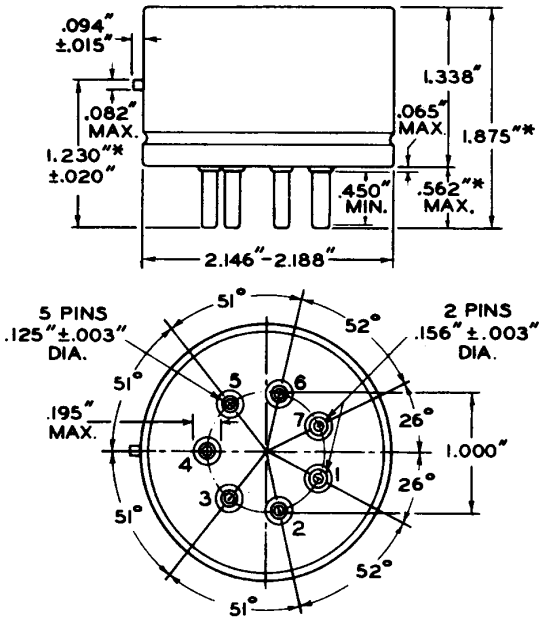
* Add 0.030" for solder on finished tube.



BASES

7-PIN TYPES

MEDIUM-METAL-SHELL GIANT 7-PIN WITH BAYONET



JETEC No. A7-17
RCA No. 7609

VENTILATED MEDIUM-METAL-SHELL GIANT 7-PIN

See Tube Type 4E27A15-125B

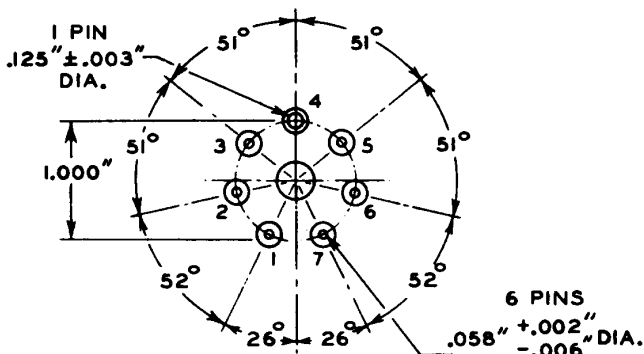
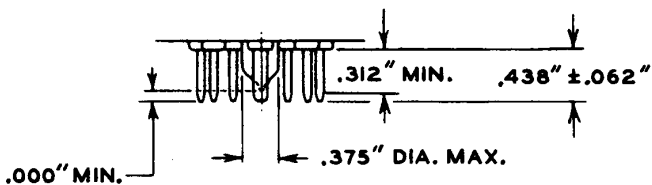
* Add 0.060" for solder on finished tube.



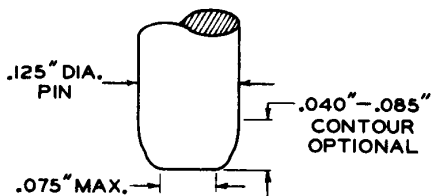
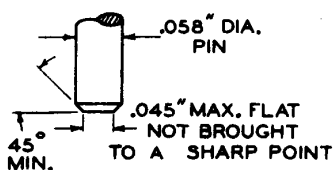
BASES

7-PIN TYPES

"SEPTAR" PIN DIMENSIONS AND ORIENTATION



Septar Base Pin Contour



Base-pin positions are held to tolerances such that entire length of pins will without undue force pass into and disengage from flat-plate gauge having thickness of 3/8" and seven holes, one with diameter of 0.1450" ± 0.0005" and six with diameters of 0.0800" ± 0.0005" located on a 1.0000" ± 0.0005" diameter circle at specified angles with a tolerance of ±5' for each angle. Gauge is also provided with a hole 0.500" ± 0.010" concentric with pin circle.

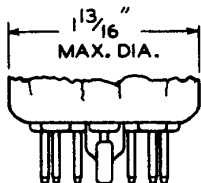
It is essential that the socket shall be constructed with floating-contact clips.



BASES

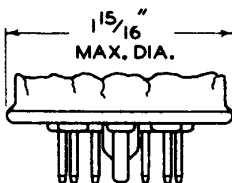
7-PIN TYPES

MEDIUM-BUTTON SEPTAR 7-PIN



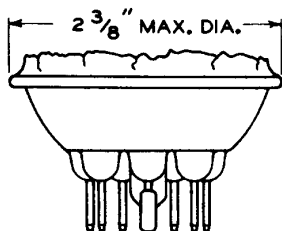
JETEC No. E7-20
RCA No. FSB6014

SMALL-WAFER SEPTAR 7-PIN



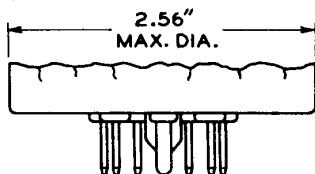
JETEC No. E7-21
RCA No. FSB712

MEDIUM MOLDED-FLARE SEPTAR 7-PIN



JETEC No. E7-2
RCA No. FSB603

JUMBO-BUTTON SEPTAR 7-PIN



JETEC No. E7-46
RCA No. FSB6038

For other dimensions of above bases, see first page of the "Septar" series



BASES

7-PIN TYPES

SMALL-SHELL DUODECAL 7-PIN

*For details of this base, see corresponding
SMALL-SHELL DUODECAL 12-PIN type*

SMALL-BUTTON EIGHTAR 7-PIN

*For details of this base, see corresponding
SMALL-BUTTON EIGHTAR 8-PIN type*

SMALL-SHELL OCTAL 7-PIN

SHORT INTERMEDIATE-SHELL OCTAL 7-PIN

SHORT INTERMEDIATE-SHELL OCTAL 7-PIN
WITH EXTERNAL BARRIERS

INTERMEDIATE-SHELL OCTAL 7-PIN

SHORT MEDIUM-SHELL OCTAL 7-PIN
WITH EXTERNAL BARRIERS, STYLES A AND B

MEDIUM-SHELL OCTAL 7-PIN

SHORT JUMBO-SHELL OCTAL 7-PIN
WITH EXTERNAL BARRIERS

SMALL-WAFER OCTAL 7-PIN

SMALL-WAFER OCTAL 7-PIN
WITH SLEEVE

*For details of above bases, see corresponding
OCTAL 8-PIN type*

SMALL RADIAL 7-PIN

See OUTLINES--Glass Tubes