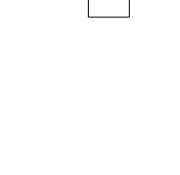
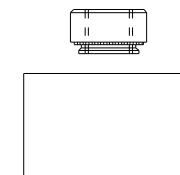
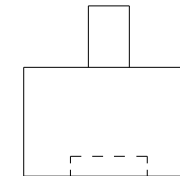
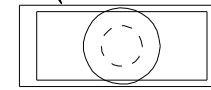
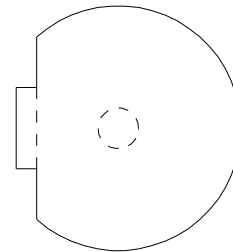
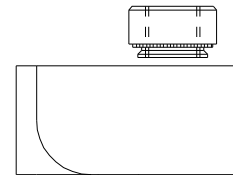
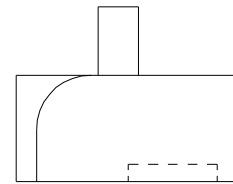
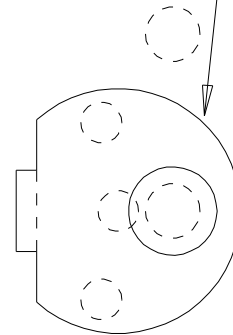
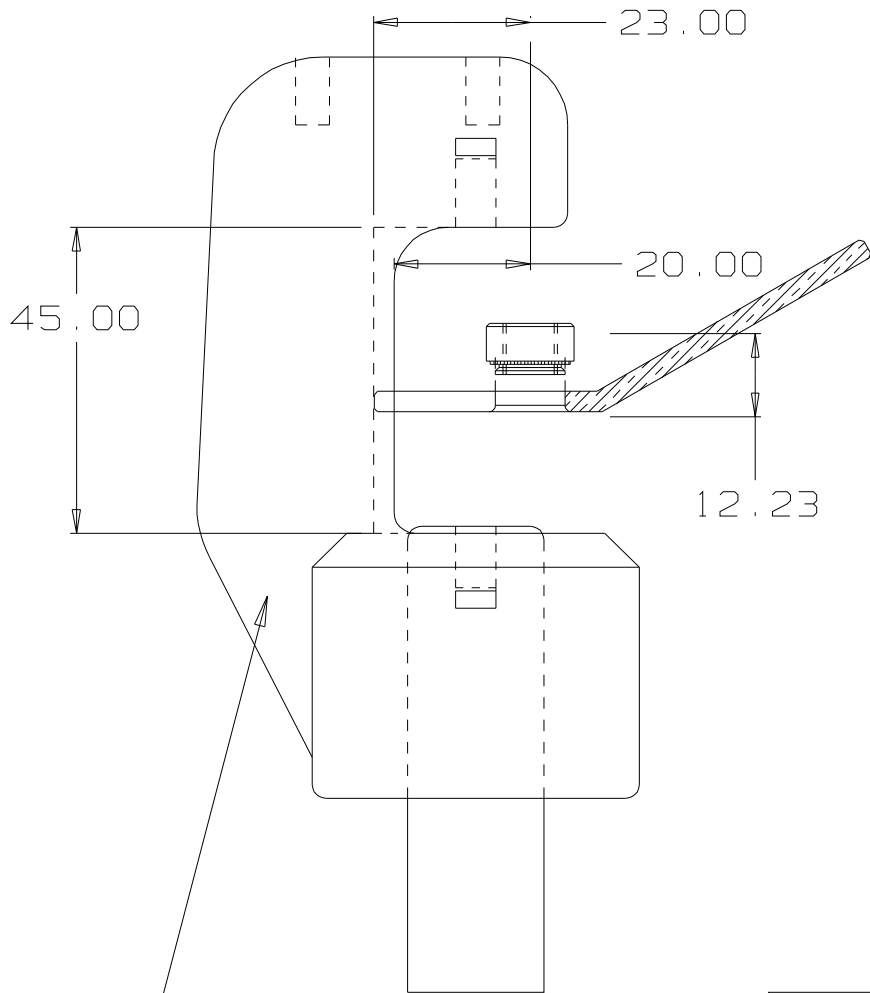


Optional base plate

M8 PEM Die Set

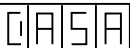
M6 PEM-Nut Die Set



Hydraulic "G" Frame

MATERIAL Extrusion No. xxxx
ALLOY 6063-T5
EST. AREA 265 mm
EST. WEIGHT 2.80 kg/n
EST. PERIPHERY EXT : 354 mm TOT : 354 mm
TOLERANCE 0.00mm ±0.1mm 00.0mm ±0.25mm 0000mm ±0.5mm 0-600mm ±0.1mm > 600mm ±0.5mm
BS1474:1987 APPLIES UNLESS OTHERWISE SPECIFIED

JOB No.  
**3000**

 Modular Systems Petone 5012, WELLINGTON, NEW ZEALAND TELEPHONE : (64-4) 9393 777 WWW Address : www.casa.co.nz	CUSTOMER : <b>Anatel Electronics ChCh</b>		SIZE <b>A4</b>	DRAWING Reference No. <b>M8-Anatel</b>	ISSUE <b>A</b>
	DESCRIPTION : <b>M8 PEM Nut Setting Hydraulic Press</b>				
DRAWN : <b>A.W.D</b>	DATE : <b>29/08/22</b>	APPROVED : <b>?</b>	DWG. SCALE : <b>1:1</b>	© COPYRIGHT : CASA Modular Systems ALL RIGHTS RESERVED	