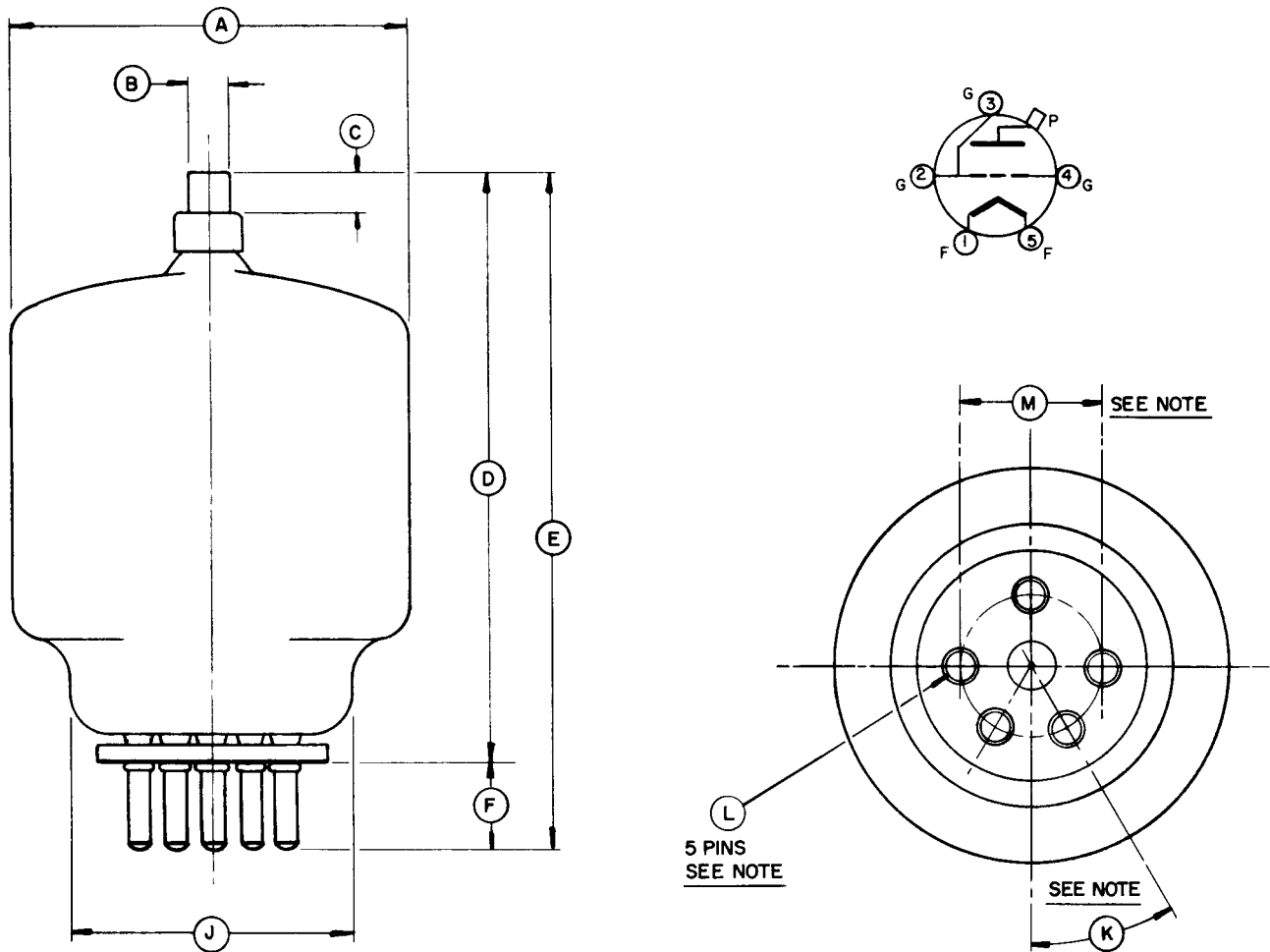




PL3-500ZG Power Triode



Dimension Data

Dim.	Inches			Millimeters		
	Min.	Typ.	Max.	Min.	Typ.	Max.
A	---	---	3.438	---	---	87.33
B	0.350	---	0.365	8.89	---	9.27
C	0.328	---	0.359	8.33	---	9.12
D	---	---	5.200	---	---	132.10
E	5.500	---	6.100	139.70	---	154.94
F	0.700	---	---	17.78	---	---
J	---	---	2.500	---	---	63.50
K	---	30°	---	---	---	---
L	0.1875	---	0.191	4.70	---	4.85
M	---	1.250	---	---	31.75	---

Note: pins "L" are so aligned that they can be freely inserted into a gage 1/4" thick with hole dias. of 0.204 located on true centers by the given dims "K" and "M".