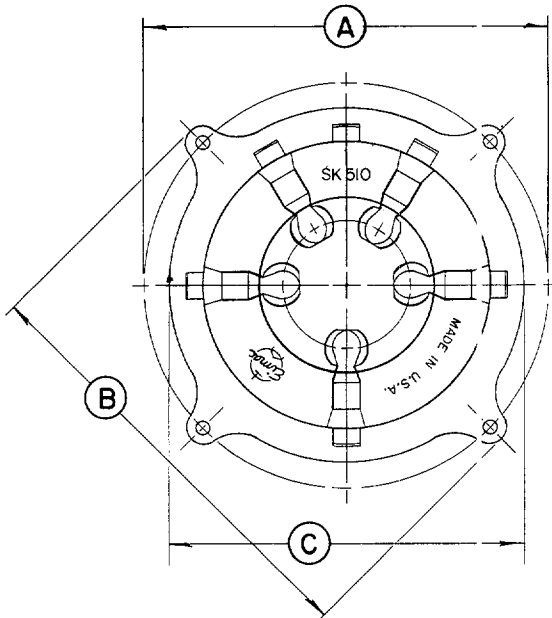
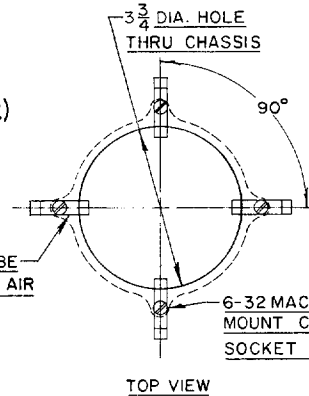
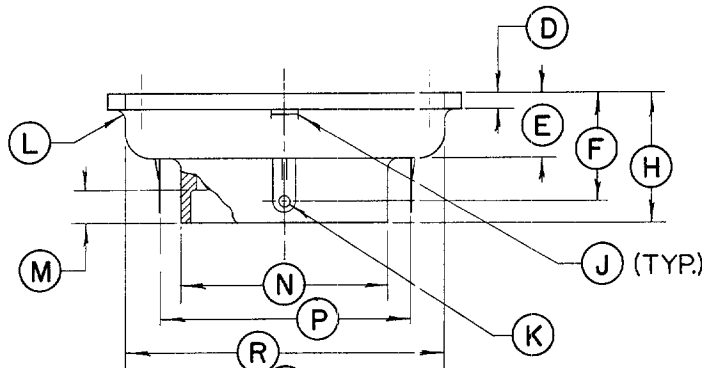


DIMENSIONAL DATA						
DIM	INCHES			MILLIMETERS		
	MIN.	MAX.	REF.	MIN.	MAX.	REF.
A	4.593*	4.656*	- -	116.7	118.3	- -
B	4.968	5.031	- -	126.2	127.8	- -
C	4.031*	4.093*	- -	102.4	104.0	- -
D	0.156	0.218	- -	3.96	5.54	- -
E	0.718	0.781	- -	18.24	19.83	- -
F	- -	- -	1.250	- -	- -	31.75
H	1.468	1.531	- -	37.29	38.89	- -
J**	- -	- -	- -	- -	- -	- -
K	0.093*	0.156*	- -	2.36*	3.96*	- -
L	0.093R	0.156R	- -	2.36R	3.96R	- -
M	0.343	0.406	- -	8.71	10.31	- -
N	2.343*	2.406*	- -	59.51*	61.11*	- -
P	- -	- -	2890	- -	- -	73.41
R	3.593*	3.656*	- -	91.26*	92.86*	- -
S	2.140*	2.203*	- -	54.36*	55.96*	- -
T	- -	- -	0.187R	- -	- -	4.75R
U	- -	- -	0.500R	- -	- -	12.70R
V	0.139*	0.152*	- -	3.53*	3.86*	- -



* DIAMETER

** 0.031 x 0.281, 0.093 x 0.343 (IN.)
0.79 x 7.14, 2.36 x 8.71 (MIL.)



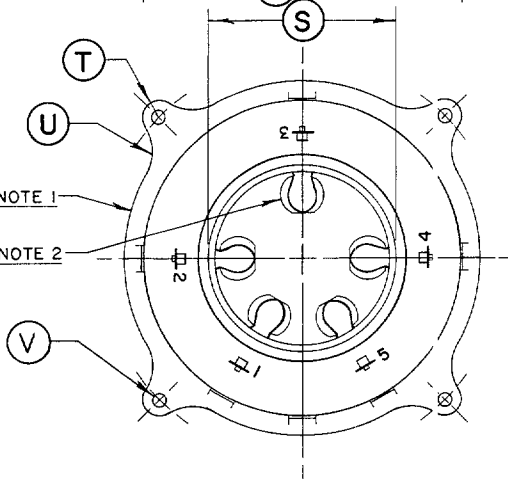
CLIPS GROUND TUBE
BASE & OR HOLD AIR
FLOW CHIMNEY
SEE NOTE 3

6-32 MACHINE SCREWS
MOUNT CLIPS &
SOCKET ON CHASSIS

TOP VIEW

SEE NOTE 1

SEE NOTE 2



NOTES:

1. SOCKET SHELL - MAT'L: DIALLYL PHTHALATE.
2. TUBE PIN CONTACT CLIPS - MAT'L: BERYLLIUM COPPER, HEAT TREATED. FINISH: SILVER PLATED.
3. CHIMNEY CLIPS - MAT'L: BERYLLIUM COPPER, HEAT TREATED. FINISH: CADMIUM PLATED. PART NO.: 11584-4N PER EIMAC DWG 115842.