

Multipole Cable Assembly Kitset – Custom Breakaway



<http://www.casa.co.nz>

16/04/2011

Type: 11MS4P-21MS4S+11MS4P-PE

MS3101 Class E



MS3106 Class E



MS3100 Class E



MS3102 Class A/E/R



General Connector Data & Options

Style: Mil-C-5015 series

Brand: Various

Contacts: 4 or more (as available)

Shell-Size: 18~24 (or 16~16S as available)

OEM #: TBA

Voltage: 24 Vdc. (working)

Current: 15A (nominal)

Wires: 4 (4 core flexible) 12mm OD

Arrangement (options):

16S-8 (5 x 16g)

16S-1 (7 x 16g)

18-4 (4 x 16g)

18-10 (4 x 12g)

18-15 (4 x 12g)

20-4 (4 x 12g)

22-10 (4 x 16g)

22-22 (4 x 8g)

22-28 (7 x 12g)

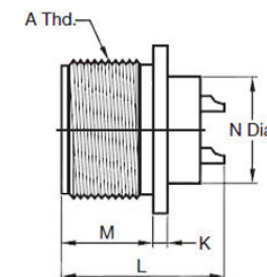
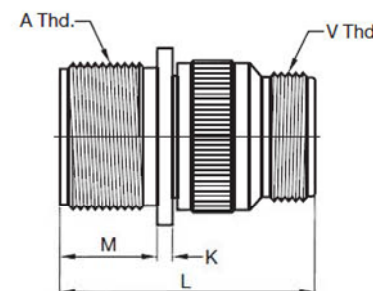
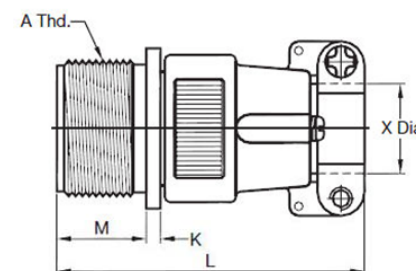
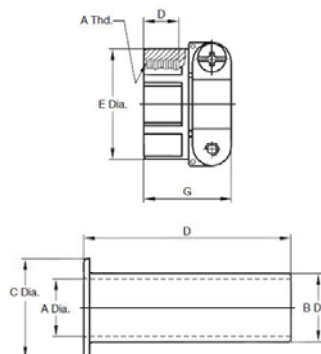
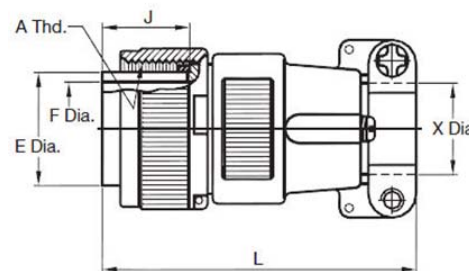
24-2 (7 x 12g)

24-22 (4 x 8g)

24-27 (7 x 16g)

Condition: New (or refurbished / tested with customer approval)

Comments: TBA



MS3100 Class A



Client to choose best options from available stocks at time of order to ensure timely delivery.

NOTICE – the information on this page is not guaranteed for accuracy – CASA accepts no responsibility (neither expressed nor implied) for any errors or the consequence therefrom.