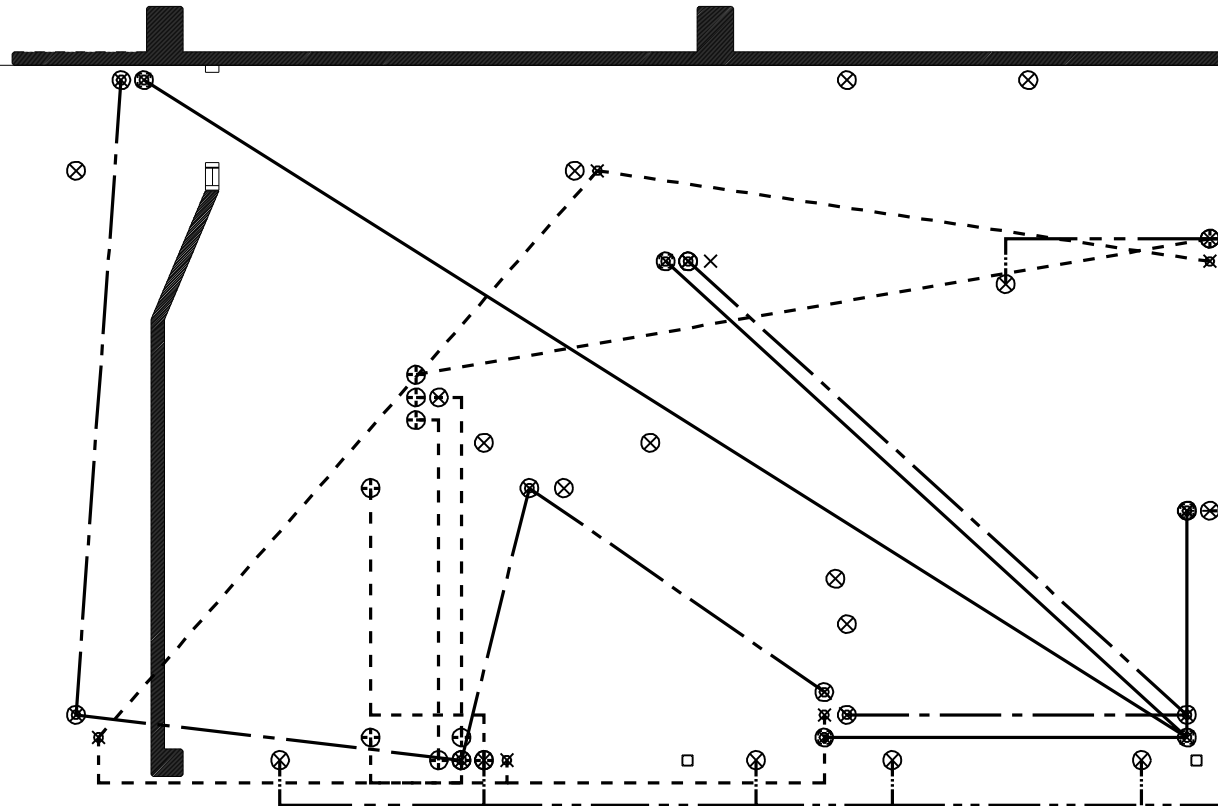


- ⊕ Audio Sound & PA (Level 19)
- ⊗ Network Ethernet Coax (Level 17)
- ⊗ Cat 5 - 100 base T (Level 21)
- ⊗ Electric Hot Point (Level 23)
- ⊗ Television 75 Ohm Coax (Level 22)



Special Options/Features:

1) Install EMI Mains Filters into the incoming power circuit at the switchboard primary circuit or wherever it can be conveniently and legally installed.

2) Run some CAT5 cables for connecting the Server to the primary nodes of the network (Sales + Reception + GM ?)

3) Consider separate MAINS feed for the Server/UPS and sales and reception nodes.

4) Provide Mains and LAN feed preparatory to the power and network services to the mezanine floors outside/above the upstairs toilet.

5) Provide power etc. for master CLOCK assuming that it MAY one day be installed.