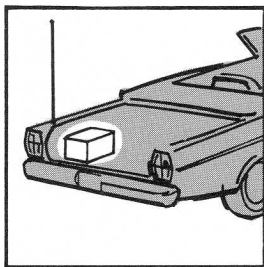
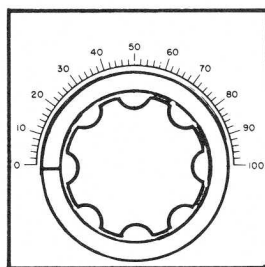




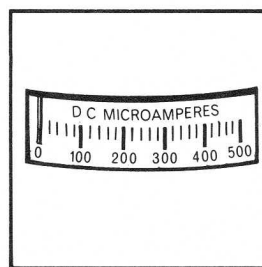
TRANSMATCH JUNIOR



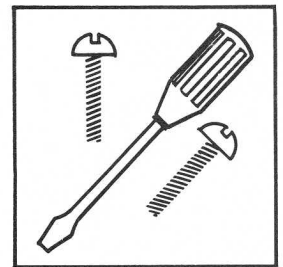
Small, lightweight
for mobile use.



Graduated dials
for fast resetting.



Built-in sensitive meter.



Easy installation (2 bolts)

The **No. 92201 TRANSMATCH JUNIOR** is a 300 watt band-switching r.f. transformer with a reflectometer as the indicator. The **TRANSMATCH JUNIOR**, inserted between a transmitter and a transmission line, will convert the impedance of any 10 to 500 ohm coaxial fed antenna system to 50 ohms so that the transmitter may, at all frequencies, work into the impedance for which it was designed.

Most transmitters are designed to work into a 50 ohm load and lose efficiency working into other than a 50 ohm load. The impedance of any antenna varies as the frequency varies within a band and this causes a mismatch between the antenna and the 50 ohm transmission line. With this mismatch the transmitter works into other than the intended 50 ohm load and therefore loses efficiency. The **TRANSMATCH JUNIOR** converts this and any other mismatch in the antenna system into a 50 ohm load so that the transmitter will be properly loaded and work at peak efficiency at all frequencies.

TECHNICAL SPECIFICATIONS

Input impedance (transmitter) 50 to 70 ohms single-ended.
Output impedance (transmission line) 10 to 500 ohms coaxial: 5 to 1000 ohms at most frequencies.
Frequency range — 3.5, 7, 14, 21, 28 MC. amateur bands band-switched.
Power handling capability — 300 watts peak.
Indicator — 50 ohm reflectometer using a 500 microampere meter.
Cabinet size: 7" W. x 4 $\frac{3}{4}$ " H. x 9" D. (including knobs)
Weight: 6 lbs.

The **TRANSMATCH JUNIOR** is a lower power, lower cost, version of the **No. 92200 2 KW TRANSMATCH**. It is small and lightweight and therefore ideal for mobile use as well as for stationary use.