

# User Guide

## WPG-150

Wireless G Presentation Gateway



Copyright © ViewSonic Corporation, 2007. All rights reserved.

ViewSonic and the three birds logo are registered trademarks of ViewSonic Corporation.

PowerPoint, Office Excel, Office Word, and Microsoft are registered trademarks of Microsoft Corporation.

Corporate names and trademarks are the property of their respective companies.

Disclaimer: ViewSonic Corporation shall not be liable for technical or editorial errors or omissions contained herein; nor for incidental or consequential damages resulting from furnishing this material, or the performance or use of this product.

In the interest of continuing product improvement, ViewSonic Corporation reserves the right to change product specifications without notice. Information in this document may change without notice.

No part of this document may be copied, reproduced, or transmitted by any means, for any purpose without prior written permission from ViewSonic Corporation.

## Product Registration

To meet your future needs, and to receive any additional product information as it becomes available, please register your product on the internet at:

**www.viewsonic.com**. The **ViewSonic** product also comes with a CD-ROM that has a registration form that you can print and mail or fax to **ViewSonic Corporation**.

### For Your Records

<b>Model Name:</b>	<b>WPG-150 Wireless G Presentation Gateway</b>
<b>Model Number:</b>	<b>VS11692</b>
<b>Document Number:</b>	<b>WPG-150_UG_ENG_ Rev. 1F 10-16-07</b>
<b>Serial Number:</b>	_____
<b>Purchase Date:</b>	_____

## Product disposal at end of product life

ViewSonic is concerned about the preservation of our environment. Please dispose of this product properly at the end of its useful life. Your local waste disposal company may provide information about proper disposal.

# Contents

## Introduction

Package Contents .....	1
Features .....	1
Glossary .....	2
System Requirements .....	2
Front View .....	3
Back View .....	3

## Initial Setup

Connect the WPG .....	4
Access a Wireless Network .....	5
Install the WPG Application On Your PC .....	6

## Run the WPG Application

Wireless Display List .....	7
Connection Failed .....	11
Normal Mode .....	11

## Advanced Configuration

Advanced Settings .....	14
Configure Display .....	17
Display Access Number Security .....	18
Enable Wireless Encryption .....	19
Password Setup .....	26
Upgrade Firmware .....	27
Network Settings .....	28

## Using the WPG

Play Video .....	29
Show Graphic Presentations .....	30

**Troubleshooting & Maintenance**

Reset the WPG ..... 32

    Hard Reset ..... 32

    Soft Reset ..... 32

About ..... 32

Customer Support ..... 33

Wireless Products Disclaimer ..... 33

**Appendix**

Compliance and Safety Notices ..... 34

Specifications ..... 37

Limited Warranty ..... 37

# INTRODUCTION

**IMPORTANT!** The WPG-100 and the WPG-150 are not Wireless Access Points (APs).

Thank you for buying the **ViewSonic® Wireless G Presentation Gateway WPG-150**. The **WPG-150** connects to a projector or display through the VGA or DVI ports and enables you to control projectors and displays wirelessly. Additional product information such as FAQ, specifications, data sheets, etc. may be found on the ViewSonic website. This section introduces you to the **WPG-150** (referred to as the **WPG** in this user guide).

## PACKAGE CONTENTS

These items vary depending on the model.



AC Power  
Adapter with  
regional plugs



Quick Start Guide



**WPG-150**



Ethernet Cable



ViewSonic CD

## FEATURES

- Deliver your presentations wirelessly – bridges wireless PCs to displays/monitors
- Allows any member of the group to take instant control of the display with no cable-swapping hassle
- Allows impromptu display – control switching between clients for interactive meetings
- Real time display of video, PowerPoint® presentations, JPEG images, and applications
- Powerful, high-performance processor for fast and responsive display
- Fast animations and slide transitions for smooth and professional presentation
- Works with virtually any display or projector with VGA or DVI connector
- Application independent – use with all your favorite programs
- 802.11b/g
- Up to 1024x768 resolution
- Versatile, light weight and portable
- Play video or graphics presentations
- Additional Ethernet port so you remain connected to the Internet

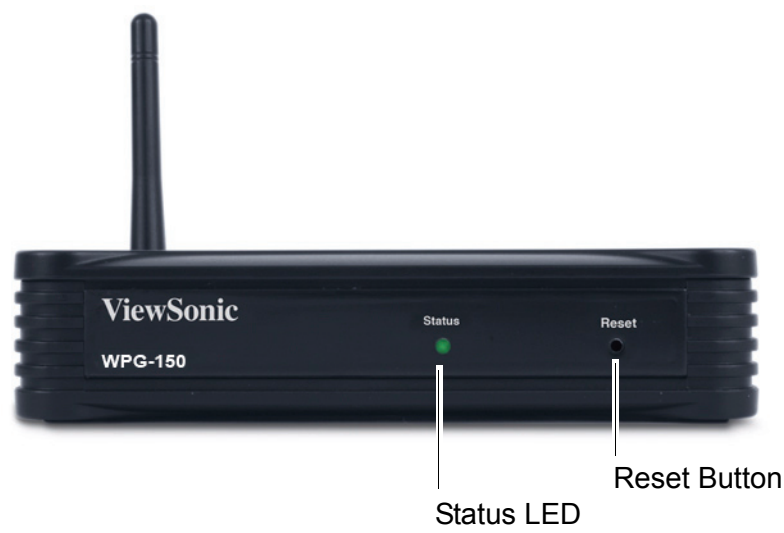
# GLOSSARY

Acronym	Meaning
DHCP Server	Dynamic Host Configuration Protocol
DNS	Domain Name System
DVI	Digital Visual Interface
SSID	Service Set Identifier
TCP/ IP	Transmission Control Protocol/ internet Protocol
VGA	Video Graphics Array
WPA	WiFi Protected Access
WPG	A converter that enables you to wirelessly connect your PC or Laptop computer to a second display

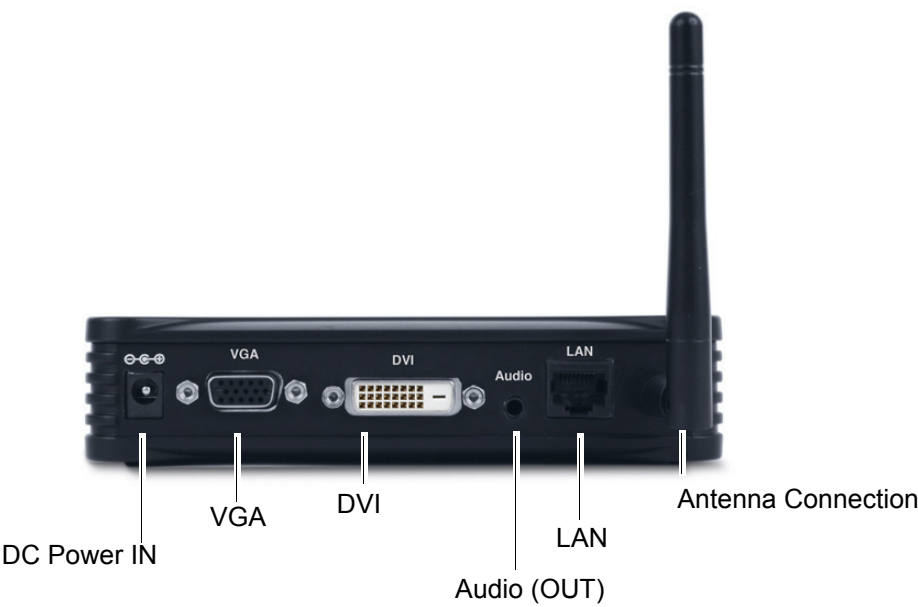
# SYSTEM REQUIREMENTS

PC CPU speed	Pentium 4 or M >1.5 GHz
Memory	512 MB of RAM
Operating Systems	Windows XP Home / Professional Edition SP2 (32-bit); Windows 2000 Professional, SP 4; Windows Vista (32-bit)
Wireless Protocol	802.11 b or g (g is preferable for full motion video)

FRONT VIEW



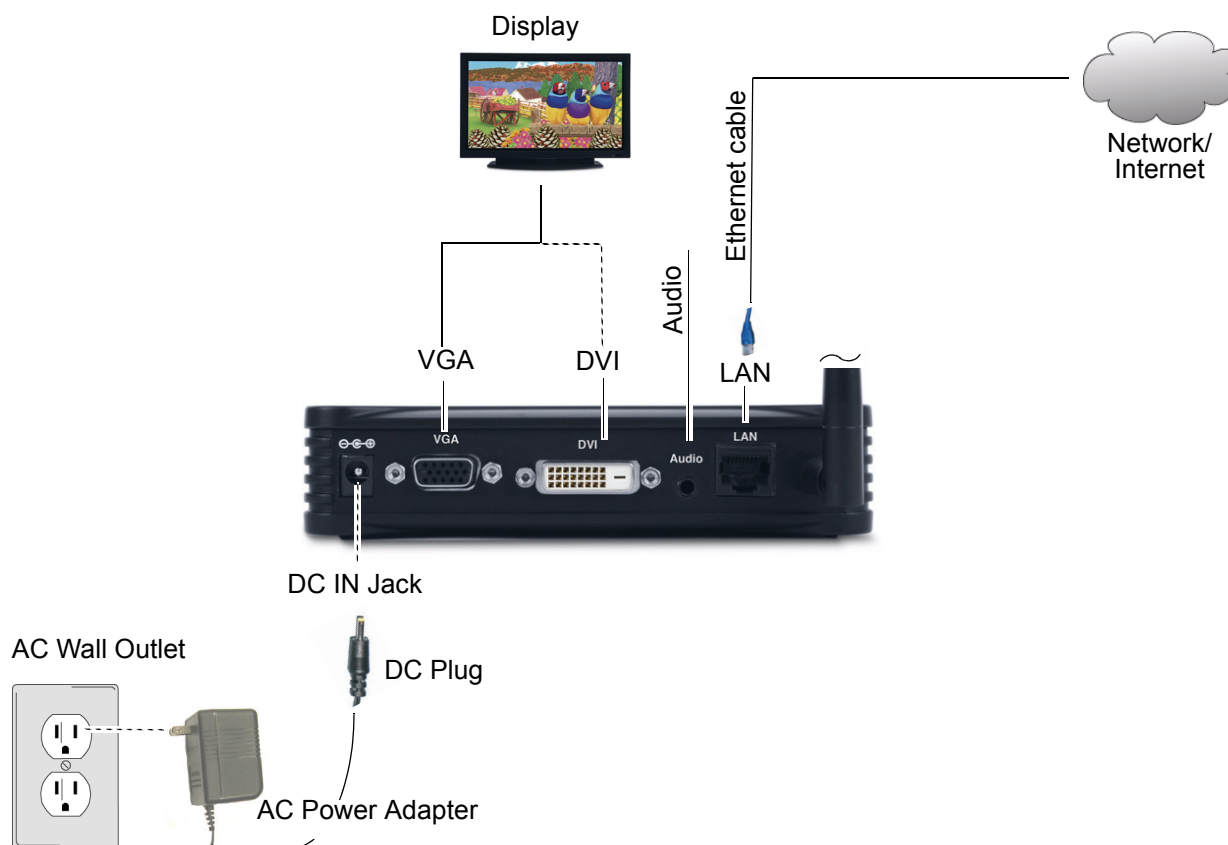
BACK VIEW



# INITIAL SETUP

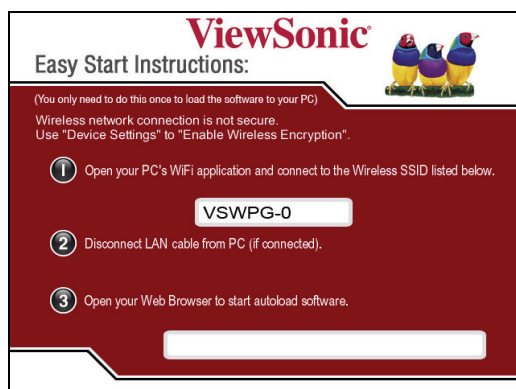
## 1. CONNECT THE WPG

- A. Attach the antenna to the back of the **WPG**.
- B. For an alternate access to the Internet, connect an **Ethernet cable** from the **LAN** port to the LAN/WAN/xDSL/Cable Modem connection to the Internet.
- C. Connect a VGA cable from the **VGA** port (or DVI cable if using the DVI port) to your display (plasma, LCD, monitor, projector, etc).
- D. Connect an audio cable from the **Audio** port to your audio speakers.
- E. Connect the **DC Plug** to the **DC IN Jack** of the **WPG**. Connect the supplied **AC Power Adapter** to an AC Outlet such as an AC wall outlet.





After the **WPG** is connected, the screen shown below appears on your display. Follow the on-screen instructions.



## 2. ACCESS A WIRELESS NETWORK

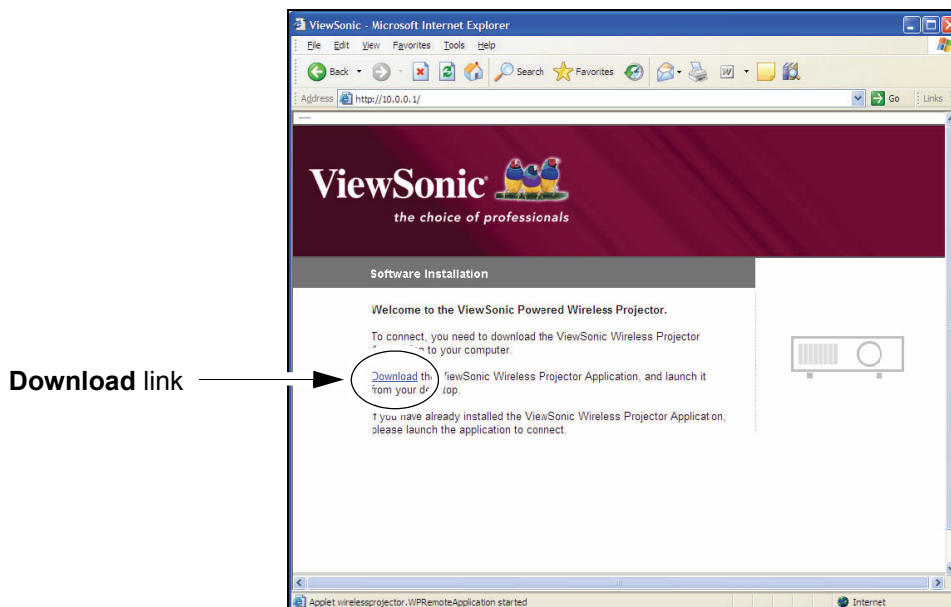
Use your computer's Wireless Network Connection window to access an available wireless network. Select the WPG from the list. Click **Connect**. The default SSID is **WPG150-0**.



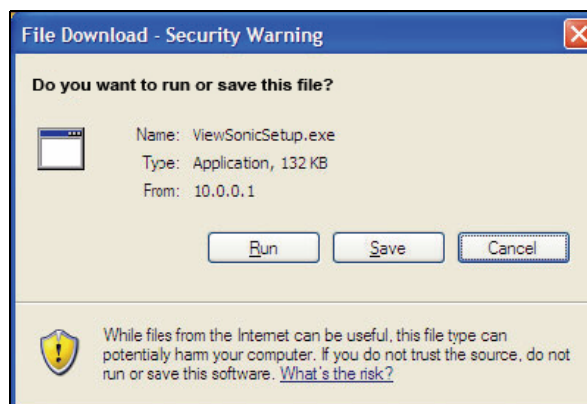
**NOTE:** If using a wireless client other than Windows, the screen above may look differently. For more details, see your PC user guide.

### 3. INSTALL THE WPG APPLICATION ON YOUR PC

Open Internet Explorer. The web page appears as shown below. If not, type <http://10.0.0.1> in the URL field. Click the **Download** link.



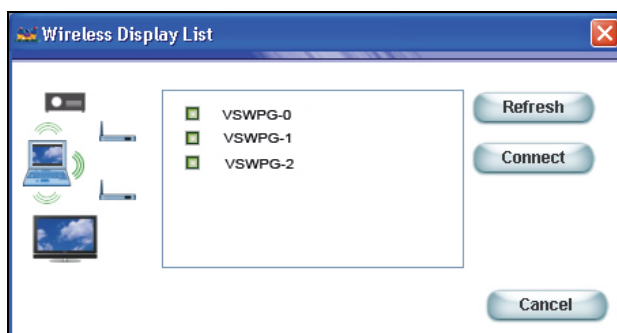
The **File Download** screen shown below appears. Click **Run**. Follow the on-screen instructions. The application runs automatically and connects to the WPG after installation is done. The ViewSonic WPG window appears on your PC in Normal Mode. *For more details, see the Normal Mode section under Initial Setup.*



# RUN THE WPG APPLICATION

## WIRELESS DISPLAY LIST

On your PC desktop, double-click the application icon. If there is only one WPG running in the vicinity, the application automatically connects to that device. If there are multiple WPG's detected, the Wireless Display List appears as shown below. Select the desired WPG > click **Connect**.



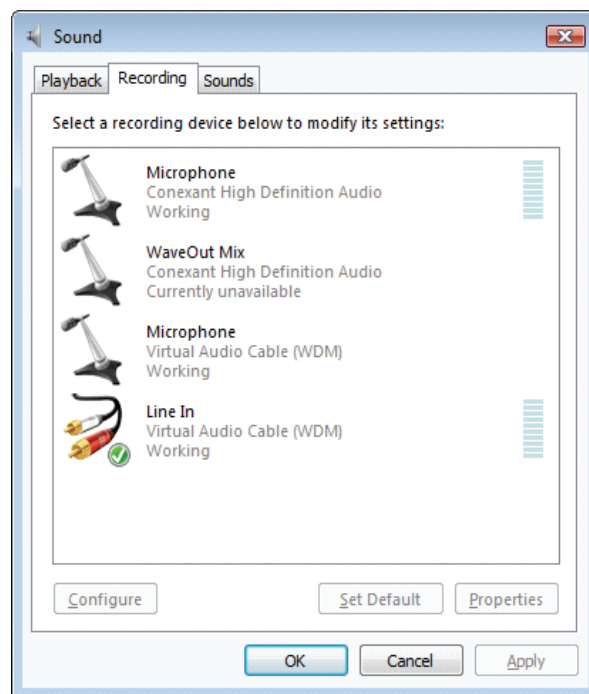
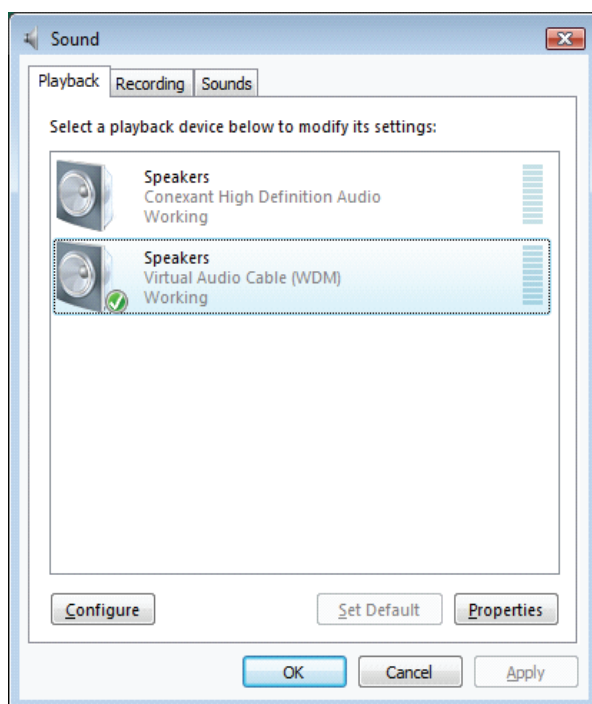
Feature	Description
Display List	Displays the SSIDs of all currently visible ViewSonic WPG's
Refresh button	Updates the displayed list
Connect button	Connects to the selected WPG
Cancel	Closes the List window

## For Windows Vista users:

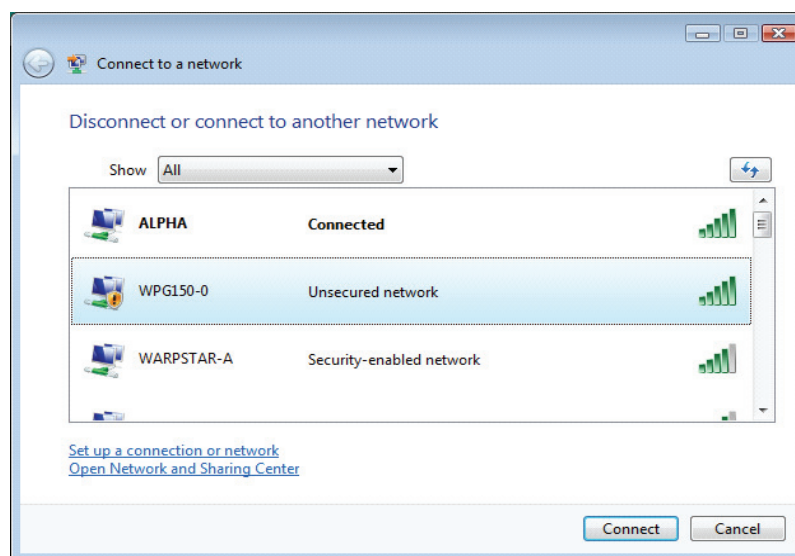
When running WPG Application, the default Playback (Speakers)/Recording (Line In) devices will be set to Virtual Audio Cable (WDM) automatically. Press **OK** to continue.

**Note:** Set the Playback (Speakers)/Recording (Line In) devices to Virtual Audio Cable (WDM) manually if the default devices are not Virtual Audio Cable (WDM).

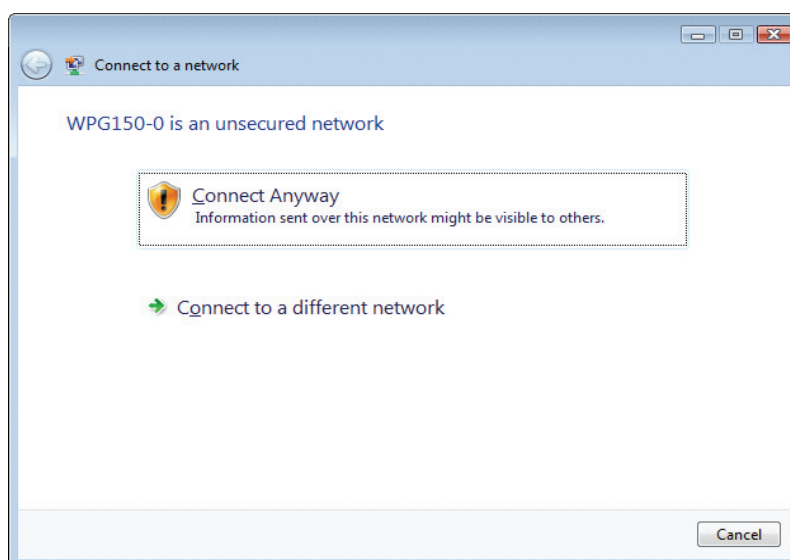
## Pop-up window



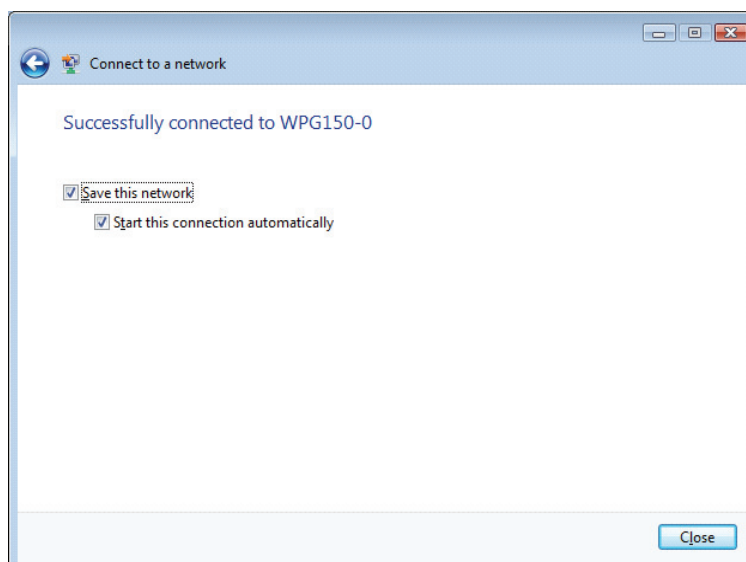
Use your computer's “**Connect to a network**” window to access an available WPG from the list. Click **Connect**. The default SSID is WPG150-0.



If security settings are not in place, the SSID is an unsecured network. Click the **Connect Anyway** option.



A message confirms the WPG150 is connected to the network.



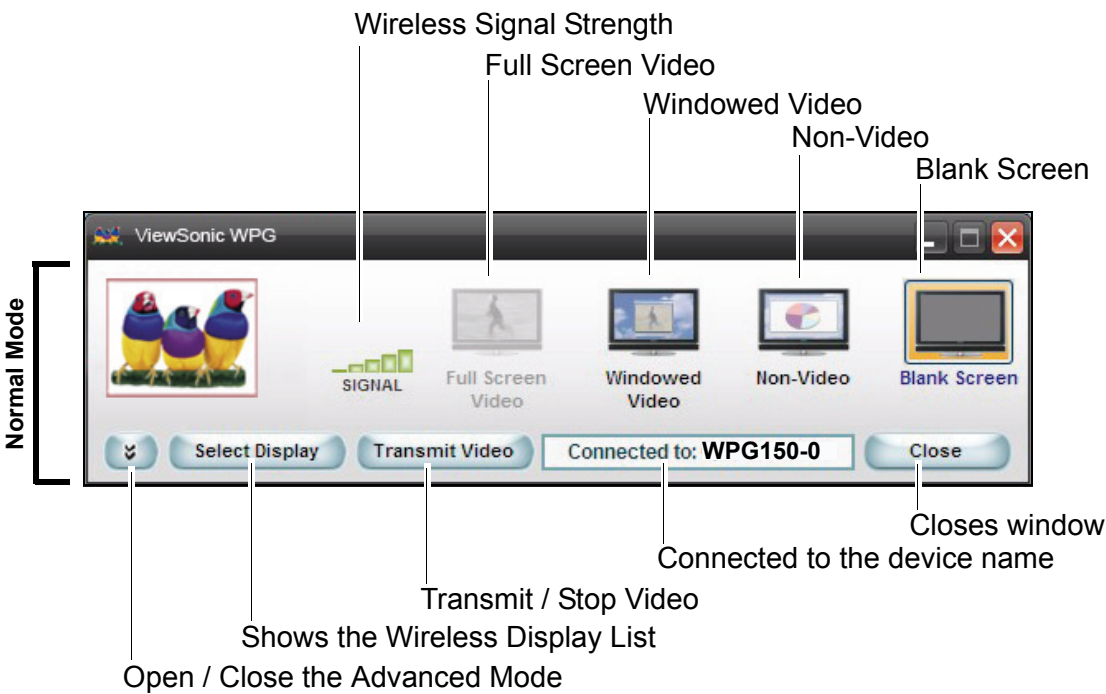
# CONNECTION FAILED

If you select a display that is not available, the screen shown below appears. Click **OK** and make another selection.



# NORMAL MODE

Once connected, the main application screen for the **ViewSonic WPG** appears in normal mode as shown below. Your PC desktop starts projecting automatically on your display or through your projector.



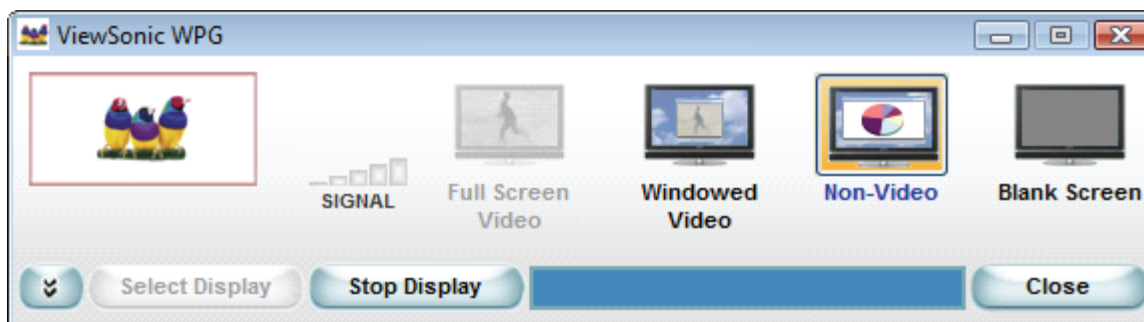
Feature	Description
<b>Wireless Signal Strength</b>	It is the current wireless signal strength in graphical form.
<b>Full Screen Video</b>	Displays the selected media player in full screen mode. Participates in a radio button group with "Windowed Video," "Non-Video" and "Blank Screen". When selected, causes live video to be displayed full screen within the display device using the settings on this window. The button is only enabled when video is playing in Extended Mode.
<b>Windowed Video</b>	Displays the selected media player in Windowed mode. Participates in a radio button group with "Full Screen Video," "Non-Video" and "Blank Screen." When selected causes live video to be displayed within a window within the display device using the settings on this window.
<b>Non-Video</b>	Used to display graphics and presentations. Participates in a radio button group with "Full Screen Video", "Windowed Video" and "Blank Screen". When selected causes the video to be stopped within the display device using the settings on this window.
<b>Blank Screen</b>	Stops displaying the users presentation or video, including audio, without closing the connection between the PC and the WPG. Participates in a radio button group with "Full Screen Video" , "Windowed Video" and "Non-Video". When selected causes a blank screen to be shown on the ViewSonic display.
<b>Open / Close Advanced Options</b>	This button opens and closes the Advanced Mode for Advanced Configuration.
<b>Select Display</b>	Generates the "Wireless Display List" dialog box, comprising of the list of SSIDs. For more information, see the section on the "Wireless Display List under Initial Setup.
<b>Transmit Video / Stop Display</b>	To Start/ Stop transmission of video.
<b>Connected to:</b>	The SSID of the device of the current connection. It is a Read-only field. Changes whenever new device is selected
<b>Close</b>	Closes the application.



## For Windows Vista Users

Once connected, the main application screen for the ViewSonic WPG appears in normal mode as shown below. Your PC desktop starts projecting automatically on your display or through your projector.

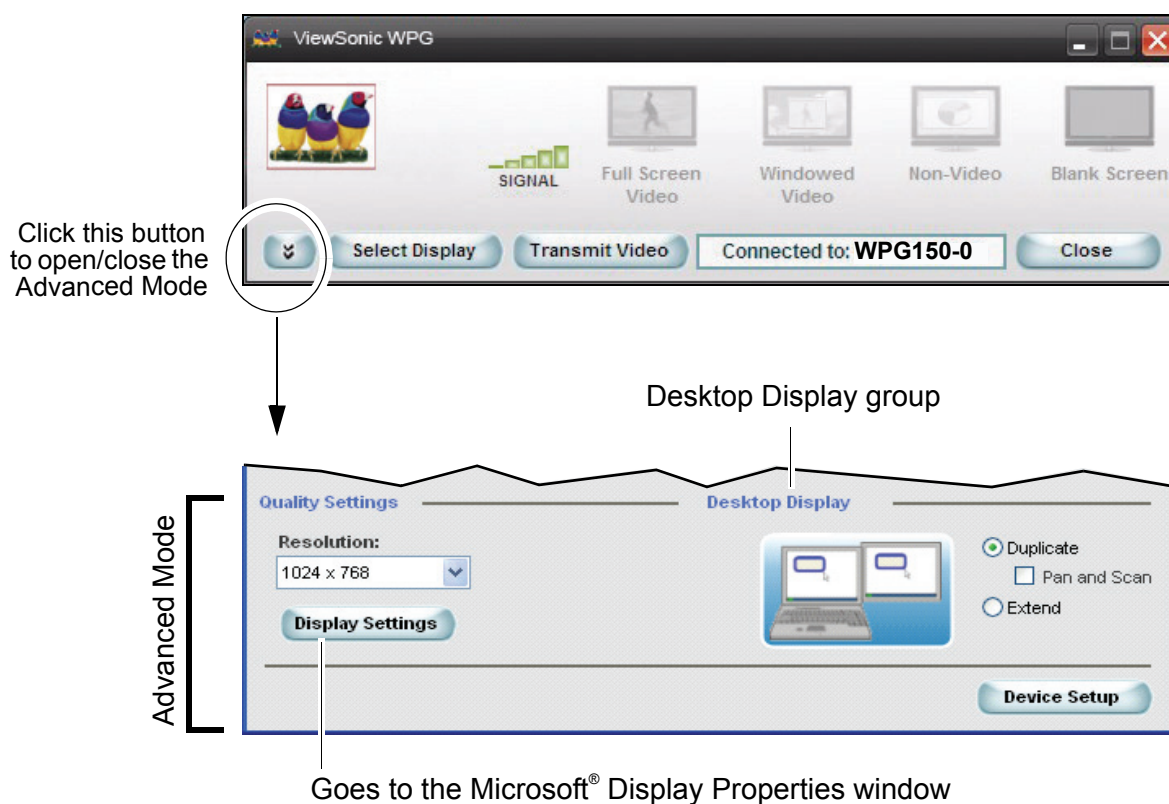
**Note:** **SIGNAL** and **Select Display** functions were disabled in Windows Vista OS.



# ADVANCED CONFIGURATION

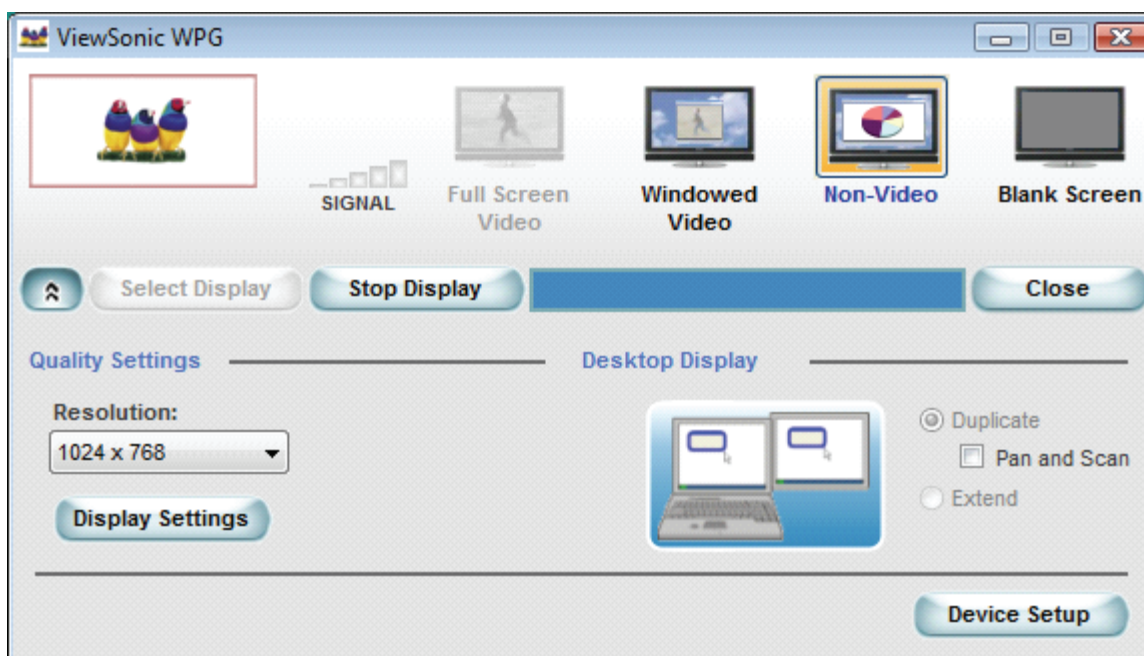
## ADVANCED SETTINGS

For the Advanced Settings, click the down arrow on the main screen shown below.



## For Windows Vista User

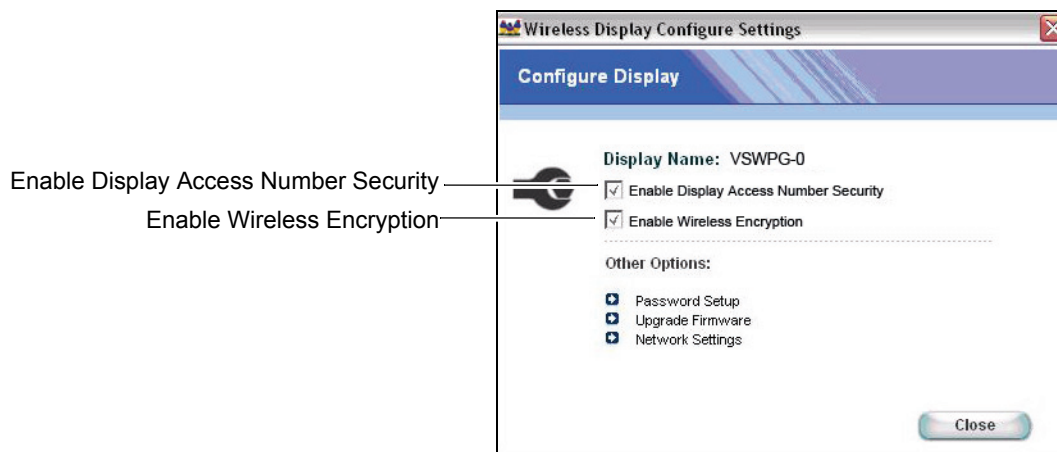
The **Desktop Display** function was disabled in Windows Vista OS, the user can mirror the current desktop screen to the WPG display screen only.



Feature	Description
<b>Advanced Mode</b>	To change Advanced Settings.
<b>Resolution</b>	Current resolution setting. Drop down list of all supported resolutions up to the maximum resolution of the device. The field will auto update when the video transmission slider is selected or moved.
<b>Display Settings</b>	Allows you to change the display settings of your computer and display device. Brings up the Microsoft <sup>®</sup> Display Properties window including Color quality settings.
<b>Device Setup</b>	Brings up the Wireless Display Configuration Settings window
<b>Desktop Display</b>	<p>This group of settings controls how the PC desktop interacts with the WPG device.</p> <p><b>Duplicate:</b> This mode mirrors the current desktop screen.</p> <p><b>Pan and Scan:</b> If checked, the WPG display uses pan and scan method if the PC and WPG display resolutions are different. Disabling Pan and Scan will default the WPG display resolution to the previous setting.</p> <p><b>Extend:</b> This mode extends the PC desktop to the WPG display screen. This setting is recommended when playing videos or working with two different screens at the same time.</p>
<b>Close</b>	Closes the window.

# CONFIGURE DISPLAY

The screen appears as shown below.



Feature	Description
<b>Display Name</b>	Name of the device you are connected to.
<b>Enable Display Access Number Security</b>	Allows for a randomly generated 4 digit number to be added to the displays splash screen that has to be entered in order to connect and project to that display.
<b>Enable Wireless Encryption</b>	Check this box to enable WPA-PSK TKIP key encryption between the PC and the WPG.
<b>Password Setup</b>	User will have to enter a password in order to access the "Settings" window. This means that only the person with the password can modify the settings.
<b>Upgrade Firmware</b>	If the WPG is connected to the Internet then this button will check for new software releases and if found will install them for you. If you do upgrade the firmware, first the WPG is upgraded, then to upgrade the software on your computer you have to uninstall the application and following the steps outlined in Software Installation to install the new software version onto your PC.
<b>Network Settings</b>	You can change the SSID wireless channel and LAN settings.

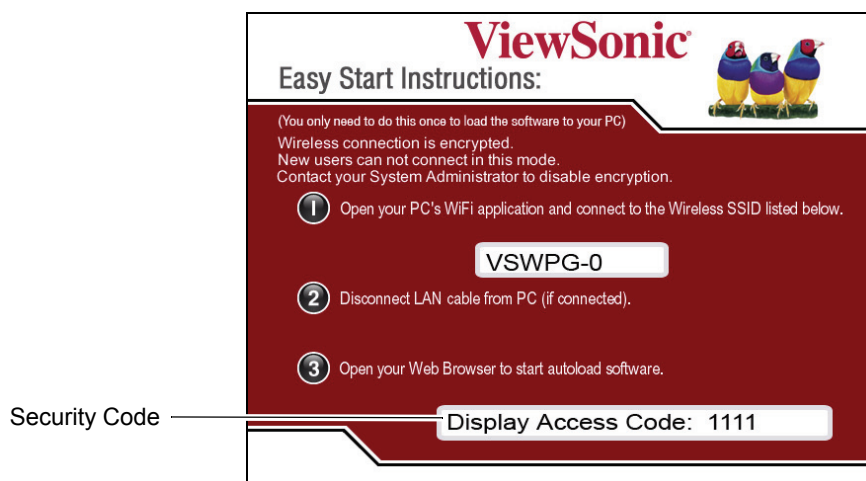
# DISPLAY ACCESS NUMBER SECURITY

Check the box labeled Enable Display Access Number Security to activate the randomly generated code. This feature is highly recommended and prevents anyone who does not have visual access to the Splash Screen (i.e. People outside of conference rooms) from connecting to the WPG device. When the application runs, the Pop-up window shown below asks for the security code that appears on the bottom portion of the Splash Screen shown below. In the **Display Access Number** field, type the code > click **OK**.

Pop-up window



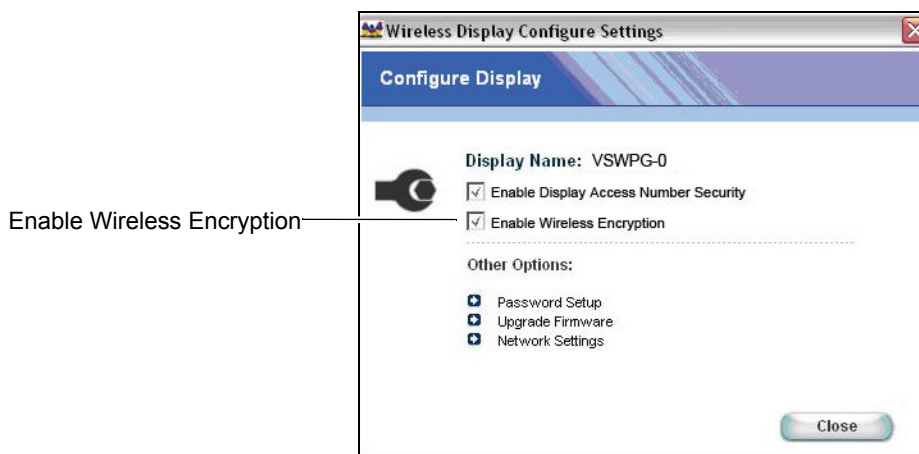
Splash Screen



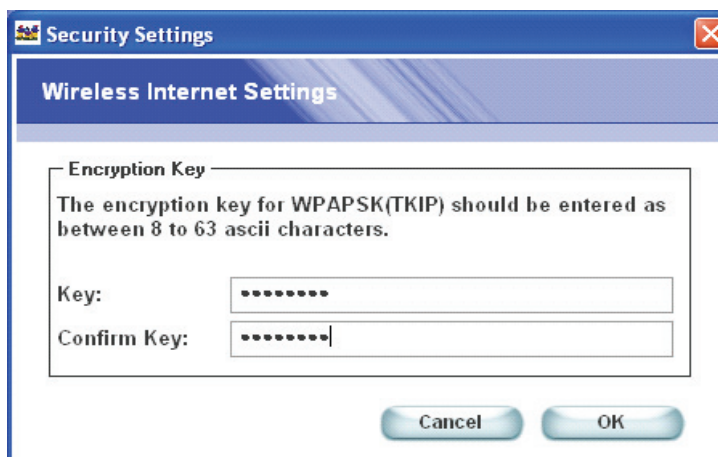
# ENABLE WIRELESS ENCRYPTION

Check the **Enable Wireless Encryption** box shown below if you want to enable WPA-PSK TKIP key encryption between your PC and the WPG.

**NOTE:** When encryption is enabled, a new user will not be able to download the application unless the System Administrator provides the WPA-PSK TKIP key to the new user.



Type 8 to 63 ASCII characters as the key for WPA-PSK TKIP encryption. Enter the Key > Confirm Key > Click **OK**.

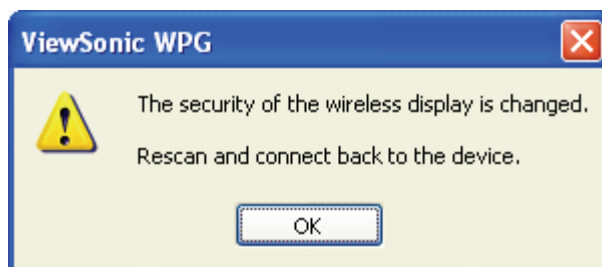


If the encryption keys entered do not match, the screen shown below appears.



After enabling Wireless Encryption, the wireless connection will be disconnects, user must **Select Display** and **Connect** back to the WPG.

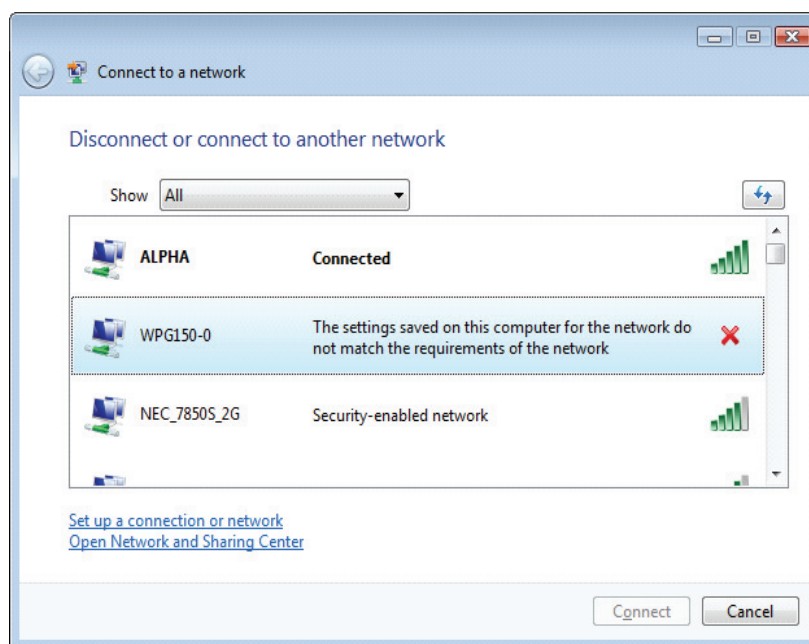
Pop-up window



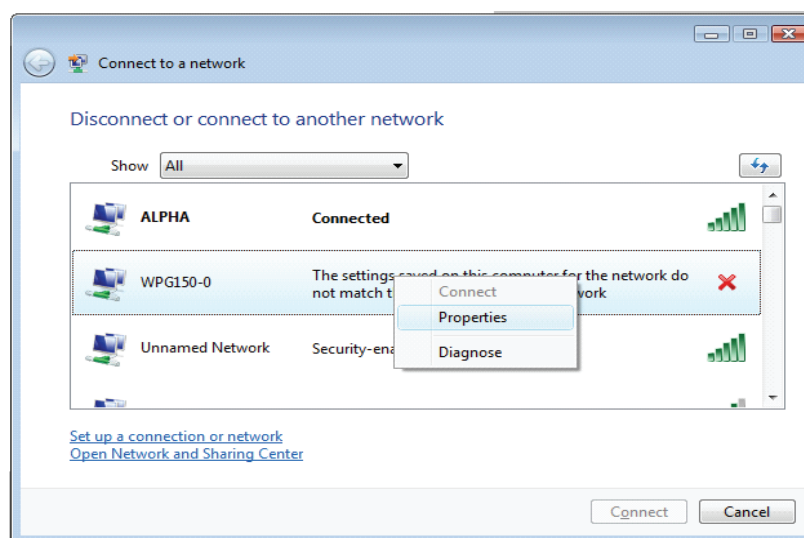


## For Windows Vista User

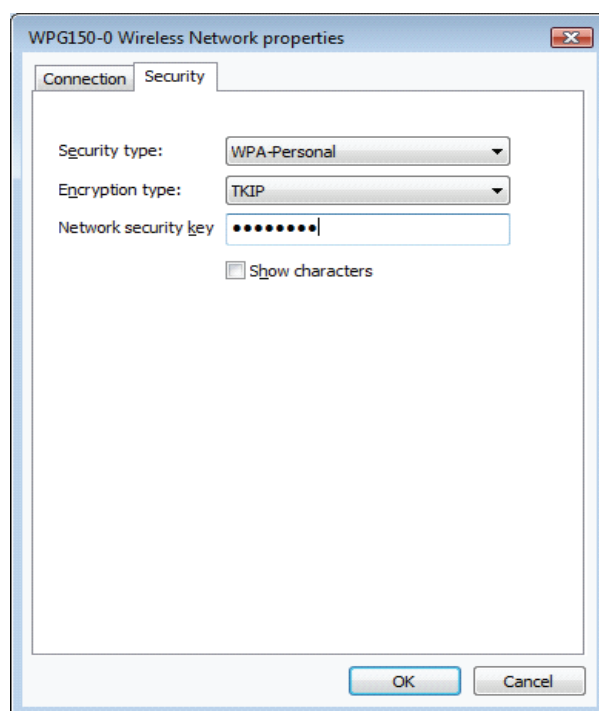
After enabling Wireless Encryption, the wireless connection will be disconnected, user must change WPG Wireless Network Properties:



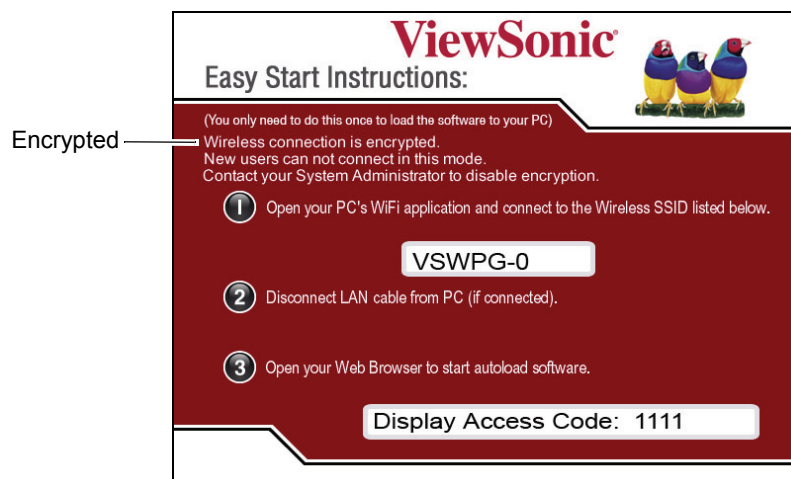
Select **Properties** from the menu.



Set **Security Type** to "WPA-Personal", select "TKIP" for the **Encryption Type** and type the **Network Security Key** > Click **OK**

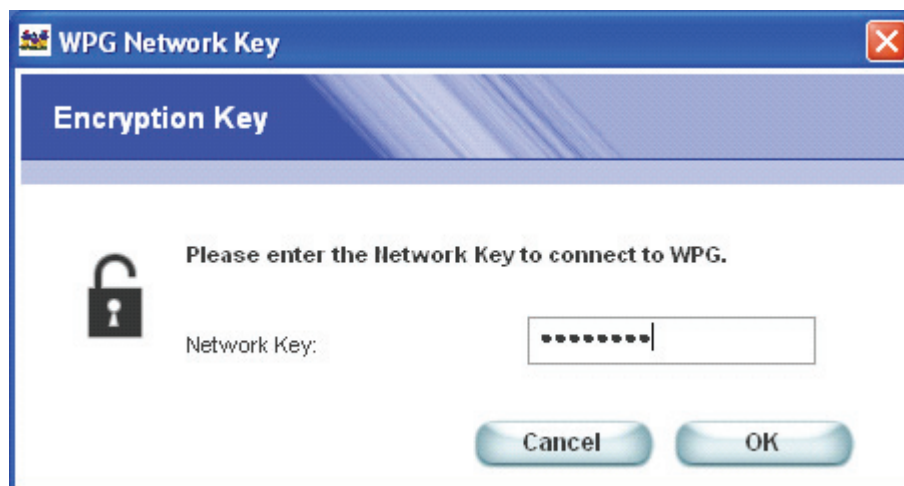


The Splash screen below indicates a secured WPG.



The next time a user connects to WPG, type the WPA-PSK TKIP key > Click **OK**.

Pop-up window

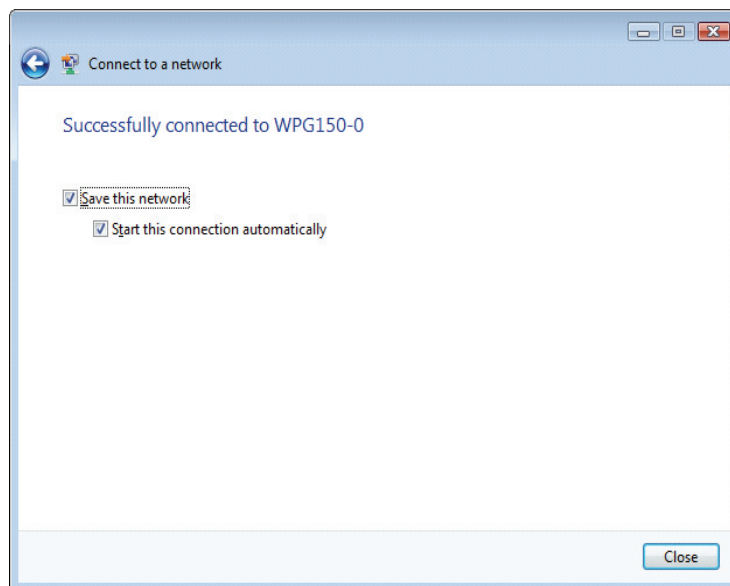


### For Windows Vista Users

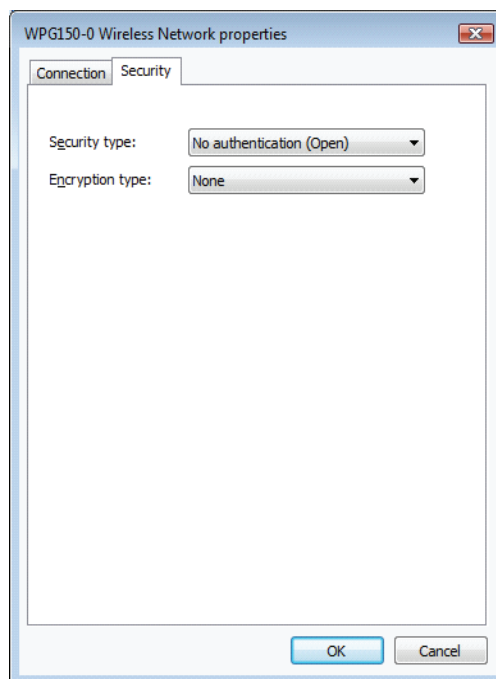
**Security Key** assigned by the System Administrator when connecting to a secured WPG for the first time. Type the Security key and click on **Connect**.



A successful connection is indicated by a new message.



**Note:** For unsecured WPG, the default settings of WPG Wireless Network Properties are:  
**Security Type:** "No Authentication (Open)"; **Encryption Type:** "None".



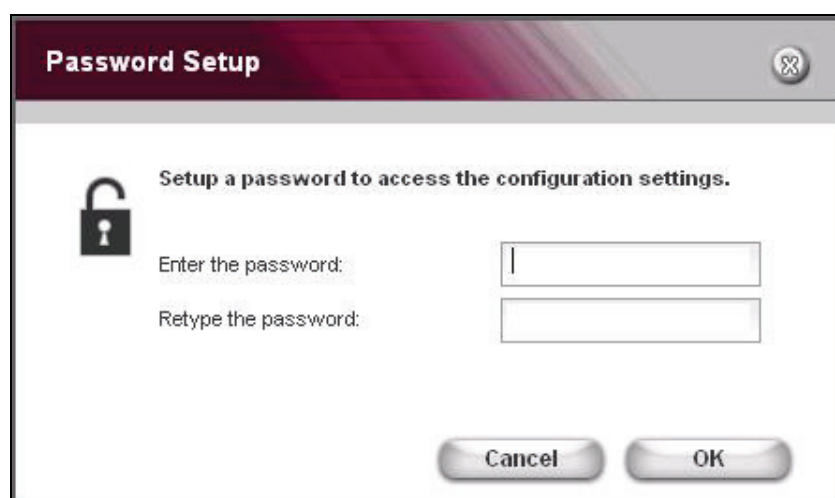
The System Administrator can Change the Wireless Encryption Key by pressing "**Setting**" button.



# PASSWORD SETUP

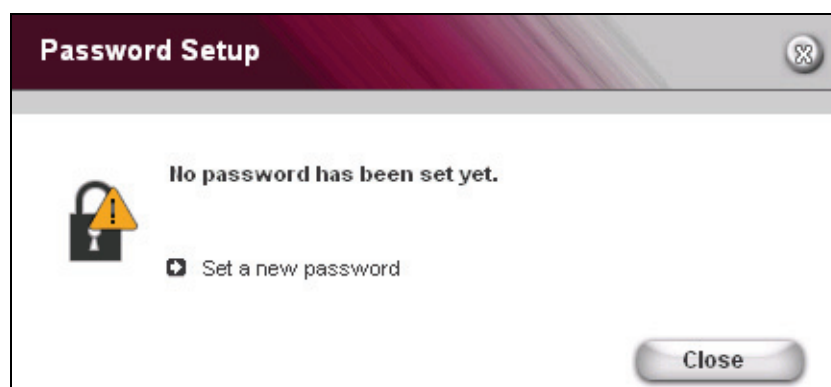
Set up a password to prevent unauthorized access to your display settings as follows:

From the **Wireless Display Configure Settings** screen, select **Password Setup**. The **Password Setup** screen appears as shown below. Enter a password > retype the password > **OK**.



The image shows a 'Password Setup' dialog box. It has a title bar with the text 'Password Setup' and a close button. The main content area contains a lock icon, the text 'Setup a password to access the configuration settings.', and two input fields labeled 'Enter the password:' and 'Retype the password:'. At the bottom, there are 'Cancel' and 'OK' buttons.

If a password has not been setup, the screen shown below appears.



The image shows a 'Password Setup' dialog box. It has a title bar with the text 'Password Setup' and a close button. The main content area contains a lock icon with a warning triangle, the text 'No password has been set yet.', and a button labeled 'Set a new password'. At the bottom right, there is a 'Close' button.

# UPGRADE FIRMWARE

**IMPORTANT!** After upgrading the firmware, you need to uninstall the software from your PC. To uninstall the software from your PC, click the **Windows® Start** button > click **Programs** > **ViewSonic WPG** > **Uninstall**.

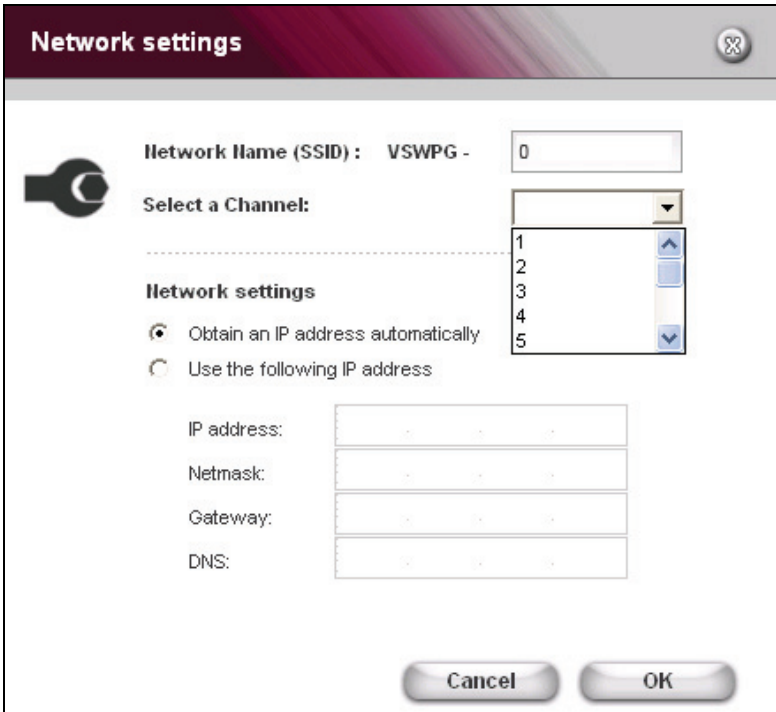
**IMPORTANT NOTE!** Your WPG LAN port must be connected to the Internet in order for the device to check for an updated firmware.

From the Configure WPG screen, click **Upgrade Firmware**. If your firmware is the latest version, the screen below appears.



# NETWORK SETTINGS

In the **Network Name** field, enter your desired SSID > **Select a Channel** from the pull-down menu > click **OK**.



If you are having performance issues with your WPG, try selecting a different channel.

Feature	Description
Network Name	You can change the SSID by entering a new one and choosing OK.
Select a Channel	By default, the wireless channel is automatically chosen for you during boot up. You can change the channel if needed by choosing a different one on the drop down menu then clicking OK.
Network Settings	This is for your LAN Connection. By default, it is set to automatically obtain an IP Address. If you wish to use a Static Address, click Use the following address, enter the parameters, and then click OK.

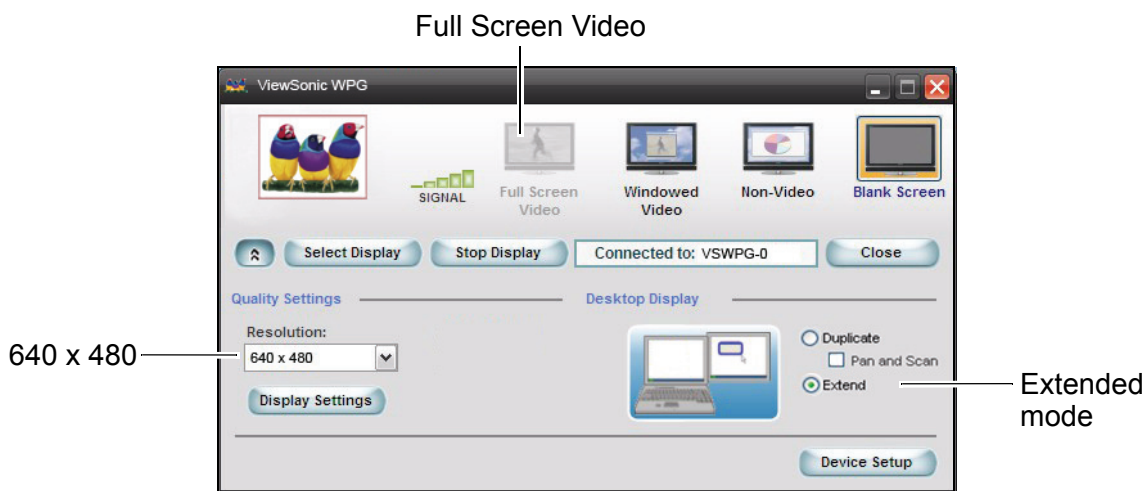


# USING THE WPG

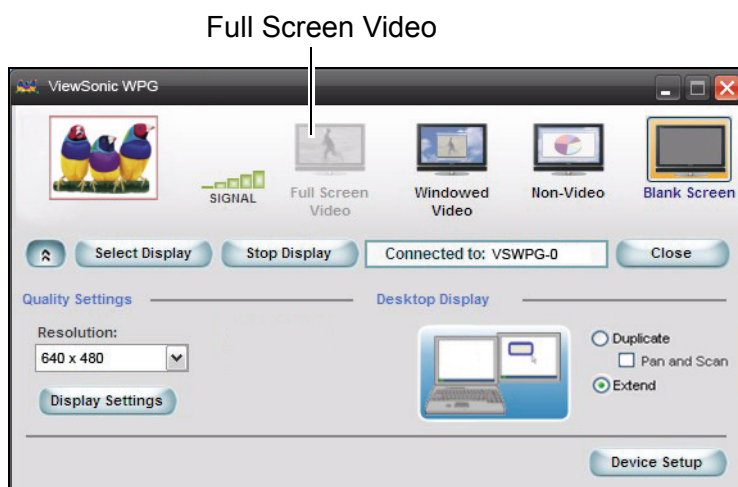
This section shows how you can use the WPG to do the following: play video files or other graphic files such as Power Point®, Word documents, spreadsheets, etc.

## PLAY VIDEO

1. To play video, put your display in **Extended Mode** and select **640 x 480** Resolution.

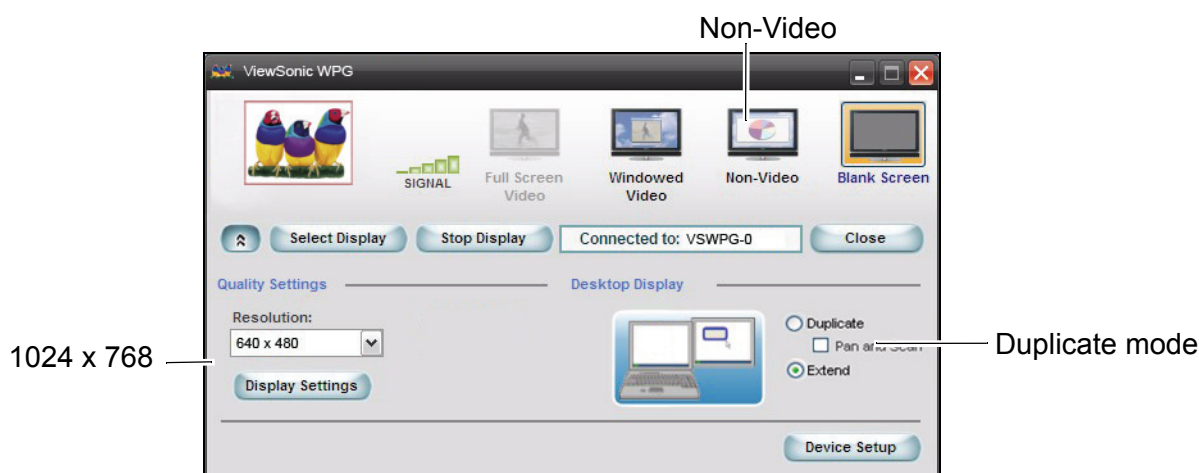


2. Play a video file using your PC's Media Player. As the video is playing, right click on the Media Player task tray, click **Move to Display**. You should now see the video any projector or monitor connected to the WPG. **IMPORTANT!** To play the video smoothly, click **Full Screen Video** on the screen shown below on your PC.



# SHOW GRAPHIC PRESENTATIONS

1. To show a graphic presentation such as a Power Point presentation, a Word document, or an Excel® spreadsheet, select **Duplicate** mode as shown below > select **Non-Video**, and change the resolution as desired: for faster PCs (2 GB and above) you can select up to 1024 x 768. Otherwise, 800 x 600 and below is recommended.



2. Open your graphic presentation (not a video). Now you should see your graphic presentation on your display.

## Blanking the Screen

When delivering presentations, sometimes it is necessary to turn the screen off first when doing something you do not want others to see. To blank the screen, click the “Blank Screen” button shown above. The WPG displays a blank screen while still connected wirelessly.

## KNOWN ISSUE:

### Wireless LAN Connection Disconnects

#### Symptom(s):

Some wireless LAN client connections are intermittently dropped from some networks followed by a new client association to either the same Access Point or another Access Point. Some applications may lose their connections.

Wireless LAN protocol analyzer traces will reflect a high number of retransmissions to the client. Access Point logs may reflect affected clients not authenticated because of too many retries. This topic applies only to the following adapters:

- Intel® PRO/Wireless 2915ABG Network Connection
- Intel® PRO/Wireless 2200BG Network Connection

This topic applies only to adapters using driver version 9.0.4.8 or earlier. This issue does not occur on all computers or on all networks.

#### Cause:

A timing issue in the driver causes clients to sometimes drop frames for a long enough period to cause disconnects in some environments.

#### Solution:

**This issue is resolved by upgrading the driver software to version 9.0.4.13.**

The new driver is included with Intel® PROSet/Wireless software version 10.1.1. For information on software availability and downloads see Download Windows\* Software for Intel® PRO Wireless Network Connection.

### Work Around:

One of the following work arounds can be implemented as a temporary solution.

1. Configure the access points to use long preamble.
2. If the 1 Mbps data rate is disabled, then enable 1 Mbps data rate on the access points.

This applies to: Intel® PRO/Wireless 2200BG Network Connection  
Intel® PRO/Wireless 2915ABG Network Connection

Solution ID: CS-022509

Date Created: 03-Apr-2006

Last Modified: 20-Jul-2006

<http://www.intel.com/support/wireless/wlan/sb/cs-022509.htm>

# TROUBLESHOOTING & MAINTENANCE

This section gives solutions to common **WPG** problems you may encounter when using the device and guidelines for taking care of your **WPG**. If you encounter a problem that you cannot solve, contact your reseller or **ViewSonic Customer Support**. See the “*Customer Support*” section for contact information. Additional product information such as FAQ, specifications, data sheets, etc. may be found on the ViewSonic website.

## RESET THE WPG

### HARD RESET

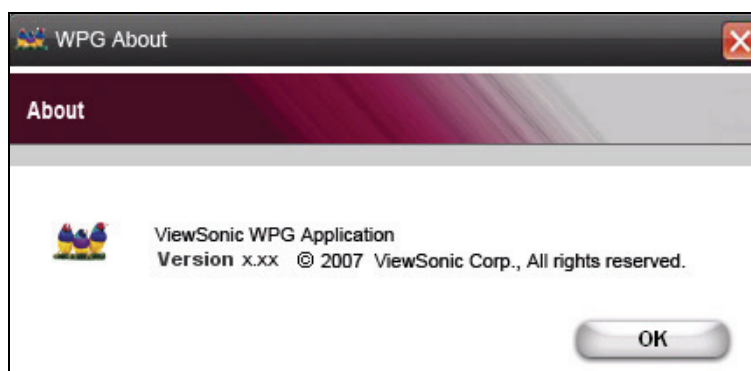
**NOTE:** If for any reason you forget the password or the encryption key that has been set, you can use the Hard Reset default back to factory settings. To Hard Reset, press the **Reset** button on the back of the device for five (5) seconds or more.

### SOFT RESET

To Soft Reset, press the Reset button momentarily for about one (1) second. The LED turns off for two (2) seconds. The system reboots with all the user set parameters intact.

## ABOUT

The About window shows the ViewSonic version of the WPG software application.



## CUSTOMER SUPPORT

For Customer Support, you will need the product serial number. Before sending the **WPG-150** out for service, be sure to back up all data and remove all third party software.

Country/Region	Website (may have email address also)	Phone Fax
United States	viewsonic.com	Phone: 800-688-6688 Fax: 909-468-1202
Canada	viewsonic.com	Phone: 866-463-4775 Fax: 909-468-5814
United Kingdom	viewsoniceurope.com	Phone: 0800-833-648 Fax: 0179-450-0801
Europe, Middle East, Baltic countries, and North Africa	viewsoniceurope.com	Contact your reseller
Australia and New Zealand	viewsonic.com.au	Phone: 61-2-9929-3955 Fax: 61-2-9929-8393
Singapore/India and Southeast Asia	viewsonic.com.sg	Phone: 65-273-4018 Fax: 65-273-1566
Taiwan	viewsonic.com.tw	Phone: 866-2-2246-3456 Fax: 866-2-8242-3733
Other Asia Pacific countries		Contact your reseller
South Africa	viewsonic.com/asia	Phone: 886-2-2246-3456 Fax: 886-2-8242-3668

## WIRELESS PRODUCTS DISCLAIMER

The actual data throughput rate may vary depending on several factors including but not limited to the following: (1) network conditions (volume of network traffic, network overhead, etc.) and (2) environmental factors (power surge, building materials, and construction, etc.).

# APPENDIX

## COMPLIANCE AND SAFETY NOTICES

### Radio Frequency Interference (RFI) compliance

#### United States compliance notice

This equipment has been tested and found to comply with the limits for a Class B digital device, pursuant to Part 15 of the Federal Communications Commission (FCC) Rules. These limits are designed to provide reasonable protection against harmful interference in a residential installation. This equipment generates, uses, and can radiate radio frequency energy and, if not installed and used in accordance with the instructions, may cause harmful interference to radio communications. However, there is no guarantee that interference will not occur in a particular installation. If this equipment does cause harmful interference to radio or television reception, which can be determined by turning the equipment off and on, the user is encouraged to try to correct the interference by one or more of the following measures:

- Reorient [move] or relocate the receiving antenna.
- Increase the separation [distance] between the equipment and the receiver.
- Connect the equipment to an outlet on a different circuit than what the receiver is connected to.
- Consult the dealer or an experienced radio or television technician for help.

**CAUTION:** The Part 15 radio device operates on a non-interference basis with other devices operating at its frequency. Any changes or modification to said product not expressly approved could void the user's authority to operate this device.

FCC Caution: Any changes or modifications not expressly approved by the party responsible for compliance could void the user's authority to operate this equipment.

This device complies with Part 15 of the FCC Rules. Operation is subject to the following two conditions: (1) This device may not cause harmful interference, and (2) this device must accept any interference received, including interference that may cause undesired operation.

The antenna(s) used for this transmitter must not be co-located or operating in conjunction with any other antenna or transmitter.

#### Power supply safety notice

The power supply provided with this device is for use with this device only. Replace only with the same or equivalent type power supply as recommended by the manufacturer.

## IMPORTANT NOTE: FCC Radiation Exposure Statement:

This equipment complies with FCC radiation exposure limits set forth for an uncontrolled environment. This equipment should be installed and operated with minimum distance of **2.5cm** between the radiator (equipment) and your body.

Proper operation of this radio according to the instructions found in this user's guide will result in user exposure that is substantially below the FCC recommended limits.

- Do not touch or move antenna while the unit is transmitting or receiving.
- Do not hold any component containing the radio such that the antenna is very close or touching any exposed parts of the body, especially the face or eyes, while transmitting.
- Do not operate a portable transmitter near unshielded blasting caps or in an explosive environment unless it is a type especially qualified for such use.
- Do not operate the radio or attempt to transmit data unless the antenna is connected: if not, the radio may be damaged.

## Canadian compliance notice

**English:** This digital apparatus does not exceed the Canada ICES-003 Class B limits for radio noise emissions from digital apparatus as set out in the radio interference regulations of the Canadian Department of Communications.

**French:** Le present appareil numerique nemet pas de bruits radioelectriques depassant les limites applicables aux appareils numeriques de Canada ICES-003 Class B prescrites dans le reglement sur le brouillage radioelectrique edicte par le Ministere des Communications du Canada.

## European compliance notice

Products with the CE Marking comply with both the EMC Directive (89/336/EEC) and the Low Voltage Directive (73/23/EEC) issued by the Commission of the European Community. Compliance with these directives implies conformity to the following European Norms:



- EN55022 (CISPR 22) Radio Frequency Interference
- EN55024 (IEC61000-4-2, -4-4, -4-5, -4-6, -4-11)
- EN60950 (IEC950) Product Safety

## Declaration of RoHS Compliance

This product has been designed and manufactured in compliance with Directive 2002/95/EC of the European Parliament and the Council on restriction of the use of certain hazardous substances in electrical and electronic equipment (RoHS Directive) and is deemed to comply with the maximum concentration values issued by the European Technical Adaptation Committee (TAC) as shown below:



Substance	Proposed Maximum Concentration	Actual Concentration
Lead (Pb)	0.1%	<0.1%
Mercury (Hg)	0.1%	<0.1%
Cadmium (Cd)	0.01%	<0.01%
Hexavalent Chromium (Cr <sup>6+</sup> )	0.1%	<0.1%
Polybrominated biphenyls (PBB)	0.1%	<0.1%
Polybrominated diphenyl ethers (PBDE)	0.1%	<0.1%

Certain components of products as stated above are exempted under the Annex of the RoHS Directives as noted below. Examples of exempted components are:

1. Mercury in compact fluorescent lamps not exceeding 5 mg per lamp and in other lamps not specifically mentioned in the Annex of RoHS Directive
2. Lead in glass of cathode ray tubes, electronic components, fluorescent tubes, and electronic ceramic parts (e.g. piezoelectronic devices)
3. Lead in high temperature type solders (i.e. lead-based alloys containing 85% by weight or more lead)
4. Lead as an alloying element in steel containing up to 0.35% lead by weight, aluminium containing up to 0.4% lead by weight and as a copper alloy containing up to 4% lead by weight.

### For EU-member states only as follows

The mark shown to the right is in compliance with the Waste Electrical and Electronic Equipment Directive 2002/96/EC (WEEE). The mark indicates the requirement NOT to dispose the equipment as unsorted municipal waste, but use the return and collection systems according to local law.





# SPECIFICATIONS

<b>Dimensions</b>	5.98" (L) x 3.24" (W) x 1.40" (H) 152.0 mm (L) x 82.4 mm (W) x 35.5 mm (H)		
<b>Weight</b>	Net Wt. 1/2 lb.	Gross Wt. 1.25 lbs.	
<b>Connectivity</b>	Network connectivity	802.11 Wireless	Reverse SMA antenna jack 2dB antenna IEEE 802.11 b+g
		10/100 Ethernet	IEEE 802.3/802.3u compliant Supports Full Duplex operations IEEE 802.3x flow control support for Full duplex mode Crosslink cable support
		Audio output	Stereo 3.5 mm mini-jack output for the display's audio IN or external amplified speakers
	Video output	DVI	Hot plug detection Up to XGA resolution Up to 16-bit color depth Up to 75 Hz refresh rate
		VGA	Up to XGA resolution Up to 16-bit color depth Up to 75 Hz refresh rate
<b>Environment</b>	Power	5 VDC Wall-type Power Adapter	
	Temperature	Operation	0° to 40° C (32° to 104° F)
		Storage	-25° to 55° C (13° to 131° F)
	Humidity	Operation	20 to 95% RH (no cond.)
		Storage	50 to 95% RH (no cond.)
<b>Software</b>	Wireless G Presentation Gateway software application		
<b>Regulatory Approvals</b>	FCC-15B, FCC-15C, IC-ES003B, IC-RSS210, ETL, BSMI, NCC DGT, KTL, MIC, RRL, IDA, CB, CE, C-Tick, CCC, SRRC, NOM		

## LIMITED WARRANTY

Please go to the Customer Support table in this guide for the ViewSonic website in your region to get warranty information.

