

# Colortrac Series

## A Versatile range of High Performance Colour & Monochrome Solutions for Professional Digital Imaging Services, Corporates & Copy Shops

**Colortrac Series Scanners** are designed to provide a flexible range of formats and quality options to meet the needs of the target application. Each scanner benefits from specialised scanning technology developed by **ACTion Imaging Solutions** to create competitive advantages for its customers. This innovative technology is delivered in modular solutions incorporating software, mechanical design, optics, firmware and advanced digital image processing electronics.

**Formats and Resolutions.** The Colortrac scanners are available in a range of four carefully selected scan widths, handle originals up to 12mm thick and, with three basic resolution options, provide the best performance and quality for the application.

36"/400 dpi: General A0/E graphics imaging and copying applications  
36"/800 dpi: A0/E basic GIS & CAD scanning, archiving & graphics copying  
42"/800 dpi: B0 basic GIS & CAD scanning, archiving & graphics copying  
48"/600 dpi: A0/E landscape format, general graphics imaging & copying  
54"/800 dpi: A0/E landscape, professional imaging services & LF copying

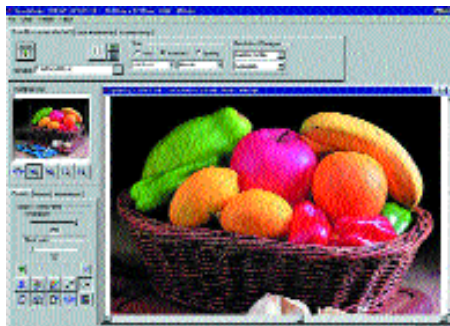
**Open scan aperture.** Colour CCD scanners are very sensitive optical devices. This can lead to problems when originals deposit dirt on a scan glass (at the camera focus), through which other scanners analyse the image. Acting directly on customer feedback, Colortrac developed a sophisticated glass-less media path to ensure high quality, 'streak' free, copies & scans that save end users time, money and reduce media waste. Any dust entering the open aperture, is outside the focus and not seen by the CCD cameras.

**Automatic camera alignment (AutoStitch).** Colortrac scanners have a fully automatic digital CCD alignment tool that enables users to perform camera to camera stitching as a simple software operation. There is no need to remove panels or to get your screwdriver out to align cameras. Once the alignment is set, ACTion Imaging's pivoted, three point mounted chassis and optics ensures that it stays SET, and stable, even when the scanner is moved or re-located within the premises.

**Ultra wide 40 MB/s SCSI interface** ensures that, given a fast enough PC and hard disk system, you can ACHIEVE the specified scanning speeds. Even if you don't need to with today's printer speed, your investment is protected with the performance to spare for tomorrow's PC and printer developments.

**Colour calibration.** All scanners use 36-bit Primary Point Digital data capture to analyse the image between automatically set 'dark' and 'light' levels. The colour data is sent to the application s/w in its raw form with no calibration scheme imposed that can limit the range of colours available from the scanner. Colour profiles are supplied with the scanners that enable colour management systems to process the data accurately and specifically for the rendering device selected, thus ensuring the best possible colour reproduction.

### SIMPLE USER INTERFACE



### ScanWorks Digital Scanning Software

Intuitive viewing & editing

► Works the way you like to work

Batch scanning with Presets

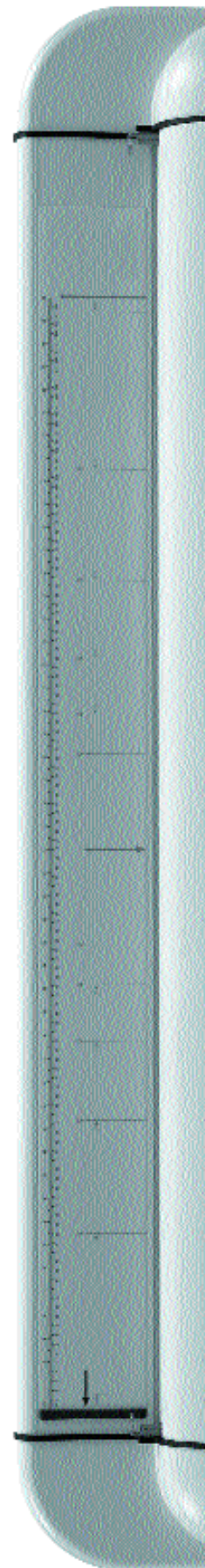
► Automatic setup & consistent quality

Scan once, edit many, archive

► Maximum workflow efficiency



[www.action-imaging.com](http://www.action-imaging.com)





# Colortrac

## Series

OUR BUSINESS IS YOUR IMAGE

### Colortrac 5480 / 4860 / 4280 / 3680 / 3640 - Technical Specifications

	5480	4860	4280	3680	3640
Scan Rates*	@200 dpi	@200 dpi	@200 dpi	@200 dpi	@200 dpi
~ colour	1.5"/s, 3.81cm/s	1.33"/s, 3.38cm/s	1.5"/s, 3.81cm/s	2.0"/s, 5.08cm/s	2.0"/s, 5.08cm/s
~ greyscale (R2GB)	1.5"/s, 3.81cm/s	1.33"/s, 3.38cm/s	1.5"/s, 3.81cm/s	2.0"/s, 5.08cm/s	2.0"/s, 5.08cm/s
~ greyscale (Greenscale)	4.5"/s, 11.43cm/s	4.0"/s, 10.16cm/s	4.5"/s, 11.43cm/s	6.0"/s, 15.24cm/s	6.0"/s, 15.24cm/s
~ black & white	4.5"/s, 11.43cm/s	4.0"/s, 10.16cm/s	4.5"/s, 11.43cm/s	6.0"/s, 15.24cm/s	6.0"/s, 15.24cm/s
Resolution					
~ optical	400 dpi	300 dpi	400 dpi	400 dpi	200 dpi
~ maximum	800 dpi	600 dpi	800 dpi	800 dpi	400 dpi
~ selectable in 1 dpi steps	50 to 400 dpi	50 to 300 dpi	50 to 400 dpi	50 to 400 dpi	50 to 200 dpi
~ interpolated	600, 800 dpi	450, 600 dpi	600, 800 dpi	600, 800 dpi	300, 400 dpi
Active Scan Area	54", 137.2cm x unlimited	48", 121.9cm x unlimited	42", 106.7cm x unlimited	36", 91.4cm x unlimited	36", 91.4cm x unlimited
Maximum Document Width	55", 139.7cm	55", 139.7cm	43", 109.2cm	43", 109.2cm	43", 109.2cm
Imaging Technology	3 cameras	2 cameras	3 cameras	2 cameras	1 camera
	All models use tri-linear CCD cameras of 7,500 pixels width Open Aperture, glass less image path for streak free scanning 36-bit Primary Point Digital Data Capture Fully automatic digital camera Stitching (Front/Back & Left/Right) 3 - point isolated chassis and optics mountings				
Scan Accuracy	+/- 0.1% plus a digitising rounding error of +/- 1 pixel				
Media Handling	Maximum media thickness 0.47", 12mm, adjustable in 1mm steps / Twin pinch rollers				
Document Type	Opaque or Translucent				
Illumination & Optics	Twin colour balanced Daylight Blue tubes, Apochromatic Lenses				
Colour & Image Processing	Gamma & Brightness, Automatic Light Level adjustment Black & White Point adjustment ICC colour device characterisation profile (sRGB) Downloadable Indexed Colour Paletting Image Sharpening Hardware DSP				
Monochrome Thresholding	2D Intelligent Adaptive Thresholding Hardware DSP				
Output Modes	24-bit RGB Colour / 256 & 16 Colour Optimised Palette 256 Level Greyscale (R2GB & Greenscale) / Black & White / Dithered Black & White				
Interface	Ultra Wide SCSI upto 40 MB/s				
Equipment	<b>5480 / 4860</b>		<b>4280 / 3680 / 3640</b>		
~ dimensions	39" H x 67" W x 20" D 99cm x 170cm x 51cm		39" H x 56" W x 20" D 99cm x 142cm x 51cm		
~ weight	143Lbs, 65Kgs		132Lbs, 60Kgs		
~ operating environment	59 ~ 86 F, 15 ~ 30 C, 15 ~ 85 % RH, non-condensing				
~ power requirements	90 ~ 250 VAC autosensing, 47 ~ 63 Hz, 250 VA				

**Colortrac Scanners Include** ScanWorks, TWAIN (PC & MAC)

#### Options

Predictor, CopyWorks, ReproWorks, Unix Software, Media Support Tray

#### Minimum System Requirements

Pentium 400MHz Processor / 128MB RAM / 10GB Disk Space / 24-bit Graphics Display Card  
SCSI Interface, 68 pin half pitch Dsub connector with thumbscrews  
Windows™ 95 / 98 / 2000 / NT4.0 service pack 3

\* The scan rate is proportional across the full range of resolutions supported by the scanner.  
However, the actual scan times will depend on the host system performance.  
Contact your local supplier for advice on the optimum system configuration for your application.



info@action-imaging.com www.action-imaging.com

UK Office • Kings Hall • St Ives Business Park • St Ives • Huntingdon • Cambridgeshire • PE27 4WY  
T +44 (0)1480 464618 • F +44 (0)1480 464620

US Office • 10499 Bradford Road • Littleton • Colorado • 80127 • USA  
T +1 (303) 973 6722 • F +1 (303) 973 7092



ACTION Imaging Solutions/Colortrac reserve the right to change or amend the specifications without notice. Colortrac is a trademark of Colortrac Ltd. All other trademarks are owned by their respective companies. Copyright © 2001 Colortrac Ltd. Images in the banner montage reproduced by kind permission of Simon Harris, Matthew Weaver, Nik Smart, Coventry School of Art and Design.