

# FS-C5100DN/C5200DN/C5300DN





# Contents

---

<b>1</b>	<b>Machine Parts</b>	
	Components at the Front of the Printer .....	1-2
	Components at the Left of the Printer .....	1-2
	Internal Components .....	1-3
	Components at the Rear of the Printer .....	1-3
	Operation Panel .....	1-4
<b>2</b>	<b>Printing Operation</b>	
	Changing Network Interface Parameters .....	2-2
	Printing a Network Interface Status Page .....	2-10
	Installing the Printer Driver .....	2-11
	Printing from Application Software .....	2-17
	Status Monitor .....	2-18
	Uninstalling Software (Windows PC) .....	2-22
<b>3</b>	<b>Maintenance</b>	
	General Information .....	3-2
	Toner Container Replacement .....	3-2
	Replacing the Waste Toner Box .....	3-6
	Cleaning the Printer .....	3-8
<b>4</b>	<b>Troubleshooting</b>	
	General Guidelines .....	4-2
	Print Quality Problems .....	4-3
	Error Messages .....	4-6
	Clearing Paper Jams .....	4-12
<b>5</b>	<b>Specifications</b>	

---

# Legal and Safety Information

---



**CAUTION** NO LIABILITY IS ASSUMED FOR ANY  
DAMAGE CAUSED BY IMPROPER INSTALLATION.

## Notice on Software

SOFTWARE USED WITH THIS PRINTER MUST SUPPORT THE PRINTER'S EMULATION MODE. The printer is factory-set to emulate the PCL.

## Notice

The information in this guide is subject to change without notification. Additional pages may be inserted in future editions. The user is asked to excuse any technical inaccuracies or typographical errors in the present edition.

No responsibility is assumed if accidents occur while the user is following the instructions in this guide. No responsibility is assumed for defects in the printer's firmware (contents of its read-only memory).

This guide, any copyrightable subject matter sold or provided with or in connection with the sale of the page printer, are protected by copyright. All rights are reserved. Copying or other reproduction of all or part of this guide, any copyrightable subject matter without the prior written consent of Kyocera Mita Corporation is prohibited. Any copies made of all or part of this guide, any copyrightable subject must contain the same copyright notice as the material from which the copying is done.

## Regarding Tradenames

PRESCRIBE is a registered trademark of Kyocera Corporation. KPDL is trademark of Kyocera Corporation.

Hewlett-Packard, PCL, and PJI are registered trademarks of Hewlett-Packard Company. Centronics is a trade name of Centronics Data Computer Inc. PostScript is a registered trademark of Adobe Systems Incorporated. Macintosh is a registered trademark of Apple Computer, Inc. Microsoft, Windows, and Windows NT are registered trademarks of Microsoft Corporation. PowerPC and Microdrive are trademarks of International Business Machines Corporation. CompactFlash is a trademark of SanDisk Corporation. ENERGY STAR is a U.S. registered mark. All other brand and product names are registered trademarks or trademarks of their respective companies.

This product was developed using the Tornado™ Real Time Operating System and Tools from Wind River Systems.

This product contains UFST™ and MicroType® from Monotype Imaging Inc.

---

## License Agreements

### Typeface Trademark Acknowledgement

All resident fonts in this printer are licensed from Monotype Imaging Inc.

Helvetica, Palatino and Times are registered trademarks of Linotype-Hell AG. ITC Avant Garde Gothic, ITC Bookman, ITC ZapfChancery and ITC Zapf Dingbats are registered trademarks of International Typeface Corporation.

### Monotype Imaging License Agreement

- 1 "Software" shall mean the digitally encoded, machine readable, scalable outline data as encoded in a special format as well as the UFST Software.
- 2 You agree to accept a non-exclusive license to use the Software to reproduce and display weights, styles and versions of letters, numerals, characters and symbols ("Typefaces") solely for your own customary business or personal purposes at the address stated on the registration card you return to Monotype Imaging. Under the terms of this License Agreement, you have the right to use the Fonts on up to three printers. If you need to have access to the fonts on more than three printers, you need to acquire a multi-user license agreement which can be obtained from Monotype Imaging. Monotype Imaging retains all rights, title and interest to the Software and Typefaces and no rights are granted to you other than a License to use the Software on the terms expressly set forth in this Agreement.
- 3 To protect proprietary rights of Monotype Imaging, you agree to maintain the Software and other proprietary information concerning the Typefaces in strict confidence and to establish reasonable procedures regulating access to and use of the Software and Typefaces.
- 4 You agree not to duplicate or copy the Software or Typefaces, except that you may make one backup copy. You agree that any such copy shall contain the same proprietary notices as those appearing on the original.
- 5 This License shall continue until the last use of the Software and Typefaces, unless sooner terminated. This License may be terminated by Monotype Imaging if you fail to comply with the terms of this License and such failure is not remedied within thirty (30) days after notice from Monotype Imaging. When this License expires or is terminated, you shall either return to Monotype Imaging or destroy all copies of the Software and Typefaces and documentation as requested.
- 6 You agree that you will not modify, alter, disassemble, decrypt, reverse engineer or decompile the Software.
- 7 Monotype Imaging warrants that for ninety (90) days after delivery, the Software will perform in accordance with Monotype Imaging-published specifications, and the diskette will be free from defects in material and workmanship. Monotype Imaging does not warrant that the Software is free from all bugs, errors and omissions.
- 8 THE PARTIES AGREE THAT ALL OTHER WARRANTIES, EXPRESSED OR IMPLIED, INCLUDING WARRANTIES OF FITNESS FOR A PARTICULAR PURPOSE AND MERCHANTABILITY, ARE EXCLUDED.

- 
- 9 Your exclusive remedy and the sole liability of Monotype Imaging in connection with the Software and Typefaces is repair or replacement of defective parts, upon their return to Monotype Imaging.
  - 10 IN NO EVENT WILL MONOTYPE IMAGING BE LIABLE FOR LOST PROFITS, LOST DATA, OR ANY OTHER INCIDENTAL OR CONSEQUENTIAL DAMAGES, OR ANY DAMAGES CAUSED BY ABUSE OR MISAPPLICATION OF THE SOFTWARE AND TYPEFACES.
  - 11 Massachusetts U.S.A. law governs this Agreement.
  - 12 You shall not sublicense, sell, lease, or otherwise transfer the Software and/or Typefaces without the prior written consent of Monotype Imaging.
  - 13 Use, duplication or disclosure by the Government is subject to restrictions as set forth in the Rights in Technical Data and Computer Software clause at FAR 252-227-7013, subdivision (b)(3)(ii) or subparagraph (c)(1)(ii), as appropriate. Further use, duplication or disclosure is subject to restrictions applicable to restricted rights software as set forth in FAR 52.227-19 (c)(2).
  - 14 YOU ACKNOWLEDGE THAT YOU HAVE READ THIS AGREEMENT, UNDERSTAND IT, AND AGREE TO BE BOUND BY ITS TERMS AND CONDITIONS. NEITHER PARTY SHALL BE BOUND BY ANY STATEMENT OR REPRESENTATION NOT CONTAINED IN THIS AGREEMENT. NO CHANGE IN THIS AGREEMENT IS EFFECTIVE UNLESS WRITTEN AND SIGNED BY PROPERLY AUTHORIZED REPRESENTATIVES OF EACH PARTY. BY OPENING THIS DISKETTE PACKAGE, YOU AGREE TO ACCEPT THE TERMS AND CONDITIONS OF THIS AGREEMENT.

## GPL

Firmware of this machine is using in part the GPL applied codes ([www.fsf.org/copyleft/gpl.html](http://www.fsf.org/copyleft/gpl.html)). Please access "<http://www.kyoceramita.com/gpl>" for more information on how to make GPL applied codes available.

## Open SSLeay License

**Copyright © 1998-2006 The OpenSSL Project. All rights reserved.**

Redistribution and use in source and binary forms, with or without modification, are permitted provided that the following conditions are met:

- 1 Redistributions of source code must retain the above copyright notice, this list of conditions and the following disclaimer.
- 2 Redistributions in binary form must reproduce the above copyright notice, this list of conditions and the following disclaimer in the documentation and/or other materials provided with the distribution.
- 3 All advertising materials mentioning features or use of this software must display the following acknowledgment:  
"This product includes software developed by the OpenSSL Project for use in the OpenSSL Toolkit. (<http://www.openssl.org/>)"
- 4 The names "OpenSSL Toolkit" and "OpenSSL Project" must not be used to endorse or promote products derived from this software without prior written permission.  
For written permission, please contact [openssl-core@openssl.org](mailto:openssl-core@openssl.org).
- 5 Products derived from this software may not be called "OpenSSL" nor may "OpenSSL" appear in their names without prior written permission of the OpenSSL Project.

- 
- 6 Redistributions of any form whatsoever must retain the following acknowledgment: "This product includes software developed by the OpenSSL Project for use in the OpenSSL Toolkit (<http://www.openssl.org/>)"

THIS SOFTWARE IS PROVIDED BY THE OpenSSL PROJECT "AS IS" AND ANY EXPRESSED OR IMPLIED WARRANTIES, INCLUDING, BUT NOT LIMITED TO, THE IMPLIED WARRANTIES OF MERCHANTABILITY AND FITNESS FOR A PARTICULAR PURPOSE ARE DISCLAIMED. IN NO EVENT SHALL THE OpenSSL PROJECT OR ITS CONTRIBUTORS BE LIABLE FOR ANY DIRECT, INDIRECT, INCIDENTAL, SPECIAL, EXEMPLARY, OR CONSEQUENTIAL DAMAGES (INCLUDING, BUT NOT LIMITED TO, PROCUREMENT OF SUBSTITUTE GOODS OR SERVICES; LOSS OF USE, DATA, OR PROFITS; OR BUSINESS INTERRUPTION) HOWEVER CAUSED AND ON ANY THEORY OF LIABILITY, WHETHER IN CONTRACT, STRICT LIABILITY, OR TORT (INCLUDING NEGLIGENCE OR OTHERWISE) ARISING IN ANY WAY OUT OF THE USE OF THIS SOFTWARE, EVEN IF ADVISED OF THE POSSIBILITY OF SUCH DAMAGE.

### Original SSLeay License

**Copyright © 1995-1998 Eric Young (eay@cryptsoft.com) All rights reserved.**

This package is an SSL implementation written by Eric Young (eay@cryptsoft.com). The implementation was written so as to conform with Netscapes SSL.

This library is free for commercial and non-commercial use as long as the following conditions are aheared to. The following conditions apply to all code found in this distribution, be it the RC4, RSA, lhash, DES, etc., code; not just the SSL code. The SSL documentation included with this distribution is covered by the same copyright terms except that the holder is Tim Hudson (tjh@cryptsoft.com).

Copyright remains Eric Young's, and as such any Copyright notices in the code are not to be removed.

If this package is used in a product, Eric Young should be given attribution as the author of the parts of the library used.

This can be in the form of a textual message at program startup or in documentation (online or textual) provided with the package.

Redistribution and use in source and binary forms, with or without modification, are permitted provided that the following conditions are met:

- 1 Redistributions of source code must retain the copyright notice, this list of conditions and the following disclaimer.
- 2 Redistributions in binary form must reproduce the above copyright notice, this list of conditions and the following disclaimer in the documentation and/or other materials provided with the distribution.
- 3 All advertising materials mentioning features or use of this software must display the following acknowledgement:  
"This product includes cryptographic software written by Eric Young (eay@cryptsoft.com)"  
The word 'cryptographic' can be left out if the rouines from the library being used are not cryptographic related :-).



- 
- 4 If you include any Windows specific code (or a derivative thereof) from the apps directory (application code) you must include an acknowledgement:  
"This product includes software written by Tim Hudson  
(tjh@cryptsoft.com)"

THIS SOFTWARE IS PROVIDED BY ERIC YOUNG "AS IS" AND ANY EXPRESS OR IMPLIED WARRANTIES, INCLUDING, BUT NOT LIMITED TO, THE IMPLIED WARRANTIES OF MERCHANTABILITY AND FITNESS FOR A PARTICULAR PURPOSE ARE DISCLAIMED. IN NO EVENT SHALL THE AUTHOR OR CONTRIBUTORS BE LIABLE FOR ANY DIRECT, INDIRECT, INCIDENTAL, SPECIAL, EXEMPLARY, OR CONSEQUENTIAL DAMAGES (INCLUDING, BUT NOT LIMITED TO, PROCUREMENT OF SUBSTITUTE GOODS OR SERVICES; LOSS OF USE, DATA, OR PROFITS; OR BUSINESS INTERRUPTION) HOWEVER CAUSED AND ON ANY THEORY OF LIABILITY, WHETHER IN CONTRACT, STRICT LIABILITY, OR TORT (INCLUDING NEGLIGENCE OR OTHERWISE) ARISING IN ANY WAY OUT OF THE USE OF THIS SOFTWARE, EVEN IF ADVISED OF THE POSSIBILITY OF SUCH DAMAGE.

The licence and distribution terms for any publically available version or derivative of this code cannot be changed. i.e. this code cannot simply be copied and put under another distribution licence [including the GNU Public Licence.]

---

## Compliance and Conformity

This equipment has been tested and found to comply with the limits for a Class B digital device, pursuant to Part 15 of the FCC Rules. These limits are designed to provide reasonable protection against harmful interference in a residential installation. This equipment generates, uses and can radiate radio frequency energy and, if not installed and used in accordance with the instructions, may cause harmful interference to radio communications. However, there is no guarantee that interference will not occur in a particular installation. If this equipment does cause harmful interference to radio or television reception, which can be determined by turning the equipment off and on, the user is encouraged to try to correct the interference by one or more of the following measures:

- Reorient or relocate the receiving antenna.
- Increase the separation between the equipment and receiver.
- Connect the equipment into an outlet on a circuit different from that to which the receiver is connected.
- Consult the dealer or an experienced radio/TV technician for help.
- The use of a non-shielded interface cable with the referenced device is prohibited.

**CAUTION** — The changes or modifications not expressly approved by the party responsible for compliance could void the user's authority to operate the equipment.

This device complies with Part 15 of FCC Rules and RSS-Gen of IC Rules.

Operation is subject to the following two conditions; (1) this device may not cause interference, and (2) this device must accept any interference, including interference that may cause undesired operation of the device.

\* The above warning is valid only in the United States of America.

## Interface connectors

**IMPORTANT** Be sure to power off the printer before connecting or disconnecting an interface cable. For protection against static electricity discharge to the printer's internal electronics through the interface connector(s), cover any interface connector that is not in use with the protective cap supplied.



**Note** Use shielded interface cables.

---

# Safety Information

---

## Laser Safety

This printer is certified as a Class 1 laser product under the U.S. Department of Health and Human Services (DHHS) Radiation Performance Standard according to Radiation Control for Health and Safety Act of 1968. This means that the printer does not produce hazardous laser radiation. Since radiation emitted inside the printer is completely confined within protective housings and external covers, the laser beam cannot escape from the printer during any phase of user operation.

## Laser Notice

This printer is certified in the U.S. to conform to the requirements of DHHS 21 CFR Subchapter for Class I (1) laser products, and elsewhere is certified as a Class I laser product conforming to the requirements of IEC 825.



**DANGER** CLASS 3B INVISIBLE LASER RADIATION  
WHEN OPEN. AVOID DIRECT EXPOSURE TO BEAM.



**CAUTION** Use of controls or adjustments or performance  
of procedures other than those specified herein may result  
in hazardous radiation exposure.

## Radio Frequency Transmitter

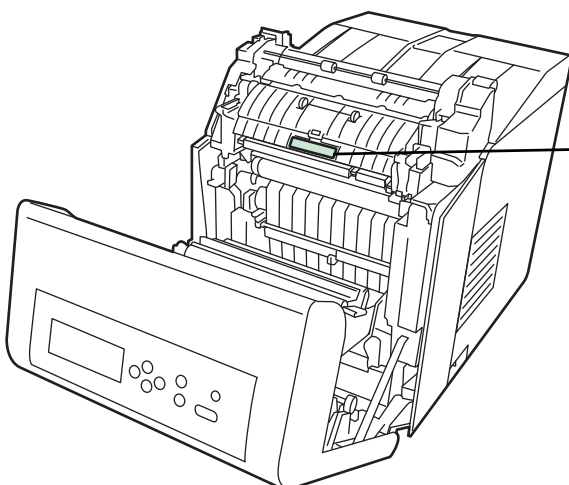
This machine contains a transmitter module. We, the manufacturer (Kyocera Mita Corporation) hereby declare that this equipment (page printer), model FS-C5100DN, FS-C5200DN and FS-C5300DN are in compliance with the essential requirements and other relevant provisions of Directive 1999/5/EC.

## Radio Tag Technology

In some countries, the radio tag technology used in this equipment to identify the toner container may be subject to authorization, and the use of this equipment may consequently be restricted.

## Cautionary Labels

The printer bears any of the following labels.



High temperature inside. Do not touch parts in this area, because there is a danger of getting burned.



### Label inside the printer (Laser radiation warning)



**DANGER** - CLASS 3B INVISIBLE LASER RADIATION WHEN OPEN. AVOID DIRECT EXPOSURE TO BEAM.  
**ATTENTION** - CLASSE 3B RAYONNEMENT LASER INVISIBLE EN CAS D'OUVERTURE. EXPOSITION DANGEREUSE AU FASCEAU.  
**VORSICHT** - KLASSE 3B UNSICHTBARE LASERSTRAHLUNG, WENN ABDECKUNG GEÖFFNET. NICHT DEM STRAHL AUSSETZEN.

**ATTENZIONE** - CLASSE 3B RADIAZIONE LASER INVISIBLE IN CASO DI APERTURA. EVITARE L'ESPOSIZIONE AL FASCIO.  
**PRECAUCION** - CLASSE 3B RADIAZIONE LASER INVISIBLE CUANDO SE ABRE. EVITAR EXPONERSE AL RAYO.  
**VARO!** - AVATTASSA OLET ALTTIINA LUOKAN 3B NÄKYMÄTTÖMÄLLE LASERSÄTEILYLLE. ÄLÄ KATSO SÄTEESEEN.

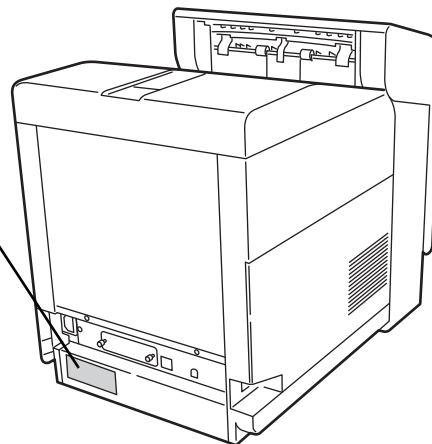
警告・该产品为3B类不可见激光产品。打开盖子后会有激光辐射。请避免光束照射。  
警告・該產品為3B類不可見激光產品。打開蓋子後會有激光輻射。請避免光束照射。  
취급 - CLASS 3B 불가시 레이저광선을 직접 보지마십시오.  
警告・ここを開くとクラス3B不可視レーザー光がでます。ビームを直接見たり、触れないでください。

### For Europe, Asia, and other countries

**FS-C5100DN** AC 220-240V 50/60Hz 4.7A  
KYOCERA MITA Corporation  
• Apparatet må ikke tas i bruk før strømkontakt.  
• Apparatet skall anslutas till jordat uttag.  
• Laite on liitettävä suojamaadoituskohtien avulla varustettuun pistorasiaan.  
• REMOVE POWER CORD BEFORE SERVICE.  
• VOR WARTUNG BITTE NETZSTECKER ZIEHEN.  
• POUR PRÉVENIR LES CHOCs ÉLECTRIQUES, COUPER L'ALIMENTATION AVANT DE MANIPULER.  
• DESCONEXIJE EL CORDÓN DE ALIMENTACIÓN ANTES DEL SERVICIO.  
• PRIMA DI ESEGUIRE RIPARAZIONI, STACCARRE IL CAVO DI ALIMENTAZIONE.  
DESIGNED IN JAPAN / ASSEMBLED IN CHINA

**FS-C5200DN** AC 220-240V 50/60Hz 4.7A  
KYOCERA MITA Corporation  
• Apparatet må ikke tas i bruk før strømkontakt.  
• Apparatet skall anslutas till jordat uttag.  
• Laite on liitettävä suojamaadoituskohtien avulla varustettuun pistorasiaan.  
• REMOVE POWER CORD BEFORE SERVICE.  
• VOR WARTUNG BITTE NETZSTECKER ZIEHEN.  
• POUR PRÉVENIR LES CHOCs ÉLECTRIQUES, COUPER L'ALIMENTATION AVANT DE MANIPULER.  
• DESCONEXIJE EL CORDÓN DE ALIMENTACIÓN ANTES DEL SERVICIO.  
• PRIMA DI ESEGUIRE RIPARAZIONI, STACCARRE IL CAVO DI ALIMENTAZIONE.  
DESIGNED IN JAPAN / ASSEMBLED IN CHINA

**FS-C5300DN** AC 220-240V 50/60Hz 4.7A  
KYOCERA MITA Corporation  
• Apparatet må ikke tas i bruk før strømkontakt.  
• Apparatet skall anslutas till jordat uttag.  
• Laite on liitettävä suojamaadoituskohtien avulla varustettuun pistorasiaan.  
• REMOVE POWER CORD BEFORE SERVICE.  
• VOR WARTUNG BITTE NETZSTECKER ZIEHEN.  
• POUR PRÉVENIR LES CHOCs ÉLECTRIQUES, COUPER L'ALIMENTATION AVANT DE MANIPULER.  
• DESCONEXIJE EL CORDÓN DE ALIMENTACIÓN ANTES DEL SERVICIO.  
• PRIMA DI ESEGUIRE RIPARAZIONI, STACCARRE IL CAVO DI ALIMENTAZIONE.  
DESIGNED IN JAPAN / ASSEMBLED IN CHINA



### For U.S.A. and Canada

**FS-C5100DN** AC 120V 60Hz 9.2A  
KYOCERA MITA Corporation  
TAMAKI PLANT  
704-19 NOJINO, TAMAKI-TOWN WATARAI-COUNTY, MIE-PREF. JAPAN  
MANUFACTURED: C11  
Complies with FDA radiation performance standards 21 CFR Subchapter J.  
This device complies with Part 15 of the FCC Rules. Operation is subject to the following two conditions:  
(1) This device may not cause harmful interference, and (2) this device must accept any interference received, including interference that may cause undesired operation.  
This Class B digital apparatus complies with Canadian ICES-003.  
Cet appareil numérique de la classe B est conforme à la norme NMB-003 du Canada.  
• REMOVE POWER CORD BEFORE SERVICE AND FUSE REPLACEMENT.  
• POUR PRÉVENIR LES CHOCs ÉLECTRIQUES, COUPER L'ALIMENTATION AVANT DE REMPLACER LE FUSIBLE.  
DESIGNED IN JAPAN / ASSEMBLED IN CHINA

**FS-C5200DN** AC 120V 60Hz 9.2A  
KYOCERA MITA Corporation  
TAMAKI PLANT  
704-19 NOJINO, TAMAKI-TOWN WATARAI-COUNTY, MIE-PREF. JAPAN  
MANUFACTURED: C11  
Complies with FDA radiation performance standards 21 CFR Subchapter J.  
This device complies with Part 15 of the FCC Rules. Operation is subject to the following two conditions:  
(1) This device may not cause harmful interference, and (2) this device must accept any interference received, including interference that may cause undesired operation.  
This Class B digital apparatus complies with Canadian ICES-003.  
Cet appareil numérique de la classe B est conforme à la norme NMB-003 du Canada.  
• REMOVE POWER CORD BEFORE SERVICE AND FUSE REPLACEMENT.  
• POUR PRÉVENIR LES CHOCs ÉLECTRIQUES, COUPER L'ALIMENTATION AVANT DE REMPLACER LE FUSIBLE.  
DESIGNED IN JAPAN / ASSEMBLED IN CHINA

**FS-C5300DN** AC 120V 60Hz 9.2A  
KYOCERA MITA Corporation  
TAMAKI PLANT  
704-19 NOJINO, TAMAKI-TOWN WATARAI-COUNTY, MIE-PREF. JAPAN  
MANUFACTURED: C11  
Complies with FDA radiation performance standards 21 CFR Subchapter J.  
This device complies with Part 15 of the FCC Rules. Operation is subject to the following two conditions:  
(1) This device may not cause harmful interference, and (2) this device must accept any interference received, including interference that may cause undesired operation.  
This Class B digital apparatus complies with Canadian ICES-003.  
Cet appareil numérique de la classe B est conforme à la norme NMB-003 du Canada.  
• REMOVE POWER CORD BEFORE SERVICE AND FUSE REPLACEMENT.  
• POUR PRÉVENIR LES CHOCs ÉLECTRIQUES, COUPER L'ALIMENTATION AVANT DE REMPLACER LE FUSIBLE.  
DESIGNED IN JAPAN / ASSEMBLED IN CHINA

---

## CDRH Regulations

The Center for Devices and Radiological Health (CDRH) of the U.S. Food and Drug Administration implemented regulations for laser products on August 2, 1976. These regulations apply to laser products manufactured after August 1, 1976. Compliance is mandatory for products marketed in the United States. A label indicating compliance with the CDRH regulations must be attached to laser products marketed in the United States.

## Ozone concentration

The printers generate ozone gas (O<sub>3</sub>) which may concentrate in the place of installation and cause an unpleasant smell. To minimize the concentration of ozone gas to less than 0.1 ppm, we recommend you not to install the printer in a confined area where ventilation is blocked.

## Safety Instructions Regarding the Disconnection of Power

**Caution:** The power plug is the main isolation device! Other switches on the equipment are only functional switches and are not suitable for isolating the equipment from the power source.

**VORSICHT:** Der Netzstecker ist die Hauptisoliervorrichtung! Die anderen Schalter auf dem Gerät sind nur Funktionsschalter und können nicht verwendet werden, um den Stromfluß im Gerät zu unterbrechen.



## DECLARATION OF CONFORMITY TO

**2004/108/EC, 2006/95/EEC, 93/68/EEC and 1999/5/EC**

We declare under our sole responsibility that the product to which this declaration relates is in conformity with the following specifications.

EN55024  
EN55022 Class B  
EN61000-3-2  
EN61000-3-3  
EN60950-1  
EN60825-1  
EN300 330-1  
EN300 330-2

---

### **Canadian Department of Communications Compliance Statement**

This Class B digital apparatus complies with Canadian ICES-003.

### **Avis de conformité aux normes du ministère des Communications du Canada**

Cet appareil numérique de la classe B est conforme à la norme NMB-003 du Canada.

### **EN ISO 7779**

Maschinenlärminformations-Verordnung 3. GPSGV, 06.01.2004: Der höchste Schalldruckpegel beträgt 70 dB (A) oder weniger gemäß EN ISO 7779.

### **Disclaimer**

Kyocera Mita will not be liable to customers or any other person or entity for any loss or damage caused or alleged to be caused directly or indirectly by equipment sold or furnished by us, including but not limited to, any interruption of service, loss of business or anticipatory profits, or consequential damages resulting from the use or operation of the equipment or software.

---

## Energy Saving Control Function

The device comes equipped with a **Sleep Mode** where printer functions remain in a waiting state but power consumption is still reduced to a minimum when there is no activity with the device within a set amount of time.

### Sleep

The device automatically enters Sleep when 30 minutes have passed since the device was last used. The amount of time of no activity that must pass before Sleep is activated may be lengthened. For more information, refer to *Sleep Timer (Sleep timer timeout setting)* section of the *Advanced Operation Guide*.

### Automatic 2-Sided Print Function

This device includes 2-sided printing as a standard function. For example, by printing two 1-sided originals onto a single sheet of paper as a 2-sided print, it is possible to lower the amount of paper used. For more information, refer to *Duplex (Duplex Printing)* section of the *Advanced Operation Guide*.

### Paper Recycling

This device supports the recycled paper which reduces the load on the environment. Your sales or service representative can provide information about recommended paper types.

### Energy Star (ENERGY STAR®) Program

We have determined as a participating company in the International Energy Star Program that this product is compliant with the standards laid out in the International Energy Star Program.



## Installation Precautions

### Environment

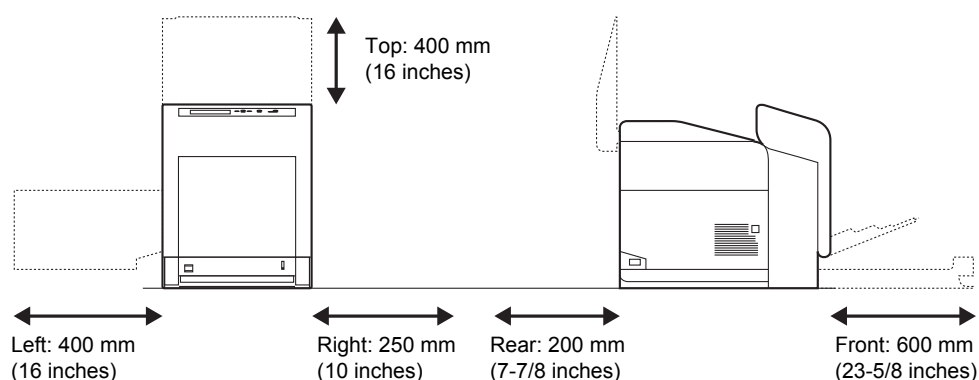


**CAUTION** Avoid placing the printer on or in locations which are unstable or not level. Such locations may cause the printer to fall. This type of situation presents a danger of personal injury or damage to the printer.

Avoid locations with humidity or dust and dirt. If dust or dirt becomes attached to the power plug, clean the plug to avoid the danger of fire or electrical shock.

Avoid locations near radiators, heaters, or other heat sources, or locations near flammable items, to avoid the danger of fire.

To keep the printer cool and facilitate changing of parts and maintenance, allow access space as shown below. Leave adequate space, especially around the side cover, to allow air to be properly ventilated from the printer.



### Other Precautions

Adverse environmental conditions may affect the safe operation and performance of the printer. Install in an air-conditioned room (recommended room temperature: around 23 °C, humidity: around 60 % RH) and avoid the following locations when selecting a site for the printer.

- Avoid locations near a window or with exposure to direct sunlight.
- Avoid locations with vibrations.
- Avoid locations with drastic temperature fluctuations.
- Avoid locations with direct exposure to hot or cold air.
- Avoid poorly ventilated locations.

If the flooring is of a soft material, it may be damaged by the casters when this product is moved after installation.



---

## Power Supply/Grounding the Printer



**WARNING** Do not use a power supply with a voltage other than that specified. Avoid multiple connections in the same outlet. These types of situations present a danger of fire or electrical shock.

Plug the power cord securely into the outlet. If metallic objects come in contact with the prongs on the plug, it may cause a fire or electric shock.

Always connect the printer to an outlet with a ground connection to avoid the danger of fire or electrical shock in case of an electric short. If an earth connection is not possible, contact your service representative.

## Other Precautions

Connect the power plug to the closest outlet possible to the printer.

## Handling of Plastic Bags



**WARNING** Keep the plastic bags that are used with the printer away from children. The plastic may cling to their nose and mouth causing suffocation.

---

## Precautions for Use

### Cautions when Using the Printer

- **Do not** place metallic objects or containers with water (flower vases, flower pots, cups, etc.) on or near the printer. This type of situation presents a danger of fire or electrical shock should they fall inside.
- **Do not** remove any of the covers from the printer as there is a danger of electrical shock from high voltage parts inside the printer.
- **Do not** damage, break or attempt to repair the power cord. Do not place heavy objects on the cord, pull it, bend it unnecessarily or cause any other type of damage. These types of situations present a danger of fire or electrical shock.
- **Never** attempt to repair or disassemble the printer or its parts as there is a danger of fire, electrical shock or damage to the laser. If the laser beam escapes, there is a danger of it causing blindness.
- If the printer becomes excessively hot, smoke appears from the printer, there is an odd smell, or any other abnormal situation occurs, there is a danger of fire or electrical shock. Turn the power switch OFF (○) immediately, remove the power plug from the outlet and contact your service representative.
- If anything harmful (paper clips, water, other fluids, etc.) falls into the printer, turn the power switch OFF (○) immediately. Next, remove the power plug from the outlet to avoid the danger of fire or electrical shock. Then contact your service representative.
- **Do not** remove or connect the power plug with wet hands, as there is a danger of electrical shock.
- **Always** contact your service representative for maintenance or repair of internal parts.
- **Do not** pull the power cord when removing it from the outlet. If the power cord is pulled, the wires may become broken and there is a danger of fire or electrical shock. (Always grasp the power plug when removing the power cord from the outlet.)
- **Always** remove the power plug from the outlet when moving the printer. If the power cord is damaged, there is a danger of fire or electrical shock.
- If the printer will not be used for a short period of time (overnight, etc.), turn the power switch OFF (○). If it will not be used for an extended period of time (vacations, etc.), remove the power plug from the outlet for safety purposes during the time the printer is not in use.
- For safety purposes, **always** remove the power plug from the outlet when performing cleaning operations.
- If dust accumulates within the printer, there is a danger of fire or other trouble. It is therefore recommended that you consult with your service representative in regard to cleaning of internal parts. This is particularly effective if accomplished prior to seasons of high humidity. Consult with your service representative in regard to the cost of cleaning the internal parts of the printer.

---

## Other Precautions

- **Do not** place heavy objects on the printer or cause other damage to the printer.
- **Do not** open the top/left/rear cover, turn off the main switch, or pull out the power plug during printing.
- During printing, some ozone is released, but the amount does not cause any ill effect to one's health. If, however, the printer is used over a long period of time in a poorly ventilated room or when printing an extremely large number of copies, the smell may become unpleasant. To maintain the appropriate environment for print work, it is suggested that the room be properly ventilated.
- **Do not** touch electrical parts, such as connectors or printed circuit boards. They could be damaged by static electricity.
- **Do not** attempt to perform any operations not explained in this handbook.
- If the printer will not be used for an extended period of time, remove the paper from the cassette, return it to its original package and reseal it.



**CAUTION** Use of controls or adjustments or performance of procedures other than those specified herein may result in hazardous radiation exposure.

## Cautions for Toner Handling

- **Do not** incinerate toner and toner containers. Dangerous sparks may cause burn.
- **Never** open the toner container.
- **Do not** inhale the toner.
- If you get toner on your hands, **do not** rub your eyes or touch your mouth. Wash the toner from your hands.
- For the disposal of the old toner container, consult your service technician or dispose of the toner or toner containers in accordance with Federal, State and Local rules and regulations.

---

## About the Operation Guide

This Operation Guide has the following chapters:

### *Chapter 1 - Machine Parts*

This chapter explains the names of parts.

### *Chapter 2 - Printing Operation*

This chapter explains how to print from your workstation.

### *Chapter 3 - Maintenance*

This chapter explains how to replace the toner container and how to care for your printer.

### *Chapter 4 - Troubleshooting*


This chapter explains how to handle printer problems that may occur, such as paper jams.

### *Chapter 5 - Specifications*

This chapter lists the printer's specifications.

## Conventions

This manual uses the following conventions.

Convention	Description	Example
<b>Italic Typeface</b>	Used to emphasize a key word, phrase or reference to additional information.	To replace the toner container, refer to <i>Toner Container Replacement on page 3-2</i> .
<b>Bold</b>	Used to denote buttons on the software.	To start printing, click <b>OK</b> .
<b>Bracket Bold</b>	Used to denote operation panel keys.	Press <b>[GO]</b> to resume printing.
<b>Note</b>	Used to provide additional or useful information about a function or feature.	 <b>Note</b> Check with your network administrator for the network address settings.
<b>Important</b>	Used to provide important information.	<b>IMPORTANT</b> Ensure paper is not folded, curled, or damaged.
<b>Caution</b>	Cautions are statements that suggest <i>mechanical</i> damage as a result of an action.	<b>CAUTION</b> Do not pull the cassette out when holding the front of the machine.
<b>Warning</b>	Used to alert users to the possibility of <i>personal</i> injury.	<b>WARNING</b> High voltage is present in the charger section.

# 1 Machine Parts

---

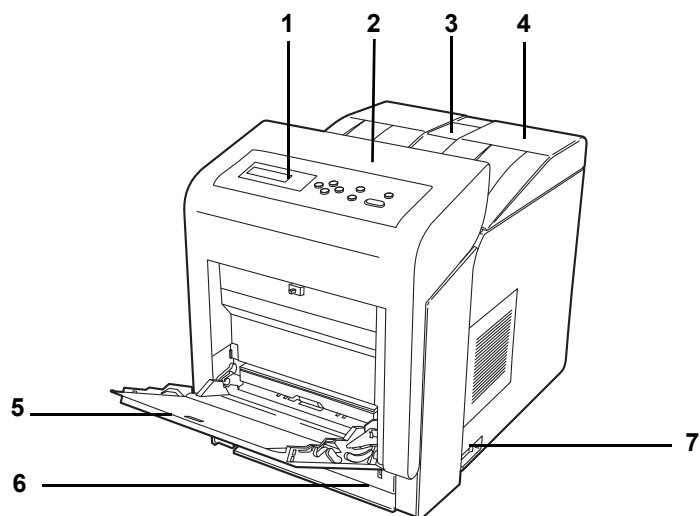
This chapter provides explanations and illustrations for you to determine the parts and their functions. Try to be familiar with the names and functions of these parts for correct use and optimal performance.

This chapter contains explanations on the following topics:

<b>Components at the Front of the Printer</b>	<b>1-2</b>
<b>Components at the Left of the Printer</b>	<b>1-2</b>
<b>Internal Components</b>	<b>1-3</b>
<b>Components at the Rear of the Printer</b>	<b>1-3</b>
<b>Operation Panel</b>	<b>1-4</b>

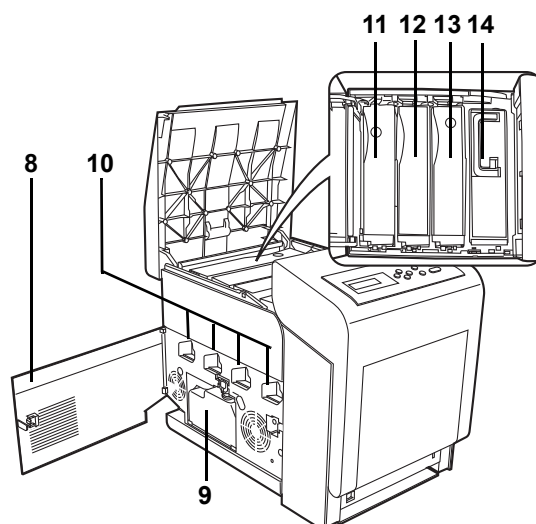
---

## Components at the Front of the Printer



- 1 Operation Panel
- 2 Front Cover
- 3 Paper Stopper
- 4 Top Cover (Top Tray)
- 5 MP (Multi-Purpose) Tray
- 6 Paper Cassette
- 7 Power Switch

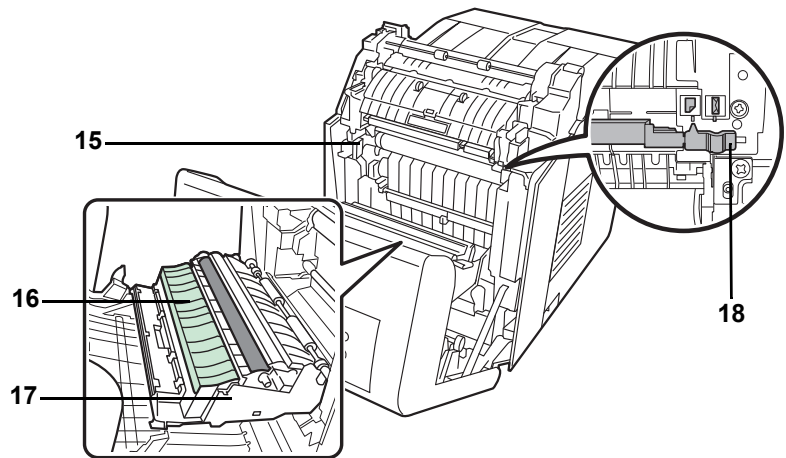
## Components at the Left of the Printer



- 8 Left Cover
- 9 Waste Toner Box
- 10 Main Charger Units on the Drum Units
- 11 Magenta Toner Container (M)
- 12 Cyan Toner Container (C)
- 13 Yellow Toner Container (Y)
- 14 Black Toner Container (K)

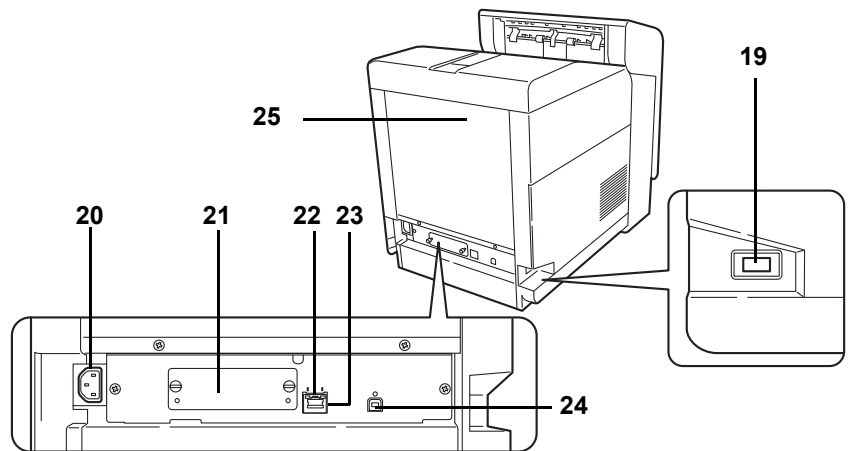
---

## Internal Components



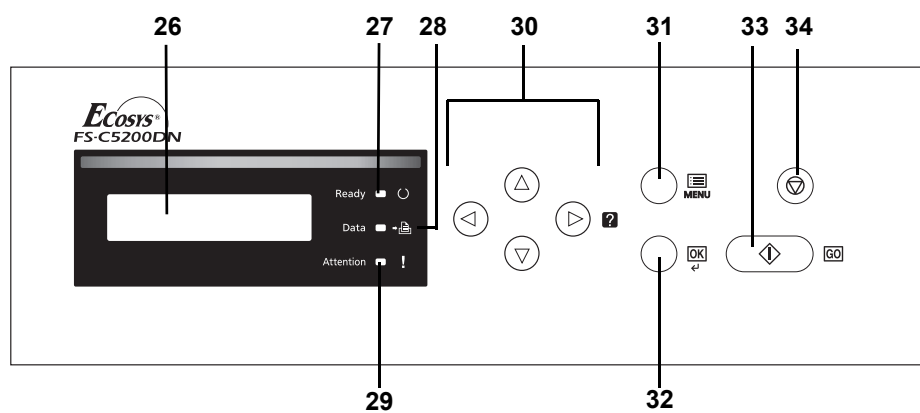
- 15 Paper Transfer Unit**
- 16 Paper Ramp**
- 17 Duplex Unit**
- 18 Envelope Switch**

## Components at the Rear of the Printer



- 19 USB Memory Slot**
- 20 Power Cord Connector**
- 21 Option Interface Slot**
- 22 Network Indicators**
- 23 Network Interface Connector**
- 24 USB Interface Connector**
- 25 Rear Cover**

## Operation Panel



- 26 Message Display
- 27 Ready Indicator
- 28 Data Indicator
- 29 Attention Indicator
- 30 Arrow Keys
- 31 [MENU] Key
- 32 [OK] Key
- 33 [GO] Key
- 34 [Cancel] Key



## 2 Printing Operation

---

This chapter contains explanations on the following topics:

<b>Changing Network Interface Parameters</b>	<b>2-2</b>
<b>Printing a Network Interface Status Page</b>	<b>2-10</b>
<b>Installing the Printer Driver</b>	<b>2-11</b>
<b>Printing from Application Software</b>	<b>2-17</b>

---

## Changing Network Interface Parameters

This printer supports TCP/IP, TCP/IP (IPv6), NetWare, AppleTalk, IPP, SSL Server, IPSec protocols and Security Level. (For details refer to *Advanced Operation Guide*.)



**Note** After all network related settings have been done, turn the machine OFF and ON again. This is mandatory to make the settings effective!

### TCP/IP, TCP/IP (IPv6) settings

**1** Press [MENU].

**2** Press  $\Delta$  or  $\nabla$  repeatedly until `Network >` appears.

```
Network >
```

**3** Press  $\triangleright$ . Each time you press  $\Delta$  or  $\nabla$ , the selection changes. Refer to the explanations below when specifying the settings.

Set this item to `On` when you connect to a network using TCP/IP. Submenu has items including DHCP, IP Address, Subnet Mask, Gateway and Bonjour.

```
>TCP/IP >  
Off
```



Set this item to `On` when you connect to a network using TCP/IP (IPv6). Submenu has items including RA (Stateless) and DHCPv6.

```
>TCP/IP (IPv6) >  
Off
```

## TCP/IP

This section describes how to enable the TCP/IP protocol.

```
>TCP/IP      >
  On
```

- 1** If TCP/IP is set to Off, use  $\Delta$  or  $\nabla$  to select On and press [OK].

```
>>DHCP
  Off
```

- 2** Press  $\triangleright$ . Each time you press  $\Delta$  or  $\nabla$ , the selection changes.

$\downarrow$   $\uparrow$

```
>>IP Address
  000.000.000.000
```

$\downarrow$   $\uparrow$

```
>>Subnet Mask
  000.000.000.000
```

$\downarrow$   $\uparrow$

```
>>Gateway
  000.000.000.000
```

$\downarrow$   $\uparrow$

```
>>Bonjour
  Off
```

$\downarrow$   $\uparrow$

```
>>Subnet Mask
  000.000.000.000
```

- 3** Display the item you want to set and press [OK]. A blinking question mark (?) appears while you are setting DHCP and Bonjour. A blinking cursor ( ) appears while you are setting IP Address, Subnet Mask and Gateway.

- 4** Press  $\Delta$  or  $\nabla$  to select On or Off as the setting for DHCP and Bonjour.

For the IP Address, Subnet Mask and Gateway settings, press  $\Delta$  or  $\nabla$  to move the blinking cursor to the number you want to change (000 to 255). Use  $\triangleleft$  and  $\triangleright$  to move the cursor right and left.



**Note** Check with your network administrator for the network address settings.

- 5** Press [OK].

- 6** Press [MENU]. The display returns to Ready.

### TCP/IP (IPv6)

This section describes how to enable the TCP/IP (IPv6) protocol.

```
>TCP/IP (IPv6) >
  On
```

- 1 If **TCP/IP (IPv6)** is set to **Off**, use  $\Delta$  or  $\nabla$  to select **On** and press **[OK]**.

```
>>RA (Stateless)
  Off
```

- 2 Press  $\triangleright$ . Each time you press  $\Delta$  or  $\nabla$ , the selection changes.

$\downarrow$   $\uparrow$

```
>>DHCPv6
  Off
```

```
>>RA (Stateless)
?Off
```

- 3 Display the item you want to set and press **[OK]**. A blinking question mark (?) appears while you are setting **RA (Stateless)** and **DHCPv6**.

$\downarrow$   $\uparrow$

```
>>DHCPv6
?Off
```

- 4 Press  $\Delta$  or  $\nabla$  to select **On** or **Off** as the setting for **RA (Stateless)** and **DHCPv6**.



**Note** Check with your network administrator for the network address settings.

- 5 Press **[OK]**.

- 6 Press **[MENU]**. The display returns to **Ready**.

### NetWare, AppleTalk, IPP, SSL Server, IPSec and Security Level settings

- 1 Press **[MENU]**.

```
Security >
```

- 2 Press  $\Delta$  or  $\nabla$  repeatedly until **Security >** appears.

- 3 Press  $\triangleright$ . Each time you press  $\triangle$  or  $\nabla$ , the selection changes. Refer to the explanations below when specifying the settings.

ID  
—



Password  
—



>NetWare >  
On



>AppleTalk  
On



>IPP  
Off



>SSL Server >  
Off



>IPSec  
Off

If you are using NetWare, AppleTalk, IPP, SSL Server or IPSec to connect to a network, you must enter an administrator ID. By default, the administrator ID is the numeric part of your printer's model name. If you use FS-C5300DN, enter "5300".

If you are using NetWare, AppleTalk, IPP, SSL Server or IPSec to connect to a network, you must enter an administrator password. By default, the administrator password is the numeric part of your printer's model name. If you use FS-C5300DN, enter "5300".

Set this item to On when you connect to a network using NetWare. In submenu, frame mode can be selected from Auto, 802.3, Ethernet-II, SNAP and 802.2.

AppleTalk must be activated (On) for networking with Macintosh computers.

Set this item to On when you connect to a network using IPP.

Set this item to On when you connect to a network using SSL Server. Submenu has items including DES, 3DES, AES, IPP over SSL and HTTPS.

Set this item to On when you connect to a network using IPSec.

Continued on next page.



```
>Security Level
  High
```

Set the Security Level to High.

### NetWare

This section explains the procedure for enabling NetWare.

```
>NetWare      >
  On
```

**1** Enter the administrator ID and password. Then, if NetWare is set to Off, use  $\Delta$  or  $\nabla$  to select On and press [OK].

```
>>Frame Type
  Auto
```

**2** Press  $\triangleright$ .

```
>>Frame Type
?Auto
```

**3** Press [OK]. A blinking question mark (?) appears. Each time you press  $\Delta$  or  $\nabla$ , the selection changes.



```
>>Frame Type
?802.3
```



```
>>Frame Type
?Ethernet-II
```



```
>>Frame Type
?SNAP
```



```
>>Frame Type
?802.2
```

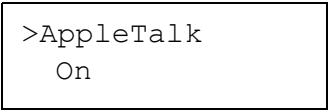
**4** Display the item you want to set and press [OK].

**5** Press [MENU]. The display returns to Ready.

---

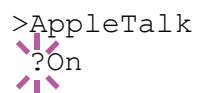
## AppleTalk

This section explains the procedure for enabling AppleTalk.



>AppleTalk  
On

- 1 Enter the administrator ID and password. Then, if AppleTalk is set to Off, use  $\triangle$  or  $\nabla$  to select On.



>AppleTalk  
?On

- 2 Press [OK]. A blinking question mark (?) appears.

- 3 Press [OK] again.

- 4 Press [MENU]. The display returns to Ready.

## IPP

This section explains the procedure for enabling IPP.



>IPP  
On

- 1 Enter the administrator ID and password. Then, if IPP is set to Off, use  $\triangle$  or  $\nabla$  to select On.



>IPP  
?On

- 2 Press [OK]. A blinking question mark (?) appears.

- 3 Press [OK] again.

- 4 Press [MENU]. The display returns to Ready.

## SSL Server

This section explains the procedure for enabling SSL Server.

```
>SSL Server >
  On
```

- 1 Enter the administrator ID and password. Then, if `SSL Server` is set to `Off`, use  $\Delta$  or  $\nabla$  to select `On` and press **[OK]**.

```
>>DES
  Off
```

- 2 Press  $\triangleright$ . Each time you press  $\Delta$  or  $\nabla$ , the selection changes.

$\downarrow$   $\uparrow$

```
>>3DES
  Off
```

$\downarrow$   $\uparrow$

```
>>AES
  Off
```

$\downarrow$   $\uparrow$

```
>>IPP over SSL
  Off
```

$\downarrow$   $\uparrow$

```
>>HTTPS
  Off
```

```
>>DES
?Off
```

- 3 Display the item you want to set and press **[OK]**. A blinking question mark (?) appears.

- 4 Select `On` or `Off` using  $\Delta$  or  $\nabla$ .

- 5 Press **[OK]**.

- 6 Press **[MENU]**. The display returns to `Ready`.

## IPSec

This section explains the procedure for enabling IPSec.

```
>IPSec
  On
```

- 1 Enter the administrator ID and password. Then, if `IPSec` is set to `Off`, use  $\Delta$  or  $\nabla$  to select `On`.

```
>IPSec
?On
```

- 2 Press **[OK]**. A blinking question mark (?) appears.

- 3 Press **[OK]** again.

- 4 Press **[Menu]**. The display returns to `Ready`.



---

### Security Level

>Security Level High
-------------------------

Security Level is primarily a menu used by service personnel for maintenance work. There is no need for customers to use this menu.

---

## Printing a Network Interface Status Page

You can print out a status page for the network interface. The network status page shows the network addresses, and other information under various network protocols about the network interface.

### Adjust/Maintenance

Adjust/Maintenance is used to adjust the print quality and to carry out printer maintenance.

The options available in Adjust/Maintenance are as follows:

- Color Calibration
- Registration Normal
- Registration Details
- Restart Printer
- Service

**IMPORTANT** *Service* is primarily a menu used by service personnel for maintenance work. There is no need for customers to use this menu.

**1** Press **[MENU]**.

**2** Press  $\triangle$  or  $\nabla$  repeatedly until `Adjust/Maintenance >` appears.

`Adjust/  
Maintenance >`

**3** Press  $\triangleright$  while `Adjust/Maintenance >` is displayed.

**4** Press  $\triangle$  or  $\nabla$  repeatedly until `>Service >` appears.

**5** Press  $\triangleright$ .

**6** Press  $\triangle$  or  $\nabla$  repeatedly until `>>Print Network Status Page` appears.

`>>Print Network  
Status Page ?`

**7** Press **[OK]**. A question mark (?) appears.

**8** Press **[OK]**. `Processing` appears and a status page is printed out.

**9** When printing ends, the display returns to `Ready`.


---

## Installing the Printer Driver

Ensure the printer is plugged in and connected to the PC before installing the printer driver from the CD-ROM.

## Installing the Software in Windows

If you are connecting this printer to a Windows PC, follow the next steps to install the printer driver. The example shows you how to connect your printer to a Windows Vista PC.

 **Note** In Windows Vista, Windows XP and Windows 2000, you must be logged on with administrator privileges.


You can use either Express Mode or Custom Mode to install the software. Express Mode automatically detects connected printers and installs the required software. Use Custom Mode if you want to specify the printer port and select the software to be installed.

- 1 Turn on the computer and start up Windows.

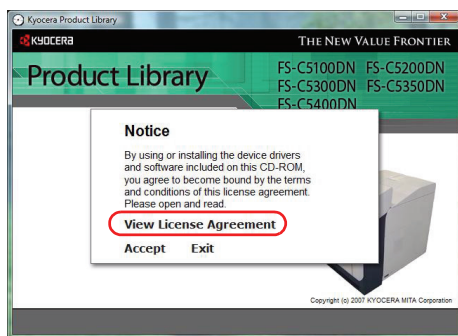
If the Welcome to the Found New Hardware Wizard dialog box displays, select **Cancel**.

- 2 Insert the CD-ROM supplied with the printer into the optical drive of the PC. In Windows Vista, the user account management window appears. Click **Allow**.

The installation program launches.

 **Note** If the software install wizard does not launch automatically, open the CD-ROM window in Windows Explorer and double-click **Setup.exe**.

- 3 Click **View License Agreement** and read the License Agreement. Click **Accept**.

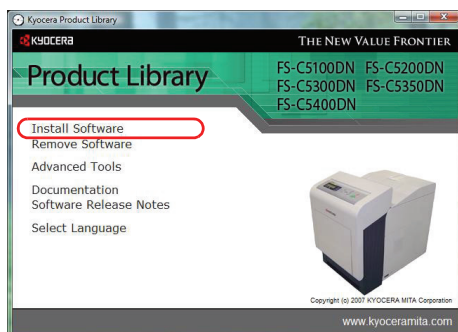


- 4 Click **Install software**.

The software install wizard starts up. Click **Next**.

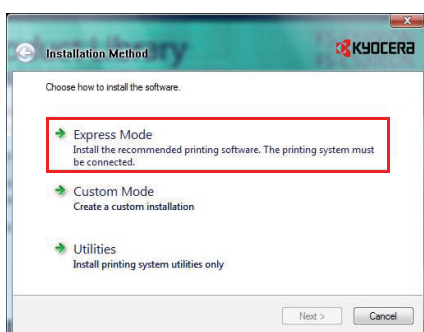
From this point, the procedure differs depending on your version of Windows and your connection method. Proceed to the correct procedure for your connection type.

- Express Mode
- Custom Mode



## Express Mode

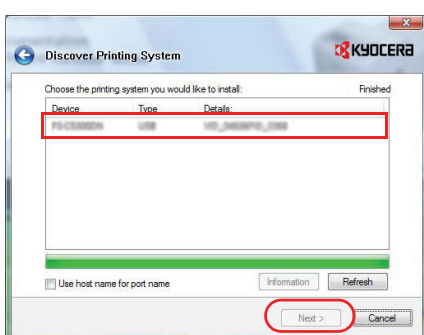
In Express Mode, the installer automatically detects the printer when it is turned on. Use Express Mode for standard connection methods.



- 1 In the installation method selection window, select **Express Mode**. The print system detection window appears and the installer detects the connected printers. If the installer does not detect a print system, check that the print system is connected via USB or a network and that it is turned on. Then return to the print system detection window.



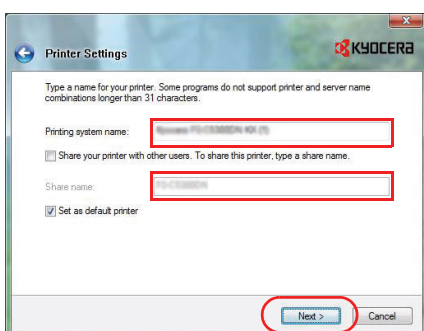
**Note** While the information shown in Windows Vista and Windows XP installation dialog boxes differs slightly, the installation procedure is the same.



- 2 Select the print system to be installed and click **Next**.



**Note** If the Found New Hardware Wizard appears, click **Cancel**. If a hardware installation warning message appear, click **Continue**.



- 3 You can customize the print system name in the installation settings window. This will be the name displayed in the Printer window and in the printer lists displayed in applications. Specify whether to share the print system name or set the print system as an existing printer and then click **Next**.

**IMPORTANT** Step 3 only appears if the print system is connected via a network. It does not appear if the print system is connected via a USB.

- 4 A window appears in which you can check the settings. Check the settings carefully and then click **Install**.



**Note** If the Windows security window appears, click **Install this driver software**.

- 5 A message appears saying that the printer has been installed successfully. Click **Exit** to exit the printer installation wizard and return the CD-ROM main menu.

If the device setup dialog box appears after you click **Exit**, you can specify the settings for items such as optional features installed in the print system. You can also specify the device settings after you exit the installation. For details, refer to *Device Settings* in the printer driver operation manual on the CD-ROM.

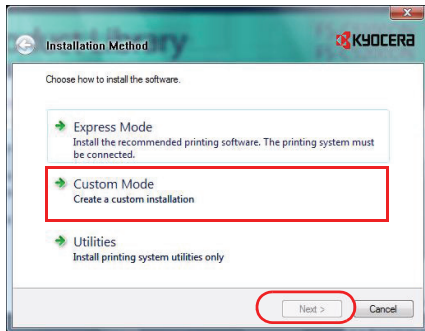
This completes the printer driver installation procedure. Follow the on-screen instructions to restart the system, if required.

## Custom Mode

Use Custom Mode if you want to specify the printer port and select the software to be installed.

For example, if you do not want fonts installed on your computer to be replaced, select **Custom Mode** and deselect the **Fonts** checkbox in the installation window.

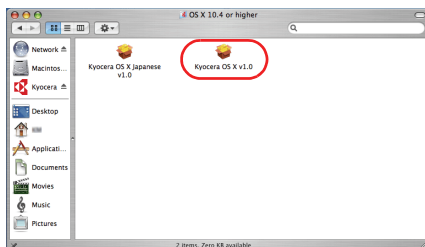
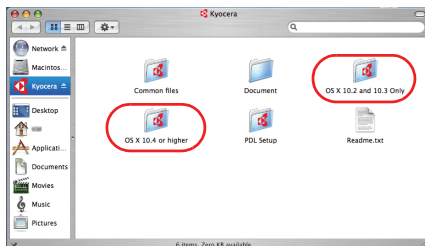
- 1 Select **Custom Mode**.



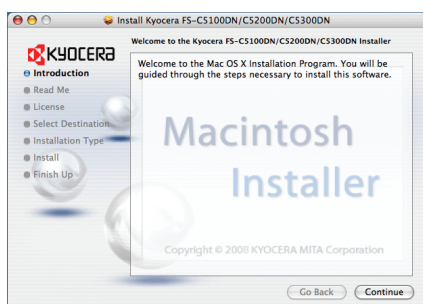
- 2 Following the instructions in the install wizard window, select the software packages to be installed and specify the port, etc.  
For details, refer to *Custom Installation* in the printer driver operation manual on the CD-ROM.

## Installation on a Macintosh

- 1 Turn on the printer and the Macintosh.
- 2 Insert the included CD-ROM (**Product Library**) into the CD-ROM drive.
- 3 Double-click the CD-ROM icon.
- 4 Double-click either **OS X 10.2 and 10.3 Only** or **OS X 10.4 or higher** depending on your Mac OS version.



- 5 Double-click **Kyocera OS X x.x**.



**6** The printer driver installation program starts up.

**7** Choose **Select Destination**, **Installation Type** and then install the printer driver as directed by the instructions in the installation software.



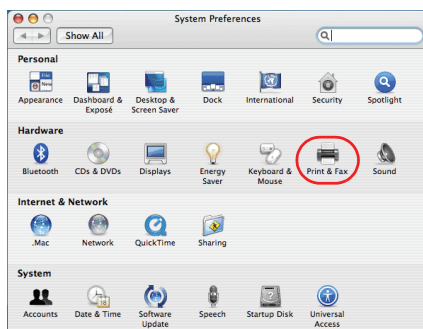
**Note** In addition to **Easy Install**, the **Installation Type** options include **Custom Install**, which allows you to specify the components to be installed.

**IMPORTANT** In the Authenticate screen, enter the name and password used to log in to the operating system.

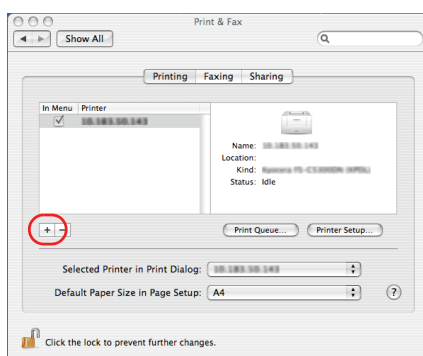
This completes the printer driver installation. Next, specify the print settings.

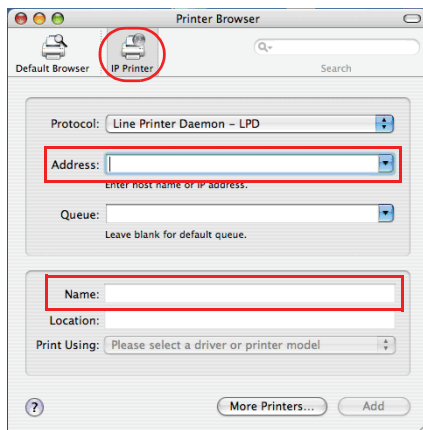
If an IP or AppleTalk connection is used, the settings below are required. If a USB connection is used, the printer is automatically recognized and connected.

**8** Open **System Preferences** and click **Print & Fax**.

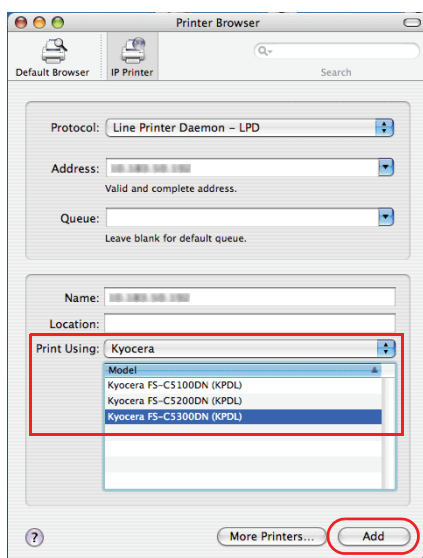


**9** Click the plus symbol (+) to add the installed printer driver.

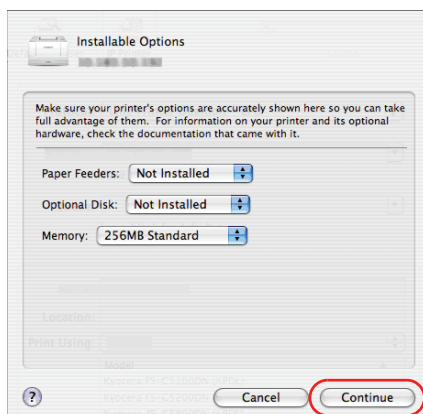




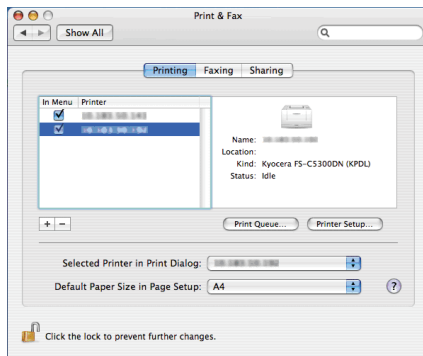
**10** Click the IP icon for an IP connection or the AppleTalk icon for an AppleTalk connection and then enter the IP address and printer name.



**11** Select the installed printer driver and click **Add**.



**12** Select the options available for the printer and click **Continue**.



**13** The selected printer is added. This completes the printer setup procedure.

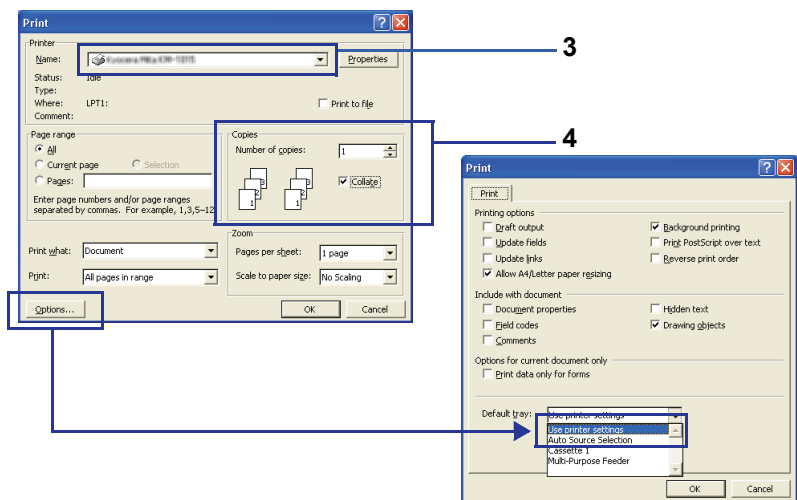


## Printing from Application Software

The steps required to print a document created with an application are explained below. You can select the printing Paper Size and Output Destination.

- 1 Load the paper required into the paper cassette.
- 2 From the application File menu, select **Print**. The Print dialog box displays.
- 3 Click the drop down list of printer names. All the printers installed in Windows are listed. Click the name of the machine.
- 4 Use **Number of copies** to enter the number of prints required. Up to 999 copies can be entered.

For Microsoft Word, we recommend that you click **Options** and specify **Use printer settings** for the **Default tray**.



- 5 To start printing, click **OK**.



**Note** For information on how to use the printer driver software, refer to *KX Printer Driver User Guide*.

---

## Status Monitor

The Status Monitor monitors the printer status and provides an ongoing reporting function. It also allows you to specify and modify settings for printers not included in the KX driver.

The Status Monitor is installed automatically during KX driver installation.

### Accessing the Status Monitor

Use either of the methods listed below to launch the Status Monitor.

- Launch when printing starts:  
When you specify a printer and start a print job, one Status Monitor is launched for each printer name. If Status Monitor startup is requested from multiple printers, Status Monitors are launched for each printer that issues the request.
- Launch from the KX driver properties:  
Click the About button in the KX driver Properties dialog box. Then click **Status Monitor** in the About dialog box to launch the Status Monitor.

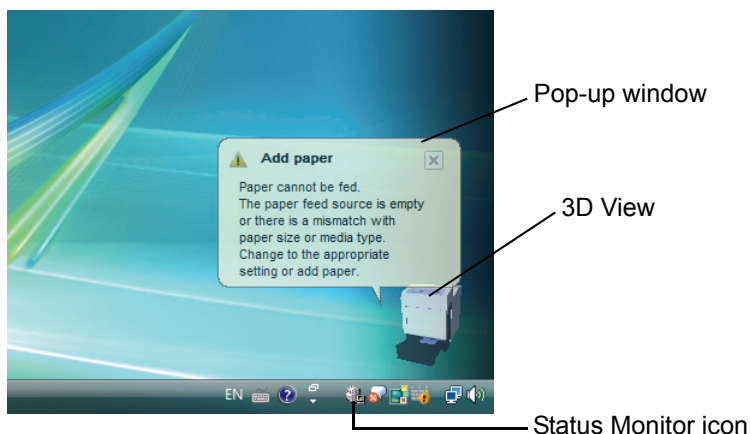
### Exiting the Status Monitor

Use either of the methods listed below to exit the Status Monitor.

- Exit manually:  
Right-click the Status Monitor icon in the taskbar and select **Exit** in the menu to exit the Status Monitor.
- Exit automatically:  
The Status Monitor automatically shuts down after 5 minutes if it is not being used.

### Screen Overview

The screen overview of the Status Monitor is as follows.



#### Pop-up window

If an information notification event occurs, a pop-up window appears. This window only appears when the 3D View is open on the desktop.

---

### 3D View

This shows the status of the monitored printer as a 3D image. You can choose whether to show or hide the 3D view from the menu displayed when you right-click the Status Monitor icon.

If an information notification event occurs, the 3D view and an alert sound are used to notify you. For information on the sound notification settings, refer to *Status Monitor Settings on page 2-20*.

### Status Monitor icon

While the **Status Monitor** is running, its icon is displayed in the taskbar notification area. When you position the cursor over the icon, the printer name appears. Right-clicking the **Status Monitor icon** allows you to set the options below.

#### Show the status monitor

Displays or hides the **Status Monitor icon**.

#### Configure...

If the printer is connected to a TCP/IP network and has its own IP address, use a web browser to access the COMMAND CENTER to modify or confirm the network settings. For more information, refer to the *COMMAND CENTER Operation Guide*.

#### Preferences...

Specify the **Sound Notification** and **Appearance** settings for the Status Monitor. For details, refer to *Status Monitor Settings on page 2-20*.

#### Kyocera Online

Accesses the Kyocera Mita website.

#### Exit

Exits the **Status Monitor**.

---

## Status Monitor Settings

Use the **Preference** option to set up the Status Monitor. The Status Monitor has two tabs to configure its settings.

### Sound Notification Tab

The Sound Notification tab contains the following items.

**IMPORTANT** To confirm the settings on Sound Notification tab, the computer requires the sound capabilities such as sound card and speaker.

### Enable Event Notification

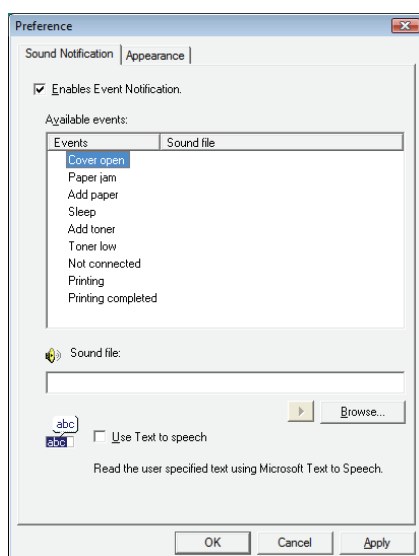
Select to enable or disable monitoring the events in Available events.

### Sound file

A sound file can be selected if you require an audible notification. Click **Browse** to search for the sound file.

### Use Text to speech

Select this check box to enter text you would like to hear played for events. Although a sound file is unnecessary, this function is applicable for Windows XP or later.




To use this function, follow these steps.

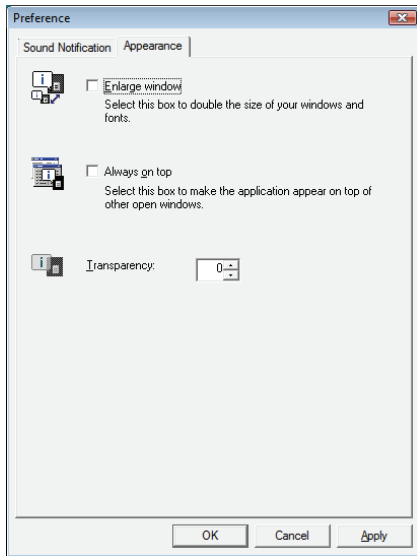
- 1 Select **Enable Event Notification**.
- 2 Select an event to use with the text to speech function in Available events.
- 3 Click Browse to notify the event by sound file.



**Note** The available file format is WAV.

Select **Use Text to speech** to speech the text entered in Text to speech box when an event occurred.

- 4 Click **Play**  to confirm the sound or text is played correctly.



## Appearance Tab

The Appearance tab is contains the following items.

### Enlarge window

Doubles the size of the Status Monitor window.

### Always on top

Positions the Status Monitor in front of other active windows.

### Transparency

Displays the Status Monitor as a transparent window.

---

## Uninstalling Software (Windows PC)

The software can be uninstalled (removed) using the CD-ROM (Product Library) supplied with the printer.

**IMPORTANT** On Macintosh computers, because the printer settings are specified using a PPD (PostScript Printer Description) file, the software cannot be uninstalled using the CD-ROM (Product Library).

- 1** Exit all active software applications.
- 2** Insert the enclosed CD-ROM (Product Library) into the CD-ROM drive.
- 3** Following the procedure used to install the printer driver, click **Remove Software**. The Kyocera Uninstaller wizard appears.
- 4** Select the software package to remove.
- 5** Click **Uninstall**.



**Note** In Windows Vista, the **Remove Driver and Package** screen appears. Select **Remove driver and driver package**, and click **OK**.

The uninstaller starts.

- 6** When Uninstall complete screen appears, click **Next**.
- 7** Select whether you restart your computer or not, click **Finish**.

# 3 Maintenance

---

This chapter contains explanations on the following topics:

General Information	3-2
Toner Container Replacement	3-2
Replacing the Waste Toner Box	3-6
Cleaning the Printer	3-8

---

## General Information

This chapter describes basic maintenance tasks you can perform on the printer. You can replace the following component according to the printer's display:

- Toner Kits
- Waste Toner Box

Also, the following parts need periodic cleaning:

- Paper Transfer Unit



**Note** Information Collection on Memory Chips - The memory chip attached to the toner container is designed to improve convenience for the end user; to support the recycling operation of empty toner containers; and to gather information to support new product planning and development. The information gathered is anonymous - it cannot be associated to any specific individual and the data is intended to be used anonymously.

## Toner Container Replacement

The toner container in the printer should be replaced as soon as the message display shows `Toner low` or soon after. If you continue to use the printer, eventually the toner supply will be exhausted at which point the printer will stop printing and the `Replace toner C,M,Y,K` message will be shown instructing you to install a new toner kit.

### Frequency of Toner Container Replacement

The life of the toner containers depends on the amount of toner required to accomplish your printing jobs. According to ISO/IEC 19798 and EcoPrint switched off the toner container can print as follows (A4/Letter paper is assumed):

#### FS-C5100DN

Toner Color	Life of the Toner Container (Printable pages)
Black	5,000 images
Cyan	4,000 images
Magenta	4,000 images
Yellow	4,000 images

#### FS-C5200DN

Toner Color	Life of the Toner Container (Printable pages)
Black	7,000 images
Cyan	6,000 images
Magenta	6,000 images
Yellow	6,000 images



## FS-C5300DN

Toner Color	Life of the Toner Container (Printable pages)
Black	12,000 images
Cyan	10,000 images
Magenta	10,000 images
Yellow	10,000 images



**Note** The toner container packed with the new printer has to fill up the system when operating the first time. Therefore only 50% of the first toner kits can be used for printing. (For example: FS-C5200DN can print 3,500 monochrome images using the black starter toner container).

### Toner Kits

For best results, we recommend that you only use genuine Kyocera Parts and Supplies.

The toner kits are supplied in 4 different colors: cyan, magenta, yellow and black.

A new toner kit for each color contains the following items:

- Toner Container
- Plastic waste bags for old toner container and old waste toner box
- Waste Toner Box
- Installation Guide



**Note** Do not remove the toner container from the carton until you are ready to install it in the printer.

### Understanding Messages Requesting Toner Container Replacement

The printer displays messages for individual colors at two stages of toner usage. This message is automatically alternated with the other printer message (such as *Ready*):

- When the printer becomes low on toner, for example in the cyan container, the printer displays the message *Toner low C* as the first caution. Note the replacement is not always necessary at this stage.
- If you ignore the above message and continue printing, the printer displays the message *Replace toner* — just before the toner is used up. The toner container must be replaced immediately. Clean the separate charger wires, etc. After the cleaning is finished, however, the message does not automatically change to *Ready*. To restart printing, you must press **[GO]** and make the printer ready.

In either case, replace the toner container, refer to *Toner Container Replacement* on page 3-2.

## Replacing the Toner Container

This section explains how to replace the toner containers. When replacing the toner container of any color, always replace the waste toner box at the same time. If this box is full, the printer may be damaged or contaminated by the waste toner that may spill over the box.



**CAUTION** Do not attempt to incinerate the Toner Container. Dangerous sparks may cause burns.

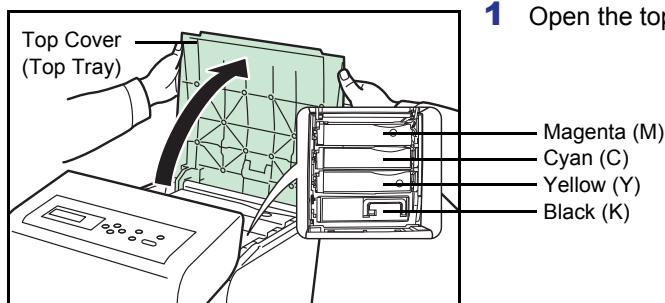
**IMPORTANT** During toner container replacement, temporarily move storage media and computer supplies (such as floppy disks) away from the toner container. This is to avoid damaging media by the magnetism of toner.

**IMPORTANT** Kyocera Mita Corporation is not liable against any damages or problems arising from the use of toner containers other than those designated as original Kyocera toner containers. For optimum performance, it is also recommended to use only the Kyocera toner containers which are specifically intended for use in your country or region. If the toner container for another destinations is installed, the printer will stop printing.

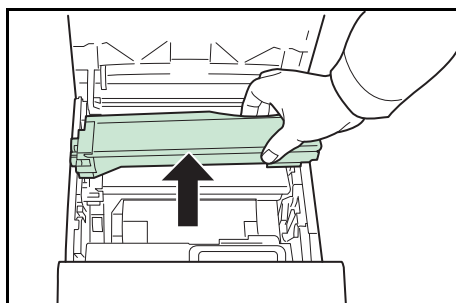


**Note** You do not have to turn printer power off before starting the replacement. Any data that may be processing in the printer will be deleted if you turn the printer power off.

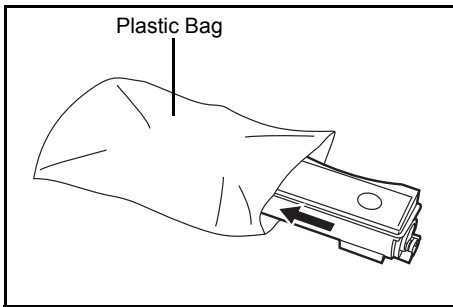
To replace the toner container, first make sure of the color of the toner container requiring replacement. In this example, it is assumed that you are replacing the yellow toner container.



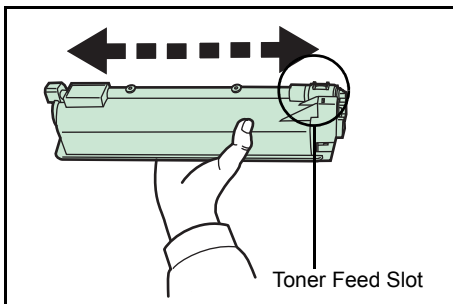
**1** Open the top cover (top tray).



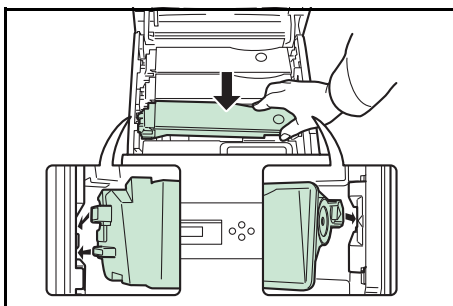
**2** Carefully remove the old toner container from the printer.



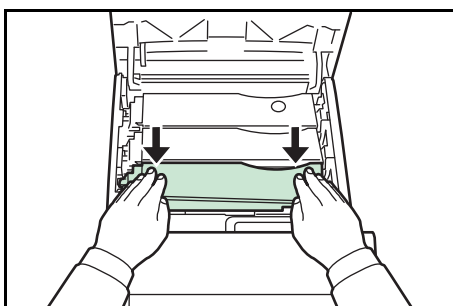
- 3 Put the old toner container in the plastic bag (contained in the toner kit) and discard it later according to the local code or regulations for waste disposal.



- 4 Take the new toner container out of the toner kit.
- 5 Shake the new toner container 5 or 6 times as shown in the figure in order to distribute the toner evenly inside the container. Do not press too firmly on the center of the toner container or touch the toner feed slot.



- 6 Set the new toner container in the printer as shown in the figure below.



- 7 Push down on the top of the toner container to install it firmly in place. Use the same procedure to replace the other color toner containers.

- 8 Close the top cover (top tray).



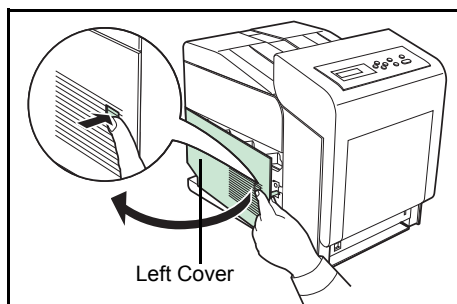
**Note** If the top cover (top tray) does not close, check that the new toner container is installed correctly (in step 7). After use, always dispose of the toner container and the waste toner box in accordance with Federal, State and Local rules and regulations.

Proceed to the next section.

## Replacing the Waste Toner Box

Replace the waste toner box when the `Check waste toner box` message is displayed. A new waste toner box is included with the toner kit. The waste toner box needs to be replaced before the printer will operate.

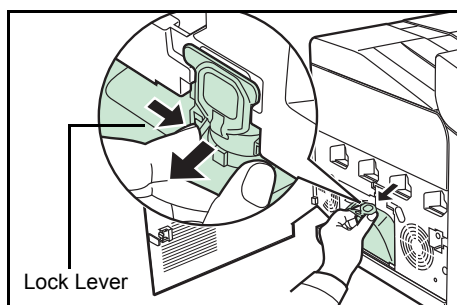
- 1 Open the left cover.



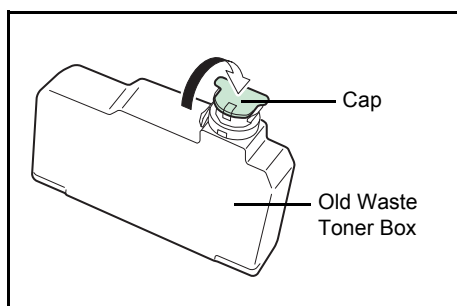
- 2 While holding the waste toner box, press the lock lever and then gently remove the waste toner box.



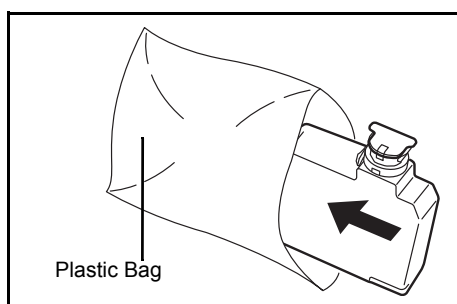
**Note** Remove the waste toner box as gently as possible so as not to scatter the toner inside. Do not let the opening of the waste toner box face downward.

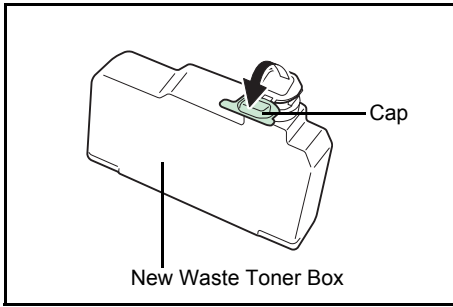


- 3 Close the cap to the old waste toner box after removing the box from the printer.

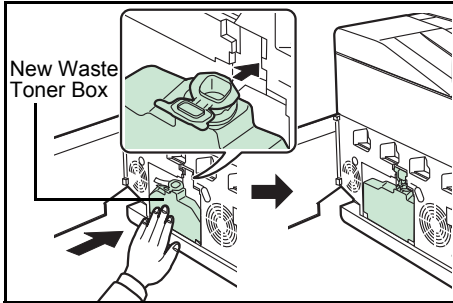


- 4 To prevent toner from spilling, put the old waste toner box in the plastic bag (contained in the toner kit) and discard it later according to the local code or regulations for waste disposal.





- 5** Open the cap of the new waste toner box.



- 6** Insert the new waste toner box as shown in the figure. When the box is set correctly, it will snap into place.

- 7** Make sure that the waste toner box is correctly inserted and close the left cover.

After replacing the toner containers and the waste toner box, clean the paper transfer unit. For instructions, refer to *Cleaning the Printer* on page 3-8.

---

## Cleaning the Printer

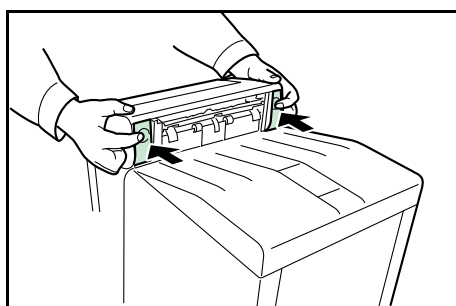
The paper transfer unit should be cleaned each time the toner container and waste toner box are replaced.

To maintain optimum print quality, it is also recommended that the inside of the printer be cleaned once a month as well as when the toner container is replaced.

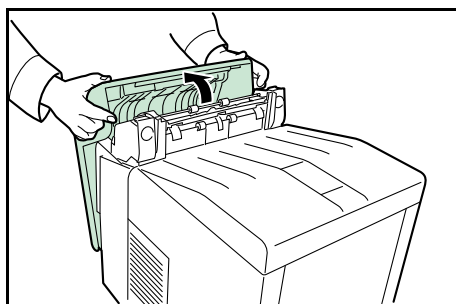
It should also be cleaned if streaking or lines appear on printed copies, or if printouts appear faint or blurred.

### Cleaning the Paper Transfer Unit

Print problems such as soiling of the reverse side of printed pages may occur if the paper transfer unit becomes dirty. To clean the paper transfer unit, you must use the dry cloth.

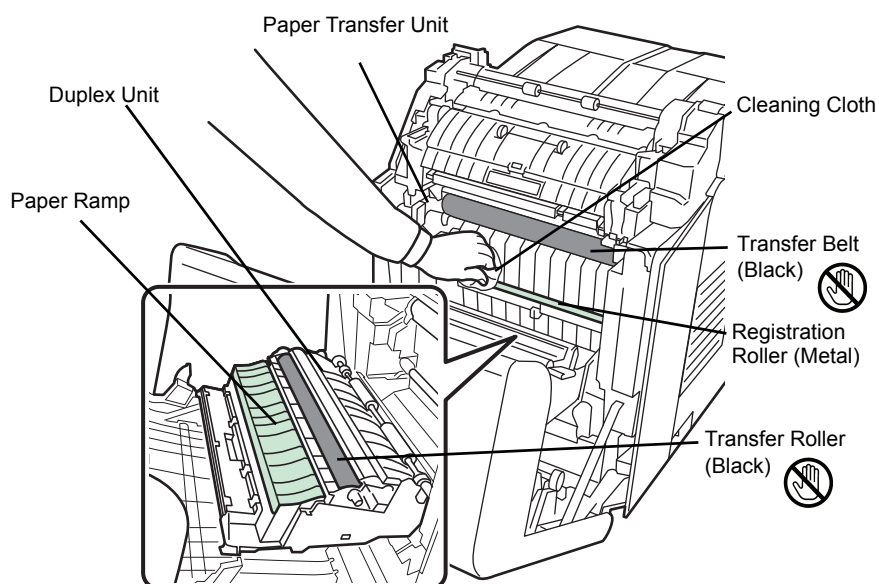



**1** Press the lever to release the lock.




**2** Pull out the front cover.

- 3 Wipe away the paper dust on the registration roller and the paper ramp using the cleaning cloth.



 **Note** Be careful not to touch the black transfer roller and black transfer belt during cleaning as this may adversely affect print quality.

- 4 Push the front cover back in completely.

 **Note** Take care not to get your hands caught in the front cover when you close it.





# 4 Troubleshooting

---

This chapter contains explanations on the following topics:

<b>General Guidelines</b>	<b>4-2</b>
<b>Print Quality Problems</b>	<b>4-3</b>
<b>Error Messages</b>	<b>4-6</b>
<b>Clearing Paper Jams</b>	<b>4-12</b>

If a problem cannot be corrected, contact your service technician.

---

## General Guidelines

The table below provides basic solutions for problems you may encounter with the printer. We suggest you consult this table to troubleshoot the problems before calling for service.

Symptom	Check Items	Corrective Action
Print quality is not good.	Refer to <i>Print Quality Problems on page 4-3</i> .	
Paper is jammed.	Refer to <i>Clearing Paper Jams on page 4-12</i> .	
Nothing lights on the operation panel even when power is turned on and the fan makes no noise.	Check that the power cord is properly plugged into the power outlet.	Turn off the printer's power, plug in the power cord securely, and try turning on the printer's power again.
	Check that the power switch is in the On (I) position.	Set the power switch to the On position.
The printer prints a status page, but does not print jobs from the computer.	Check the printer cable or the interface cable.	Connect both ends of the printer cable securely. Try replacing the printer cable or the interface cable.
	Check program files and application software.	Try printing another file or using another print command. If the problem occurs only with a specific file or application, check the printer driver settings for that application.
The printer is emitting steam in the area around the top tray.	Check the room temperature to see if it is low, or if damp paper was used.	Depending on the printing environment and the paper's condition, the heat generated during printing will cause the moisture in the paper to evaporate, and the steam emitted may look like smoke. This is not a problem, and you can continue printing. If the steam concerns you, raise the room temperature, or replace the paper with a newer, dryer paper.

## Tips

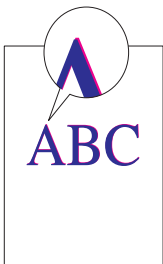
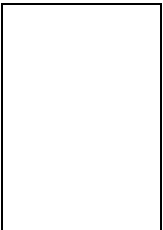

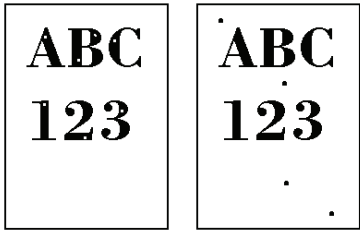
Printer problems may be solved easily by following the tips below. When you have encountered a problem that following the above guidelines will not solve, try the following:

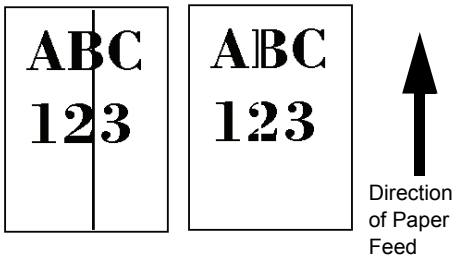
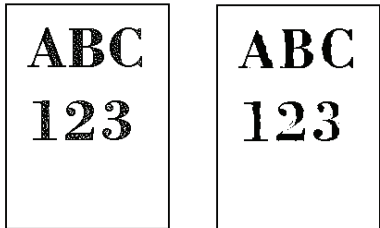
- Turn the printer power off and wait for several seconds. Then, turn on the printer.
- Reboot the computer which sends the print jobs to the printer.
- Obtain and use the latest version of the printer driver. The latest versions of printer drivers and utilities are available at:  
<http://www.kyoceramita.com/download/>.
- Make sure that the procedures for printing are correctly followed in the application software. Consult the documentation supplied with the application software.

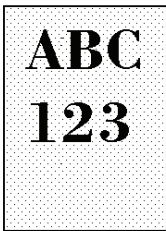
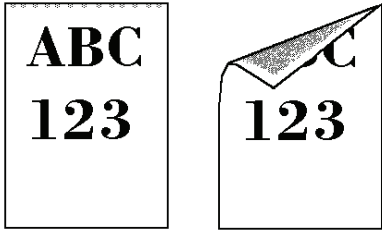
## Print Quality Problems

The tables and diagrams in the following sections define print quality problems and the corrective action you can conduct to solve the problems. Some solutions may require cleaning or replacing parts of the printer.

If the suggested corrective action will not solve the problem, call for service.

Printed Results	Corrective Action
<b>Skewed-color printout</b> 	<p>Conduct color registration using the printer operation panel. For details, refer to <i>Registration Normal (Color registration [standard])</i> section or <i>Registration Details (Color registration [detailed])</i> section of the <i>Advanced Operation Guide</i>.</p>
<b>Completely blank printout</b> 	<p>Check the toner containers. Open the printer top cover (top tray) and check that the toner containers are correctly installed in the printer. For more information on installing the toner containers, refer to <i>Toner Container Replacement on page 3-2</i>.</p> <p>Check that the application software is correctly operated.</p>
<b>Full single-color printout</b> 	<p>Check the main charger unit. Open the left cover and check that the main charger unit is correctly installed.</p>
<b>Dropouts or stray dots</b> 	<p>Clean the main charger units. For details, refer to <i>LSU/Charger (LSU/Main charger cleaning mode setting)</i> section of the <i>Advanced Operation Guide</i>.</p>

Printed Results	Corrective Action
<p><b>Black or white vertical streaks</b></p> 	<p>Check the operation panel for toner. If the <b>Toner low C,M,Y,K</b> message is displayed with color description, install a new toner kit for the color. To replace the toner container, refer to <i>Toner Container Replacement on page 3-2</i>.</p> <p>Clean the main charger units. For details, refer to <i>LSU/Charger (LSU/Main charger cleaning mode setting)</i> section of the <i>Advanced Operation Guide</i>.</p> <p>Refresh drum. Perform the following procedures on the operation panel and try cleaning the drum surface using the printer's built-in cleaning system.</p> <ol style="list-style-type: none"> <li>1 Press <b>[MENU]</b>.</li> <li>2 Press <math>\triangle</math> or <math>\nabla</math> repeatedly until <b>Adjust/Maintenance &gt;</b> appears.</li> <li>3 Press <math>\triangleright</math>. Press <math>\triangle</math> or <math>\nabla</math> repeatedly until <b>&gt;Service &gt;</b> appears.</li> <li>4 Press <math>\triangleright</math>. Press <math>\triangle</math> or <math>\nabla</math> repeatedly until <b>&gt;&gt;Drum</b> appears.</li> <li>5 Press <b>[OK]</b> twice.</li> <li>6 The message display shows <b>Please wait</b>. After approx. 3 minutes, the display returns to <b>Ready</b>.</li> </ol>
<p><b>Faint or blurred printing</b></p> 	<p>Clean the main charger units. For details, refer to <i>LSU/Charger (LSU/Main charger cleaning mode setting)</i> section of the <i>Advanced Operation Guide</i>.</p> <p>Make sure the paper type setting is correct the paper being used. For details, refer to <i>Paper Settings</i> section of the <i>Advanced Operation Guide</i>.</p> <p>Conduct color calibration either by switching the printer off then on or using the printer operation panel. For details, refer to <i>Color Calibration</i> section of the <i>Advanced Operation Guide</i>.</p> <p>Try adjusting the color control settings using the printer driver.</p> <p>Check the operation panel. If the <b>Toner low C,M,Y,K</b> message is displayed with color description, install a new toner kit for the color. To replace toner, refer to <i>Toner Container Replacement on page 3-2</i>.</p> <p>Refresh drum. Perform the following procedures on the operation panel and try cleaning the drum surface using the printer's built-in cleaning system.</p> <ol style="list-style-type: none"> <li>1 Press <b>[MENU]</b>.</li> <li>2 Press <math>\triangle</math> or <math>\nabla</math> repeatedly until <b>Adjust/Maintenance &gt;</b> appears.</li> <li>3 Press <math>\triangleright</math>. Press <math>\triangle</math> or <math>\nabla</math> repeatedly until <b>&gt;Service &gt;</b> appears.</li> <li>4 Press <math>\triangleright</math>. Press <math>\triangle</math> or <math>\nabla</math> repeatedly until <b>&gt;&gt;Drum</b> appears.</li> <li>5 Press <b>[OK]</b> twice.</li> <li>6 The message display shows <b>Please wait</b>. After approx. 3 minutes, the display returns to <b>Ready</b>.</li> </ol>

Printed Results	Corrective Action
<p><b>Grey background</b></p> 	<p>Clean the main charger units. For details, refer to <i>LSU/Charger (LSU/Main charger cleaning mode setting)</i> section of the <i>Advanced Operation Guide</i>.</p> <hr/> <p>Conduct color calibration either by switching the printer off then on or using the printer operation panel. For details, refer to <i>Adjust/Maintenance (Adjust/Maintenance selection/setting)</i> section of the <i>Advanced Operation Guide</i>.</p>
<p><b>Dirt on the top edge or back of the paper</b></p> 	<p>Check the paper chute and the ramp. Pull out the paper transfer unit and check for toner on the paper ramp. Clean the paper ramp using a soft, dry, lint-free cloth. For details, refer to <i>Cleaning the Paper Transfer Unit</i> on page 3-8.</p> <hr/> <p>Clean the main charger units. For details, refer to <i>LSU/Charger (LSU/Main charger cleaning mode setting)</i> section of the <i>Advanced Operation Guide</i>.</p>

## Error Messages

The following table lists errors and maintenance messages that you can be dealt with by yourself. If **Call service** appears, turn off the printer, disconnect the power cord, and contact your service technician.

If **Call service** or **Error.Power off.** is displayed, turn off the printer then turn it back on to see if the printer has recovered. If the printer has not recovered, turn off the printer, disconnect the power cord, and contact your service representative or authorized service center.

Some errors cause the alarm to sound. To stop the alarm, press **[Cancel]**.

Message	Corrective Action
Account error ## Press GO	This message is displayed when the Job Accounting function is enabled and an attempt to specify job accounting settings or to register or delete an account fails. To return the printer to the print-ready status, press <b>[GO]</b> .
Add paper MPTray	The paper has run out in the paper source displayed. Supply paper according to the paper source displayed (paper cassettes, MP tray, or optional paper feeders). This message is displayed alternately with messages indicating the printer status, such as, <b>Ready</b> , <b>Please wait</b> , and <b>Processing</b> .
Call service F000F###:	F### represents a controller error (#=0, 1, 2, ...). Call for service. The printer does not operate when this message is displayed.
Call service ####:0123456	#### represents a mechanical error (#=0, 1, 2, ...). Call for service. The printer does not operate when this message is displayed. The total number of pages printed is also indicated, e.g. 0123456.
Canceling data	Displayed when data is being canceled.
Cassette # not loaded	The corresponding paper cassette is not installed. Install the cassette. The cassette number can be 1 (topmost) to 4 (bottom).
Change envelope switch position	Displayed when the paper type does not match the envelope switch setting.
Check cassette #	This message is displayed when a paper lift error has occurred in the paper source's cassette. Pull out the cassette for the paper source displayed (either the paper cassettes or optional paper feeders) and check if the paper is loaded correctly.  The message <b>Call service</b> is displayed when this error occurs repeatedly.
Check waste toner box	This message warns following two cases. Install the new waste toner box. The waste toner box is not installed. The waste toner box is full.
Clean printer Press GO	Please clean the inside of the printer. Refer to <i>Cleaning the Printer on page 3-8</i> . This message will be displayed when replacing the toner container after the message <b>Replace toner Clean printer</b> is displayed. After cleaning the inside of the printer, press <b>[GO]</b> and the printer will be ready for printing.
Close front cover	The front cover of the printer is open. Close the front cover.
Close left cover	The left cover of the printer is open. Close the left cover.

Message	Corrective Action
Close top cover	The top cover of the printer is open. Close the printer top cover.
Device busy	This message is displayed when <code>Remove Device</code> was selected while a USB memory was being used. The previous screen is displayed again 1 or 2 seconds.
Duplex disabled Press GO	You attempted to print with a paper size and paper type that cannot be used for duplex printing. Press <b>[GO]</b> to print onto one-side of the paper only.
Enter Account	An account code must be entered. This message is displayed if you try to print from the operation panel (e.g. printing a status page or using the Job Retention function) when the Job Accounting function is enabled. For more information, refer to <i>Job Accounting (Job Accounting selection/setting)</i> section of the <i>Advanced Operation Guide</i> .
Envelope mode	Displayed when the envelope switch is set to envelope mode.
Error.Power off. F###	Turn the power switch off and then back on again. If this message still remains, turn the power switch off, and contact your service representative or authorized service center.
Error.Power off. F000	The printer controller and operation panel cannot exchange data. Turn the printer off and unplug it from the mains power supply. Then contact your service representative or authorized service center. See the back page of this manual for the relevant phone numbers.
Exceeded Max.out Press GO	This message is displayed when the Job Accounting function is enabled and an attempt has been made to exceed the print limit set for each account. To return the printer to the print-ready status, press <b>[GO]</b> . For more information, refer to <i>Job Accounting (Job Accounting selection/setting)</i> section of the <i>Advanced Operation Guide</i> .
File not found Press GO	The specified file was not found on the hard disk, RAM disk or memory card. For more information on the hard disk, RAM disk and memory cards, refer to <i>Device Common (Selecting/Setting the common device)</i> section of the <i>Advanced Operation Guide</i> .
Format error Hard disk	The hard disk installed in the printer is not formatted, and therefore cannot be read or written.
Format error Memory card	The memory card inserted in the printer is not formatted, and therefore cannot be read or written. To format a memory card, follow the procedure in <i>Memory Card (Using the memory card)</i> section of the <i>Advanced Operation Guide</i> .
Hard disk err ## Press GO	A hard disk error has occurred. Look at the error code given in place of ## and refer to <i>Storage Error Codes on page 4-10</i> . To ignore the hard disk error, press <b>[GO]</b> .
ID error	The user ID entered for a private job is not correct. Check the user ID that you specified on the printer driver. For more information, refer to <i>Job Box</i> section of the <i>Advanced Operation Guide</i> .
Illegal Account Press GO	This message is displayed when the Job Accounting function is enabled and no account is set for a transmitted print job or the specified account is not registered (the incorrect account is set). To return the printer to the print-ready status, press <b>[GO]</b> . For more information, refer to <i>Job Accounting (Job Accounting selection/setting)</i> section of the <i>Advanced Operation Guide</i> .
Install MK	Replace Maintenance Kit which is displayed on the message display. Replacement of the maintenance kit is necessary at every 200,000 images of printing and requires professional servicing. Contact your service technician.

Message	Corrective Action
Job not stored Press GO	Printing using the Job Box function failed because there was insufficient space available on the hard disk or RAM disk, or because the RAM disk was disabled when demounting the hard disk. To print an error report and return the printer to the print-ready status, press <b>[GO]</b> .
Job restricted Press GO	This message is displayed when printing was attempted, despite the Job Account function being on with Restriction applied as the job limit for each job account. To return the printer to the print-ready status, press <b>[GO]</b> . For more information, refer to <i>Job Accounting (Job Accounting selection/setting)</i> section of the <i>Advanced Operation Guide</i> .
KPDL error ## Press GO	Current print processing cannot continue because of occurrence of KPDL error which is categorized by ##. To print out an error report, display >>Error Report from the menu system, and select On. Press <b>[GO]</b> to resume printing. You can abandon printing by pressing <b>[Cancel]</b> . If Auto Error Clear is set to On, printing will be automatically resumed after a preset period of time.
Load Cassette # (A4) / (PLAIN)	The paper cassette matching the paper size and paper type of the print job is empty. Load paper into the paper cassette as displayed in place of #. Press <b>[GO]</b> to resume printing. If you want to print from a different paper source, press $\Delta$ or $\nabla$ to display Use alternative? and you can change the source for paper feeding. After selecting a paper source and pressing <b>[MENU]</b> , Paper Settings > appears. By pressing the $\Delta$ , the paper type settings menu appears. After setting the correct paper type, press <b>[OK]</b> and printing starts.
Load MP Tray (A4) / (PLAIN)	There is no paper cassette installed in the printer that matches the paper size and paper type of the print job. Set paper in the MP tray. Press <b>[GO]</b> to resume printing. (Note that feeding the paper having a paper size which does not match the current paper size from the MP tray can cause paper jam.) If you want to print from a different paper source, press $\Delta$ or $\nabla$ to display Use alternative? and you can change the source for paper feeding. After selecting a paper source and pressing <b>[MENU]</b> , Paper Settings > appears. By pressing the $\Delta$ , the paper type settings menu appears. After setting the correct paper type, press <b>[OK]</b> and printing starts.
Low security	This message is displayed when Low was selected in Security Level.
Memory overflow Press GO	The total amount of data received by the printer exceeds the printer's internal memory. Try adding more memory. Press <b>[GO]</b> to resume printing. You can abandon printing by pressing <b>[Cancel]</b> . If Auto Error Clear is set to On, printing will be automatically resumed after a preset period of time.
MemoryCard err## Press GO	A memory card error has occurred. Look at the error code given in place of ## and refer to <i>Memory Card and USB Memory Errors on page 4-11</i> . To return the printer to the print-ready status, press <b>[GO]</b> .
No multi copies Press GO	Multi copies cannot be printed because RAM disk is disabled or the hard disk is not installed. Try adding more memory or installing hard disk, and configuring the RAM disk settings.
No power supply Cassette	This message is displayed when the optional paper feeder PF-510 is not connected to a power source and COATED (coated paper) is selected as the paper type setting. Connect it to a power source via the printer.
Original toner installed	Displayed when the installed toner is the original Kyocera product.



Message	Corrective Action
Paper jam #####	A paper jam has occurred. The location of the paper jam is indicated in place of the #'s. For details, refer to <i>Clearing Paper Jams on page 4-12</i> .
Paper loading	The selected cassette is being prepared.
Paper path error	There is no paper cassette in the feeder, or the cassette is not inserted properly. After reinserting the paper cassette, you should be able to print. When two or more optional feeders are installed and the lowest one is selected, the same message will appear if any of the upper paper feeder and the printer cassette is improperly installed.
Print overrun Press GO	The data transferred to the printer was too complex to print on a page. Press <b>[GO]</b> to resume printing.
RAM disk error## Press GO	A RAM disk error has occurred. Look at the error code given in place of ## and refer to <i>Storage Error Codes on page 4-10</i> . To ignore the RAM disk error, press <b>[GO]</b> .
Replace toner C,M,Y,K  ↓ ↑ Replace toner Clean printer	Two message items are displayed alternately. Toner has run out in the toner container(s). Replace the toner container using a new toner kit for the particular color. The printer does not operate when this message is displayed. For example, if <i>Replace toner C,K</i> is displayed, replace the cyan and the black toner containers.
Toner low C,M,Y,K	Replace the toner container using a new toner kit. Color of the toner container that needs to be replaced is represented by C (Cyan), M (Magenta), Y (Yellow), and K (Black).
Top tray paper full	The top tray has become full (approx. 250 pages). You must remove all printed pages from the top tray. When the printer detects that the top tray is empty again, the printer will continue printing into the top tray.
Unknown toner installed	Displayed when the installed toner is not the original Kyocera product. Install original Kyocera toner.
Unknown toner PC C,M,Y,K	This message is displayed if the installed toner container's regional specification does not match the printer's. Install the specified toner container.
USB memory err## Press GO	An error has occurred in the USB memory device. To return the printer to the print-ready status, press <b>[GO]</b> .
Use alternative? Cassette 1	When the cassette does not contain any paper that matches the print data (paper size and type), this message allows you to specify an alternative cassette to use instead. A paper source number is only displayed when an optional paper feeder is installed. To print from a different paper source, refer to <i>Paper Feed Mode (Setting the paper feed source)</i> section of the <i>Advanced Operation Guide</i> .
Wrong Account	Displayed when an attempt is made to register an account in the Job Accounting menu by entering an account code that already exists. For more information, refer to <i>Job Accounting (Job Accounting selection/setting)</i> section of the <i>Advanced Operation Guide</i> .

Message	Corrective Action
Wrong ID	<ul style="list-style-type: none"> <li>The ID or Password entered for the Job Accounting function is not correct. Check the ID or Password. For more information, refer to <i>Job Accounting (Job Accounting selection/setting)</i> section of the <i>Advanced Operation Guide</i>.</li> <li>The user ID entered for a private job, or a stored job is not correct. Check the user ID that you specified on the printer driver.</li> </ul>
Wrong Password	The password does not match the password set. Enter the correct password. For more information, refer to <i>Job Accounting (Job Accounting selection/setting)</i> section of the <i>Advanced Operation Guide</i> .

## Storage Error Codes

### Hard Disk Errors

Code	Meaning
01	Hard disk format error. If this error recurs even if the power has been turned off and then on, reformat the hard disk.
02	The disk system is not installed. Recheck the requirements for using the system and the devices.
04	There is no available hard disk space. Delete unnecessary files, etc., in order to free up space.
05	The specified file does not exist in the hard disk.
06	There is no memory available to the hard disk system. Increase the available memory.
10	Formatting is not possible because host data is being spooled on the hard disk. Wait until the hard disk is ready, and then format.
97	The number of permanent code jobs that can be stored reached the limit value, and no more can be saved. Either delete some unnecessary jobs, etc., or increase the limit.
98	An unreadable page was found in a job (The job is damaged.).
99	A print job for the specified ID does not exist in the hard disk.

---

### Memory Card and USB Memory Errors

Code	Meaning
01	The printer does not support the memory card inserted, or the memory card is broken. Insert the correct memory card. For more information, refer to <i>Memory Card (Using the memory card)</i> section of the <i>Advanced Operation Guide</i> .
02	The memory card is not installed. Recheck the requirements for using the system and the memory card.
03	The memory card is write protected. Check the memory card's status.
04	There is not enough space in the memory card. Delete unnecessary files or use a new memory card.
05	The specified file is not on the memory card or the USB memory.
06	There is not enough printer memory to support the memory card system. Increase printer memory.
50	The memory card is write protected, or invalid. Check the memory card's status.

### RAM Disk Errors

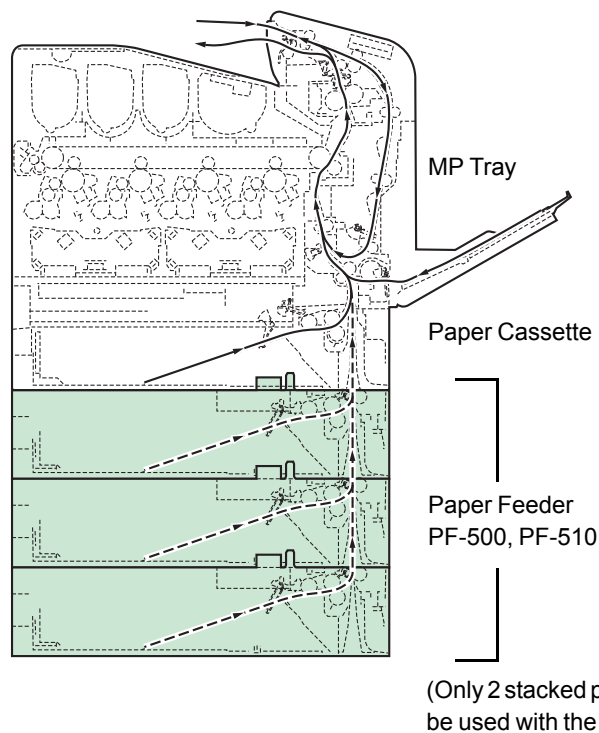
Code	Meaning
01	Format error. Try turning the power off and on again.
02	RAM disk mode is <b>Off</b> . Turn RAM disk mode <b>On</b> from the operation panel.
04	No disk space. Purge unnecessary files.
05	Specified file is not on disk.
06	Insufficient printer memory to support the RAM disk system. Expand printer memory.

## Clearing Paper Jams

If the paper jammed in the paper transport system, or no paper sheets were fed at all, the `Paper jam` message appears and the location of the paper jam (the component where the paper jam has occurred) is also indicated. The printer automatically goes off-line when this message is displayed. Remove jammed paper. After removing jammed paper, the printer will re-start printing.

### Possible Paper Jam Locations

The figure below explains the printer's paper paths including the options. The locations where paper jams might occur are also shown here, with each location explained in the table below. Paper jams can occur in more than one component on the paper paths.



Paper Jam Message	Description	Reference Page
Paper jam Printer	Paper is jammed inside the printer, paper cassette or MP tray.	page 4-13 page 4-14 page 4-15
Paper jam Cassette 2 (to 4)	Paper is jammed at the optional paper feeder's cassette.	page 4-15

---

## General Considerations for Clearing Jams

Bear in mind the following considerations when attempting jam removal:



**CAUTION** When pulling the paper, pull it gently so as not to tear it. Torn pieces of paper are difficult to remove and may be easily overlooked, deterring the jam recovery.

- If paper jams occur frequently, try using a different type of paper, replace the paper with paper from another ream, flip the paper stack over, or rotate the paper stack 180 degrees. The printer may have problems if paper jams recur after the paper was replaced.
- Whether or not the jammed pages are reproduced normally after printing is resumed depends on the location of the paper jam.

### Utilizing Online Help Messages

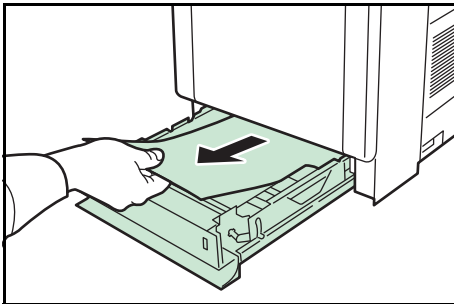
Online help messages are available in the printer's message display to provide simple instructions for clearing jams. Press ( ? ) when the paper jam message has appeared. Then a help message will appear to facilitate jam clearing in the location.

### Paper jam at Cassette

Paper is jammed at paper cassette.

- 1** First, open the printer's front cover and check for paper jams in the paper transfer unit.

For more information, refer to *Paper Jam in Printer on page 4-14*.



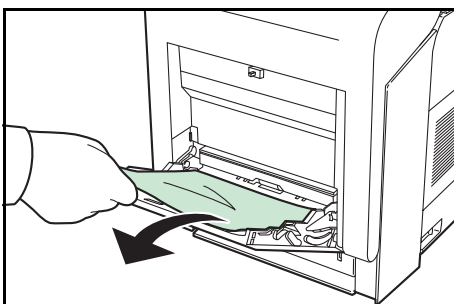
- 2** Pull out the paper cassette and remove the jammed paper.

### Paper Jam at MP Tray

Paper is jammed at the MP tray. Remove the jammed paper using the procedure given below.

- 1** First, open the printer's front cover and check for paper jams in the paper transfer unit.

For more information, refer to *Paper Jam in Printer on page 4-14*.



- 2** Remove the jammed paper.

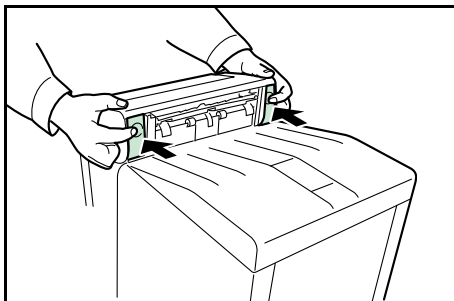
---

## Paper Jam in Printer

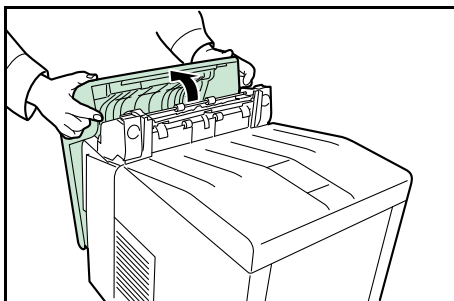
Paper is jammed at the paper cassette or inside the printer. Remove the jammed paper using the procedure given below.

**CAUTION** Components inside the fuser cover are hot. Do not touch it with your hands as it may result in burn injury.

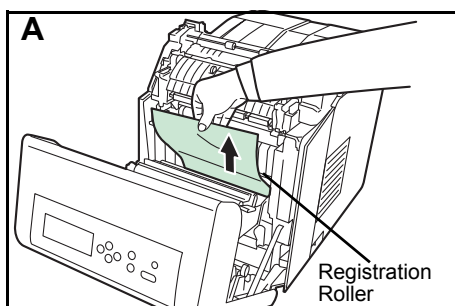
- 1** Press the lever to release the lock.



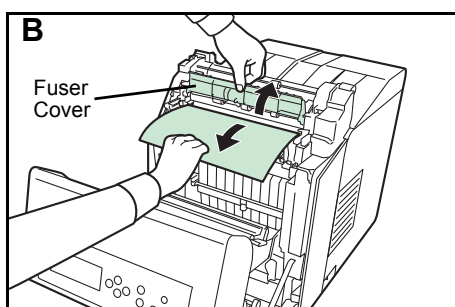
- 2** Pull the front cover towards you.

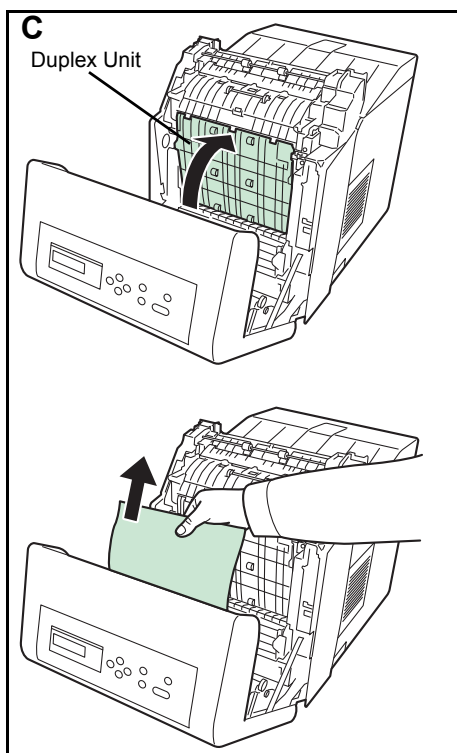


- 3** If the paper has jammed near the registration roller, as shown in **A**, remove the paper by pulling it up from the center.

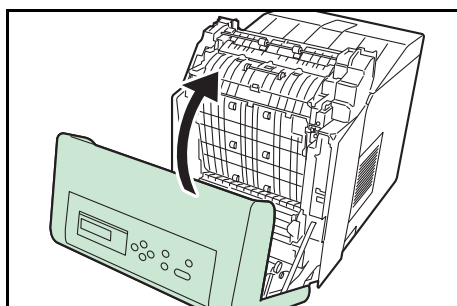


If the paper has jammed inside the fuser unit, as shown in **B**, open the fuser cover and remove the paper by pulling its edge.





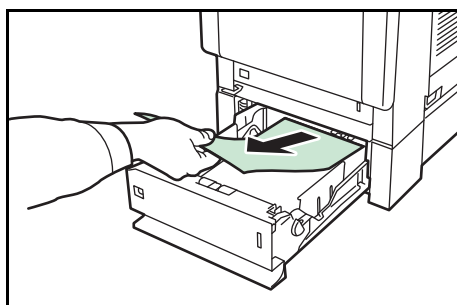
If the paper has jammed inside the duplex unit, as shown in **C**, lift the duplex unit and remove the paper by holding it in the middle.



**4** Close the front cover.

#### Paper Jam at Cassette 2 (to 4)

Paper is jammed at the paper cassette. Remove the jammed paper using the procedure given below.



Pull out the paper feeder and remove the jammed paper.





## 5 Specifications



**Note** Specifications are subject to change without notice.

Item		Description		
		FS-C5100DN	FS-C5200DN	FS-C5300DN
Printing Method		Electrophotographic four color (CMYK) printing using tandem (4) drum system		
Printing Speeds	Cassette	A4: 21 ppm, B5, A5, A6: 23 ppm <sup>*1</sup> , Letter: 23 ppm, Legal: 17 ppm		A4: 26 ppm, B5, A5, A6: 28 ppm <sup>*1</sup> , Letter: 28 ppm, Legal: 22 ppm
	MP Tray	A4: 19 ppm, B5, A5, A6: 20 ppm <sup>*1</sup> , Letter: 20 ppm, Legal: 17 ppm		A4: 23 ppm, B5, A5, A6: 24 ppm <sup>*1</sup> , Letter: 24 ppm, Legal: 20 ppm
Duplex Printing Speed		A4: 11 ppm, B5, A5: 11 ppm <sup>*2</sup> , Letter: 11 ppm, Legal: 8 ppm		A4: 26 ppm, B5, A5: 28 ppm <sup>*1</sup> , Letter: 28 ppm, Legal: 11 ppm
Resolution		600 dpi		
First Print Out Time		B/W : 10.5 seconds or less Color : 12 seconds or less (Sleep: 35 seconds or less)		B/W : 9 seconds or less Color : 10.5 seconds or less (Sleep: 35 seconds or less)
Warm-up Time (23°C, 60%RH)	Power On	44 seconds or less		36 seconds or less
	Sleep (within 3 hours)	25 seconds or less		30 seconds or less
Controller		PowerPC440-533 MHz		PowerPC440-667 MHz
Memory	Standard	256 MB		
	Maximum	1280 MB		
Operating Systems		Microsoft Windows 2000/XP/Vista, Windows Server 2003 Apple Macintosh OS X		
Interface	Standard	USB: Hi-Speed USB Network: 10 BASE-T/100 BASE-TX KUIO-LV slot		
	Option	-		Hard Disk
Memory Card Slot		1 (Compact Flash, 4 GB or less)		
Monthly Duty	Average	1,500 pages	2,000 pages	3,000 pages
	Maximum	50,000 pages	65,000 pages	100,000 pages

\*1 : After 16 pages the printing speed becomes 14 ppm.

\*2 : After 16 pages the printing speed becomes 7 ppm.

Item		Description		
		FS-C5100DN	FS-C5200DN	FS-C5300DN
Paper Sizes	Cassette	A4, B5, A5, Folio, 8 1/2 × 14"(Legal), 8 1/2 × 11"(Letter), Oficio II, Statement, Executive, ISO B5, A6, Envelope C5, 16K, and Custom		
	Cassette (Optional Paper Feeder PF-500/ PF-510)	Envelope Monarch, Envelope #10, Envelope #9, Envelope #6, Envelope DL, Envelope C5, A5, B5, ISO B5, A4, Executive, Letter, Legal, OufukuHagaki, Oficio II, Statement, Folio, Youkei 2, Youkei 4, 16K, and Custom		
	MP Tray	A4, B5, A5, Folio, 8 1/2 × 14"(Legal), 8 1/2 × 11"(Letter), Oficio II, Statement, Executive, A6, B6, ISO B5, Env. Monarch, Envelope #10, Envelope #9, Envelope #6, Envelope DL, Envelope C5, 16K, Hagaki, OufukuHagaki, Youkei 2, Youkei 4, and Custom		
Paper Types†	Cassette (Optional Paper Feeder PF-500)	Plain, preprinted, bond, recycled, rough, letterhead, color, prepunched, high quality, and custom		
	Cassette (Optional Paper Feeder PF-510)	Plain, preprinted, labels, bond, recycled, rough, letterhead, color, prepunched, envelope, cardstock, coated, thick, high quality, and custom		
	MP Tray	Plain, transparency, preprinted, labels, bond, recycled, vellum, rough, letterhead, color, prepunched, envelope, cardstock, coated, thick, high quality, and custom		
Paper Feed Source Capacity	Cassette	250 sheets (80 g/m <sup>2</sup> )	500 sheets (80 g/m <sup>2</sup> )	
	MP Tray	150 sheets (80 g/m <sup>2</sup> )	150 sheets (80 g/m <sup>2</sup> )	
Margin		4 mm (left, right, top and bottom)		
Output Tray Capacity	Top Tray	250 sheets (80 g/m <sup>2</sup> )		
Operation Environment	Temperature	10 to 32.5 °C (50 to 90.5 °F)		
	Relative Humidity	15 to 80 %		
	Altitude	2,500 m (8,202 feet) maximum		
	Illumination	1,500 lux maximum		
Power Source		120 V, 60 Hz, max. 9.2 A (U.S.A./Canada) 220-240 V, 50 Hz/60 Hz, max. 4.7 A (European countries) Max. allowable voltage fluctuation: ±10 % Max. allowable frequency fluctuation: ±2 %		
Power Consumption	Maximum	1,231 W or less	1,221 W or less	1,233 W or less
	During Printing	405 W	420 W	477 W
	During Standby	69 W	70 W	79 W
	During Sleep Mode	7 W	7 W	7 W
	Power Off	0 W	0 W	0 W

Item		Description		
		FS-C5100DN	FS-C5200DN	FS-C5300DN
Operating Noise <sup>††</sup>	During Printing	LpA = 53 dB (A)		
	During Standby	LpA = 36 dB (A)		
	During Sleep Mode	immeasurably low		
Dimensions (W x D x H)		345 × 518 × 455 mm 13-5/8 × 18-1/2 × 17-9/10"	345 × 518 × 480 mm 13-5/8 × 20-2/5 × 18-9/10"	
Weight		Approx. 28 kg (61 lbs)	Approx. 29 kg (64 lbs)	Approx. 29.5 kg (65 lbs)

†. When using **CUSTOM 1** (to 8), use the MP tray for paper sizes smaller than 105 × 148 mm (4 1/8 × 5 13/16 inches). The MP tray can be used with paper sizes over 70 × 138 mm (2 3/4 × 5 7/16 inches).

††. Sound pressure level at bystander position [front] in accordance with EN ISO 7779.



**We recommend the use of our own brand supplies.**  
**We will not be liable for any damage caused by the use of third party supplies in this machine.**



## KYOCERA MITA AMERICA, INC.

### **Headquarters:**

225 Sand Road,  
Fairfield, New Jersey 07004-0008  
TEL : (973) 808-8444  
FAX : (973) 882-6000

### **New York Branch:**

1410 Broadway 23rd floor  
New York, NY 10018  
TEL : (917) 286-5400  
FAX : (917) 286-5402

### **Northeastern Region:**

225 Sand Road,  
Fairfield, New Jersey 07004-0008  
TEL : (973) 808-8444  
FAX : (973) 882-4401

### **Midwestern Region:**

201 Hansen Court Suite 119  
Wood Dale, Illinois 60191  
TEL : (630) 238-9982  
FAX : (630) 238-9487

### **Western Region:**

14101 Alton Parkway,  
Irvine, California 92618-7006  
TEL : (949) 457-9000  
FAX : (949) 457-9119

### **Southeastern Region:**

1500 Oakbrook Drive,  
Norcross, Georgia 30093  
TEL : (770) 729-9786  
FAX : (770) 729-9873

### **Southwestern Region:**

2825 West Story Road,  
Irving, Texas 75038-5299  
TEL : (972) 550-8987  
FAX : (972) 252-9786

### **National Operation Center & National Training Center:**

2825 West Story Road,  
Irving, Texas 75038-5299  
TEL : (972) 659-0055  
FAX : (972) 570-5816

### **Latin America Division:**

8240 N.W. 52nd. Terrace Dawson Building,  
Suite 108 Miami, Florida 33166  
TEL : (305) 421-6640  
FAX : (305) 421-6666

## KYOCERA MITA CANADA, LTD.

6120 Kestrel Road, Mississauga,  
Ontario L5T 1S8, Canada  
TEL : (905) 670-4425  
FAX : (905) 670-8116

## KYOCERA MITA MEXICO, S.A. DE C.V.

Av. 16 de Septiembre #407  
Col. Santa Inés,  
Azcapotzalco México,  
D.F. 02130, México  
TEL : (55) 5383-2741  
FAX : (55) 5383-7804

## KYOCERA MITA EUROPE B.V.

Hoeksteen 40, 2132 MS Hoofddorp,  
The Netherlands  
Phone: +31.20.654.0000  
Home page: <http://www.kyoceramita-europe.com>  
Email: [info@kyoceramita-europe.com](mailto:info@kyoceramita-europe.com)

## KYOCERA MITA NEDERLAND B.V.

Beechavenue 25, 1119RA Schiphol-Rijk  
The Netherlands  
Phone: +31.20.58.77.200

## KYOCERA MITA (UK) LTD

8 Beacontree Plaza  
Gillette Way Reading Berks RG2 OBS,  
U.K.  
Phone: +44.1189.311.500

## KYOCERA MITA ITALIA S.p.A.

Via G. Verdi, 89 / 91, 20063 Cernusco s/N  
Milano, Italy  
Phone: +39.02.92179.1

## S.A. KYOCERA MITA BELGIUM N.V.

Hermesstraat 8A, 1930 Zaventem,  
Belgium  
Phone: +32.2.720.9270

## KYOCERA MITA FRANCE S.A.

Parc Les Algorithmes Saint Aubin  
91194 GIF-SUR-YVETTE,  
France  
Phone: +33.1.6985.2600

## KYOCERA MITA ESPAÑA S.A.

Edificio Kyocera, Avda de Manacor No. 2,  
28290 Las Matas (Madrid),  
Spain  
Phone: +34.91.631.8392

## KYOCERA MITA FINLAND OY

Kirvesmiehenkatu 4, 00880 Helsinki,  
Finland  
Phone: +358.9.4780.5200

## KYOCERA MITA (SCHWEIZ)

Hohlstrasse 614, 8048 Zürich  
Switzerland  
Phone: +41.1.908.4949

## KYOCERA MITA DEUTSCHLAND GMBH

Otto-Hahn-Str. 12 D-40670 Meerbusch,  
Germany  
Phone: +49.2159.918.0

## KYOCERA MITA GMBH AUSTRIA

Eduard-Kittenberger-Gasse 95,  
1230 Wien,  
Austria  
Phone: +43.1.86338.210

## KYOCERA MITA SVENSKA AB

Esbogatan 16B 164 75 Kista,  
Sweden  
Phone: +46.8.546.55000

## KYOCERA MITA NORGE

Postboks 150 Oppsal, NO 0619 Oslo  
Olaf Helsetsvet 6, NO 0694 Oslo,  
Norway  
Phone: +47.22.62.73.00

## KYOCERA MITA DANMARK A/S

Ejby Industrivej 1, DK-2600 Glostrup,  
Denmark  
Phone: +45.5687.1100

## KYOCERA MITA PORTUGAL LDA.

Rua do Centro Cultural, 41 (Alvalade) 1700-106 Lisbon,  
Portugal  
Phone: +351.21.842.9100

## KYOCERA MITA SOUTH AFRICA (PTY) LTD.

527 Kyalami Boulevard,  
Kyalami Business Park Midrand,  
South Africa  
Phone: +27.(0)11.540.2600

## KYOCERA MITA AMERICA, INC.

### Headquarters:

225 Sand Road,  
Fairfield, New Jersey 07004-0008,  
U.S.A.  
Phone: (973) 808-8444

## KYOCERA MITA AUSTRALIA PTY. LTD.

Level 3, 6-10 Talavera Road, North Ryde,  
N.S.W. 2113 Australia  
Phone: (02) 9888-9999

## KYOCERA MITA NEW ZEALAND LTD.

1-3 Parkhead Place, Albany  
P.O. Box 302 125 NHPC, Auckland,  
New Zealand  
Phone: (09) 415-4517

## KYOCERA MITA (THAILAND) CORP., LTD.

9/209 Ratchada-Prachachem Road,  
Bang Sue, Bangkok 10800, Thailand  
Phone: (02) 586-0320

## KYOCERA MITA SINGAPORE PTE LTD.

121 Genting Lane, 3rd Level,  
Singapore 349572  
Phone: 67418733

## KYOCERA MITA HONG KONG LIMITED

11/F., Mita Centre,  
552-566, Castle Peak Road,  
Tsuen Wan, New Territories,  
Hong Kong  
Phone: 24297422

## KYOCERA MITA TAIWAN Corporation.

7F-1~2, No.41, Lane 221, Gangchi Rd.  
Neihu District, Taipei, Taiwan, 114. R.O.C.  
Phone: (02) 87511560

## KYOCERA MITA Corporation

2-28, 1-chome, Tamatsukuri, Chuo-ku  
Osaka 540-8585, Japan  
Phone: (06) 6764-3555  
<http://www.kyoceramita.com>

