



Adding Fonts in Windows®

Installation Instructions

Downloading from the CD

The following instructions are for manually downloading fonts from a compact disc (CD) to your computer's font directory.

1. Turn On (I) your computer and allow it to boot up to your normal home page.



Note • For Windows NT 4.0, 2000, XP, and Server 2003, you must be an administrator to add or remove fonts.


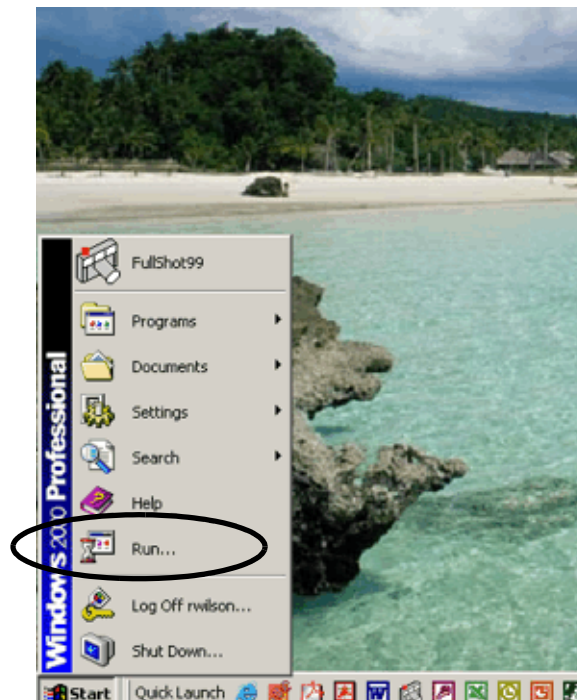
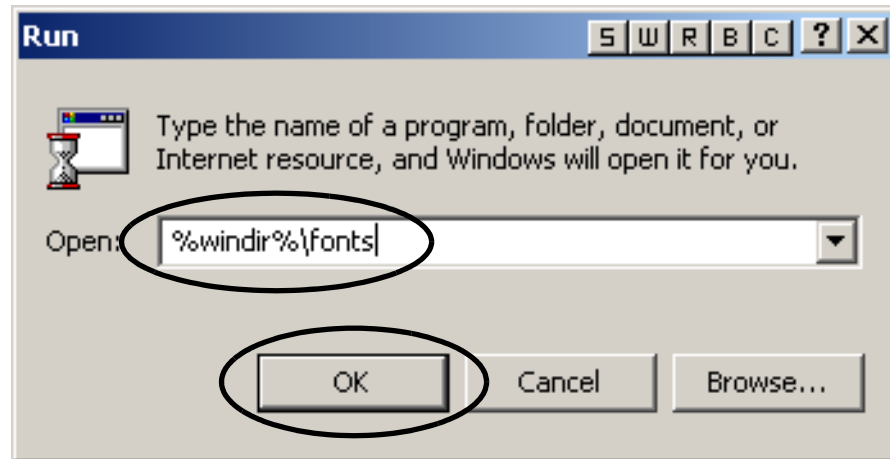
2. Insert the CD into your computer.
3. Click  on your desktop, and then click **Run**.

Figure 1 • Select Run



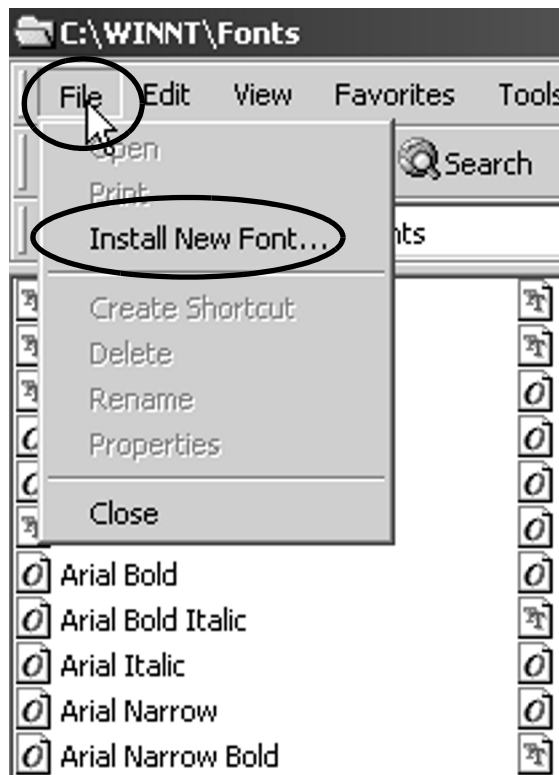
4. Type `%windir%\fonts`, and then click **OK**.
The Fonts directory opens (see [Figure 3](#)).

Figure 2 • Run Window



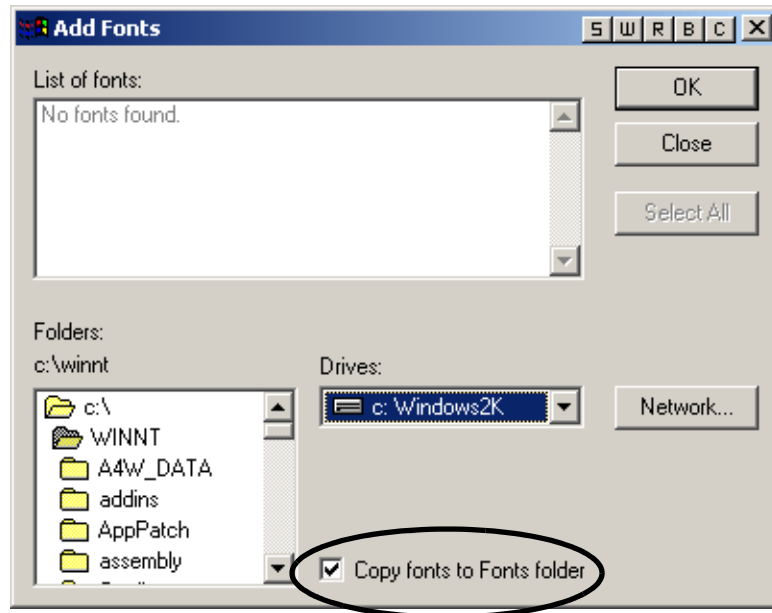
5. See [Figure 3](#), On the file menu, click **Install New Font**.

Figure 3 • Font Directory



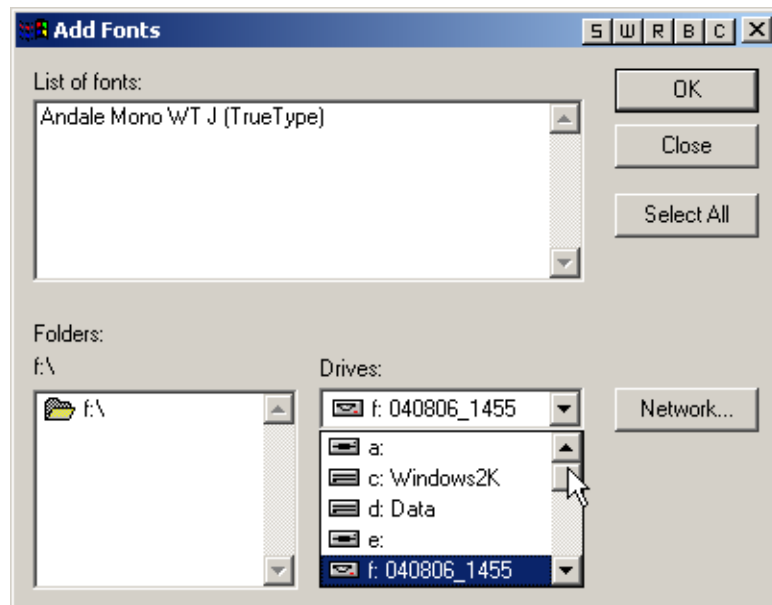
6. See [Figure 4](#). Select **Copy Fonts To Fonts Folder** check box.

Figure 4 • Copy Fonts to Fonts Folder



7. See [Figure 5](#). In the drives box, click on the drive for your CD-ROM.

Figure 5 • Select Drive



8. Install the fonts.

If you want to install...	Then...
A single font	a. Double click on the font you want to install and it will install automatically
All fonts on the CD	a. Click Select All , and then click OK .
Some of the fonts on the CD	a. Choose the ones you want install by holding down CTRL while clicking on the ones you want to, and then click OK .