

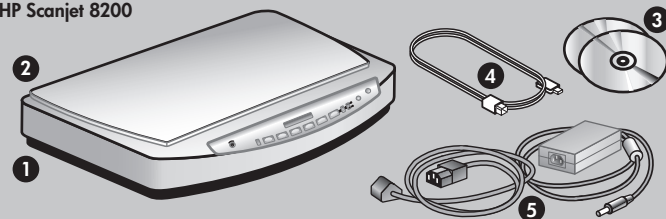
hp scanjet 8200 series

setup

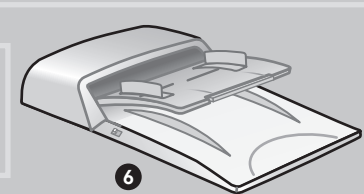
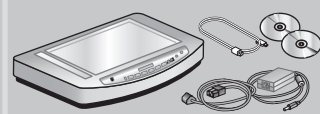


1

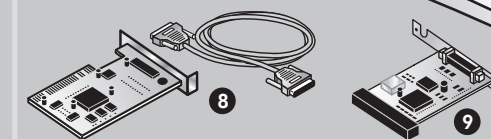
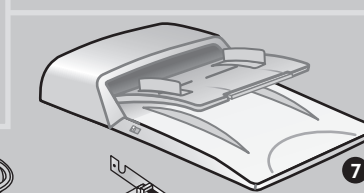
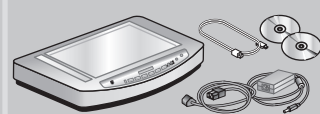
HP Scanjet 8200



HP Scanjet 8250



HP Scanjet 8290



check the box contents

HP Scanjet 8200

- 1 HP Scanjet digital flatbed scanner
- 2 Scanner lid with built-in Transparent Materials Adapter (TMA)
- 3 One or more CDs
- 4 Hi-Speed USB cable
- 5 Power cable and AC adapter (two pieces)

HP Scanjet 8250*

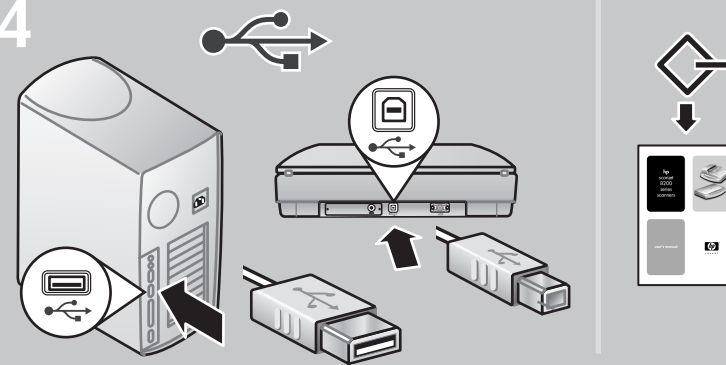
- Everything except the lid in the 8200 plus:
- 6 15 page-per-minute Automatic Document Feeder (ADF) with built-in Transparent Materials Adapter (TMA)

HP Scanjet 8290

- Everything except the lid in the 8200 plus:
- 7 25 page-per-minute Automatic Document Feeder (ADF) with built-in Transparent Materials Adapter (TMA)
 - 8 SCSI kit (contains SCSI cable, SCSI card for PC, and software CD)
 - 9 SCSI module for scanner

* Latin America model 8250 contains the SCSI kit and SCSI module

4



connect the scanner to the computer

Choose the attachment type: Hi-Speed USB or SCSI.*

Connect with Hi-SpeedUSB

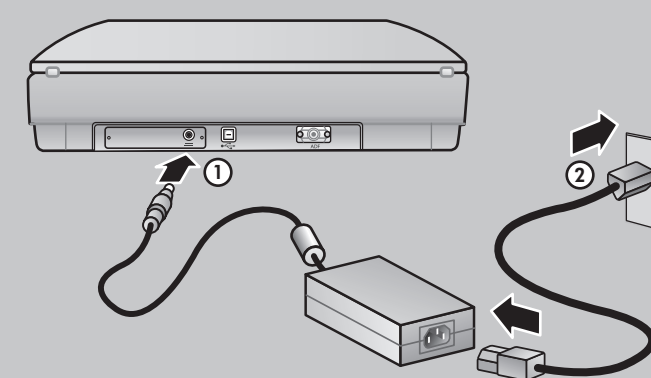
Connect the Hi-Speed USB cable between the Hi-Speed USB port on the scanner and the Hi-Speed USB port on the computer.

or

Connect with SCSI

*Refer to Appendix A in the User's Manual.

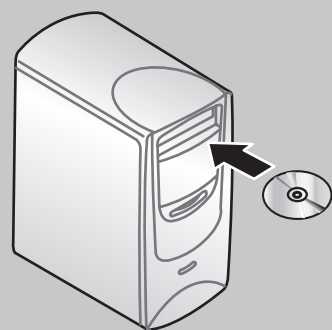
5



connect the power

1. Connect the power adapter cable to the power port on the scanner.
2. Connect one end of the power cable to the power adapter, and the other end to a surge protector or a grounded wall outlet.

2



install the software

1. Uninstall any previous versions of HP scanning software.
2. Close all programs on the computer.
3. Locate the HP Photo & Imaging software CD that is appropriate for your language and operating system.
4. Insert the CD into the computer.

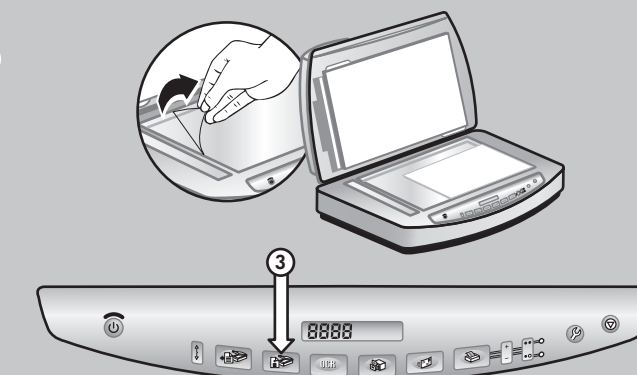
Windows

Follow the instructions on the screen. Or, if the installation program does not start automatically: On the Start menu, click **Run**, and type: x:\setup.exe (where x is the letter of the CD drive).

Macintosh

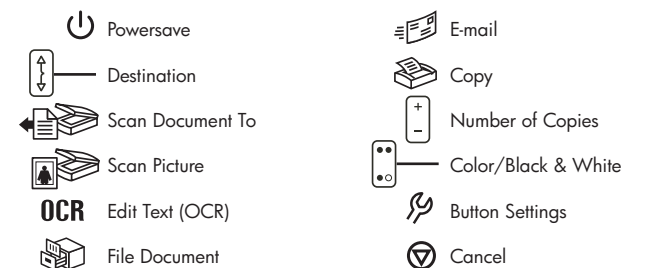
Double-click the installer icon on the CD and follow the instructions.

6

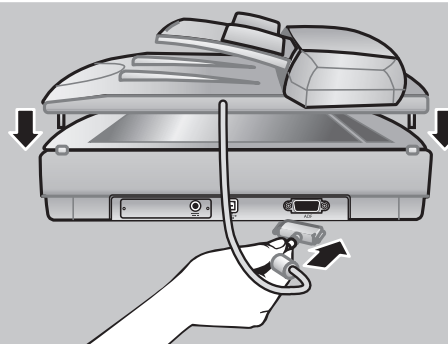


start scanning

1. Remove the protective film from the scanner glass.
2. Place a picture face down on the scanner glass and close the lid.
3. Press the **Scan Picture** button.



3



attach the scanner lid

1. Insert the hinges on the scanner lid or ADF into the hinge slots on the back of the scanner.
2. Connect the accessories cable to the ADF/TMA port on the back of the scanner.

7

www.scanjet.hp.com
www.hp.com/support
www.shopping.hp.com (U.S. only)
www.hp.com (worldwide)

find help and support

¥ For information on installation problems, customer support, and how to use the scanner, see the User's Manual.

¥ Visit these websites:

www.scanjet.hp.com for product updates, promotions and scanning tips

www.hp.com/support for customer support

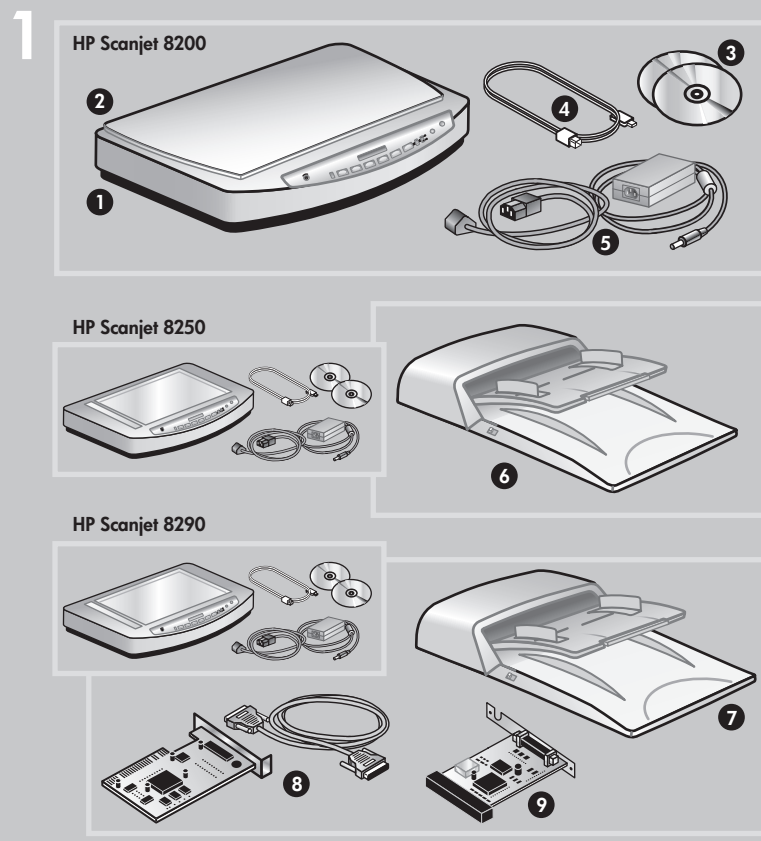
www.shopping.hp.com (U.S. only) or www.hp.com (worldwide) for ordering HP accessories, supplies, and products



C9930-90112

hp scanjet 8200 系列

安裝



檢查包裝盒內物品

HP Scanjet 8200

- 1 HP Scanjet 數位平台式掃描器
- 2 具有內建透明材料配接器 (TMA) 的掃描器蓋板
- 3 一張或多張光碟
- 4 高速 USB 纜線
- 5 電源線和交流電變壓器 (兩件)

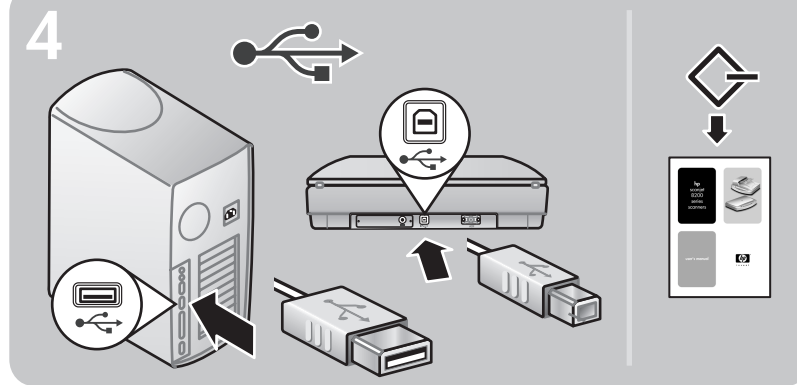
HP Scanjet 8250*

- 除了沒有 8200 型的蓋板，其他均相同，另外還包括：
- 6 每分鐘可送紙 15 頁的自動文件送紙器 (ADF)，具有內建透明材料配接器 (TMA)

HP Scanjet 8290

- 除了沒有 8200 型的蓋板，其他均相同，另外還包括：
- 7 每分鐘可送紙 25 頁的自動文件送紙器 (ADF)，具有內建透明材料配接器 (TMA)
 - 8 SCSI 套件 (包含 SCSI 纜線、適用於 PC 的 SCSI 卡以及軟體光碟)
 - 9 適用於掃描器的 SCSI 模組

* 拉丁美洲型號 8250 包含 SCSI 套件以及 SCSI 模組



將掃描器連接至電腦

選擇連接類型：高速 USB 或 SCSI。*

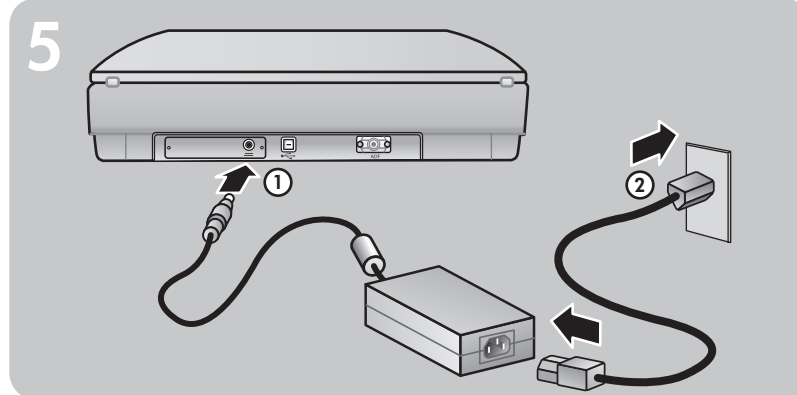
高速 USB 連接

將高速 USB 纜線連接至掃描器的高速 USB 連接埠和電腦的高速 USB 連接埠。

或者

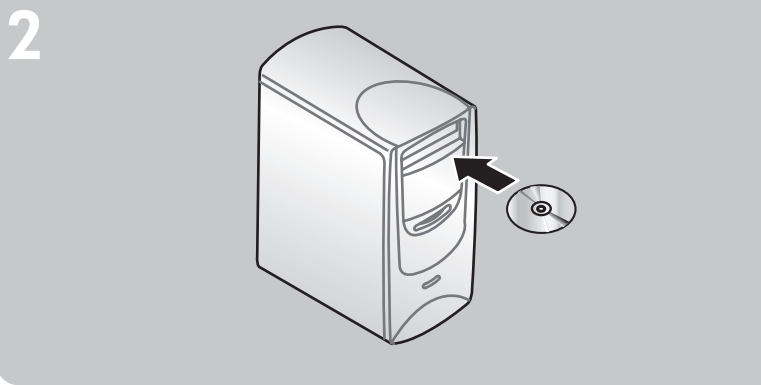
SCSI 連接

*請參閱《使用者手冊》中的附錄 A。



連接電源

1. 將變壓器纜線連接至掃描器的電源連接埠。
2. 將電源線的一端插入變壓器，另一端插入電湧保護器或正確接地的牆上插座。



安裝軟體

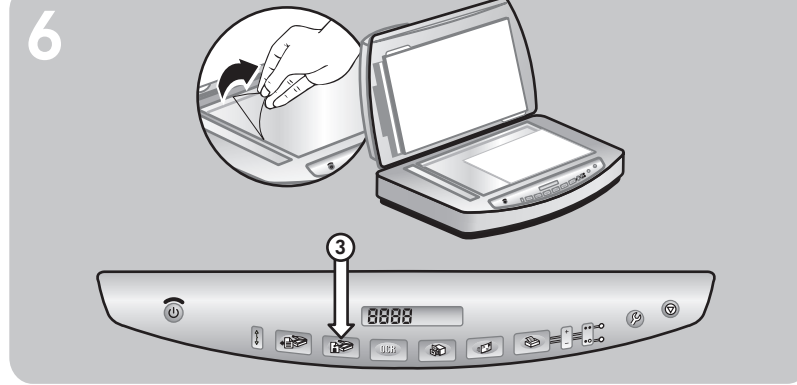
1. 解除安裝所有的舊版 HP 掃描軟體。
2. 關閉電腦中所有已開啟的程式。
3. 找到適合您的語言和作業系統的 HP 相片和影像軟體光碟片。
4. 將光碟插入電腦。

Windows

按照螢幕上的指示執行。或者，若安裝程式未自動啟動：在「開始」功能表上，按一下**執行**，然後鍵入：x:setup.exe (此處 x 為光碟機的字母代號)。

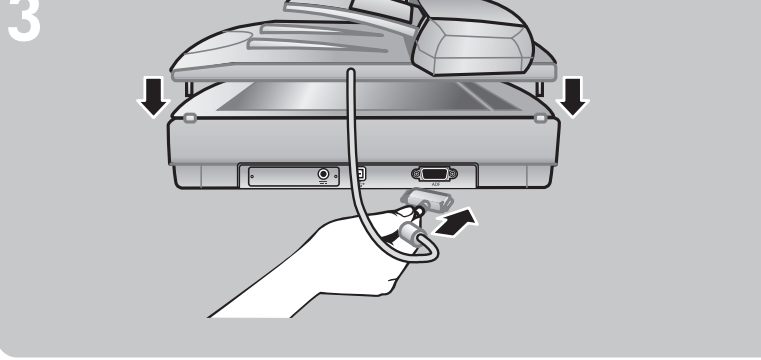
Macintosh

按兩下光碟上的安裝程式圖示，然後按照指示執行。



開始掃描

1. 從掃描器玻璃板上取下保護膜。
2. 將相片正面朝下放置在掃描器玻璃板上並合上蓋板。
3. 按下**掃描相片**按鈕。



連接瞄器蓋板

1. 將掃描器蓋板或 ADF 上的鉸鏈插入掃描器背面的鉸鏈插槽內。
2. 將配件纜線插入掃描器背面的 ADF/TMA 連接埠。



尋找幫助和支援

- 如需有關安裝問題、客戶支援以及如何使用掃描器的資訊，請參閱《使用者手冊》。
- 請造訪以下網站：
 - www.scanjet.hp.com，尋找關於產品更新、促銷以及掃描提示的資訊
 - www.hp.com/support，尋找關於客戶支援的資訊
 - www.shopping.hp.com (僅限美國) 或 www.hp.com (世界各地)，尋找關於訂購 HP 配件、耗材以及產品的資訊