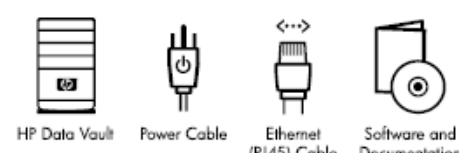




# DATA VAULT SETUP POSTER ENGLISH



## What's Inside?

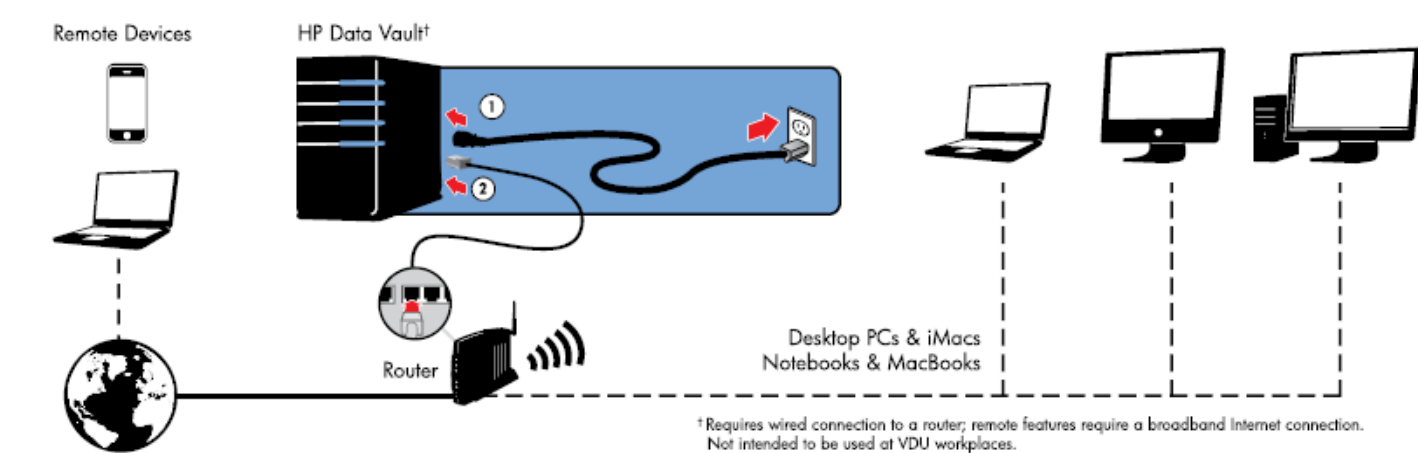


## Before you begin, you will need

- One or more computers running Microsoft Windows® Vista, Windows® XP, Windows® MCE, or Mac® OS X 10.5 or later\*
- A router with DHCP enabled to provide an automatic IP address to the device
- A broadband connection, such as DSL or cable, is required for remote access functionality
- 100 Mbps to 1000 Mbps (Gigabit Ethernet) wired network connection

\*See the online help for a detailed list of supported operating systems.

## Set up your HP Data Vault



**IMPORTANT** Open the HP Data Vault door and remove the foam packaging before connecting the device to your network and turning it on.

- 1 Plug the power cord into the device and the other end into an electrical outlet.
- 2 Connect one end of the Ethernet cable to the device and the other end to an available Ethernet port on your router.
- 3 Press the Power button on the back of the device.

The device will take approximately 60 seconds to start up. The LED indicator lights blink and change color throughout the startup process. Wait for all of the device LED lights to be pulsating aqua white before proceeding with the software installation.

Note: Firewall and anti-virus software installed on your computer may prevent the computer from locating the HP Data Vault on your network. To ensure open communication between the computer and the device, complete the following steps prior to running the Software Installation Disc:

- Open the firewall and anti-virus software and update the trusted programs list
- Verify that both applications are set to "Learn" new programs
- Install any updates for the firewall or anti-virus software

## Install the software on your first computer



The first installation must be on a Windows computer. Subsequent installations can be on a Windows or Mac computer.

To install the software, you must also have administrative privileges. Complete the following instructions to add administrative privileges to a user account on your computer.

### WINDOWS® VISTA

- Click **Start, Control Panel**, and then **User Accounts and Family Safety**

### WINDOWS® XP

- Click **Start, Control Panel**, and then double-click **User Accounts**

### MAC® OS X 10.5 OR LATER

- Click **System Preferences, Accounts**, and check **Allow user to administer this computer**

## IMPORTANT

If required, HP Update, Windows Installer 3.1, and .NET 2.0 or later software may be installed. These installations may restart your computer and take several minutes.

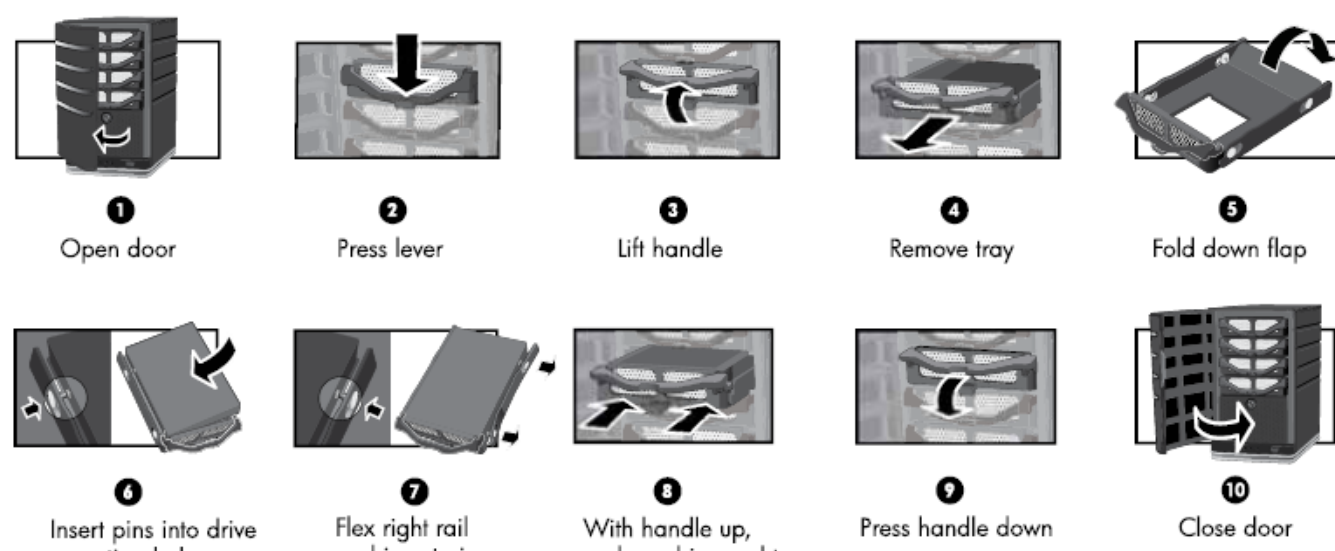
Complete the software installation:

- 1 Insert the Software Installation Disc into a network computer running Windows.
- 2 Follow the instructions on the computer to install the HP Data Vault.
- 3 Microsoft encourages you to accept their recommended settings for Windows Update and Customer Experience settings.
- 4 Enter your Windows Home Server password to logon once the installation is complete.

Repeat the software installation on each network computer running either Windows® or Mac® OS X 10.5 or later.

**CONGRATULATIONS! You are ready to Start Using Your HP Data Vault.**

## Adding a SATA Drive



NOTE: Within a few seconds the light bar for the new hard drive pulsates aqua white.

## Adding the Drive to Server Storage

**CAUTION** When adding a hard drive to server storage, the hard drive is formatted and any data will be lost. Back up any important files that are on the hard drive before adding it to server storage.

Complete the software installation:

- 1 At the computer, double-click the Windows Home Server icon in the system tray.
- 2 Log on to the Windows Home Server Console.
- 3 Click the Server Storage tab.
- 4 Select the drive and click Add.
- 5 Follow the instructions in the Add a Drive wizard.



Please visit [www.hp.com/support](http://www.hp.com/support) for additional information and technical support. For warranty and support information, see the Warranty and Support Guide.pdf on the Software Installation Disc.

