

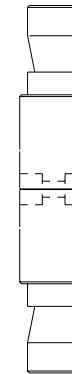
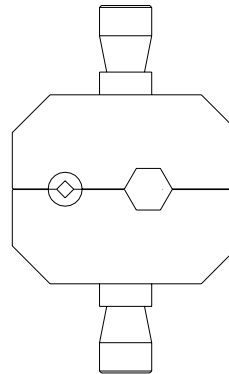
Area of 1.6mm SQUARE Crimp
is 2.56 Sq. mm (0.1008 Sq")

0.98


0.97mm Hex
flat width

Area of 1.69mm HEX Crimp
is 2.604 Sq. mm (0.1025 Sq")
Area = 6x(0.895x0.97/2)

Ø1.96 hex-circle
peak-diameter



MATERIAL Tool-Steel
ALLOY TOH-Hardened
EST. AREA xxx mm
EST. WEIGHT 44 gms
EST. PERIPHERY EXT: xxx mm TOT: xxx mm
TOLERANCE 0.00mm ±0.1mm 00.0mm ±0.25mm 0000mm ±0.5mm 0-600mm ±0.1mm > 600mm ±0.5mm BS1474:1987 APPLIES UNLESS OTHERWISE SPECIFIED
JOB No. 3000

 CASA Modular Systems P.O. BOX 38-828, WELLINGTON, NEW ZEALAND TELEPHONE : (64-4) 9393 777 FACSIMILE : (64-4) 9393 778	CUSTOMER : CASA Modular Systems				SIZE	DRAWING Reference No.	ISSUE
	DESCRIPTION : Crimp DIE-SET for RG-58 etc.				A4	76Z-0-3-1NZ	A
DRAWN : AWD		DATE : 24/02/10	APPROVED : ?	DWG. SCALE : 1:1	© COPYRIGHT : CASA Modular Systems ALL RIGHTS RESERVED		