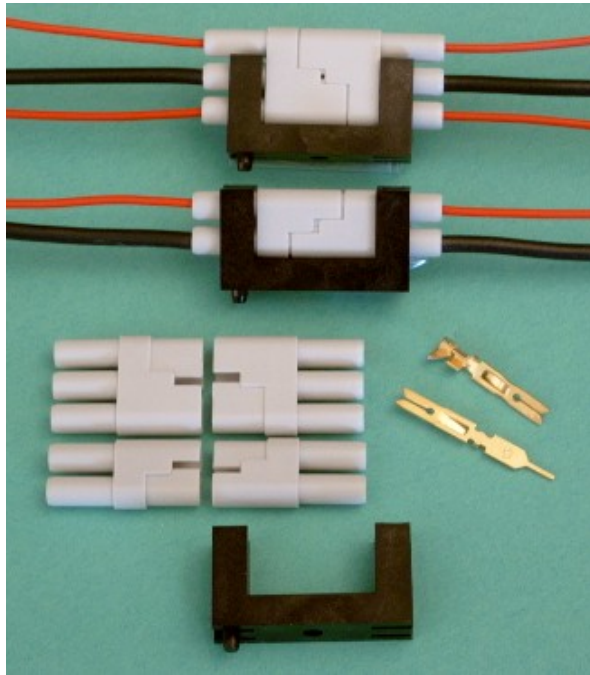


520 Series Panel Connector



Part Numbers

520-210-002	2 circuit housing
520-210-003	3 circuit housing
520-220-001	Retention clip

Contact code (order separately):

516-290-500	Wire hole
516-290-542	Wire wrap (0.61x1.27x14.4mm)
516-290-520	PCB tail
516-290-590	Loose crimp contacts
516-290-591	Crimp contacts on reel (1,800)

Prices on request for:

1. Housings supplied with contacts assembled
2. Housings with cable tails crimped & assembled

FEATURES

- Utilises EDAC gold-plated, hermaphroditic, contacts producing ultra-reliable connection with four gas-tight mating surfaces: A top quality, yet highly cost-effective, interconnect product.
- Board mount or in-line contact tail options.
- Identical insulator for plug and receptacle enabling one part number to be ordered/stocked
- 2 or 3 way options.
- Clip available to neatly secure mated connector to panel when used in-line.

SPECIFICATIONS

- **Materials:**
Housing and locking clip – Glass-filled thermoplastic
Contacts – Phosphor bronze alloy, all-over gold plate to 10u"
- **Electrical**
Contact rating – 8.5 amperes
Contact resistance – 6 milliohms max.
Insulation resistance – 5,000 megohms min.
Voltage proof – 2,500 volts R.M.S. sea level

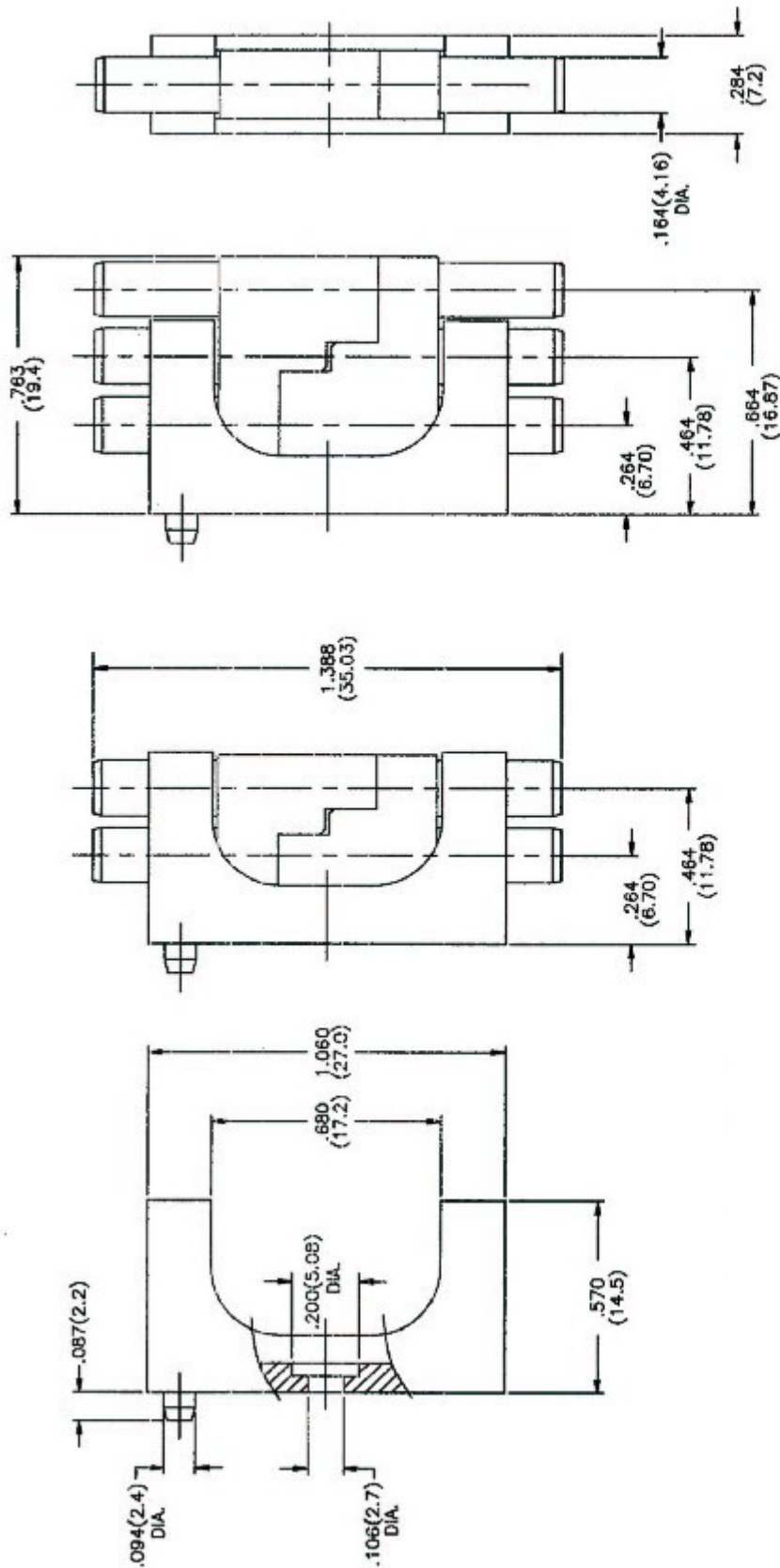
EDAC (Europe) Ltd., Brick Close, Kiln Farm,
Milton Keynes, MK11 3JB, United Kingdom

Tel: +44 (0) 1908 569333 Fax: +44 (0) 1908 569444

sales@edac.co.uk

EDAC (Europe) 

www.edac.net



MATERIALS:

HOUSING AND LOCKING CLIP: THERMOPLASTIC GLASS FILLED
CONTACTS: PHOSPHOR BRONZE ALLOY CA-510

ELECTRICAL SPECIFICATIONS

CONTACT RATING: 8.5 AMPERES
CONTACT RESISTANCE: 6 MILLIOHMS MAX.
INSULATION RESISTANCE: 5000 MEGOHMS MIN.
VOLTAGE PROOF: 2500 VOLTS R.M.S SEA LEVEL

520 SERIES CABLE CONNECTOR		ACAD REFERENCE NO.	520SER
		DRAWN: F.BRIONES	DATE: FEB.21/0
		CHECKED:	DATE:
		SCALE: (IN C.A.D. 1:1) SHEET 1 OF 1	
		DRAWING NUMBER	
		520-002-000-001	
		ISSUE	
		5	

EDAC INC
TORONTO, ONTARIO
CANADA

THESE DRAWINGS AND SPECIFICATIONS
ARE THE PROPERTY OF EDAC INC. AND
SHALL NOT BE REPRODUCED OR COPIED
OR USED AS THE BASIS FOR THE
MANUFACTURE OR SALE OF APPARATUS
WITHOUT WRITTEN PERMISSION.

YOUR CONNECTION TO QUALITY & SERVICE