

Congratulations, you and your iMac
were made for each other.

Built-in iSight camera

Video chat with up to three friends anywhere in the world at the same time.

www.apple.com/imac

Mac Help  iSight



Front Row with Apple Remote

Enjoy movies, music, and photos from the comfort of your sofa.

www.apple.com/imac

Mac Help  Front Row



Dashboard widgets

Get up-to-date information instantly. View stocks, check the weather, track flights, and much more.

www.apple.com/macosx/overview

Mac Help  Dashboard



iMovie

Collect all your video in one library. Create and share movies in minutes.

www.apple.com/ilife/imovie

iMovie Help  movie



iPhoto

Organize all your photos with Events. Publish to a Web Gallery with a click.

www.apple.com/ilife/iphoto

iPhoto Help  photo

iLife '08



GarageBand

Create music by adding musicians to a virtual stage. Enhance your song to sound like a pro.

www.apple.com/ilife/garageband

GarageBand Help  record



iWeb

Create beautiful websites with photos, movies, blogs, podcasts, and dynamic web widgets.

www.apple.com/ilife/iweb

iWeb Help  website

Contents

Chapter 1: Ready, Set Up, Go

- 9 What's in the Box
- 10 Setting Up Your iMac
- 15 Putting Your iMac to Sleep or Shutting It Down

Chapter 2: Life with Your iMac

- 20 Basic Features of Your iMac
- 22 Other Features of Your iMac
- 24 Ports on Your iMac
- 26 Other Components of Your iMac
- 28 Getting Answers

Chapter 3: Boost Your Memory

- 33 Installing Additional Memory
- 38 Making Sure Your iMac Recognizes the New Memory

Chapter 4: Problem, Meet Solution

- 41 Problems That Prevent You from Using Your iMac
- 43 Using Apple Hardware Test
- 44 Problems with Your Internet Connection

- 46 Problems with AirPort Extreme Wireless Communication
- 47 Keeping Your Software Up to Date
- 48 When an Application Doesn't Respond
- 48 Reinstalling the Software That Came with Your iMac
- 50 Other Problems
- 51 Learning More, Service, and Support
- 53 Locating Your Product Serial Number

Chapter 5: Last, but Not Least

- 56 Safety Instructions for Setting Up and Using Your iMac
- 60 Avoid Hearing Damage
- 60 Understanding Ergonomics
- 62 Cleaning Your iMac
- 63 Carrying Your iMac
- 63 Apple and the Environment
- 64 Regulatory Compliance Information

Looking for Something?

- 70 Index

1

Ready, Set Up, Go

www.apple.com/imac

Mac Help  Migration Assistant

Your iMac is designed so that you can set it up quickly and start using it right away. If you have never used an iMac or are new to Macintosh computers, read this chapter for help getting started.

Important: Read all of the setup instructions and the safety information starting on page 55 before you plug your computer into a power outlet.

If you are an experienced user, you may already know enough to get started. Make sure you look over the information in Chapter 2, “Life with Your iMac,” to find out about the new features of this iMac.

Before you set up your iMac, remove any protective film from the outside of your computer.

What's in the Box

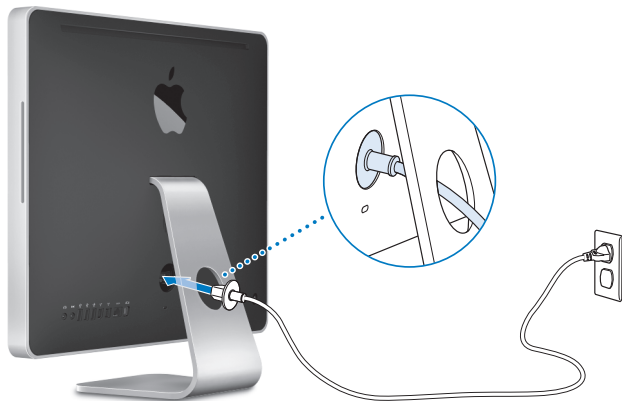
Your iMac comes with an Apple Keyboard, a Mighty Mouse, an Apple Remote, and an AC power cord.



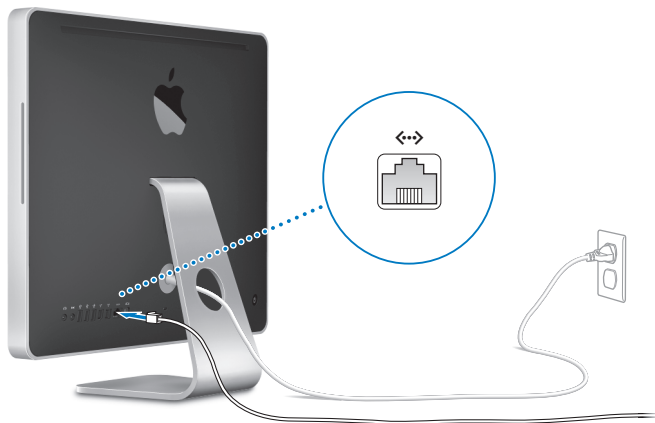
Setting Up Your iMac

Follow these steps to set up your iMac.

Step 1: Pass the power cord through the hole in the stand, plug it into the power port on the back of your iMac, and then plug it into a power outlet.



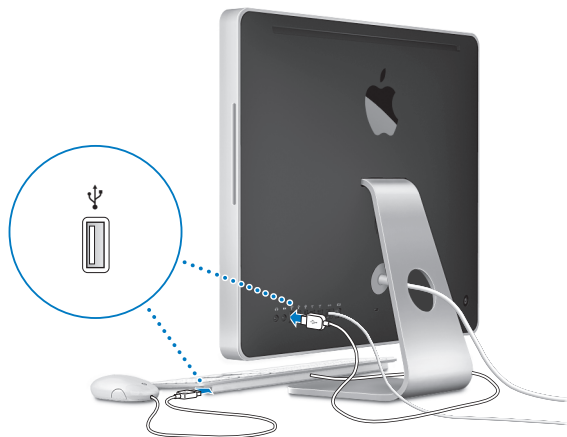
Step 2: To access the Internet over broadband or a network, connect one end of an Ethernet cable to your iMac and the other end to a cable modem, DSL modem, or network.



Note: Your iMac also comes with AirPort Extreme technology for wireless networking. For information about setting up a wireless connection, choose Help > Mac Help, and then choose Library > AirPort Help. Also see “Getting Answers” on page 28.

To use a dial-up connection, you need an external USB Modem, available for purchase from the online Apple Store at www.apple.com/store or from an Apple Authorized Reseller.

Step 3: Connect the keyboard and mouse cables.

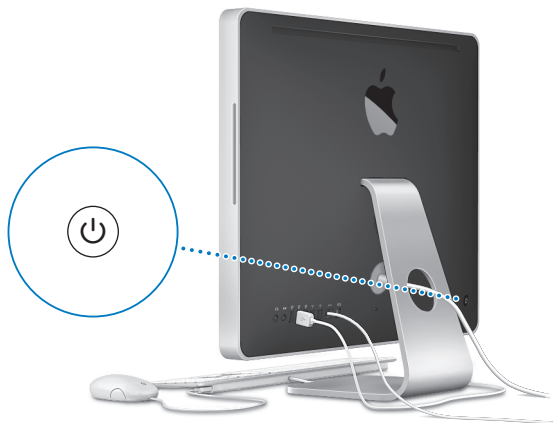


Using a Wireless Keyboard or Mouse

If you purchased an Apple Wireless Keyboard or a wireless Mighty Mouse with your iMac, follow the instructions that came with the keyboard and mouse to set them up.

Step 4: Press the power (⏻) button on the back to turn on your iMac.

You hear a tone when you turn on your iMac. After your iMac starts up, Setup Assistant opens automatically.



Step 5: Use Setup Assistant to configure your iMac.

The first time you turn on your iMac, Setup Assistant starts. Setup Assistant helps you enter your Internet and email information and set up a user account on your iMac. If you already have a Mac, Setup Assistant can help you automatically transfer files, applications, and other information from your previous Mac to your new iMac.

If you don't intend to keep or use your other Mac, it's best to deauthorize it from playing music, videos, or audiobooks that you've purchased from the iTunes Store. Deauthorizing a computer prevents any songs, videos, or audiobooks you've purchased from being played by someone else and frees up another authorization for use. For information about deauthorizing, choose iTunes Help from the Help menu in iTunes.

If you don't use Setup Assistant to transfer information when you first start up, you can do it later using Migration Assistant. Go to the Applications folder, open Utilities, and double-click Migration Assistant.

Step 6: Customize your desktop and set your preferences.

You can quickly make your desktop look the way you want using System Preferences. Choose Apple () > System Preferences from the menu bar. As you get to know your computer, explore System Preferences, your command center for most settings on your iMac. For more information, open Mac Help and search for "System Preferences" or for the specific preference you want to change.

Putting Your iMac to Sleep or Shutting It Down

When you finish working with your iMac, you can put it to sleep or shut it down.

Put Your iMac to Sleep

If you will be away from your iMac for less than a few days, put it to sleep. When your iMac is in sleep, its screen is dark. You can quickly wake your iMac and bypass the startup process.

To put your iMac to sleep, do one of the following:

- Choose Apple () > Sleep from the menu bar.
- Press the power (⏻) button on the back of your iMac.
- Choose Apple () > System Preferences, click Energy Saver, and set a sleep timer.
- Press and hold the Play/Pause (⏮) button on your Apple Remote for 3 seconds.

To wake your iMac, press the power (⏻) button, any key on the keyboard, or any button on the Apple Remote. When your iMac wakes from sleep, your applications, documents, and computer settings are exactly as you left them.

Shut Down Your iMac

If you won't be using your iMac for more than a few days, shut it down. Choose Apple () > Shut Down.


WARNING: Shut down your iMac before you unplug or move it. Moving your iMac while the hard disk is spinning can damage the hard disk, causing loss of data or the inability to start up from the hard disk.

To turn your iMac on again, press the power (⏻) button.

2

Life with Your iMac

www.apple.com/macosx/overview

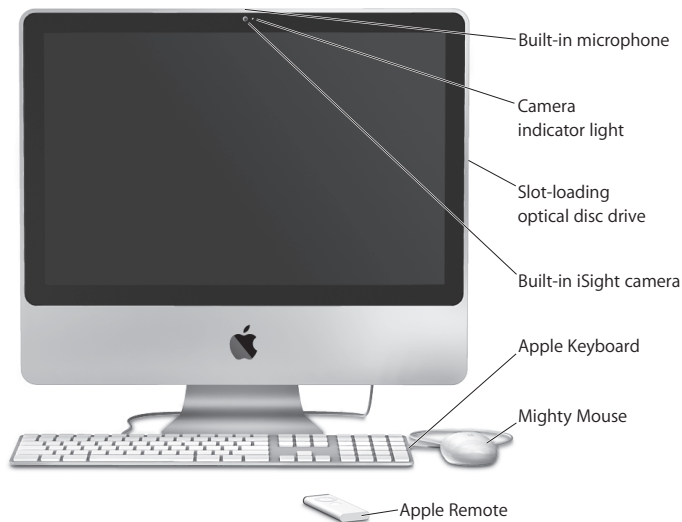
Mac Help  iLife

Read on for an overview of the features and ports of your iMac.

The Apple website at www.apple.com links you to the latest Apple news, free downloads, and online catalogs of software and hardware for your iMac.

You can also find the manuals for many Apple products and technical support for all Apple products on the Apple Support website at www.apple.com/support.

Basic Features of Your iMac



Built-in microphone

Record sounds directly on your iMac or talk with friends live over broadband using the included iChat AV application.

Camera indicator light

The camera indicator light glows when the iSight camera is operating.

Slot-loading optical disc drive

Your SuperDrive can read standard-size CD-ROM, photo CD, audio, and DVD discs. It can write music, documents, and other files to standard-size CD-R, CD-RW, DVD±R, DVD±RW, and DVD±R Double Layer (DL) discs. To insert a disc, use a continuous motion to push it into the drive. Keep pushing the disc until your fingers touch the side of your iMac.

Built-in iSight camera

Videoconference with friends and family over broadband using the iChat AV application, snap pictures with the Photo Booth application, or capture video with iMovie.

Apple Keyboard

Use the function keys and numeric keypad to work efficiently.

Mighty Mouse








Use the programmable, multibutton mouse with its innovative scroll ball to click, squeeze, and scroll through documents, web pages, and other content.

Apple Remote

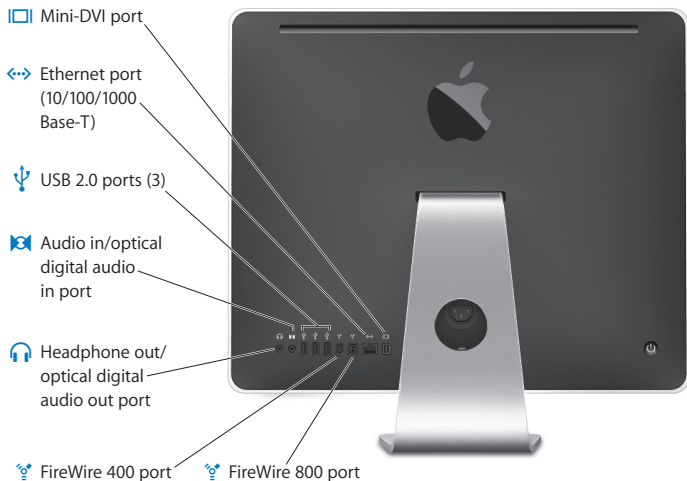
Control your music, photos, and videos from across the room with the easy-to-use Apple Remote and Front Row.

Other Features of Your iMac



	Built-in stereo speakers Listen to music, movies, games, and multimedia.
	Dashboard Open Dashboard to access your widgets and get information on the weather, stocks, and more.
	Expose All Windows key Open Exposé for quick access to your open windows.
	Brightness controls Dim or increase the brightness of your iMac display.
	USB ports Use the two USB 2.0 ports to connect a mouse and to sync your iPod or digital camera.
	Built-in infrared (IR) receiver Works seamlessly with your Apple Remote for wireless control.
	Media controls Rewind (⏮), play or pause (⏮⏭), or fast-forward (⏭) a song, movie, or slideshow.
	Volume controls Mute (⏸), decrease (⏮) or increase (⏭) the volume of sound coming from the speakers or headphone port. on your iMac.
	Media Eject key Press and hold the Media Eject (⏏) key to remove a disc.

Ports on Your iMac



**Mini-DVI video out port**

Use a Mini-DVI to DVI Adapter to connect your iMac to an Apple flat-panel display or other display that has a DVI connector. Use a Mini-DVI to VGA Adapter to connect to an external monitor that has a VGA connector. Use a Mini-DVI to Video Adapter for composite and S-video support to connect to a TV, VCR, or other video device. Adapters are available at www.apple.com/store.

**Ethernet port (10/100/1000Base-T)**

Connect to a high-speed 10/100/1000Base-T Ethernet network, connect a DSL or cable modem, or connect to another computer and transfer files. The Ethernet port automatically detects other Ethernet devices.

**Three USB 2.0 ports**

Connect an iPod, printer, disk drive, digital camera, joystick, modem, and more. You can also connect USB 1.1 devices. The Apple Keyboard also has two USB 2.0 ports.

**Audio in/optical digital audio in port**

Connect an external powered microphone or digital audio equipment. This port is also a S/PDIF stereo 3.5 mini-phono jack.

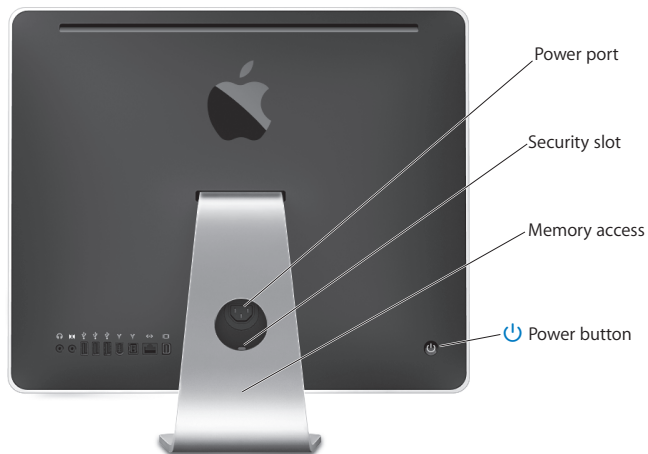
**Headphone out/optical digital audio out port**

Connect headphones, external powered speakers, or digital audio equipment. This port is also a S/PDIF stereo 3.5 mini-phono jack.

**Two FireWire ports (one FireWire 400 and one FireWire 800)**

Connect high-speed external devices, such as digital video camera or external storage. Each port provides up to 7 watts of power.

Other Components of Your iMac



Power port

Connect the power cord to your iMac.

Security slot

Attach a lock and cable to prevent theft (available at www.apple.com/store).

Memory access

Your iMac comes with at least 1 GB of memory. You can add more memory, up to a total of 4 GB (you can purchase memory at www.apple.com/store). See "Installing Additional Memory" on page 33.

**Power button**

Turn on your iMac or put it to sleep. Press and hold to restart your iMac during troubleshooting.

**AirPort Extreme wireless technology (inside)**

Connect to a wireless network using built-in AirPort Extreme technology.

**Bluetooth® 2.0+EDR wireless technology (inside)**

Connect wireless devices, such as Bluetooth mobile phones, PDAs, printers, the Apple Wireless Keyboard, and the wireless Mighty Mouse (you can purchase the Apple Wireless Keyboard or wireless Mighty Mouse at www.apple.com/store).

Getting Answers

Much more information about using your iMac is available in Mac Help and on the Internet at www.apple.com/support.

To open Mac Help:

- 1 Click the Finder icon in the Dock (the bar of icons along the edge of the screen).
- 2 Choose Help > Mac Help (click the Help menu in the menu bar and choose Mac Help).
- 3 Click in the search field, type a question, and press Return on your keyboard.

More Information

For more information about using your iMac, see the following:

To learn about	See
Installing memory	Chapter 3, “Boost Your Memory,” on page 31.
Troubleshooting your iMac if you have a problem	Chapter 4, “Problem, Meet Solution,” on page 39.
Finding service and support for your iMac	“Learning More, Service, and Support” on page 51. Or, see the Apple Support website at www.apple.com/support .
Using Mac OS X	The Mac OS X website at www.apple.com/macosx/overview . Or search for “Mac OS X” in Mac Help.
Moving from a PC to a Mac	How To Move To Mac at www.apple.com/macosx/switch . Or click “Switching from Windows” under Top Customer Issues on the Mac Help home page.
Using iLife applications	The iLife website at www.apple.com/ilife . Or open an iLife application and then open Help for the application and type a question in the search field.

To learn about	See
Changing System Preferences	Open System Preferences by choosing Apple () > System Preferences. Or search for “system preferences” in Mac Help.
Using the iSight camera	Search for “iSight” in Mac Help.
Using AirPort Extreme wireless technology	The AirPort Support page at www.apple.com/support/airport . Or open AirPort Help by clicking and holding the Home button at the top of a Mac Help page, and then selecting AirPort Help from the list.
Using Bluetooth wireless technology	The Bluetooth Support page at www.apple.com/support/bluetooth . Or open the Bluetooth File Exchange application, located in the Utilities folder within the Applications folder, and choose Help > Bluetooth Help.
Connecting a printer	Search for “printing” in Mac Help.
FireWire and USB connections	Search for “USB” or “FireWire” in Mac Help.
Connecting to the Internet	Search for “Internet” in Mac Help.
Connecting an external display	Search for “display port” in Mac Help.
Apple Remote	Search for “remote” in Mac Help.
Front Row	Search for “Front Row” in Mac Help.
Burning a CD or DVD	Search for “burn disc” in Mac Help.
Specifications	The Specifications page at www.apple.com/support/specs for standard technical specifications. Or open System Profiler by choosing Apple () > About This Mac from the menu bar and then clicking More Info.

3

Boost Your Memory

www.apple.com/store

Mac Help  RAM

Your iMac comes with at least 1 gigabyte (GB) of Double Data Rate 2 (DDR2) Synchronous Dynamic Random Access (SDRAM) memory installed. You can add 1 GB or 2 GB memory modules for a maximum of 4 GB of memory. Memory modules must meet the following specifications:

- Small Outline Dual Inline Memory Module (SO-DIMM) format
- 667 MHz, PC2-5300, DDR2 compliant (also referred to as DDR2 667)
- Unbuffered and unregistered

WARNING: Apple recommends that you have an Apple-certified technician install memory. Consult the service and support information that came with your iMac for information about how to contact Apple for service. If you attempt to install memory and damage your equipment, that damage isn't covered by the limited warranty on your iMac.

Installing Additional Memory

Your iMac has two memory slots. One is filled with at least a 1 GB memory module. You can add a memory module to the empty slot or remove the memory module in the filled slot to replace the installed memory. You can add 1 GB or 2 GB memory modules for a maximum of 4 GB of memory.

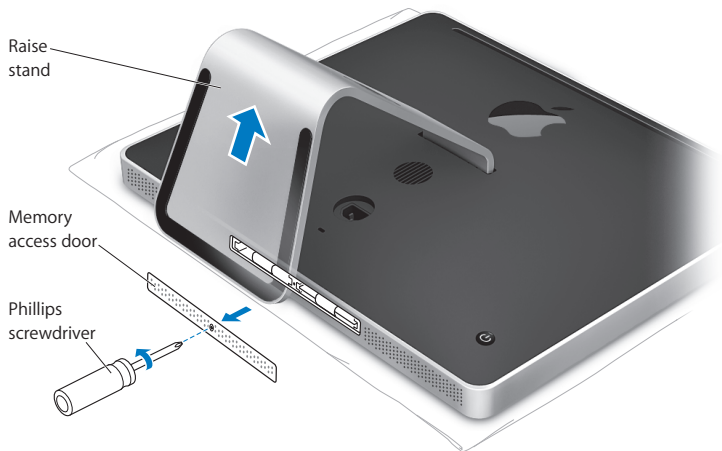
You can purchase additional Apple memory from an Apple Authorized Reseller, an Apple Store retail location, or the online Apple Store at www.apple.com/store.

WARNING: Always shut down your iMac and remove the power cord before installing memory. Do not attempt to install memory while your iMac is plugged in.

To install memory

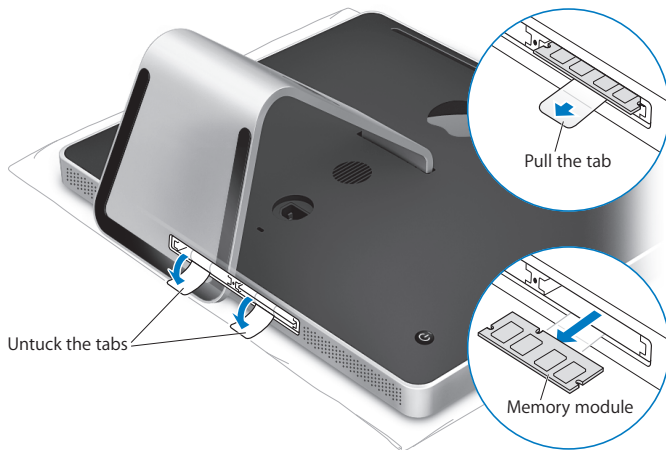
- 1 Turn your iMac off by choosing Apple (🍏) > Shut Down.
- 2 Disconnect all cables and the power cord from your iMac.
- 3 Place a soft, clean towel or cloth on your work surface. Hold the sides of your iMac and lay it down so that the screen is against the surface and the bottom is facing you.

- 4 Raise the stand and use a Phillips #2 screwdriver to loosen the captive screw on the memory access door by turning it counterclockwise.

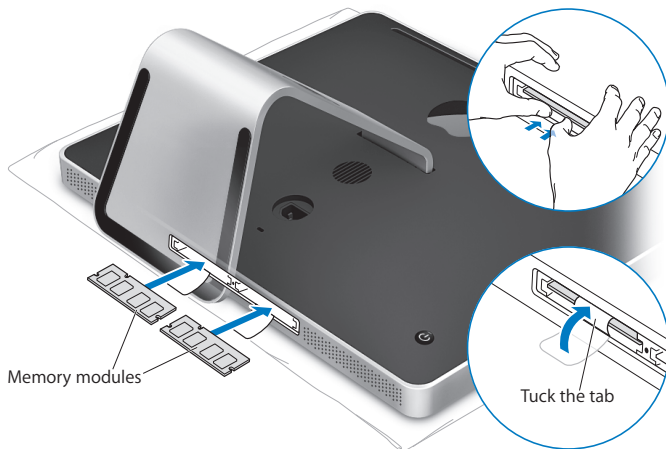


- 5 Remove the memory access door and set it aside.

- 6 Untuck the tabs in the memory compartment.
- 7 If you are replacing a memory module, untuck and then pull the tab to eject the installed memory module. Remove the memory module you want to replace.

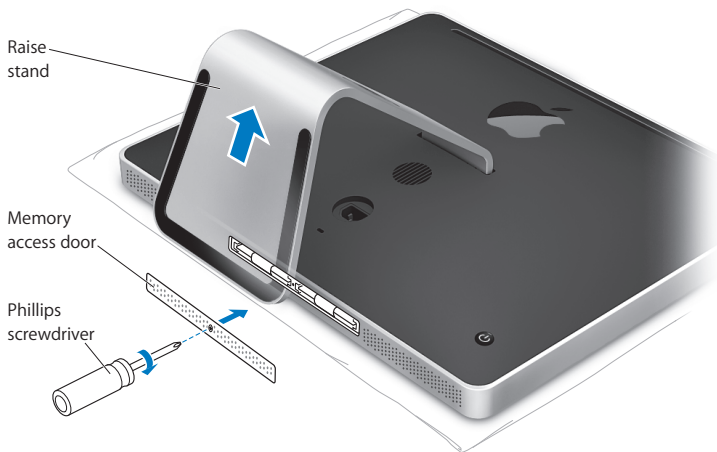


- 8 Insert the new memory module into the slot with the notch facing left as shown in the illustration.
- 9 Press the memory module firmly and evenly into the compartment. You'll hear a slight click when the memory module is seated correctly.
- 10 Tuck the tabs into the memory compartment.



- 11 Replace the memory access door using a Phillips #2 screwdriver to tighten the screw.

WARNING: Remember to replace the memory access door after you install memory. Your iMac won't function properly without the memory access door.




- 12 Holding both sides of your iMac, return it to a standing position, and then reconnect the cables and power cord.
- 13 Press the power (⏻) button on the back of your iMac to turn it on.

Making Sure Your iMac Recognizes the New Memory

After installing memory, check whether the computer recognizes the new memory.

To check the memory installed in your iMac:

- 1 Start up your iMac.
- 2 When you see the Mac OS desktop, choose Apple () > About This Mac.

You'll see the total amount of memory installed in your iMac. For a detailed view of the amount of memory installed, open System Profiler by clicking More Info.

If the memory you installed does not meet specifications (see page 32), your iMac will sound three tones every five seconds. If this happens, shut down your iMac and check the installation instructions again to make sure that the memory is compatible with your iMac and that it's installed correctly. If you still have problems, remove the memory and consult the support information that came with the memory or contact the vendor who provided the memory.

4

Problem, Meet Solution

www.apple.com/support

Mac Help  help

Occasionally you may have problems while working with your iMac. Read on to find some solutions to try when you have a problem. You can also find more troubleshooting information in Mac Help and on the iMac Support website at www.apple.com/support/imac.

If you experience a problem with your iMac, there is usually a simple and quick solution. If you encounter a problem, try to make a note of what you did before the problem occurred. This will help you narrow down the possible causes of the problem and then find the answers you need. Things to note include:

- The applications you were using when the problem occurred. Problems that occur only with a specific application may indicate that the application isn't compatible with the version of the Mac OS installed on your iMac.
- Any new hardware (such as additional memory or a peripheral) that you connected or installed.

WARNING: Do not attempt to open your iMac except to install memory. If your iMac needs service, see "Learning More, Service, and Support" on page 51 for information about how to contact an Apple Authorized Service Provider or Apple for service. Your iMac doesn't have any user-serviceable parts, except the memory.

Problems That Prevent You from Using Your iMac

If your iMac won't respond or the pointer won't move

- Make sure the mouse and keyboard are connected. Unplug and then plug in the connectors and make sure they are secure. If you have a wireless keyboard or mouse, make sure the batteries are fresh.
- Try to force problem applications to quit. Hold down the Option and Command (⌘) keys and press the Esc key. If a dialog appears, select the application and click Force Quit. Then save your work in any open applications and restart your iMac to be sure the problem is entirely cleared up.
- If you are unable to force the application to quit, press and hold the power (⏻) button on the back of your iMac for 5 or 6 seconds to shut down the computer. Unplug the power cord from the iMac. Then plug the power cord back in and press the power (⏻) button on your iMac to turn it on.

If the problem occurs frequently when you use a particular application, check with the application's manufacturer to see if the application is compatible with your iMac.

To get support and contact information for the software that came with your iMac, go to www.apple.com/guide.

If the problem occurs frequently, you may need to reinstall your system software. See “Reinstalling the Software That Came with Your iMac” on page 48.

If your iMac freezes during startup or you see a flashing question mark

- Wait a few seconds. If your iMac doesn't start up after a brief wait, shut it down by pressing and holding the power (⏻) button for 5 or 6 seconds, until your iMac shuts down. Then hold down the Option key and press the power (⏻) button again to start up your iMac. When your iMac starts up, click the hard disk icon and then click the right arrow.
- After your iMac starts up, open System Preferences and click Startup Disk. Select a local Mac OS X System folder.
- If the problem occurs frequently, you may need to use Disk Utility (on the Mac OS X Install Disc 1 that came with your iMac) or reinstall your system software (see "Reinstalling the Software That Came with Your iMac" on page 48).

If your iMac won't turn on or start up

- Make sure the power cord is plugged into your iMac and into a functioning power outlet.
- Press the power (⏻) button and immediately hold down the Command (⌘), Option, P, and R keys until you hear the startup sound a second time.
- If you recently installed memory, and your iMac sounds tones every five seconds, make sure that the memory is correctly installed and that it is compatible with your iMac. Check whether removing the memory you installed allows your iMac to start up (see page 33).
- Unplug the power cord and wait at least 30 seconds. Plug the power cord back in and press the power (⏻) button again to start up your iMac.
- If you are still unable to start up your iMac, see "Learning More, Service, and Support" on page 51 for information about contacting Apple for service.

Using Apple Hardware Test

You can use Apple Hardware Test to help determine if there is a problem with your iMac hardware.

To use Apple Hardware Test:

- 1 Disconnect all external devices from your iMac except the keyboard and mouse. If you have an Ethernet cable connected, disconnect it.
- 2 Restart your iMac while holding down the D key.
- 3 When the Apple Hardware Test chooser screen appears, select the language appropriate for your location.
- 4 Press the Return key or click the right arrow button.
- 5 When the Apple Hardware Test main screen appears (after about 45 seconds), follow the onscreen instructions.
- 6 Apple Hardware Test displays an error code if it detects a problem. Make a note of the error code before pursuing support options. If Apple Hardware Test doesn't detect a hardware failure, the problem may be with your software.

For more information, see the Apple Hardware Test Read Me file on the Mac OS X Install Disc 1.

Problems with Your Internet Connection

If you have trouble with your Internet connection, you can try the steps in this section starting with Network Diagnostics.

To use Network Diagnostics:

- 1 Choose Apple (🍏) > System Preferences.
- 2 Click Network and then click “Assist me.”
- 3 Click Diagnostics to open Network Diagnostics.
- 4 Follow the onscreen instructions.

If Network Diagnostics can’t resolve the problem, there may be a problem with the Internet service provider (ISP) you are trying to connect to, with an external device you are using to connect to your ISP, or with the server you are trying to access. You can also try the steps in the following sections.

Cable Modem, DSL, and LAN Internet Connections

Make sure all modem cables are fully plugged in. Check the modem power cord, the cable from the modem to the computer, and the cable from the modem to the wall jack. Also check the cables and power supplies for Ethernet hubs and routers.

Turn the modem off and on to reset the modem hardware.

Turn off your DSL or cable modem for a few minutes, and then turn it back on. Some ISPs recommend that you unplug the modem’s power cord. If your modem has a reset button, you can press it either before or after you turn the power off and on.

PPPoE Connections

If you are unable to connect to your Internet service provider using PPPoE, make sure you have entered the correct information in Network preferences.

Check System Preferences settings:

- 1 Choose Apple (🍏) > System Preferences.
- 2 Click Network.
- 3 Choose Network Port Configurations from the Show pop-up menu.
- 4 Drag Built-in Ethernet to the top of the Port Configurations list.
- 5 Choose Built-in Ethernet from the Show pop-up menu.
- 6 Click PPPoE.
- 7 Select "Connect using PPPoE."
- 8 Check the Account Name field to make sure you've entered the correct information from your ISP.
- 9 If you chose to save your password, retype it making sure it's correct.
- 10 Click TCP/IP. Make sure you've entered the correct information from your ISP in this pane.
- 11 Click Apply Now.

Network Connections

Make sure the Ethernet cable is plugged into your computer and into the network. Check the cables and power supplies to your Ethernet hubs and routers.

If you have two or more computers sharing an Internet connection, be sure that your network is set up properly. You need to know if your ISP provides only one IP address or if it provides multiple IP addresses, one for each computer.

If only one IP address is used, then you must have a router capable of sharing the connection, also known as network address translation (NAT) or “IP masquerading.” For setup information, check the documentation provided with your router or ask the person who set up your network. You can use an AirPort Base Station to share one IP address among multiple computers. For information about using an AirPort Base Station, check Mac Help or visit the AirPort Support website at www.apple.com/support/airport.

If you cannot resolve the issue using these steps, contact your ISP or network administrator.

Problems with AirPort Extreme Wireless Communication

If you have trouble using AirPort Extreme wireless communication:

- Make sure you have properly configured the software according to the instructions that came with your base station.
- Make sure the computer or network you are trying to connect to is running and has a wireless access point.
- Make sure you are within antenna range of the other computer or the network's access point. Nearby electronic devices or metal structures can interfere with wireless communication and reduce this range. Repositioning or rotating the computer may improve reception.
- Check the AirPort signal level. You may see up to four bars in the AirPort status icon in the menu bar.

- You may experience network performance problems if a microwave oven, cordless telephone, or other source of interference is near your base station. To minimize interference, move the base station away from such devices.
- For more information, see the instructions that came with the wireless device or search for “AirPort” in Mac Help.

Keeping Your Software Up to Date

You can connect to the Internet and automatically download and install the latest free software versions, drivers, and other enhancements from Apple.

When you are connected to the Internet, Software Update checks Apple’s Internet servers to see if any updates are available for your computer. Your iMac is set to automatically check once a week, but you can set it to check daily or monthly. You can also check for updates manually.

To check for updated software, choose Apple (🍏) > Software Update from the menu bar and follow the onscreen instructions. You can also open System Preferences and click the Software Update icon.

For more information, search for “Software Update” in Mac Help. For the latest information about Mac OS X, go to www.apple.com/macosx/overview.

When an Application Doesn't Respond

On rare occasion, an application may “freeze.” Mac OS X provides a way to quit an application that's not responding, without restarting your iMac. Quitting a frozen application may allow you to save your work in other open applications.

To force an application to quit:

- 1 Press Command (⌘)-Option-Esc or choose Apple () > Force Quit.

The Force Quit Applications dialog appears with the application selected.

- 2 Click Force Quit.

The application quits, leaving all other applications open.

Reinstalling the Software That Came with Your iMac

Use the software installation discs that came with your iMac to reinstall Mac OS X and the applications that came with your iMac.

Important: Apple recommends that you back up the data on your hard disk before reinstalling software. Apple isn't responsible for any lost data.

Installing Mac OS X and Applications

To install Mac OS X:

- 1 Back up your important files.

Because the “Erase and Install” option erases your destination disk, you should back up your important files before installing Mac OS X and other applications.

- 2 Insert the Mac OS X Install Disc 1 that came with your iMac.
- 3 Double-click “Install Mac OS X and Bundled Software.”

- 4 Follow the onscreen instructions.
- 5 After selecting the destination disk for installation, continue following the onscreen instructions. Your iMac may restart and ask you to insert the next Mac OS X installation disc.

Installing Applications

To install just the applications that came with your iMac, follow the steps below. Your iMac must have Mac OS X already installed.

To install applications:

- 1 Back up your important files.
- 2 Insert the Mac OS X Install Disc 1 that came with your iMac.
- 3 Double-click “Install Bundled Software only.”
- 4 Follow the onscreen instructions.
- 5 After selecting the destination disk for installation, continue following the onscreen instructions.

Note: To install iCal, iChat, iSync, iTunes, and Safari, follow the “Installing Mac OS X” instructions above.

Other Problems

For a problem with software from a manufacturer other than Apple, contact the manufacturer. Software manufacturers often provide software updates on their website.

You can check for and install the latest Apple software using the Software Update pane of System Preferences. Your iMac is set to check automatically once a week but you can set it to check daily or monthly. You can also check for updates manually. For more information, choose Help > Mac Help and search for “software update.”

Note: Classic (or Mac OS 9) applications are not compatible with your computer and do not open.

If you have trouble inserting a disc

- Using a continuous motion, push the disc into the drive until your fingers touch the side of your iMac.
- Use only a standard-size disc.

If you have trouble ejecting a disc

- Quit any applications that may be using the disc, and then press the Media Eject (⏏) key on your keyboard.
- Open a Finder window and click the eject icon next to the disc icon in the sidebar, or drag the disc icon from the desktop to the Trash.
- Log out from your user account by choosing Apple menu > Log Out “User” (your account name appears in the menu), and then press the Media Eject (⏏) key on your keyboard.
- Restart your iMac while holding down the mouse button.

If you have trouble scrolling with your Mighty Mouse

- If the scrolling feels rough or if the scroll ball isn't scrolling up, down, or side-to-side, hold the mouse upside-down and roll the ball vigorously while cleaning.
- See “Cleaning Your Mighty Mouse” on page 63 for more information.

If you have a problem using your iMac or working with the Mac OS

- If the answer to your question isn't in this manual, look in Mac Help for instructions and troubleshooting information. In the Finder, choose Help > Mac Help.
- Check the Apple Support website at www.apple.com/support for the latest troubleshooting information and software updates.

If your date and time settings keep getting lost

You may need to have the internal backup battery replaced. The battery in your iMac isn't user-replaceable. Contact an Apple Authorized Service Provider or an Apple Store retail location for more information.

Learning More, Service, and Support

Your iMac does not have any user-serviceable parts, except the keyboard, mouse, and memory. If you need service, contact Apple or take your iMac to an Apple Authorized Service Provider. You can find more information about your iMac through online resources, onscreen help, System Profiler, or Apple Hardware Test.

Online Resources

For online service and support information, go to www.apple.com/support. Choose your country from the pop-up menu. You can search the AppleCare Knowledge Base, check for software updates, or get help on Apple's discussion forums.

Onscreen Help

You can often find answers to your questions, as well as instructions and troubleshooting information, in Mac Help. Choose Help > Mac Help.

System Profiler

To get information about your iMac, use System Profiler. It shows you what hardware and software is installed, the serial number and operating system version, how much memory is installed, and more. To open System Profiler, choose Apple (🍏) > About This Mac from the menu bar and then click More Info.

AppleCare Service and Support

Your iMac comes with 90 days of technical support and one year of hardware repair warranty coverage at an Apple Store retail location or an Apple-authorized repair center, such as Apple Authorized Service Provider (AASP). You can extend your coverage by purchasing the AppleCare Protection Plan. For information, visit www.apple.com/support/products or visit the website address for your country listed below.

If you need assistance, AppleCare telephone support representatives can help you with installing and opening applications, and basic troubleshooting. Call the support center number nearest you (the first 90 days are complimentary). Have the purchase date and your iMac serial number ready when you call.

Note: Your 90 days of complimentary telephone support begins on the date of purchase and telephone fees may apply.

Country	Phone	Website
United States	1-800-275-2273	www.apple.com/support
Australia	(61) 133-622	www.apple.com/au/support
Canada (English) (French)	1-800-263-3394	www.apple.com/ca/support www.apple.com/ca/fr/support
Ireland	(353) 1850 946191	www.apple.com/ie/support
New Zealand	00800-7666-7666	www.apple.com/au/support
United Kingdom	(44) 0870 876 0753	www.apple.com/uk/support

Telephone numbers are subject to change, and local and national telephone rates may apply. A complete list is available on the web:

www.apple.com/contact/phone_contacts.html

Locating Your Product Serial Number

Use any of these methods to find the serial number of your iMac:

- Choose Apple () from the menu bar and then choose About This Mac. Click the version number beneath the words “Mac OS X” to cycle through the Mac OS X version number, the build version, and the serial number.
- Click the Finder icon and open /Applications/Utilities/System Profiler. Click Hardware in the Contents pane.
- Look on the bottom of the iMac stand.

5

Last, but Not Least

www.apple.com/environment

Mac Help  ergonomics

For the safety of you and your equipment, follow these rules for cleaning and handling your iMac, and for working more comfortably. Apple products are designed and evaluated to the latest information technology and audio and video equipment safety standards. However, you need to follow the safety instructions on the product and in the documentation.

Safety Instructions for Setting Up and Using Your iMac

For your safety and that of your equipment, always take the following precautions. Keep these instructions handy for reference by you and others.

- Set up your computer on a stable work surface.
- Keep your computer away from sources of liquid, such as drinks, washbasins, bathtubs, shower stalls, and so on.
- Protect your computer from dampness or wet weather, such as rain and snow.
- The only way to disconnect power completely is to unplug the power cord. Always unplug the power cord before opening the computer to install memory.

- Unplug the power cord (by pulling the plug, not the cord) and disconnect the ethernet cable or phone cord if any of the following conditions exists:
 - You want to add memory
 - The power cord or plug becomes frayed or otherwise damaged
 - You spill something into the case
 - Your iMac is exposed to rain or excess moisture
 - Your iMac has been dropped or the case has been damaged
 - You suspect that your iMac needs service or repair
 - You want to clean the case (use only the recommended procedure described later)

Important: The only way to turn off power completely is to unplug the power cord. Make sure at least one end of the power cord is within easy reach so that you can unplug your iMac when you need to.

WARNING: Your AC cord has a three-wire grounding plug (a plug that has a third grounding pin). This plug fits only a grounded AC outlet. If you are unable to insert the plug into an outlet because the outlet isn't grounded, contact a licensed electrician to replace the outlet with a properly grounded outlet. Do not defeat the purpose of the grounding plug.

Important: Electrical equipment may be hazardous if misused. Operation of this product, or similar products, must always be supervised by an adult. Do not allow children access to the interior of any electrical product and do not permit them to handle any cables.

WARNING: Never push objects of any kind into this product through the ventilation openings in the case. Doing so may be dangerous and result in fire or a dangerous electric shock.

Do Not Make Repairs Yourself

Your iMac doesn't have any user-serviceable parts, except the keyboard, mouse, and memory (see "Installing Additional Memory" on page 33). Do not attempt to open your iMac. If your iMac needs service, consult the service and support information that came with your computer for instructions about how to contact an Apple Authorized Service Provider or Apple for service.

If you open your iMac or install items other than memory, you risk damaging your equipment. Such damage isn't covered by the limited warranty on your iMac.

Using Connectors and Ports

Never force a connector into a port. If the connector and port don't join with reasonable ease, they probably don't match. Make sure that the connector matches the port and that you have positioned the connector correctly in relation to the port.

Avoid Hearing Damage

WARNING: Permanent hearing loss may occur if earbuds or headphones are used at high volume. You can adapt over time to a higher volume of sound that may sound normal but can be damaging to your hearing. If you experience ringing in your ears or muffled speech, then stop listening and have your hearing checked. The louder the volume, the less time required before your hearing can be affected. Hearing experts suggest that to protect your hearing, you should:

- Limit the amount of time you use earbuds or headphones at high volume
- Avoid turning up the volume to block out noisy surroundings
- Turn the volume down if you can't hear people speaking to you

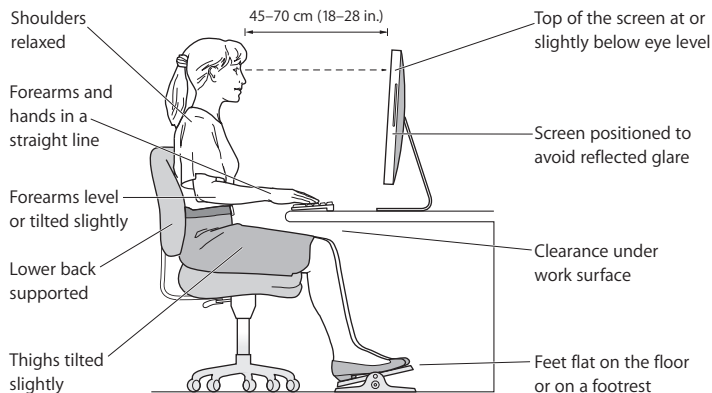
Understanding Ergonomics

Here are some tips for setting up a healthy work environment.

Chair

An adjustable chair that provides firm, comfortable support is best. Adjust the height of the chair so that your thighs are horizontal and your feet are flat on the floor. The back of the chair should support your lower back (lumbar region). Follow the manufacturer's instructions for adjusting the backrest to fit your body properly.

You may have to raise your chair so that your forearms and hands are at the proper angle to the keyboard. If this makes it impossible to rest your feet flat on the floor, you can use a footrest with adjustable height and tilt to make up for any gap between the floor and your feet. Or you may lower the desktop to eliminate the need for a footrest. Another option is to use a desk with a keyboard tray that's lower than the regular work surface.



Display

Arrange the display so that the top of the screen is slightly below eye level when you're sitting at the keyboard. The best distance from your eyes to the screen is up to you, although most people tend to prefer 18 to 28 inches (45 to 70 cm). Position the display to minimize glare and reflections on the screen from overhead lights and windows.

Mouse

Position the mouse at the same height as your keyboard and within comfortable reach.

Keyboard

When you use the keyboard, your shoulders should be relaxed. Your upper arm and forearm should form an angle that is slightly greater than a right angle, with your wrist and hand in roughly a straight line.

Use a light touch when typing and keep your hands and fingers relaxed. Avoid rolling your thumbs under your palms.

Change hand positions often to avoid fatigue. Some computer users may develop discomfort in their hands, wrists, or arms after intensive work without breaks. If you begin to develop chronic pain or discomfort in your hands, wrists, or arms, consult a qualified health specialist.

More information about ergonomics is available on the web:

www.apple.com/about/ergonomics

Cleaning Your iMac

Follow these guidelines when cleaning the outside of your iMac and its components:

- Shut down your iMac and disconnect all cables.
- Use a damp, soft, lint-free cloth to clean the exterior of your iMac. Avoid getting moisture in any openings. Do not spray liquid directly on your iMac.
- Don't use aerosol sprays, solvents, or abrasives.

Cleaning Your iMac Display

Use the cloth that came with your iMac to clean the display.

To clean your iMac display, do the following:

- Shut down your iMac and disconnect all cables.
- Dampen the cloth that came with your iMac, or another clean, soft, lint-free cloth, with water only and wipe the screen. Do not spray liquid directly on the screen.

Cleaning Your Mighty Mouse

You may need to clean your mouse from time to time to remove dirt and dust that has accumulated in the scroll ball area. Hold the mouse upside-down and roll the scroll ball vigorously with the cloth that came with your iMac, or another clean, soft, lint-free cloth, to help dislodge any particles that may interfere with proper scrolling.

Carrying Your iMac

Before you lift or reposition your iMac, shut it down and disconnect all cables and cords connected to it. To lift or move your iMac, hold the sides of the computer.

Apple and the Environment

Apple Inc. recognizes its responsibility to minimize the environmental impact of its operations and products.

More information is available on the web:

www.apple.com/environment

Regulatory Compliance Information

Compliance Statement

This device complies with part 15 of the FCC rules.

Operation is subject to the following two conditions: (1)

This device may not cause harmful interference, and (2)

this device must accept any interference received, including interference that may cause undesired operation. See instructions if interference to radio or television reception is suspected.

L'utilisation de ce dispositif est autorisée seulement aux conditions suivantes : (1) il ne doit pas produire de brouillage et (2) l'utilisateur du dispositif doit être prêt à accepter tout brouillage radioélectrique reçu, même si ce brouillage est susceptible de compromettre le fonctionnement du dispositif.

Radio and Television Interference

This computer equipment generates, uses, and can radiate radio-frequency energy. If it is not installed and used properly—that is, in strict accordance with Apple's instructions—it may cause interference with radio and television reception.

This equipment has been tested and found to comply with the limits for a Class B digital device in accordance with the specifications in Part 15 of FCC rules. These specifications are designed to provide reasonable protection against such interference in a residential installation. However, there is no guarantee that interference will not occur in a particular installation.

You can determine whether your computer system is causing interference by turning it off. If the interference stops, it was probably caused by the computer or one of the peripheral devices.

If your computer system does cause interference to radio or television reception, try to correct the interference by using one or more of the following measures:

- Turn the television or radio antenna until the interference stops.
- Move the computer to one side or the other of the television or radio.
- Move the computer farther away from the television or radio.
- Plug the computer into an outlet that is on a different circuit from the television or radio. (That is, make certain the computer and the television or radio are on circuits controlled by different circuit breakers or fuses.)

If necessary, consult an Apple-authorized service provider or Apple. See the service and support information that came with your Apple product. Or, consult an experienced radio/television technician for additional suggestions.

Important: Changes or modifications to this product not authorized by Apple Inc. could void the EMC compliance and negate your authority to operate the product.

This product has demonstrated EMC compliance under conditions that included the use of compliant peripheral devices and shielded cables between system components. It is important that you use compliant peripheral devices and shielded cables (including Ethernet network cables) between system components to reduce the possibility of causing interference to radios, television sets, and other electronic devices.

Responsible party (contact for FCC matters only):

Apple Inc., Product Compliance
1 Infinite Loop M/S 26-A
Cupertino, CA 95014-2084
408-974-2000

Wireless Radio Use

This device is restricted to indoor use when operating in the 5.15 to 5.25 GHz frequency band.

Cet appareil doit être utilisé à l'intérieur.

Exposure to Radio Frequency Energy

The radiated output power of the AirPort Extreme Card in this device is far below the FCC radio frequency exposure limits for uncontrolled equipment. This device should be operated with a minimum distance of at least 20 cm between the AirPort Extreme Card antennas and a person's body and must not be co-located or operated with any other antenna or transmitter.

European Community

Complies with European Directives 72/23/EEC and 89/336/EEC, and 99/5/EC.

Europe—EU Declaration of Conformity

The equipment complies with the RF Exposure Requirement 1999/519/EC, Council Recommendation of 12 July 1999 on the limitation of exposure of the general public to electromagnetic fields (0 Hz to 300 GHz). This equipment meets the following conformance standards:

EN300 328, EN301 893, EN301 489-17, EN60950

Hereby, Apple Inc. declares that this 802.11 Mini-PCIe card is in compliance with the essential requirements and other relevant provisions of Directive 1999/5/EC.

Korea Mouse Statement



명 칭 (모 델 명) : Mighty Mouse (A1152)
인 증 번 호 : E-C011-05-3838 (B)
인 증 자 상 호 : 애플컴퓨터코리아(주)
제 조 년 월 일 : 별도표기
제 조 자/제 조 국 : Apple Inc. / 말레이시아



명 칭 (모 델 명) : Mighty Mouse (A1152)
인 증 번 호 : E-C011-05-3838 (B)
인 증 자 상 호 : 애플컴퓨터코리아(주)
제 조 년 월 일 : 별도표기
제 조 자/제 조 국 : Apple Inc. / 중국

Korea Statements

“당해 무선설비는 운용 중 전파혼신 가능성이 있음”

B급 기기 (가정용 정보통신기기)

이 기기는 가정용으로 전자파적합등록을 한 기기로서 주거지역에서는 물론 모든 지역에서 사용할 수 있습니다.

Singapore Wireless Certification

Complies with
IDA Standards
DB00063

Taiwan Wireless Statements

於 2.4GHz 區域內操作之 無線設備的警告聲明

經型式認證合格之低功率射頻電機，非經許可，公司、商號或使用者均不得擅自變更頻率、加大功率或變更原設計之特性及功能。低功率射頻電機之使用不得影響飛航安全及干擾合法通信；經發現有干擾現象時，應立即停用，並改善至無干擾時方得繼續使用。前項合法通信指依電信法規定作業之無線電通信。低功率射頻電機須忍受合法通信或工業、科學及醫療用電波輻射性電機設備之干擾。

於 5.25GHz 至 5.35GHz 區域內操作之 無線設備的警告聲明

工作頻率 5.250 ~ 5.350GHz 該頻段限於室內使用。

Taiwan Statement

產品名稱：滑鼠

型號：A 1 1 5 2

進口商：美商蘋果電腦股份有限公司台灣分公司

Taiwan Class B Statement

Class B 設備的警告聲明

NIL

VCCI Class B Statement

情報処理装置等電波障害自主規制について

この装置は、情報処理装置等電波障害自主規制協議会 (VCCI) の基準に基づくクラス B 情報技術装置です。この装置は家庭環境で使用されることを目的としていますが、この装置がラジオやテレビジョン受信機に近接して使用されると、受信障害を引き起こすことがあります。

取扱説明書に従って正しい取扱をしてください。

Mouse Class 1 LED Information

The Apple Mighty Mouse is a Class 1 LED product in accordance with IEC 60825-1 A1 A2.

It also complies with the Canadian ICES-003 Class B Specification.

External USB Modem Information

When connecting your iMac to the phone line using an external USB modem, refer to the telecommunications agency information in the documentation that came with your modem.

ENERGY STAR® Compliance



As an ENERGY STAR® partner, Apple has determined that standard configurations of this product meet the ENERGY STAR® guidelines for energy efficiency. The ENERGY STAR® program is a partnership with electronic equipment manufacturers to promote energy-efficient products. Reducing energy consumption of products saves money and helps conserve valuable resources.

This computer is shipped with power management enabled with the computer set to sleep after 10 minutes of user inactivity. To wake your computer, click the mouse or press any key on the keyboard.

For more information about ENERGY STAR®, visit: www.energystar.gov

中国

有毒或 有害物质	零部件			
	电路板	显示屏	附件	键盘 / 鼠标
铅 (Pb)	X	X	X	X
汞 (Hg)	○	X	○	○
镉 (Cd)	○	○	○	○
六价铬 (Cr, VI)	○	○	○	○
多溴联苯 (PBB)	○	○	○	○
多溴二苯醚 (PBDE)	○	○	○	○

O: 表示该有毒有害物质在该部件所有均质材料中的含量均在 SJ/T 11363-2006 规定的限量要求以下。

X: 表示该有毒有害物质至少在该部件的某一均质材料中的含量超出 SJ/T 11363-2006 规定的限量要求。

根据中国电子行业标准 SJ/T11364-2006 和相关的中国政府法规，本产品及其某些内部或外部组件上可能带有环保使用期限标识。取决于组件和组件制造商，产品及其组件上的使用期限标识可能有所不同。组件上的使用期限标识优先于产品上任何与之相冲突的或不同的环保使用期限标识。

Disposal and Recycling Information



This symbol indicates that your product must be disposed of properly according to local laws and regulations. Because the backlight lamp in this product contains mercury, the product must be disposed of separately from household waste. When your product reaches its end of life, contact Apple or your local authorities to learn about recycling options.

For information about Apple's recycling program, go to www.apple.com/environment/recycling.

Battery Disposal Information

Dispose of batteries according to your local environmental laws and guidelines.

California: The coin cell battery in your product contains perchlorates. Special handling and disposal may apply. Refer to www.dtsc.ca.gov/hazardouswaste/perchlorate.

Deutschland: Dieses Gerät enthält Batterien. Bitte nicht in den Hausmüll werfen. Entsorgen Sie dieses Gerätes am Ende seines Lebenszyklus entsprechend der maßgeblichen gesetzlichen Regelungen.

Nederlands: Gebruikte batterijen kunnen worden ingeleverd bij de chemokar of in een speciale batterijcontainer voor klein chemisch afval (kca) worden gedeponeerd.



Taiwan:



廢電池請回收

European Union—Disposal Information:



The symbol above means that according to local laws and regulations your product should be disposed of separately from household waste. When this product reaches its end of life, take it to a collection point designated by local authorities. Some collection points accept products for free. The separate collection and recycling of your product at the time of disposal will help conserve natural resources and ensure that it is recycled in a manner that protects human health and the environment.

Looking for Something?

Index

A

- adapters, video 25
 - AirPort Extreme
 - technology 27
 - using 29
 - AppleCare 52
 - Apple Keyboard 21, 23
 - Apple Remote 21, 29
 - applications
 - Classic 50
 - freezing 48
 - Front Row 29
 - iLife 28
 - installing 49
 - Mac OS 9 50
 - using Software Update 47
 - assistants
 - Migration Assistant 14
 - Setup Assistant 14
 - audio 25
 - audio in/optical digital audio in port 25
- ## B
- battery
 - disposal 67
 - battery, internal backup 51

- Bluetooth wireless technology 27
- built-in
 - iSight camera 21
 - microphone 21
 - speakers 23
- button, power 13

C

- cable modem 11, 44
- camera, iSight 21
- camera indicator light 21
- carrying your iMac 63
- changing
 - the desktop 14
 - System Preferences 14
- Classic 50
- cleaning
 - display 63
 - mouse 63
 - your iMac 62
- computer. *See* iMac
- computer disposal 67
- connecting external speakers 25

D

- date and time settings lost 51
- deauthorize computer in iTunes 14
- desktop, customizing 14
- dial-up connection 11
- DIMMs. *See* memory
- display
 - adapters 25
 - cleaning 63
 - port 25
- disposing of batteries 67
- disposing of your computer 67
- Dock 28
- downloading software 47
- DSL modem 11, 44

E

- ejecting a disc 50
- environment 63
- ergonomics 60
- Ethernet port 25
- external speakers 25
- external USB modem 11

F

- FireWire

- connections 29
- ports 25
- flashing question mark 42
- Force Quit 48
- Front Row 21
- Front Row application 29
- frozen
 - application 48

G

- general safety instructions 56

H

- headphone out/optical digital audio out port 25

I

- iChat

- application 21
 - installing 49

- iLife applications 28

- iMac

- back view 26
 - cleaning 62
 - features 20, 22
 - front view 20, 22
 - other components 26
 - ports 24
 - putting to sleep 15
 - setting up 10
 - shutting down 15
 - turning on 13

- infrared receiver 23
- installing

- applications 50
 - Mac OS X 48

- Internet

- connecting 11

- iSight

- indicator light 21
 - video camera 21

- ISP 44

K

- keyboard

- ergonomics 62
 - function keys 23
 - setup 12
 - wireless 12

L

- LAN 44

M

- Mac Help 28

- Mac OS 9 50

- Mac OS X

- installing 48
 - website 28

- memory

- access door 27
 - how much is installed 38
 - installing 33

- mercury 67

- microphone 21

- Mighty Mouse

- cleaning 63
 - ergonomics 62
 - multibutton 21
 - setting up 12
 - wireless 12

- Migration Assistant 14

- mini-DVI video out port 25

- modem

- cable 11, 44
 - DSL 11, 44
 - external USB 11

- mouse. *See* Mighty Mouse

N

- network connections 45

- Network Diagnostics 44

O

- online resources 51

- optical digital audio out 25

- optical disc drive 21

P

- ports 25

- audio in 25
 - display 25
 - Ethernet 25
 - FireWire 25
 - headphone 25
 - mini-DVI video out 25

- optical digital audio out 25
- overview 24
- power 10, 27
- safety information 58
- USB 25
- power button 13, 27
- power port 10, 27
- PPPoE 44
- problems. *See* troubleshooting
- product serial number 53

Q

- question mark 42

R

- RAM. *See* memory
- remote 21

S

- S/PDIF stereo 25
- safety 56
- SDRAM. *See* memory
- security slot 27
- serial number 53
- service and support 52
- setting up
 - your iMac 10
- Setup Assistant 14
- shutting down
 - before installing memory 33
 - the computer 15

- sleep 15
- Software Update 47
- speakers 23
- specifications 29
- stopping an application 48
- support 52
- System Preferences
 - customizing the desktop 14
 - Energy Saver 15
 - Software Update 47, 50
 - Startup Disk 42
- System Profiler 52

T

- troubleshooting 39
 - AirPort Extreme 46
 - AppleCare 52
 - computer freezes during startup 42
 - computer won't respond 41
 - computer won't start up 42
 - date and time settings lost 51
 - ejecting a disc 50
 - Internet connection 44
 - service and support 51
 - using Mac Help 52
- turning on your iMac 13

U

- updating software 47

- USB
 - connections 29
 - ports 25

V

- video adapters 25
- video out port 25

W

- wireless
 - keyboard 12
 - Mighty Mouse 12



© 2007 Apple Inc. All rights reserved.

Under the copyright laws, this manual may not be copied, in whole or in part, without the written consent of Apple.

The Apple logo is a trademark of Apple Inc., registered in the U.S. and other countries. Use of the “keyboard” Apple logo (Option-Shift-K) for commercial purposes without the prior written consent of Apple may constitute trademark infringement and unfair competition in violation of federal and state laws.

Every effort has been made to ensure that the information in this manual is accurate. Apple is not responsible for printing or clerical errors.

Apple
1 Infinite Loop
Cupertino, CA 95014-2084
408-996-1010
www.apple.com

Apple, the Apple logo, AirPort, AirPort Extreme, Exposé, FireWire, iCal, iLife, iMac, iMovie, iPod, iSight, iTunes, Mac, Mac OS, Macintosh, and SuperDrive are trademarks of Apple Inc., registered in the U.S. and other countries.

Finder, the FireWire logo, and Safari are trademarks of Apple Inc.

AppleCare and Apple Store are service marks of Apple Inc., registered in the U.S. and other countries. iTunes Store is a service mark of Apple Inc.

Mighty Mouse © Viacom International Inc. All rights reserved. The Mighty Mouse trademark is used under license.

ENERGY STAR® is a U.S. registered trademark.

Intel, Intel Core, and Xeon are trademarks of Intel Corp. in the U.S. and other countries.

The Bluetooth® word mark and logos are registered trademarks owned by Bluetooth SIG, Inc. and any use of such marks by Apple is under license.

Other company and product names mentioned herein may be trademarks of their respective companies. Mention of third-party products is for informational purposes only and constitutes neither an endorsement nor a recommendation. Apple assumes no responsibility with regard to the performance or use of these products.

Manufactured under license from Dolby Laboratories. “Dolby,” “Pro Logic,” and the double-D symbol are trademarks of Dolby Laboratories. Confidential Unpublished Works, © 1992–1997 Dolby Laboratories, Inc. All rights reserved.

The product described in this manual incorporates copyright protection technology that is protected by method claims of certain U.S. patents and other intellectual property rights owned by Macrovision Corporation and other rights owners. Use of this copyright protection technology must be authorized by Macrovision Corporation and is intended for home and other limited viewing uses only unless otherwise authorized by Macrovision Corporation. Reverse engineering or disassembly is prohibited.

Apparatus Claims of U.S. Patent Nos. 4,631,603, 4,577,216, 4,819,098 and 4,907,093 licensed for limited viewing uses only.

Simultaneously published in the United States and Canada.

