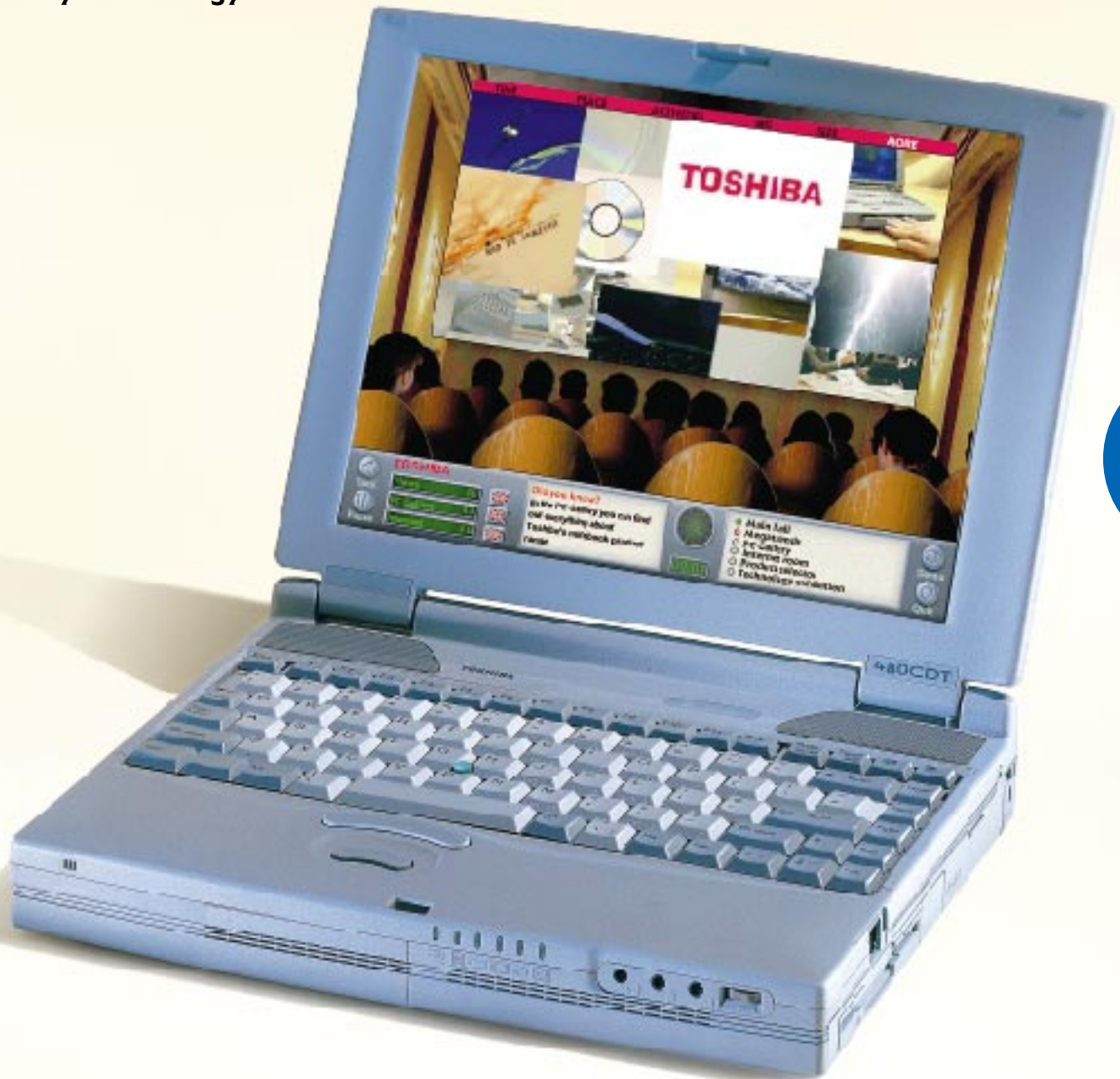


From the world market leader in mobile PCs: the Satellite Pro 480CDT.

Satellite Pro 480CDT

- 233 MHz Pentium® processor with MMX™ technology
- 32–160 MB EDO RAM
- 4.1 billion byte hard disk
- 12.1" TFT colour screen
- SelectBay technology



Satellite Pro

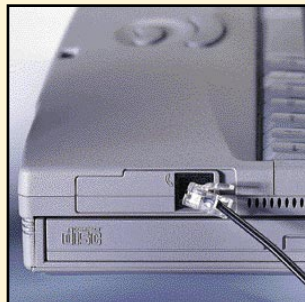
In Touch with Tomorrow
TOSHIBA



Take it from Toshiba. The Satellite Pro family stands for the perfect synthesis of high performance and great value. And now the Satellite Pro 480CDT shows just how far this can take you: 233 MHz Pentium® processor with MMX™ technology, 4.1 billion byte hard disk, SelectBay modular technology, and a 12.1" TFT colour screen. All at a remarkably low price. Just ask your Toshiba dealer.



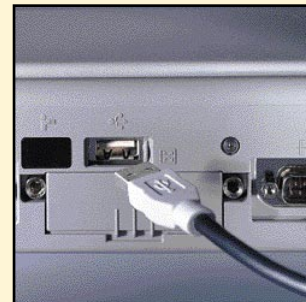
Total versatility: CD-ROM or floppy disk drive, a second hard disk or an additional battery. The choice is up to you. Thanks to the Toshiba SelectBay you can swap them in seconds.



Highly practical: the optional, integrated 33.6 kbps modem turns your notebook into telephone, fax and answering machine.



Great connections: the Card Station III gives you instant connectivity and also additional PC Card slots.



So easy: forget cable spaghetti. With the Universal Serial Bus (USB) you've got just one port. Easier on your nerves and quicker connections.

Processor

Intel Pentium® processor with MMX™ technology, 233 MHz int./66 MHz ext., 1.8 volt core using Voltage Reduction Technology, 32 KB cache on chip

Memory

Standard 32 MB EDO RAM, expandable to 160 MB
256 KB 2nd level cache

Hard disk

4.1 billion byte capacity (3.8 GB)
2nd hard disk (optional):
2.1 billion byte (2.0 GB)

Diskette drive

3.5" 1.44 MB/720 KB, can also be used externally, swappable with CD-ROM drive

CD-ROM drive

10-speed, 12 cm (5.25") and 8 cm (3.5") disks, Data transfer: 1700 KB/s, Average random access time: 180 ms

Display

12.1" TFT colour screen

Graphics adapter

SVGA-/VGA compatible, dual display mode, PCI Bus, BitBIT 64-bit graphics accelerator, 2 MB Video RAM

Internal video modes

800 x 600 x 16.7 mill. colours*

External video modes

640 x 480 x 16.7 mill. colours
800 x 600 x 16.7 mill. colours
1024 x 768 x 65,536 colours
1280 x 1024 x 256 colours
Up to 85 Hz refresh rate

Keyboard

86 keys with integrated Mouse-Point, 12 function keys, 8 dedicated cursor keys, inlaid numeric keypad, 8 Hot Keys, 2 Windows 95 keys

BIOS

DMI 2.0 compatible

Sound system

16-bit stereo Sound Blaster Pro compatible, MIDI & WAVE support, 3D Wide-Modus, built-in stereo speakers and microphone

Interfaces

FIR (fast infrared port), serial, parallel, PS/2 mouse or keyboard, audio-in/out, headphone, ext. microphone, USB port, Card Station Interface, Card Station III also provides 2 USB ports

Expansion

2 x PC Card Type II or
1 x PC Card Type III, ZV port & CardBus support, memory expansion, opt. int. 33.6 kbps fax/modem/telephone
Card Station III also provides
2 PC Card Type III slots,
2 x USB ports
SelectBay for diskette drive, CD-ROM-drive, 2nd hard disk or 2nd battery

Power supply

Autosensing 100-240 V AC adaptor for world-wide usage

Battery

Removable lithium-ion batteries, 2.5-2.8 hrs battery life, with opt. 2nd battery up to 5.6 hrs

Size and Weight

303.6 x 239 x 50.5 mm, 3.1 kg

Bundled software

Microsoft Windows 95 or other Microsoft operating systems (upon request), PC Card Management Software, Audio & Video driver, Infrared data transmission software, all pre-installed on the hard disk

Bundled hardware

Ext. diskette drive, AC adaptor, CD-ROM drive

Special features

Integrated 33.6 kbps fax/modem/telephone (opt.), Toshiba AutoResume with AutoSave, MaxTime with Advanced Power Management, HotLock, System password, Plug and Play BIOS, 3 year International Warranty

Options

Carrying case, Card Station III, extra battery packs, 2nd hard disk, battery charger, 8/16/32/48/128 MB memory modules, PC Card Ethernet adaptor, int. 33.6 kbps fax/modem/telephone kit or PC Card High Speed modem

* Optimised colour adaption used for colour depths above screen capabilities. (True colour)

TOSHIBA

Dealer stamp