



126 series miniature hexagonal

The compact and lightweight construction of 126 Series hexagonal connectors makes them widely used in many different types of applications. Four different contact configurations and a variety of accessories are available to adapt them for a multitude of uses.

These connectors can be used for rack-and-panel, cable-to-cable and cable-to-panel connections. Locking clips—engaged by a 30° twist—are available to prevent accidental unmating caused by vibration or shock.

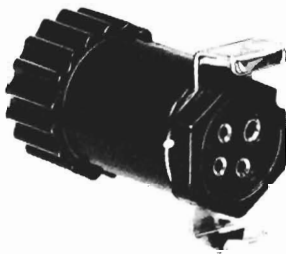
Connectors are moulded of glass-filled diallyl phthalate, with the male contacts moulded into the dielectric. The rear hoods are also diallyl phthalate, reducing the chances of electrical breakdown from contacts to hood.

All the contacts are size 20 (0.040 dia.) except for one size 16 (0.062 dia.) on the 4-contact insert. Solder pockets accommodate a #20 or smaller gauge wire. Overall

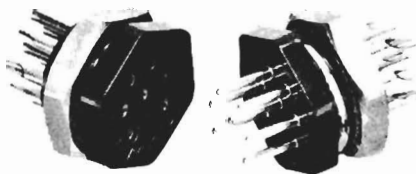
diameter of the connector is $\frac{3}{4}$ ". When mated, the extended length to the back of the cable clamp is only 1.23". A simple brass nut fastens the connector when mounted on a panel. Keying of the connector body prevents rotation on the panel (see dimension drawings). Gold-plate contacts can be soldered without pretinning, even after long storage.

Specifications

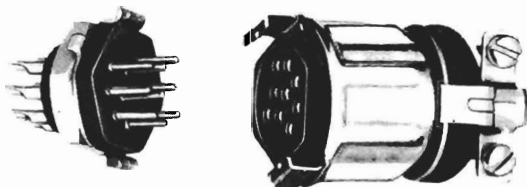
Temperature Range	−60 °C to +125 °C.
Current Rating	7.5A.
Voltage Rating	500V (rms).
	60 Hz at sea level.
Dielectric	Diallyl Phthalate.
Hardware	Solid brass, nickel-plated.
Contacts	Gold over silver plated.
Wire size	#20 AWG or #22 JAN-C76.



4 Contact Connector with Hood and Locking Clip #2

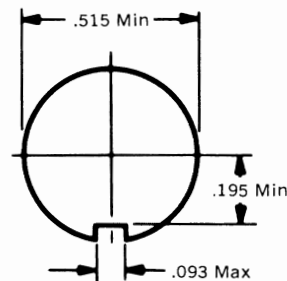


Connector Pair (any number of Contacts) with Hex Nuts

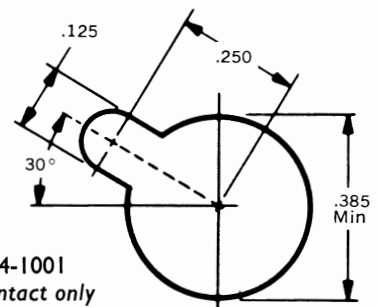


Panel Mount Plug and Mating Cable Receptacle with Hood and Lock-sleeve (5-7-9 Contacts only)

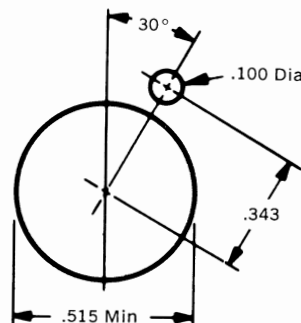
Mounting holes



Hex Nut Type
Mounting Holes



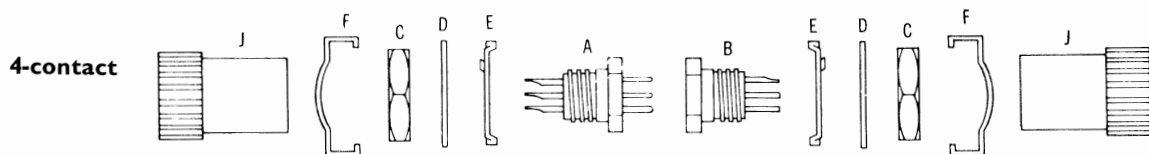
126-214 and 126-214-1001
Mounting hole for 4-contact only



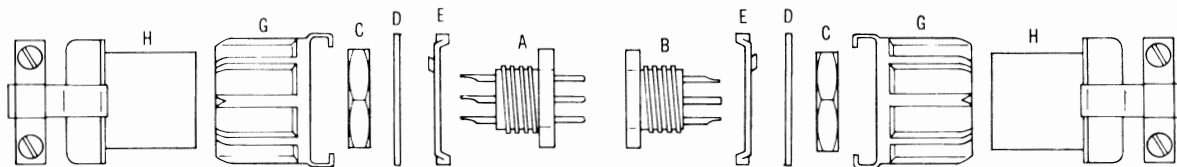
All Others



Ordering information 126 series miniature hexagonal



5-9 contact connectors



These connectors can be ordered in any combination. Please refer to the exploded view drawing above to determine the components required. Note the identification letter. Then order by the Amphenol part number indicated alongside the desired combination of components and the required number of contacts.

For rack and panel use, connectors may be used alone, or with hex nut (C) or hex nut and lockwasher (D). For panel mounting, a locking clip (E) should be added. For cable to panel connections, a lock sleeve (G) and rear hood (H) is required. Cable to cable applications require rear hood (H) and clip (E) in addition to the basic insert (A or B).

Connector assemblies

4-contact

MALE		FEMALE	
A	126-1427	B	126-1429
AC	126-1431	BC	126-3815
ACD	126-1432	BCD	126-3816
AFJ	126-214-1000	BFJ	126-215
ACE	126-214	BCE	126-233
ACDE	126-214-1001	BCDE	126-215-1002
AEJ	126-214-1002	BEJ	126-215-1001

Backshells do not have cable clamps.

5-contact

MALE		FEMALE	
A	126-1083	B	126-1085
AC	126-010	BC	126-011
ACD	126-010-1000	BCD	126-011-1000
AGH	126-217	BGH	126-223
ACE	126-216	BCE	126-218
ACDE	126-216-1000	BCDE	126-218-1000
AEH	126-217-1000	BEH	126-223-1000

7-contact

MALE		FEMALE	
A	126-1059	B	126-1057
AC	126-191	BC	126-192
ACD	126-191-1000	BCD	126-192-1001
AGH	126-195	BGH	126-196
ACE	126-197	BCE	126-198
ACDE	126-197-1000	BCDE	126-198-1003
AEH	126-195-1002	BEH	126-196-1000

9-contact

MALE		FEMALE	
A	126-1080	B	126-1082
AC	126-012	BC	126-013
ACD	126-012-1000	BCD	126-013-1000
AGH	126-220	BGH	126-222
ACE	126-219	BCE	126-221
ACDE	126-219-1000	BCDE	126-221-1000
AEH	126-220-1000	BEH	126-221-1001

Parts

4-contact connector

Description	Part No.	Item Key
Basic Male Connector	126-1427	A
Basic Female Connector	126-1429	B
Hex Nut	41-153	C
Lockwasher	43-737	D
Clip #1	126-1428	E
Clip #2	126-1430	F
Hood	126-1425	J

5-7-9 contact connectors

Description	Part No.	Item Key
5-contact Basic Male Connector	126-1083	A
5-contact Basic Female Connector	126-1085	B
7-contact Basic Male Connector	126-1059	A
7-contact Basic Female Connector	126-1057	B
9-contact Basic Male Connector	126-1080	A
9-contact Basic Female Connector	126-1082	B
Hex Nut	41-108	C
Lock washer	43-469-02	D
Clip	126-1062-02	E
Locksleeve	126-1064-04	G
Hood & Cable Clamp	126-1063	H