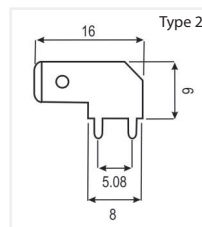
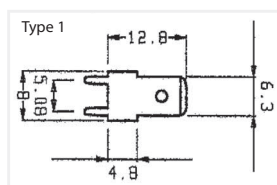


6.3mm PCB MALE TERMINALS //

- 6.3mm PCB male terminals
- Made from brass electro-tinned – 0.8mm material thickness

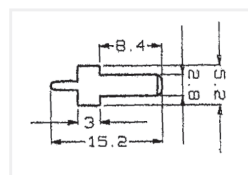
Item/Part No. *	Description	Type
CT1501ET/100	6.3mm PCB TAB E/T	1
CT1502ET/100	6.3mm R/ANG PCB TAB E/T	2



2.8MM PCB MALE TERMINALS //

- 2.8mm PCB male terminals
- Made from brass electro-tinned – 0.5mm material thickness

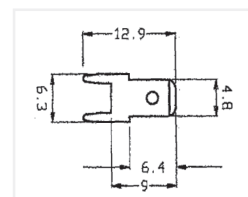
Item/Part No. *	Description
CT1508-5ET/100	2.8mm PCB TAB E/T
CT1508-5ET/5000	2.8mm PCB TAB E/T



4.8mm PCB MALE TERMINALS //

- 4.8mm PCB male terminals
- Made from brass electro-tinned – 0.5mm material thickness

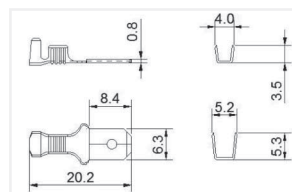
Item/Part No. *	Description
CT1509-8ET/100	4.8mm QC TAB LANCELESS (B)



6.3mm QC CRIMP TERMINALS //

- Made from 0.4mm natural brass or nickel silver -0.8mm tab thickness
- Wire size 0.7 - 2.1mm²
- Use the CT-XLHDF0560 tool below

Item/Part No. *	Description
CT2501/100	6.3mm QC TAB BRASS
CT2501/25	6.3mm QC TAB BRASS
CT2501NS/100	6.3mm QC TAB NICKEL SILVER
CT2501NS/25	6.3mm QC TAB NICKEL SILVER



* Pack Size denoted by /number i.e. CT2501NS/25 = 25 pieces per pack.

6.3mm BRASS QC CRIMP ADAPTORS //

- 6.3mm QC adaptors
- Made from 0.4mm natural brass - 0.8mm tab thickness

Item/Part No. *	Description
MMF01N1/100	2 MALE TABS + 1 FEMALE RECEPTACLE
MMF01N1/25	2 MALE TABS + 1 FEMALE RECEPTACLE

