

# Insulating Washers

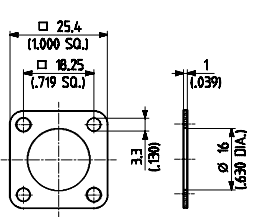


Fig. 1

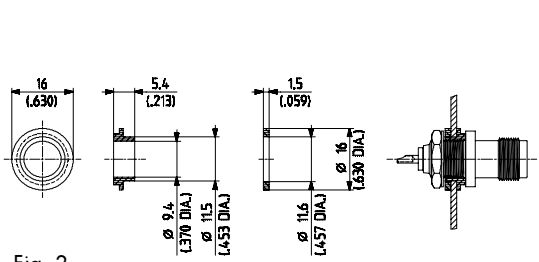


Fig. 2

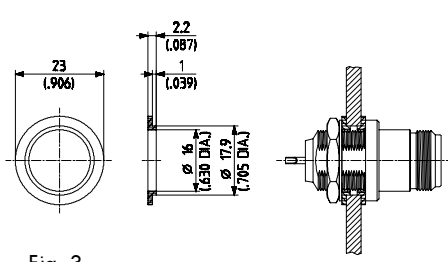


Fig. 3

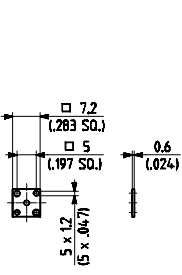


Fig. 4

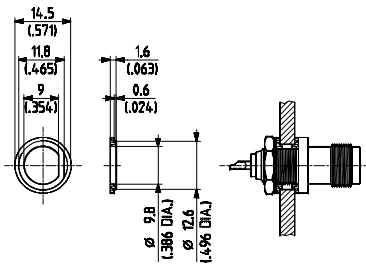


Fig. 5

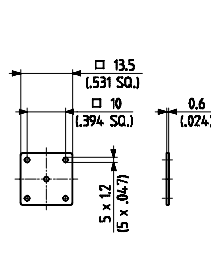


Fig. 6

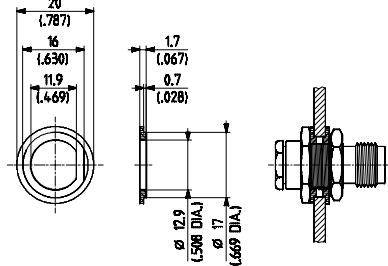


Fig. 7

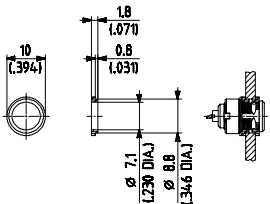


Fig. 8

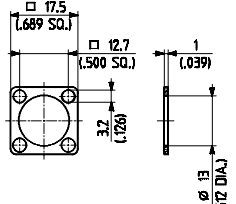


Fig. 9

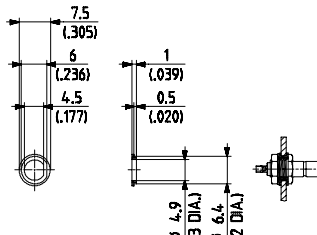


Fig. 10

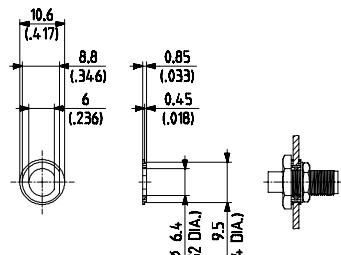


Fig. 11

SUHNER TYPE	Order No.	Suitable for:		Mounting hole	Material	Fig.	Notes
		Connector pattern*	Connector series				
77 Z-0-0-1 / --- -H	22543199	23, 25	N	ML 14	polyamide	1	10 pcs each
77 Z-0-0-2 / --- -H	22543200	12, 22	BNC, TNC	ML 102	polyamide	2	**/10 pairs
77 Z-0-0-4 / --- -Z	22543202	12,22,24,34	N	ML 113	polyamide	3	10 pairs
77 Z-0-0-8 / --- -H	22543204	82, 85	SMB/C/S, MCX, QLA 00, SMA	ML 41	PTFE	4	100 pcs
77 Z-0-0-9 / --- -Z	22543205	12, 22	BNC, TNC	ML 4	polycarbonate	5	**/10 pairs
77 Z-0-0-11 / --- -H	22543207	82, 85	BNC, TNC	ML 49	PTFE	6	10 pcs
77 Z-0-0-12 / --- -H	22543209	24, 34	BNC, TNC	ML 22	polycarbonate	7	10 pairs
77 Z-0-0-14 / --- -Z	22543211	22, 24, 34	QLA 00	ML 114	polyamide	8	**/10 pairs
77 Z-0-0-15 / --- -H	22641429	23, 25	BNC, TNC	ML 8	polyethylene	9	10 pcs each
77 Z-0-0-21 / --- -Z	22645782	22, 24, 34	SMB/C/S	ML 35	polycarbonate	10	10 pairs
77 Z-0-0-23 / --- -Z	22652083	22, 34***	SMA	ML 2	polycarbonate	11	for connectors with ML 35 only / 10 pairs

\* for connector pattern [CLICK HERE](#)

\*\* without rotation protection

\*\*\* not all types of pattern 34 are suitable for insulated mounting