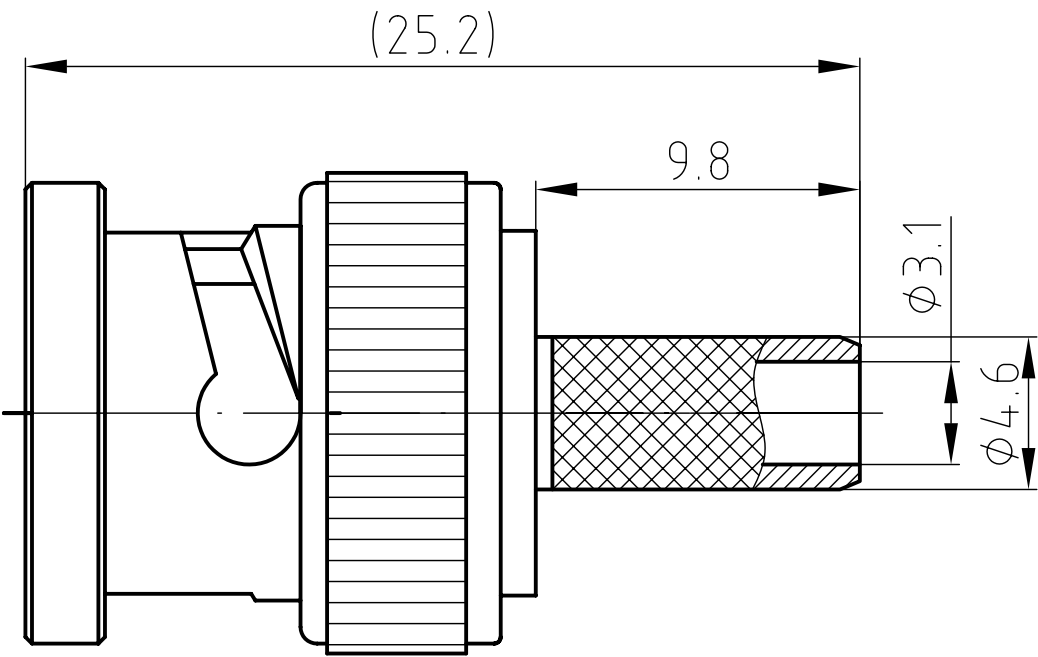
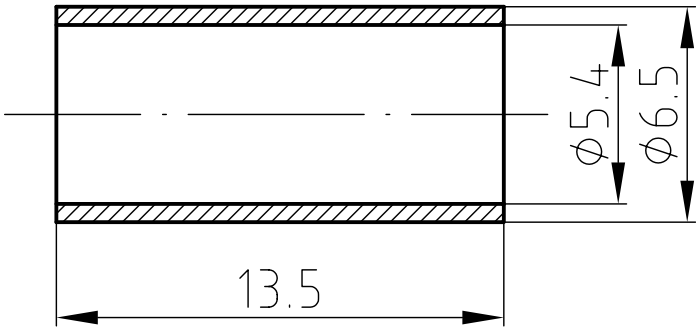


1	2	3	4
RevNo	Revision note	Date	Signature
			Checked



Crimp Ferrule



Material and Plating
 Body : Brass CuSnZn alloy plated;
 Center contacts: brass gold plated;
 Insulators: PTFE;
 Crimp ferrule: copper alloy nickel plated.

Itemref	Quantity	Title/Name, designation, material, dimension etc			Article No./Reference	
Designed by Li 2005.06.30		Checked by Cao	Approved by - date	Filename	Date 2005.06.30	Scale 4:1
xian connector tech			BNC(SJ)-J5Y-3 BNC1112024/W/0008			
			Outline Drawing		Edition 1	Sheet