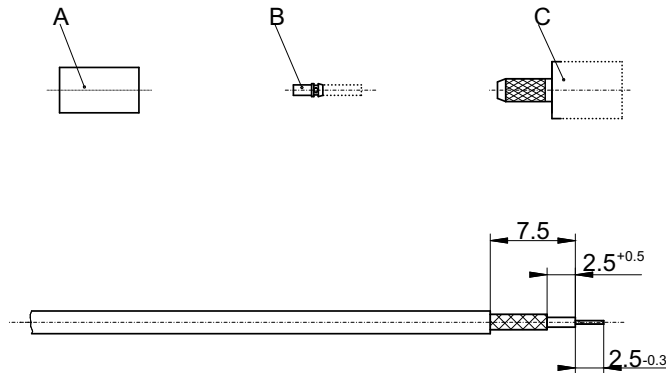


**Straight Connectors
for flexible cable**

Cable entry:

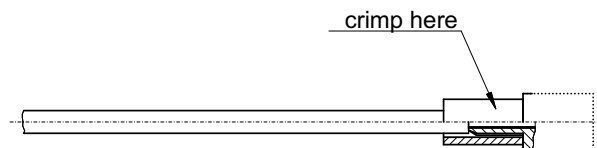
**Center contact - crimp
Braid - crimp**



1. Prepare the cable according to the diagram.



2. Slide ferrule "A" onto the cable.
3. Push center pin "B" over the inner conductor of the cable and crimp it. *)
4. Splay out the braid.



5. Insert the prepared cable into connector body "C" until the center pin engages perceptibly. Ensure that the braid covers the knurled connector end.
6. Slide ferrule "A" over the braid and crimp as close to the connector body as possible. *)

*) For the crimping die part-nr. please consult the relevant customer drawing.

für diese technische Unterlage bezahlen wir uns alle Rechte vor (DIN 34)

				Rosenberger Hochfrequenztechnik 84526 Tittmoning			Tools: Strippingtool Crimp tool 11 W 150-000
				Bearb.	01.03.96	Krautenb.Sa.	
a	CAD-MTP	01.03.96	Kra.Sa.	Gep.			Blatt 1/1
Zust.	Änderung	Datum	Name				