

1. General Data

Moisture-proof, splash-proof, non-corrosive.
 Metal parts silver-plated and passivated.
 Insulation: Teflon (P.T.F.E.).
 Seals: silicone rubber.
 Spring Contacts: Bushes from beryllium bronze.
 Outer conductors: phosphor bronze.
 Inner Contacts: loose or captive.

Impedance: 50 ohms, 75 ohms, electrically matched.

In order to obtain correct electrical matching, it is imperative to mate only connectors of the same impedance.

Application

Where several type 'C' connectors are used on the same instruments in close proximity (picture signals – sound signals) Suhner series 'J' connectors help to prevent wrong connections.

Frequency Range: up to 10000 Mc/s.

Operating Voltage: up to 1 kV_{eff} for higher voltages see series H1, H3

Temperatur Limit: up to 480°F/250°C

Cable-Entry Size: .177"885" dia.
 (4,5 mm ... 22,5 mm)

2. Suitable Cables

Cable types Examples	Dielectric dia. inches	Screen		Sheath max. dia. inches	Suitable types 'C' connectors
		number	dia. inches		
RG-58 C/U RG-141 A/U RG-142 A/U UR 76 G 03232 G 03233 96 IEC-50-3-1	.116 (2,95 mm)	1	.165 (4,2 mm) max.	.209 (5,3 mm)	... C-50-3 -... ... C-75-3 -...
RG-141A/U-1 RG-303/U	.116 (2,95 mm)	1	.142 (3,6 mm)	.181 (4,6 mm)	... C-50-3 ...
RG-223/U RG-55 A/U G 03232d G 03233d 96 IEC-50-3-5	.116 (2,95 mm)	2	.165 (4,2 mm)	.228 (5,8 mm)	... C-50-3 -... ... C-75-3 -...
RG-59 B/U RG-62 A/U RG-140/U UR 90 G 04233-1 96 IEC-50-4-1	.146 (3,7 mm)	1	.177 (4,5 mm)	.252 (6,4 mm)	... C-50-4 -... ... C-75-4 -...
G 04233d 96 IEC-75-4-2	.146 (3,7 mm)	2	.205 (5,2 mm)	.272 (6,9 mm)	... C-75-4 -...
RG-6 A/U RG-212/U RG-222/U RG-143 A/U	.185 (4,7 mm)	1	.244 (6,2 mm)	.339 (8,6 mm)	... C-50-5 -... ... C-75-5 -...
RG-11 A/U RG-213/U RG-144/U RG-165/U 96 IEC-50-7-1 96 IEC-75-7-1 RG-225/U-1 RG-63 B/U	.285 (7,25 mm)	1	.320 (8,1 mm)	.413 (10,8 mm)	... C-50-7 -... ... C-75-7 -...
RG-214/U RG-216/U RG-225/U 96 IEC-50-7-3 96 IEC-75-7-3	.285 (7,25 mm)	2	.343 (8,7 mm)	.441 (11,3 mm)	... C-50-7 -... ... C-75-7 -...
RG-165/U-1 RG-144/U-1	.285 (7,25 mm)	1	.320 (8,1 mm)	.390 (9,9 mm)	... C-50-7 -... ... C-75-7 -...
RG-217/U	.370 (9,4 mm)	1	.441 (11,3 mm)	.551 (14,0 mm)	... C-50-9 -...
G 12232 G 12233 96 IEC-50-12-1	.453 (11,5 mm)	1	.488 (12,4 mm)	.610 (15,5 mm)	... C-50-12 -... ... C-75-12 -...
RG-218/U RG-164/U 96 IEC-50-17-1 96 IEC-75-17-1	.681 (17,3 mm)	1	.728 (18,5 mm)	.885 (22,5 mm)	... C-50-17 -... ... C-75-17 -...

3. Cable-Entry Construction

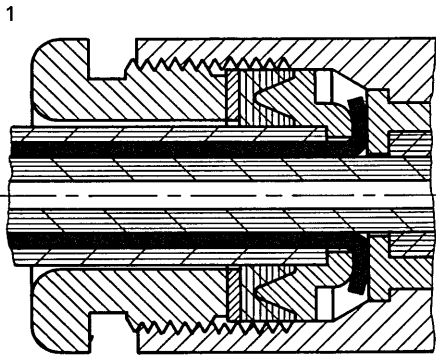
This standard execution ensures a reliable and non-ageing clamping of the cable. When fitting the cable-entry nut, the V-groove silicone rubber gasket is split by a clamp and is pressed laterally against the cable jacket and the connector body. This ensures a permanent moisture- and splash-proof seal. (See illustration 1). Some connector types have a cylindrical gasket. They are clearly marked in the catalog lists.

FUK/GUK Cable-Entry Constructions

These particularly robust, tear-proof and twist-proof cable-entry constructions can be fitted to nearly all connector bodies (see illustrations 2 and 3).

The following FUK/GUK types are available:

Types	FUK 0350	FUK 0358	GUK 0461	GUK 0586	GUK 0796	GUK 07103	GUK 07108
Screen	single	double	single	double	single	single	double
Dia. over dielectric	.116" (2,95 mm)	.116" (2,95 mm)	.146" (3,7 mm)	.189" (4,8 mm)	.285" (7,25 mm)	.285" (7,25 mm)	.285" (7,25 mm)
O.D. of cable	.197" (5,0 mm)	.228" (5,8 mm)	.240" (6,1 mm)	.339" (8,6 mm)	.378" (9,6 mm)	.406" (10,3 mm)	.425" (10,8 mm)
Cable examples	RG-58 C/U	RG-223/U	RG-59 B/U	RG-6 A/U	RG-144/U-1	RG-213/U	RG-214/U



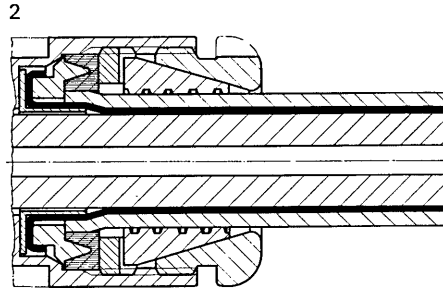
Cable-entry construction

Suitable tools are available for the assembly of FUK/GUK cable-entry construction (see 4.)

Example of ordering a plug with tear-proof cable-entry construction, with captive contact pin, for the 75 ohms cable RG-59 B/U:
11C-75-4-1C with GUK 0461

FK/GK Armour-Clamps

The FK/GK armour-clamps permit a neat and functional fitting of 'C' connectors to armoured cables. The FK/GK armour-clamps can be fitted to nearly all connector bodies (see illustration 4).



Cable-entry construction with FUK

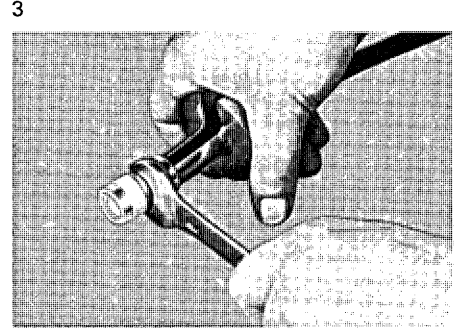
The following FK/GK armour-clamps are available:

FK 50 for armoured cable, dia. over sheath .197" (G 03243)

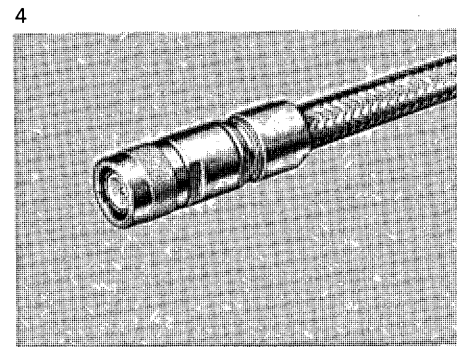
FK 61 for armoured cable, dia. over sheath .240" (G 04243)

GK 103 for armoured cable, dia. over sheath .406" (RG-215/U)

GK 220 for armoured cable, dia. over sheath .866" (RG-219/U)



Assembly of FUK cable-entry construction



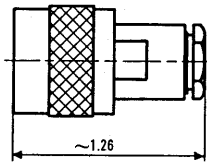
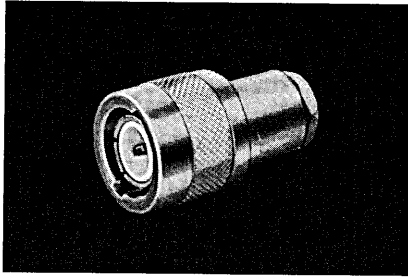
11C-50-7-3 with GK 103 fitted to cable RG-215/U

4. Tools

		Type number
Open-ended spanner	.433"/11 mm for cable-entry construction type 2, material thickness .118" (3 mm)	74 Z-0-0-2
Open-ended spanner	.630"/16 mm for cable-entry construction type 2, material thickness .158" (4 mm)	74 Z-0-0-3
Special tool	for FUK cable entries (illustration 3)	74 Z-0-0-4
Special tool	for GUK cable entries (illustration 3)	74 Z-0-0-5

Plug 50 Ω

for cable dia. up to .252"



Suhner Type	US-MIL-Type	NATO Type equivalent	centre contact	pressurized	cable				assembly instruction number	notes
					dia. max. in	dielectric dia. in	screen	example		
11C-50-3-4	UG-709B/U	5935-99-580-2595	loose		.209	.116	1	RG-58 C/U	3016	
11C-50-3-5C			captive		.209	.116	1	RG-58 C/U	3017	
11C-50-3-2C			captive		.236	.116	2	RG-223/U	3017	
11C-50-3-6C			captive		.181	.116	1	RG-141 A/U-1	3017	with cylindrical gasket
11C-50-4-1	UG-627B/U		loose		.252	.146	1	RG-59 B/U	3016	
11C-50-4-2C			captive		.252	.146	1	RG-59 B/U	3017	

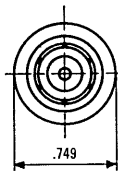
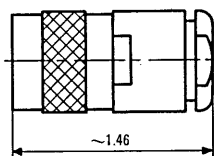
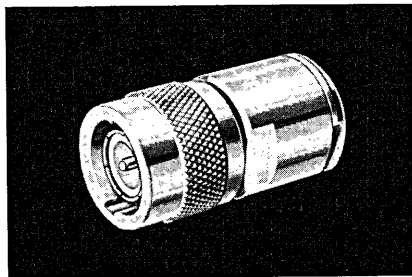
Plug 75 Ω

for cable dia. up to .272"

Suhner Type	US-MIL-Type	NATO Type equivalent	centre contact	pressurized	cable				assembly instruction number	notes
					dia. max. in	dielectric dia. in	screen	example		
11C-75-3-1C			captive		.209	.116	1	G 03233	3017	
11C-75-3-2C			captive		.236	.116	2	G 03233d	3017	
11C-75-4-1C			captive		.252	.146	1	RG-59 B/U	3017	
11C-75-4-2C			captive		.272	.146	2	G 04233d	3017	

Plug 50 Ω

for cable dia. up to .445"



Suhner Type	US-MIL-Type	NATO Type equivalent	centre contact	pressurized	cable				assembly instruction number	notes
					dia. max. in	dielectric dia. in	screen	example		
11C-50-5-1	UG-626 B/U	5935-99-972-1088	loose		.338	.189	2	RG-222/U	3044	
11C-50-5-2C			captive		.338	.189	2	RG-222/U	3045	
11C-50-7-3	UG-573 B/U similar	5935-99-932-5852	loose		.425	.285	1	RG-213/U	3007	
11C-50-7-4C		5935-99-580-7060	captive		.425	.285	1	RG-213/U	3008	
11C-50-7-5	UG-573 B/U		loose		.445	.285	2	RG-214/U	3007	
11C-50-7-6C			captive		.445	.285	2	RG-214/U	3008	
11C-50-7-9			loose		.390	.285	1	RG-165/U-1	3007	with cylindrical gasket
11C-50-7-10C			captive		.390	.285	1	RG-165/U-1	3008	

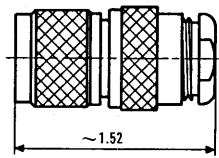
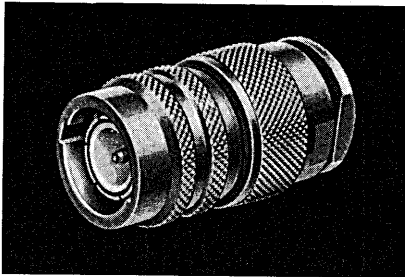
Plug 75 Ω

for cable dia. up to .445"

Suhner Type	US-MIL-Type	NATO Type equivalent	centre contact	pressurized	cable				assembly instruction number	notes
					dia. max. in	dielectric dia. in	screen	example		
11C-75-5-1C			captive		.338	.189	2	RG-6 A/U	3045	
11C-75-7-1		5935-99-920-9015	loose		.425	.285	1	RG-11 A/U	3007	
11C-75-7-2C		5935-99-952-1980	captive		.425	.285	1	RG-11 A/U	3008	
11C-75-7-3			loose		.445	.285	2	RG-216/U	3007	
11C-75-7-4C			captive		.445	.285	2	RG-216/U	3008	
11C-75-7-9			loose		.390	.285	1	RG-144/U-1	3007	with cylindrical gasket
11C-75-7-10C			captive		.390	.285	1	RG-144/U-1	3008	

Plug 50 Ω

with quick-screw locking device
for cable dia. up to .445"



Suhner Type	US-MIL-Type	NATO Type equivalent	centre contact	pressurized	cable				assembly instruction number	notes
					dia. max. in	dielectric dia. in	screen	example		
11C-50-7-1			loose		.425	.285	1	RG-213/U	3007	
11C-50-7-2C			captive		.425	.285	1	RG-213/U	3008	
11C-50-7-7			loose		.445	.285	2	RG-214/U	3007	
11C-50-7-8C			captive		.445	.285	2	RG-214/U	3008	

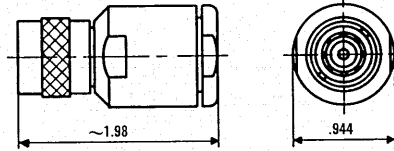
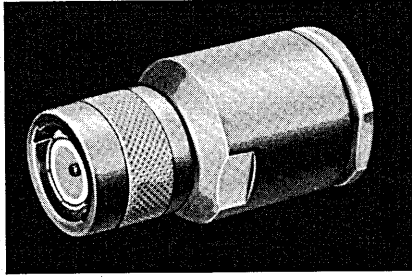
Plug 75 Ω

with quick-screw locking device
for cable dia. up to .445"

Suhner Type	US-MIL-Type	NATO Type equivalent	centre contact	pressurized	cable				assembly instruction number	notes
					dia. max. in	dielectric dia. in	screen	example		
11C-75-7-5			loose		.425	.285	1	RG-11 A/U	3007	
11C-75-7-6C			captive		.425	.285	1	RG-11 A/U	3008	
11C-75-7-7			loose		.445	.285	2	RG-216/U	3007	
11C-75-7-8C			captive		.445	.285	2	RG-216/U	3008	

Plug 50 Ω

for cable dia. up to .610"



Suhner Type	US-MIL-Type	NATO Type equivalent	centre contact	pressurized	cable				assembly instruction number	notes
					dia. max. in	dielectric dia. in	screen	example		
11C-50-9-2C	UG-707 B/U similar		captive		.563	.370	1	RG-217/U	3020	centre contact of UG-707 B/U is loose
11C-50-12-1			loose		.610	.453	1	G 12232	3019	with cylindrical gasket
11C-50-12-2C			captive		.610	.453	1	G 12232	3020	

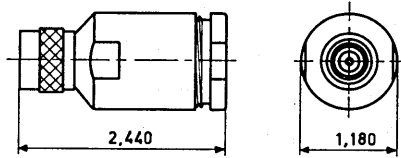
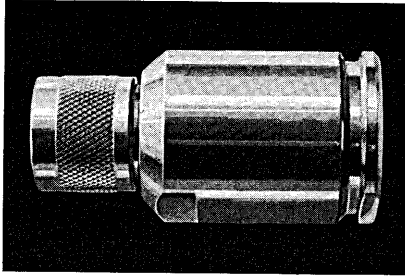
Plug 75 Ω

for cable dia. up to .610"

Suhner Type	US-MIL-Type	NATO Type equivalent	centre contact	pressurized	cable				assembly instruction number	notes
					dia. max. in	dielectric dia. in	screen	example		
11C-75-12-1			loose		.610	.453	1	G 12233	3019	with cylindrical gasket
11C-75-12-2C			captive		.610	.453	1	G 12233	3020	

Plug 50 Ω

for cable dia. up to .887"



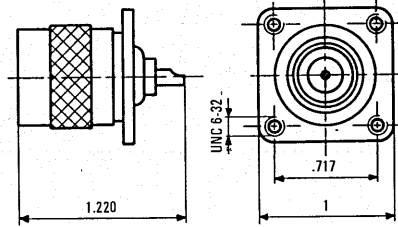
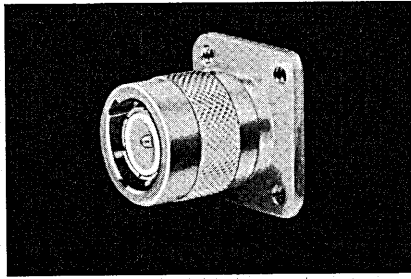
Suhner Type	US-MIL-Type	NATO Type equivalent	centre contact	pressurized	cable				assembly instruction number	notes
					dia. max. in	dielectric dia. in	screen	example		
11C-50-17-1C			captive		.887	.681	1	RG-218/U	3022	with quick screw locking device with cylindrical gasket
11C-50-17-2	UG-708 B/U similar	5935-99-901-6860	loose		.887	.681	1	RG-218/U	3021	with cylindrical gasket UG-708 B/U is 2.13" long
11C-50-17-3C			captive		.887	.681	1	RG-218/U	3022	with cylindrical gasket

Plug 75 Ω

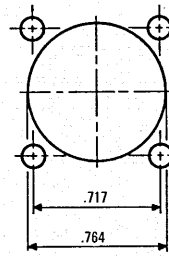
for cable dia. up to .887"

Suhner Type	US-MIL-Type	NATO Type equivalent	centre contact	pressurized	cable				assembly instruction number	notes
					dia. max. in	dielectric dia. in	screen	example		
11C-75-17-1C			captive		.887	.681	1	RG-164/U	3022	with quick screw locking device with cylindrical gasket
11C-75-17-2			loose		.887	.681	1	RG-164/U	3021	with cylindrical gasket
11C-75-17-3C			captive		.887	.681	1	RG-164/U	3022	

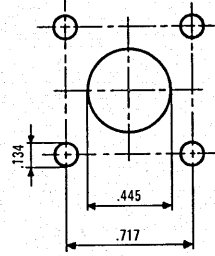
Male Panel Receptacle 50 Ω



rear panel mounting



front panel mounting



screws see page C.21

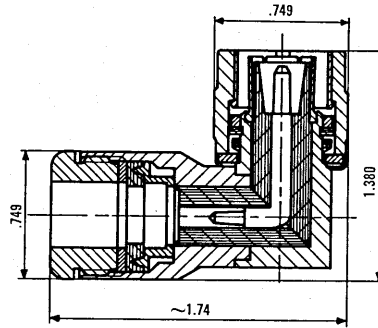
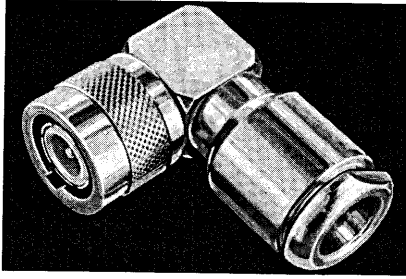
Suhner Type	US-MIL-Type	NATO Type equivalent	centre contact	pressurized	cable				assembly instruction number	notes
					dia. max. in	dielectric dia. in	screen	example		
13C-50-0-1										4 threaded holes UNC 6-32
13C-50-0-2										4 clearance holes dia. .134"

Male Panel Receptacle 75 Ω

Suhner Type	US-MIL-Type	NATO Type equivalent	centre contact	pressurized	cable				assembly instruction number	notes
					dia. max. in	dielectric dia. in	screen	example		
13C-75-0-1										4 threaded holes UNC 6-32
13C-75-0-2										4 clearance holes dia. .134"

Angle Plug 50 Ω

for cable dia. up to .445"



Suhner Type	US-MIL-Type	NATO Type equivalent	centre contact	pressurized	cable			example	assembly instruction number	notes
					dia. max. in	dielectric dia. in	screen			
16C-50-3-1			loose		.209	.116	1	RG-58 C/U	3044	fully teflon-insulated with cylindrical gasket
16C-50-3-2C			captive		.209	.116	1	RG-58 C/U	3045	
16C-50-3-3			loose		.236	.116	2	RG-223/U	3044	
16C-50-3-4C			captive		.236	.116	2	RG-223/U	3045	
16C-50-4-1			loose		.252	.146	1	RG-59 B/U	3044	
16C-50-4-2C			captive		.252	.146	1	RG-59 B/U	3045	
16C-50-5-1			loose		.338	.189	2	RG-222/U	3044	fully teflon-insulated
16C-50-5-2C			captive		.338	.189	2	RG-222/U	3045	
16C-50-7-2C		5935-99-972-4214	captive		.425	.285	1	RG-213/U	3009	partly air-insulated
16C-50-7-3C		5935-99-914-3033	captive		.445	.285	2	RG-214/U	3009	
16C-50-7-4	UG-710 B/U similar	5935-99-199-0832	loose		.425	.285	1	RG-213/U	3007	fully teflon-insulated
16C-50-7-5C		5935-99-580-7259	captive		.425	.285	1	RG-213/U	3008	
16C-50-7-6	UG-710 B/U		loose		.445	.285	2	RG-214/U	3007	
16C-50-7-7C			captive		.445	.285	2	RG-214/U	3008	

Angle Plug 75 Ω

for cable dia. up to .445"

Suhner Type	US-MIL-Type	NATO Type equivalent	centre contact	pressurized	cable			example	assembly instruction number	notes
					dia. max. in	dielectric dia. in	screen			
16C-75-3-1			loose		.209	.116	1	G 03233	3044	fully teflon-insulated with cylindrical gasket
16C-75-3-2C			captive		.209	.116	1	G 03233	3045	
16C-75-4-1			loose		.252	.146	1	RG-59 B/U	3044	
16C-75-4-2C			captive		.252	.146	1	RG-59 B/U	3045	

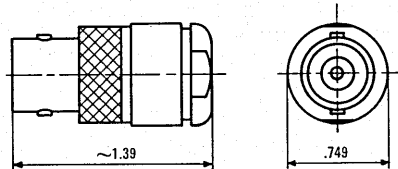
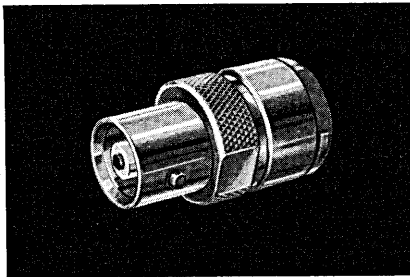
Continued on the following page

Angle Plug 50 Ω for cable dia. up to .445", continued

Suhner Type	US-MIL-Type	NATO Type equivalent	centre contact	pressurized	cable				assembly instruction number	notes
					dia. max. in	dielectric dia. in	screen	example		
16C-75-5-1			loose		.338	.189	2	RG-6 A/U	3044	fully teflon-insulated
16C-75-5-2C			captive		.338	.189	2	RG-6 A/U	3045	
16C-75-7-1C			captive		.425	.285	1	RG-11 A/U	3009	partly air-insulated
16C-75-7-2C			captive		.445	.285	2	RG-216/U	3009	
16C-75-7-3		5935-99-914-3033	loose		.425	.285	1	RG-11 A/U	3007	fully teflon-insulated
16C-75-7-4C		5935-99-955-5911	captive		.425	.285	1	RG-11 A/U	3008	
16C-75-7-5			loose		.445	.285	2	RG-216/U	3007	
16C-75-7-6C			captive		.445	.285	2	RG-216/U	3008	

Jack 75 Ω

for cable dia. up to .445"



Suhner Type	US-MIL-Type	NATO Type equivalent	centre contact	pressurized	cable				assembly instruction number	notes
					dia. max. in	dielectric dia. in	screen	example		
21C-50-3-1			loose		.209	.116	1	RG-58 C/U	3044	with cylindrical gasket
21C-50-3-2C			captive		.209	.116	1	RG-58 C/U	3045	
21C-50-3-3C			captive		.181	.116	1	RG-141-A/U-1	3045	
21C-50-3-4			loose		.236	.116	2	RG-223/U	3044	
21C-50-3-5C			captive		.236	.116	2	RG-223/U	3045	
21C-50-4-1			loose		.252	.146	1	RG-59 B/U	3044	
21C-50-4-2C			captive		.252	.146	1	RG-59 B/U	3045	
21C-50-5-1	UG-633A/U		loose		.338	.189	2	RG-222/U	3044	
21C-50-5-2C			captive		.338	.189	2	RG-222/U	3045	
21C-50-7-1	UG-572A/U similar	5935-99-199-0831	loose		.425	.285	1	RG-213/U	3007	
21C-50-7-2C			captive		.425	.285	1	RG-213/U	3008	
21C-50-7-3	UG-572A/U		loose		.445	.285	2	RG-214/U	3007	
21C-50-7-4C			captive		.445	.285	2	RG-214/U	3008	
21C-50-7-5			loose		.390	.285	1	RG-165/U-1	3007	with cylindrical gasket
21C-50-7-6C			captive		.390	.285	1	RG-165/U-1	3008	

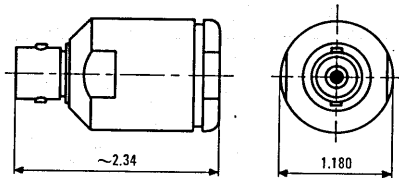
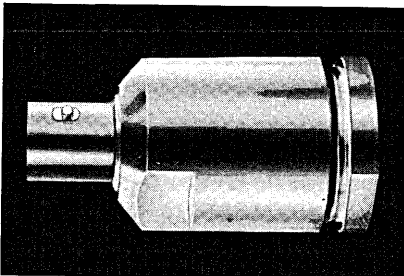
Jack 75 Ω

for cable dia. up to .445"

Suhner Type	US-MIL-Type	NATO Type equivalent	centre contact	pressurized	cable				assembly instruction number	notes
					dia. max. in	dielectric dia. in	screen	example		
21C-75-3-1C			captive		.209	.116	1	G 03233	3045	with cylindrical gasket
21C-75-3-2C			captive		.236	.116	2	G 03233d	3045	
21C-75-4-1C			captive		.252	.146	1	RG-59 B/U	3045	
21C-75-5-1C			captive		.338	.189	2	RG-6 A/U	3045	
21C-75-7-1		5935-99-580-1134	loose		.425	.285	1	RG-11 A/U	3007	
21C-75-7-2C			captive		.425	.285	1	RG-11 A/U	3008	
21C-75-7-3			loose		.445	.285	2	RG-216/U	3007	
21C-75-7-4C			captive		.445	.285	2	RG-216/U	3008	
21C-75-7-5			loose		.390	.285	1	RG-144/U-1	3007	with cylindrical gasket
21C-75-7-6C			captive		.390	.285	1	RG-144/U-1	3008	

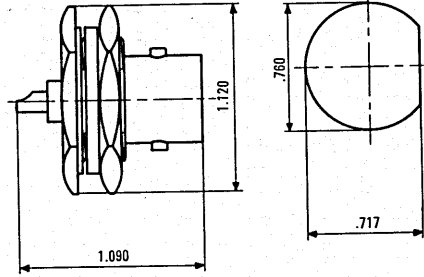
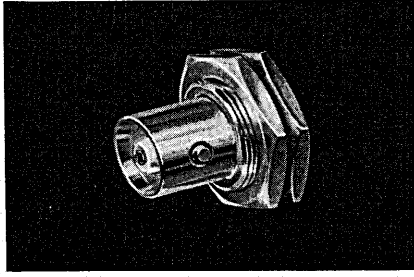
Jack 50 Ω

for cable dia. up to .885"



Suhner Type	US-MIL-Type	NATO Type equivalent	centre contact	pressurized	cable				assembly instruction number	notes
					dia. max. in	dielectric dia. in	screen	example		
21C-50-17-1C			captive		.885	.682	1	RG-218/U	3022	with cylindrical gasket

Bulkhead Receptacle 50 Ω

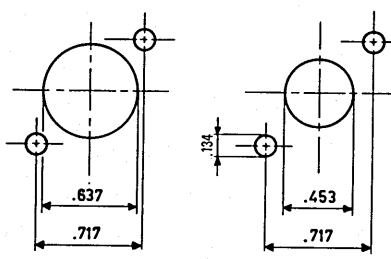
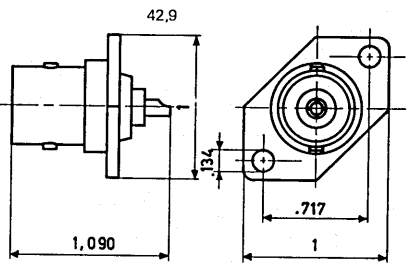
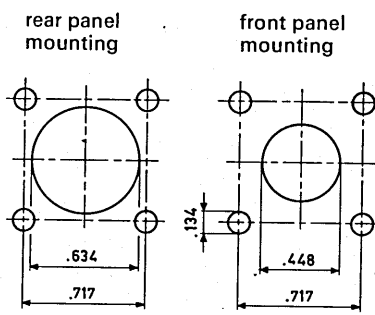
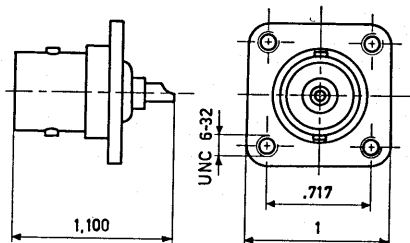
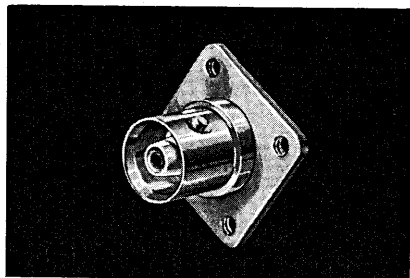


Suhner Type	US-MIL-Type	NATO Type equivalent	centre contact	pressurized	cable				assembly instruction number	notes
					dia. max. in	dielectric dia. in	screen	example		
22C-50-0-3	UG-569A/U UG-705A/U similar	5935-99-949-4332		yes						panel thickness max. .099"

Bulkhead Receptacle 75 Ω

Suhner Type	US-MIL-Type	NATO Type equivalent	centre contact	pressurized	cable				assembly instruction number	notes
					dia. max. in	dielectric dia. in	screen	example		
22C-75-0-2		5935-99-900-3186		yes						panel thickness max. .099"

Panel Receptacle 50 Ω



screws see page C.21

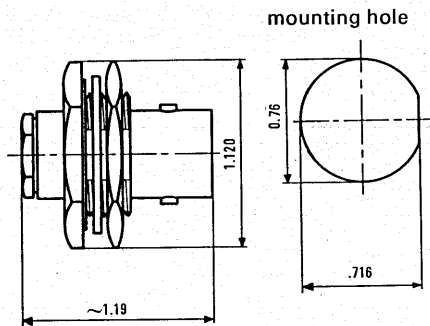
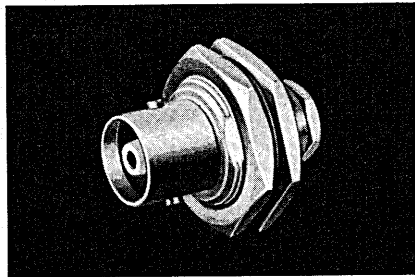
Suhner Type	US-MIL-Type	NATO Type equivalent	centre contact	pressurized	cable				assembly instruction number	notes
					dia. max. in	dielectric dia. in	screen	example		
23C-50-0-1	UG-568/U	5935-99-920-9029								4 threaded holes UNC 6-32
23C-50-0-2		5935-99-999-6236								4 clearance holes dia. .134"
23C-50-0-3										2 threaded holes UNC 6-32, flange narrow, hexagonal
23C-50-0-4		5935-99-914-9616								2 clearance holes dia. .134" flange narrow, hexagonal

Panel Receptacle 75 Ω

Suhner Type	US-MIL-Type	NATO Type equivalent	centre contact	pressurized	cable				assembly instruction number	notes
					dia. max. in	dielectric dia. in	screen	example		
23C-75-0-1		5935-99-911-6888								4 threaded holes UNC 6-32
23C-75-0-2		5935-99-913-8550								4 clearance holes dia. .134"
23C-75-0-3										2 threaded holes UNC 6-32, flange narrow, hexagonal
23C-75-0-4		5935-99-952-1401								2 clearance holes dia. .134" flange narrow, hexagonal

Bulkhead Jack 50 Ω

cable dia. up to .252"



Suhner Type	US-MIL-Type	NATO Type equivalent	centre contact	pressurized	cable				assembly instruction number	notes
					dia. max. in	dielectric dia. in	screen	example		
24C-50-3-1C	UG-704 B/U similar		captive	yes	.209	.116	1	RG-58 C/U	3017	panel thickness max. .138" mounting hole of UG-704 B/U $\frac{5}{8}$ " dia.
24C-50-3-2C			captive	yes	.236	.116	2	RG-223/U	3017	panel thickness max. .138"
24C-50-4-1C	UG-631 A/U similar	5935-99-972-1087	captive	yes	.252	.146	1	RG-59 B/U	3017	panel thickness max. .138", centre contact of UG-631 A/U is loose

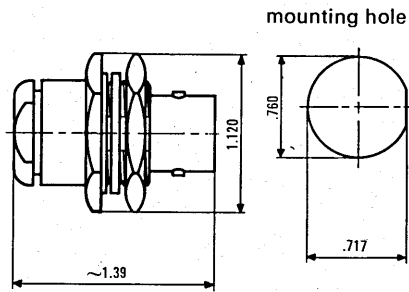
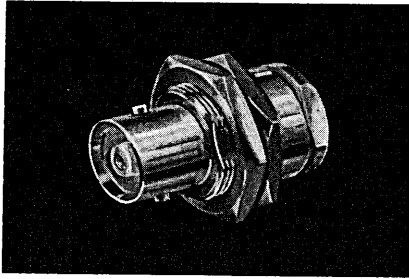
Bulkhead Jack 75 Ω

cable dia. up to .252"

Suhner Type	US-MIL-Type	NATO Type equivalent	centre contact	pressurized	cable				assembly instruction number	notes
					dia. max. in	dielectric dia. in	screen	example		
24C-75-3-1C			captive	yes	.209	.116	1	G 03233	3017	panel thickness max. .138"
24C-75-3-2C			captive	yes	.236	.116	2	G 03233d	3017	
24C-75-4-1C			captive	yes	.252	.146	1	RG-59 B/U	3017	

Bulkhead Jack 50 Ω

cable dia. up to .445"



Suhner Type	US-MIL-Type	NATO Type equivalent	centre contact	pressurized	cable				assembly instruction number	notes
					dia. max. in	dielectric dia. in	screen	example		
24C-50-5-1C	UG-630 A/U similar		captive	yes	.338	.189	2	RG-222/U	3045	panel thickness max. .138"; centre contact of UG-630 A/U is loose
24C-50-7-1	UG-570 A/U similar		loose		.425	.285	1	RG-213/U	3007	
24C-50-7-2C			captive	yes	.425	.285	1	RG-213/U	3008	
24C-50-7-3	UG-570 A/U	5935-99-999-1667	loose		.445	.285	2	RG-214/U	3007	
24C-50-7-4C			captive	yes	.445	.285	2	RG-214/U	3008	
24C-50-7-5			loose		.390	.285	1	RG-165/U-1	3007	panel thickness max. .138" with cylindrical gasket
24C-50-7-6C			captive	yes	.390	.285	1	RG-165/U-1	3008	

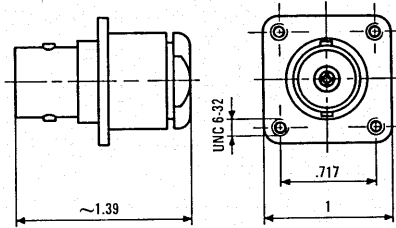
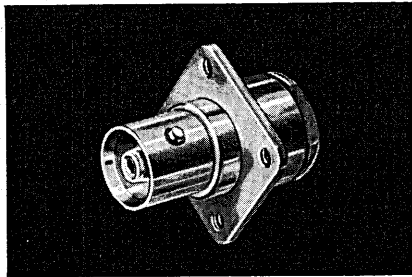
Bulkhead Jack 75 Ω

cable dia. up to .445"

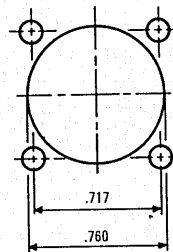
Suhner Type	US-MIL-Type	NATO Type equivalent	centre contact	pressurized	cable				assembly instruction number	notes
					dia. max. in	dielectric dia. in	screen	example		
24C-75-5-1C			captive	yes	.338	.189	2	RG-6 A/U	3045	panel thickness max. .138"
24C-75-7-1			loose		.425	.285	1	RG-11 A/U	3007	
24C-75-7-2C			captive	yes	.425	.285	1	RG-11 A/U	3008	
24C-75-7-3			loose		.445	.285	2	RG-216/U	3007	
24C-75-7-4C			captive	yes	.445	.285	2	RG-216/U	3008	
24C-75-7-5			loose		.390	.285	1	RG-144/U-1	3007	panel thickness max. .138" with cylindrical gasket
24C-75-7-6C			captive	yes	.390	.285	1	RG-144/U-1	3008	

Panel Jack 50 Ω

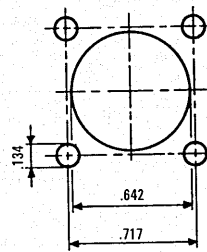
cable dia. up to .445"



front panel mounting



rear pane mounting



screws see page C.21

Suhner Type	US-MIL-Type	NATO Type equivalent	centre contact	pressurized	cable			example	assembly instruction number	notes
					dia. max. in	dielectric dia. in	screen			
25C-50-3-1C			captive		.209	.116	1	RG-58 C/U	3045	4 threaded holes UNC 6-32 with cylindrical gasket
25C-50-3-3C			captive		.236	.116	2	RG-223/U	3045	
25C-50-4-1C			captive		.252	.146	1	RG-59 B/U	3045	
25C-50-5-1	UG-629 A/U		loose		.338	.189	2	RG-222/U	3044	
25C-50-5-2C			captive		.338	.189	2	RG-222/U	3045	4 threaded holes UNC 6-32
25C-50-7-1	UG-571 A/U similar	5935-99-932-5853	loose		.425	.285	1	RG-213/U	3007	
25C-50-7-2C			captive		.425	.285	1	RG-213/U	3008	
25C-50-7-3	UG-571 A/U		loose		.445	.285	2	RG-214/U	3007	
25C-50-7-4C			captive		.445	.285	2	RG-214/U	3008	4 clearance holes dia. .134" with cylindrical gasket
25C-50-3-2C			captive		.209	.116	1	RG-58 C/U	3045	
25C-50-3-4C			captive		.236	.116	2	RG-223/U	3045	
25C-50-4-2C			captive		.252	.146	1	RG-59 B/U	3045	
25C-50-5-3			loose		.338	.189	2	RG-222/U	3044	4 clearance holes dia. .134"
25C-50-5-4C			captive		.338	.189	2	RG-222/U	3045	
25C-50-7-5		5935-99-946-7620	loose		.425	.285	1	RG-213/U	3007	
25C-50-7-6C		5935-99-519-3630	captive		.425	.285	1	RG-213/U	3008	
25C-50-7-7			loose		.445	.285	2	RG-214/U	3007	4 clearance holes dia. .134"
25C-50-7-8C			captive		.445	.285	2	RG-214/U	3008	

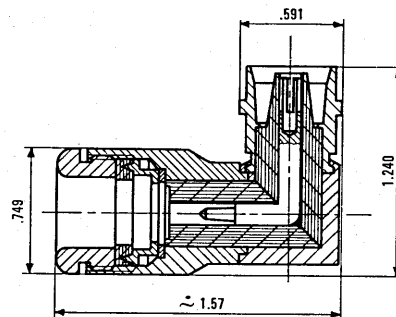
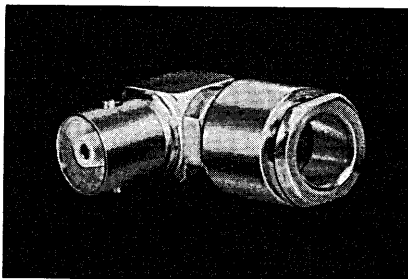
Panel Jack 75 Ω

cable dia. up to .445"

Suhner Type	US-MIL-Type	NATO Type equivalent	centre contact	pressurized	cable				assembly instruction number	notes
					dia. max. in	dielectric dia. in	screen	example		
25C-75-3-1C			captive		.209	.116	1	G 03233	3045	4 threaded holes UNC 6-32 with cylindrical gasket
25C-75-3-3C			captive		.236	.116	2	G 03233d	3045	
25C-75-4-1C			captive		.252	.145	1	RG-59 B/U	3045	
25C-75-5-1			loose		.338	.189	2	RG-6 A/U	3044	4 threaded holes UNC 6-32
25C-75-5-2C			captive		.338	.189	2	RG-6 A/U	3045	
25C-75-7-1		5935-99-932-5646	loose		.425	.285	1	RG-11 A/U	3007	
25C-75-7-2C			captive		.425	.285	1	RG-11 A/U	3008	4 clearance holes dia. .134" with cylindrical gasket
25C-75-7-3			loose		.445	.285	2	RG-216/U	3007	
25C-75-7-4C			captive		.445	.285	2	RG-216/U	3008	
25C-75-3-2C			captive		.209	.116	1	G 03233	3045	4 clearance holes dia. .134" with cylindrical gasket
25C-75-3-4C			captive		.236	.116	2	G 03233d	3045	
25C-75-4-2C			captive		.252	.145	1	RG-59 B/U	3045	
25C-75-5-3			loose		.338	.189	2	RG-6 A/U	3044	4 clearance holes dia. .134"
25C-75-5-4C			captive		.338	.189	2	RG-6 A/U	3008	
25C-75-7-5		5935-99-199-0830	loose		.425	.285	1	RG-11 A/U	3007	
25C-75-7-6C			captive		.425	.285	1	RG-11 A/U	3008	4 clearance holes dia. .134"
25C-75-7-7			loose		.445	.285	2	RG-216/U	3007	
25C-75-7-8C			captive		.445	.285	2	RG-216/U	3008	

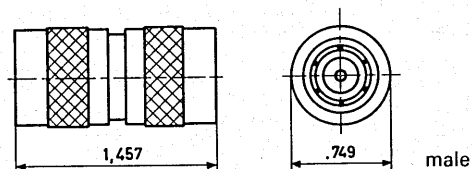
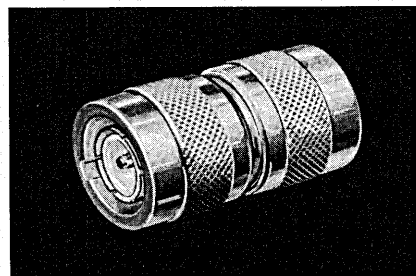
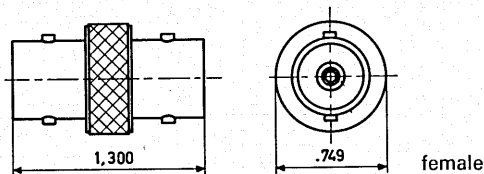
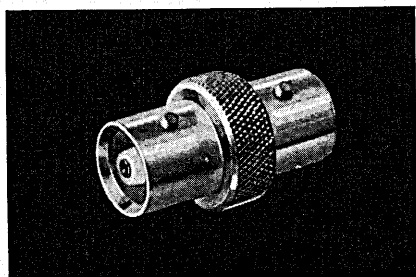
Angle Jack 50 Ω

fully teflon-insulated



Suhner Type	US-MIL-Type	NATO Type equivalent	centre contact	pressurized	cable				assembly instruction number	notes
					dia. max. in	dielectric dia. in	screen	example		
26C-50-7-1			loose		.425	.285	1	RG-213/U	3007	
26C-50-7-2			loose		.445	.285	2	RG-214/U	3007	

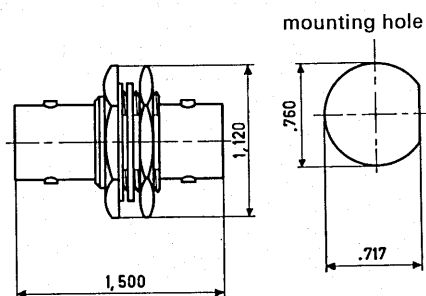
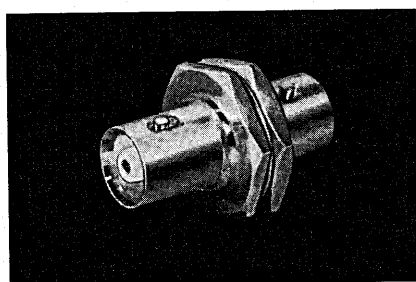
Straight Adapter 50 and 75 Ω



Suhner Type	US-MIL-Type	NATO Type equivalent	centre contact	pressurized	cable				assembly instruction number	notes
					dia. max. in	dielectric dia. in	screen	example		
31C-50-0-1	UG-643/U	5935-99-580-1512								50 Ω, female
31C-75-0-1		5935-99-199-0827								75 Ω, female
32C-50-0-1	UG-642 A/U	5935-99-580-1326								50 Ω, male
32C-75-0-1		5935-99-913-1018								75 Ω, male

Bulkhead Adapter 50 and 75 Ω

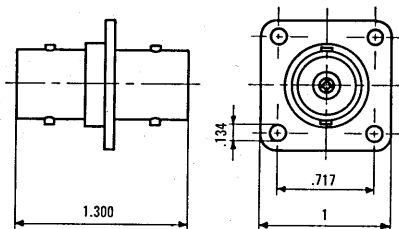
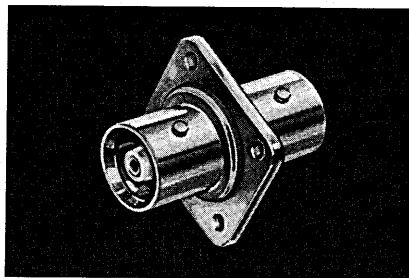
female



Suhner Type	US-MIL-Type	NATO Type equivalent	centre contact	pressurized	cable				assembly instruction number	notes
					dia. max. in	dielectric dia. in	screen	example		
34C-50-0-1	UG-701/U	5935-99-911-8080		yes						50 Ω panel thickness max. .099"
34C-75-0-1		5935-99-944-7377		yes						75 Ω panel thickness max. .099"

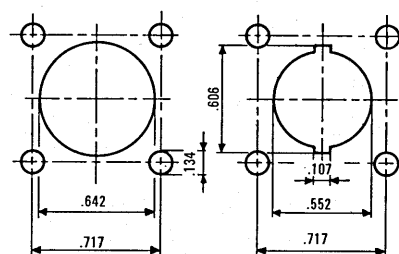
Panel Adapter 50 and 75 Ω

female



rear panel mounting

front panel mounting

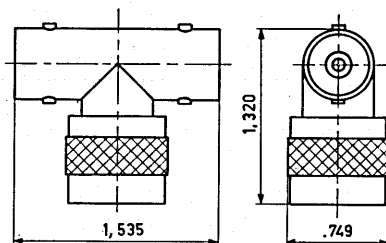
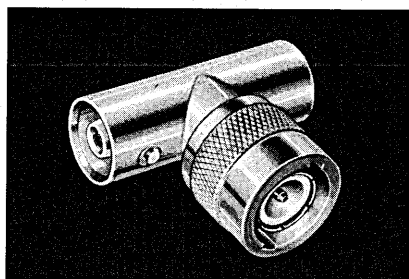


screws see page C.21

Suhner Type	US-MIL-Type	NATO Type equivalent	centre contact	pressurized	cable				assembly instruction number	notes
					dia. max. in	dielectric dia. in	screen	example		
37C-50-0-1		5935-99-920-9223								50 Ω; 4 threaded holes UNC 6-32
37C-50-0-2		5935-99-580-6268								50 Ω; 4 clearance holes dia. .134"
37C-75-0-1										75 Ω; 4 threaded holes UNC 6-32
37C-75-0-2										75 Ω; 4 clearance holes dia. .134"

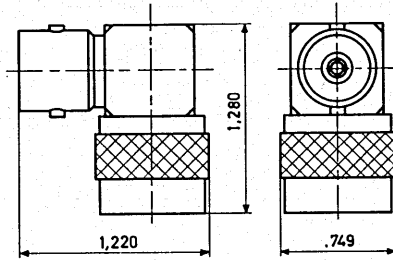
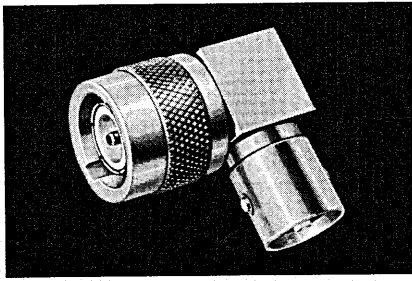
T-Adapter 50 and 75 Ω

2×female, 1×male



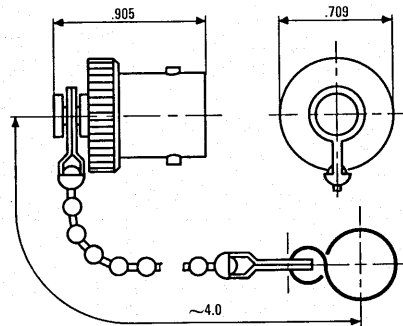
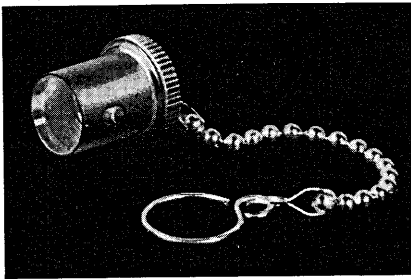
Suhner Type	US-MIL-Type	NATO Type equivalent	centre contact	pressurized	cable				assembly instruction number	notes
					dia. max. in	dielectric dia. in	screen	example		
43C-50-0-1	UG-566 A/U	5935-99-972-2384								50 Ω
43C-75-0-1										75 Ω

Angle Adapter 50 and 75 Ω

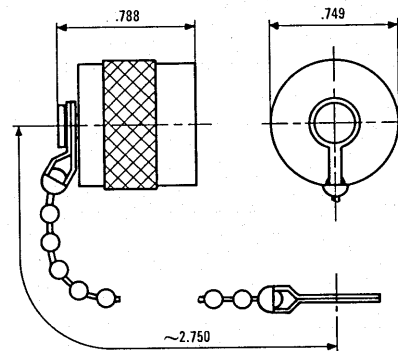
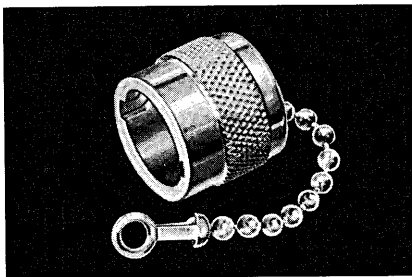


Suhner Type	US-MIL-Type	NATO Type equivalent	centre contact	pressurized	cable			assembly instruction number	notes
					dia. max. in	dielectric dia. in	screen example		
53C-50-0-1	UG-567A/U	5935-99-920-9000							50 Ω, male-female
53C-75-0-1									75 Ω, male-female

Caps



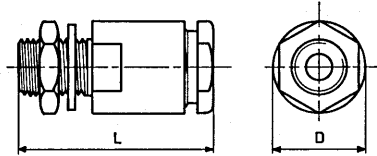
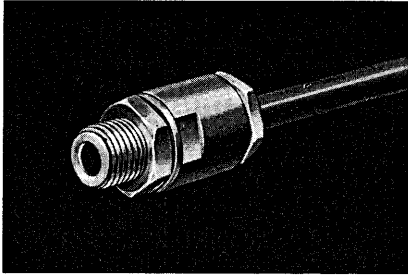
for male connectors



for female connectors other chain lengths on request

Suhner Type	US-MIL-Type	NATO Type equivalent	centre contact	pressurized	cable			assembly instruction number	notes
					dia. max. in	dielectric dia. in	screen example		
61C-0-0-1	MX-1143 A/U	5935-99-105-4678							for male connectors, with chain and ring
62C-0-0-1	MX-1142 A/U	5935-99-580-1133							for female connectors, with chain and end clip

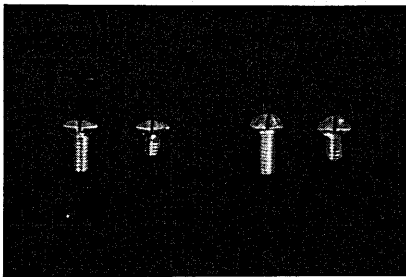
Cable Feed-Through



Suhner Type	US-MIL-Type	NATO Type equivalent	centre contact	pressurized	cable				assembly instruction number	notes
					dia. max. in	dielectric dia. in	screen	example		
71Z-0-3-3	MX-1684/U				.209	.116	1	RG-58 C/U G 03233	3004*	thread length .394" mounting hole .315 dia. L = ~1.0" D = .50"
71Z-0-3-4					.236	.116	1	RG-223/U	3004*	
71Z-0-3-5					.181	.116	1	RG-141A/U-1	3004*	
71Z-0-4-3					.252	.146	1	RG-59 B/U	3004*	thread length .374" mounting hole .512 dia. L = ~1.14" D = .748"
71Z-0-5-1					.338	.189	2	RG-6 A/U RG-222/U	3007*	
71Z-0-7-2					.425	.285	1	RG-213/U RG-11 A/U	3007*	
71Z-0-7-3					.445	.285	2	RG-214/U RG-216/U	3007*	
71Z-0-7-4					.390	.285	1	RG-165/U-1 RG-144/U-1	3007*	
										* use dimensions for jacket and screen

Silvered Screws

thread UNC 6-32



Suhner Type	US-MIL-Type	NATO Type equivalent	centre contact	pressurized	cable				assembly instruction number	notes
					dia. max. in	dielectric dia. in	screen	example		
73Z-0-0-5										round head, thread length .157"
73Z-0-0-6										round head, thread length .236"
73Z-0-0-7										countersunk lens-head, length .236"

Between Series Adapters

"C 50 Ω male" means
that the adapter's C-end
is male.

Suhner Type	from	to
33C-A-0-1	C 50 Ω male	banana jack .158" dia.
33C-UHF-0-1	C 50 Ω male	UHF female
33UHF-C-0-1	C 50 Ω female	UHF male
31C-UHF-0-1	C 50 Ω female	UHF female
32C-UHF-0-1	C 50 Ω male	UHF male
33C-UHF-0-2	C 75 Ω male	UHF female
33UHF-C-0-2	C 75 Ω female	UHF male
31C-UHF-0-2	C 75 Ω female	UHF female
32C-UHF-0-2	C 75 Ω male	UHF male
33C-N-50-1	C 50 Ω male	N 50 Ω female
33N-C-50-1	C 50 Ω female	N 50 Ω male
31C-N-50-1	C 50 Ω female	N 50 Ω female
32C-N-50-1	C 50 Ω male	N 50 Ω male
33C-N-75-1	C 75 Ω male	N 75 Ω female
33N-C-75-1	C 75 Ω female	N 75 Ω male
31C-N-75-1	C 75 Ω female	N 75 Ω female
32C-N-75-1	C 75 Ω male	N 75 Ω male
33C-BNC-50-1	C 50 Ω male	BNC 50 Ω female
33BNC-C-50-1	C 50 Ω female	BNC 50 Ω male
31BNC-C-50-1	C 50 Ω female	BNC 50 Ω female
32BNC-C-50-1	C 50 Ω male	BNC 50 Ω male
33C-BNC-75-1	C 75 Ω male	BNC 75 Ω female
33BNC-C-75-1	C 75 Ω female	BNC 75 Ω male
31BNC-C-75-1	C 75 Ω female	BNC 75 Ω female
32BNC-C-75-1	C 75 Ω male	BNC 75 Ω male

Suhner Type	from	to
33C-J-75-1	C 75 Ω male	I 75 Ω female
33J-C-75-1	C 75 Ω female	I 75 Ω male
31C-J-75-1	C 75 Ω female	I 75 Ω female
32C-J-75-1	C 75 Ω male	I 75 Ω male
33C-M-50-1	C 50 Ω male	M 50 Ω female
33M-C-50-1	C 50 Ω female	M 50 Ω male
31C-M-50-1	C 50 Ω female	M 50 Ω female
32C-M-50-1	C 50 Ω male	M 50 Ω male
33C-M-75-1	C 75 Ω male	M 75 Ω female
33M-C-75-1	C 75 Ω female	M 75 Ω male
31C-M-75-1	C 75 Ω female	M 75 Ω female
32C-M-75-1	C 75 Ω male	M 75 Ω male
33C-K-50-1	C 50 Ω male	K 50 Ω female
33K-C-50-1	C 50 Ω female	K 50 Ω male
31C-K-50-1	C 50 Ω female	K 50 Ω female
32C-K-50-1	C 50 Ω male	K 50 Ω male
33C-SC-50-1	C 50 Ω male	SC 50 Ω female
33SC-C-50-1	C 50 Ω female	SC 50 Ω male
31C-SC-50-1	C 50 Ω female	SC 50 Ω female
32C-SC-50-1	C 50 Ω male	SC 50 Ω male
33C-TNC-50-1	C 50 Ω male	TNC 50 Ω female
33TNC-C-50-1	C 50 Ω female	TNC 50 Ω male
31C-TNC-50-1	C 50 Ω female	TNC 50 Ω female
32C-TNC-50-1	C 50 Ω male	TNC 50 Ω male
33C-TNC-75-1	C 75 Ω male	TNC 75 Ω female
33TNC-C-75-1	C 75 Ω female	TNC 75 Ω male
31C-TNC-75-1	C 75 Ω female	TNC 75 Ω female
32C-TNC-75-1	C 75 Ω male	TNC 75 Ω male