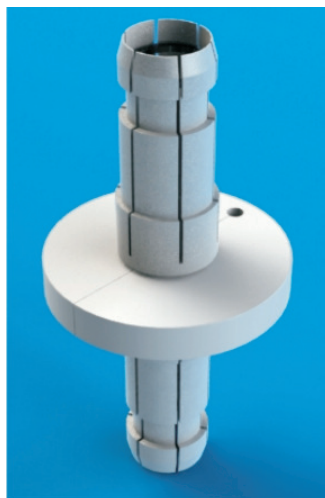
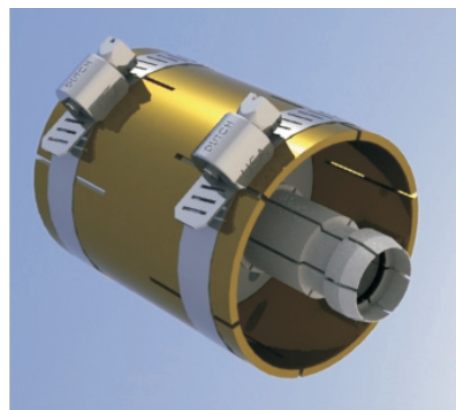


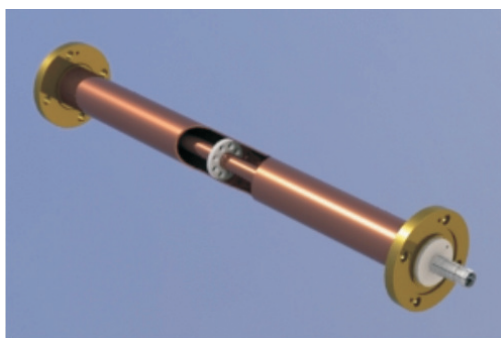
RL 158.14



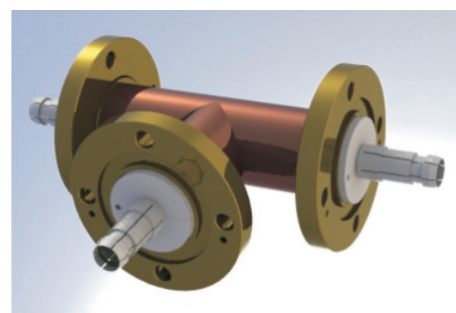
RL 158.35



RL 158.32

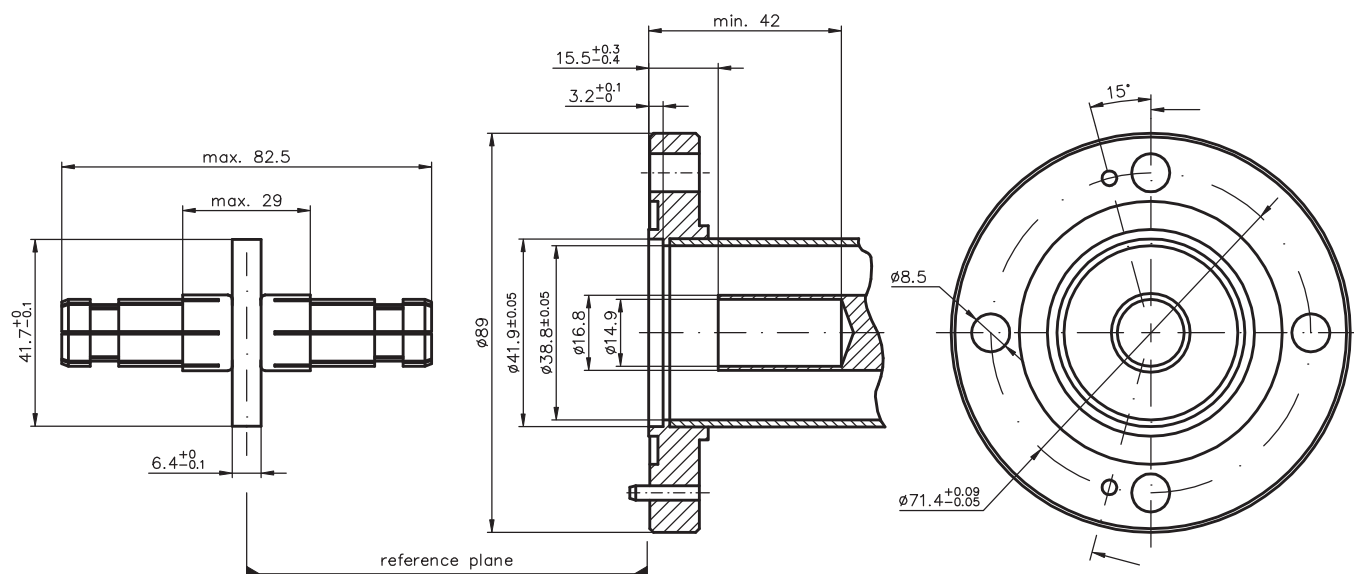


RL 158.01



RL 158.19

Outer Conductor: high conductivity hard drawn copper tubing  
( $\varnothing 41.3$  mm. x  $\varnothing 38.8$  mm. )  
Inner Conductor: high conductivity hard drawn copper tubing  
( $\varnothing 16.9$  mm. x  $\varnothing 14.9$  mm. )  
Insulation Material: virgin PTFE



\* All dimensions shown are in millimeters.  
\* Drawings not to scale.

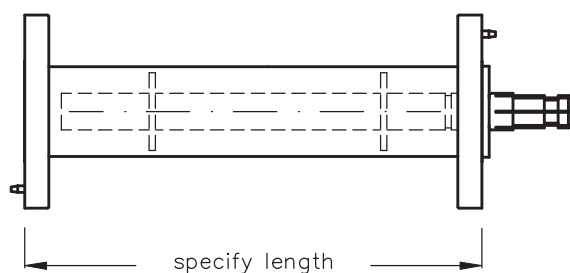
Mating Face Dimension - 1 5/8"  
(EIA standard RS-225)



## Rigid Transmission Line Components

1 5/8"- 50  $\Omega$

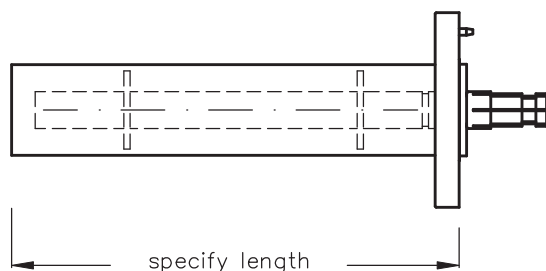
Line size 1 5/8"



Line assembly, flanged with fixed and swivel flange. Brass and copper construction. Includes one anchor insulator conductor connector, silicone O-ring and stainless steel hardware set.

RL 158.01

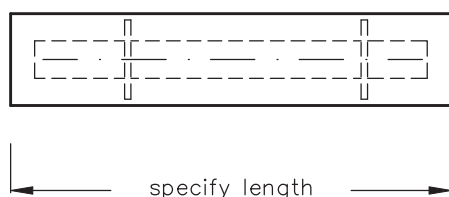
Line size 1 5/8"



Line assembly, one end fixed flanged. Includes one anchor insulator conductor connector, silicone O-ring and stainless steel hardware set.

RL 158.02

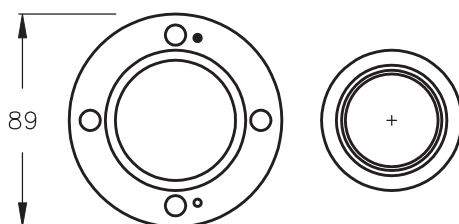
Line size 1 5/8"



Line assembly, unflanged, no insulator conductor connector or hardware.

RL 158.04

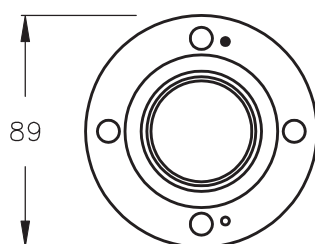
Line size 1 5/8"



Swivel EIA flange, brass. Includes only sliding and fixed ring prepared for silver brazing to outer conducting tubing.

RL 158.06

Line size 1 5/8"



Fixed EIA flange prepared for silver brazing to outer conducting tubing.

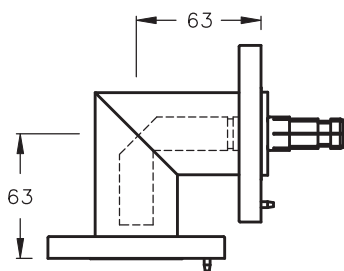
RL 158.08



\* All dimensions shown are in millimeters.  
\* Drawings not to scale.



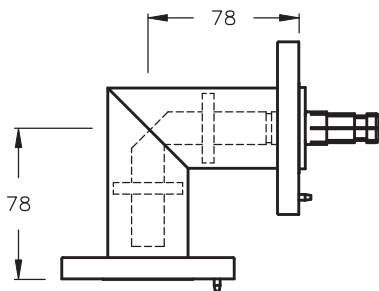
Line size 1 5/8"



Miter elbow 90°, swivel EIA flanges on both ends, brass and copper construction. Includes unsupported inner conductor, one anchor insulator conductor connector, silicone O-ring and stainless steel hardware set.

**RL 158.11**

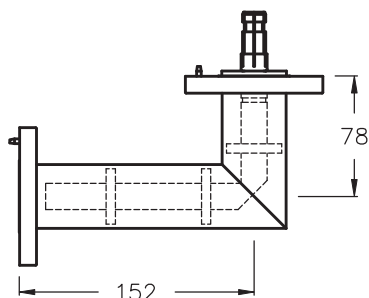
Line size 1 5/8"



Miter elbow 90°, swivel EIA flanges on both ends, brass and copper construction. Includes supported inner conductor, anchor insulator conductor connector, silicone O-ring and stainless steel hardware set.

**RL 158.14**

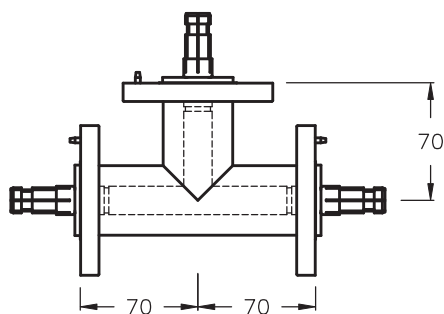
Line size 1 5/8"



Miter elbow 90°-unequal legs, swivel EIA flanges on both ends, brass and copper construction. Includes supported inner conductor, one anchor insulator conductor connector, silicone O-ring and stainless steel hardware set.

**RL 158.16**

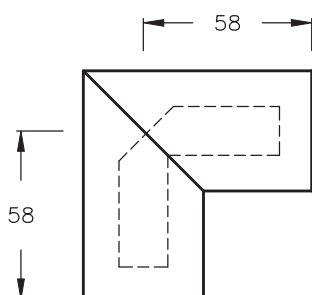
Line size 1 5/8"



Tee assembly, swivel EIA flanges. Includes three anchor insulator connectors, O-rings and hardware sets.

**RL 158.19**

Line size 1 5/8"



Miter elbow 90°-unflanged, copper construction. Includes only one unsupported inner conductor.

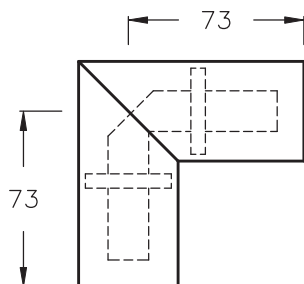
**RL 158.22**



\* All dimensions shown are in millimeters.  
\* Drawings not to scale.



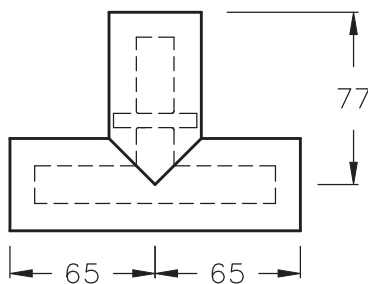
Line size 1 5/8"



Miter elbow 90°-unflanged, long legs, copper construction. Includes only one supported inner conductor.

**RL 158.25**

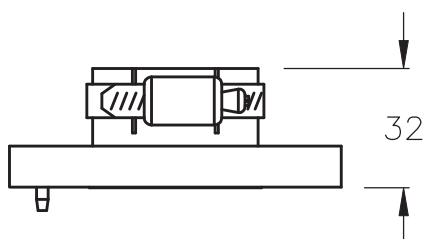
Line size 1 5/8"



Tee assembly, unflanged, copper construction. Includes only supported inner conductor.

**RL 158.28**

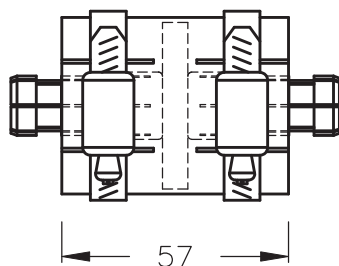
Line size 1 5/8"



Unpressurized EIA field flange for indoor use. Includes one stainless steel hose clamp and hardware set.

**RL 158.30**

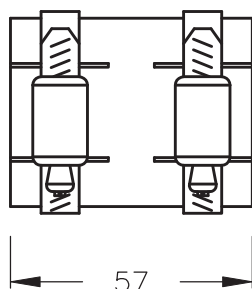
Line size 1 5/8"



Line coupling for connection of unflanged lines. Includes supported inner conductor connector and two stainless steel hose clamps.

**RL 158.32**

Line size 1 5/8"



Line coupling for connection of unflanged lines. No inner conductor connector. Includes two stainless steel hose clamps (does not increase outer conductor length).

**RL 158.33**

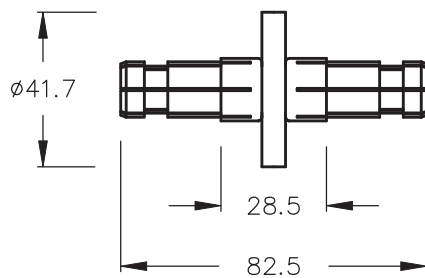


\* All dimensions shown are in millimeters.

\* Drawings not to scale.



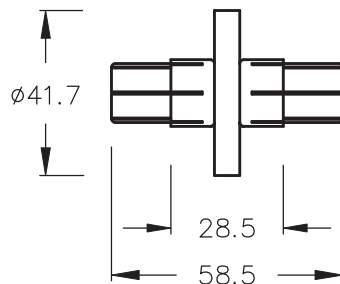
Line size 1 5/8"



Anchor insulator conductor connector, for EIA flange connection, silver plated. **Standard length.**

RL 158.35

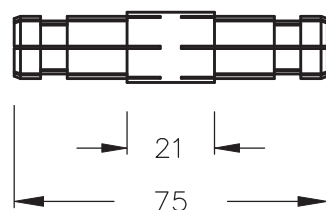
Line size 1 5/8"



Anchor insulator conductor connector, for EIA flange connection, silver plated. **Short version.**

RL 158.36

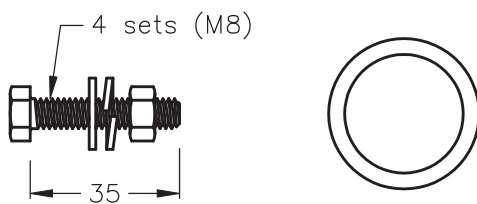
Line size 1 5/8"



Unsupported inner conductor connector.

RL 158.40

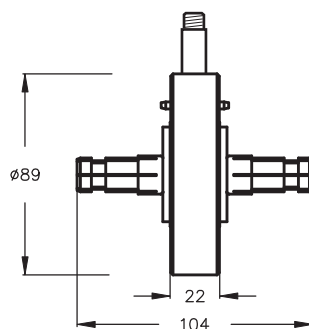
Line size 1 5/8"



Stainless steel hardware set with silicone rubber O-ring.

RL 158.45

Line size 1 5/8"

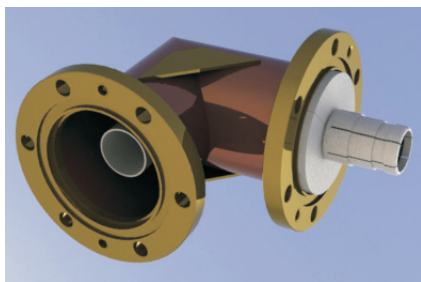


Gas barrier with silicone O-ring and stainless steel hardware set.

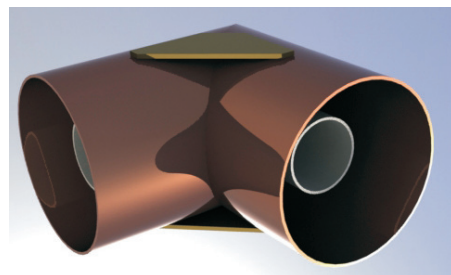
RL 158.50



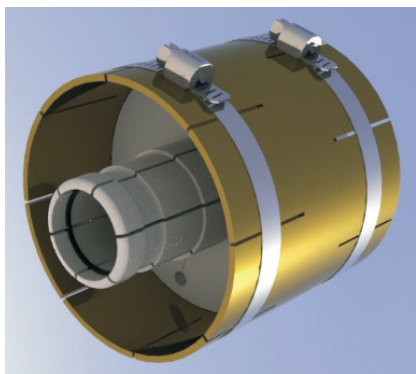
\* All dimensions shown are in millimeters.  
\* Drawings not to scale.



RL 318.11



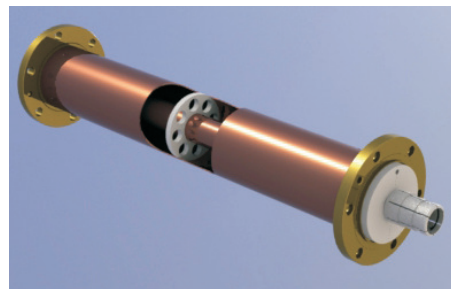
RL 318.22



RL 318.32

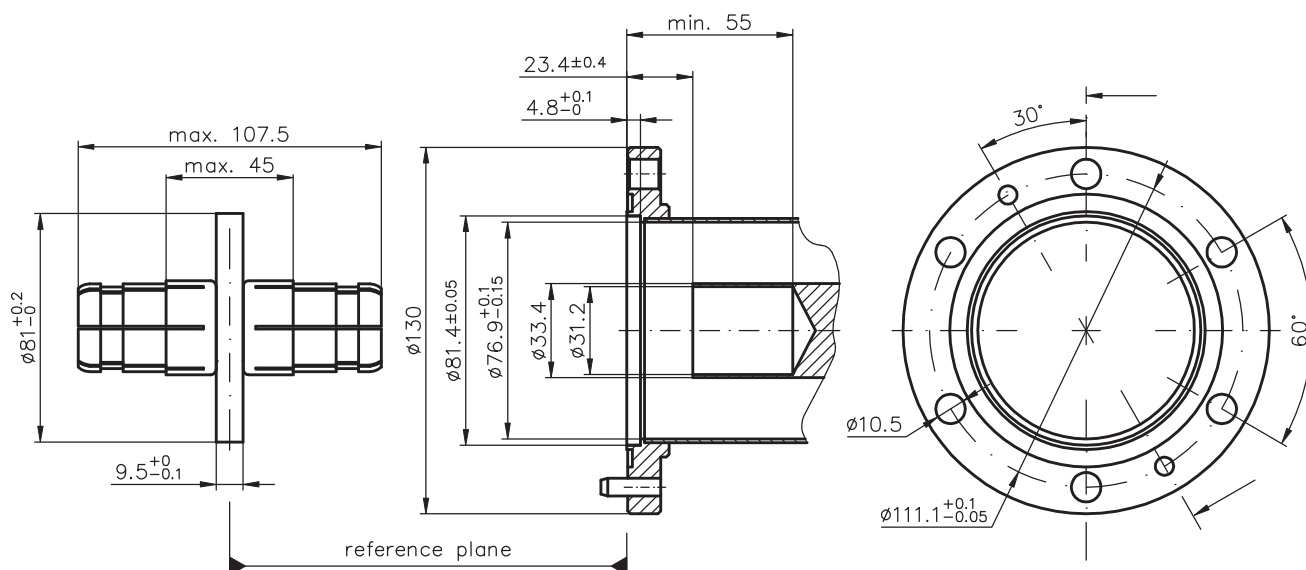


RL 318.35



RL 318.01

Outer Conductor: high conductivity hard drawn copper tubing  
( $\varnothing$  79.4 mm. x  $\varnothing$  76.9 mm.)  
Inner Conductor: high conductivity hard drawn copper tubing  
( $\varnothing$  33.4 mm. x  $\varnothing$  31.3 mm.)  
Insulation Material: virgin PTFE

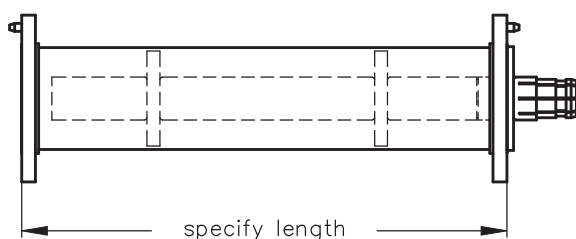


\* All dimensions shown are in millimeters.  
\* Drawings not to scale.

**Mating Face Dimension - 3 1/8"**  
(EIA standard RS-225)



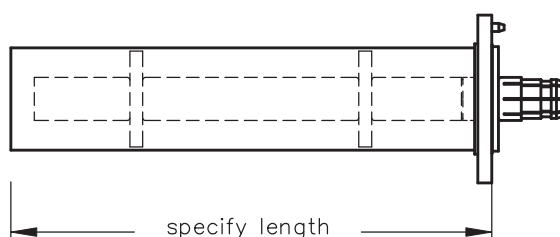
Line size 3 1/8"



Line assembly, flanged with fixed and swivel flange. Brass and copper construction. Includes one anchor insulator conductor connector, silicone O-ring and stainless steel hardware set.

**RL 318.01**

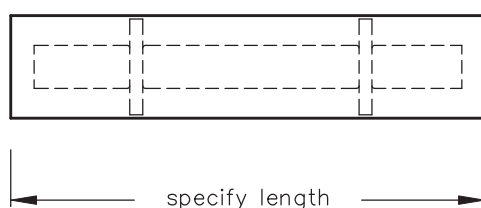
Line size 3 1/8"



Line assembly, one end fixed flanged. Includes one anchor insulator conductor connector, silicone O-ring and stainless steel hardware set.

**RL 318.02**

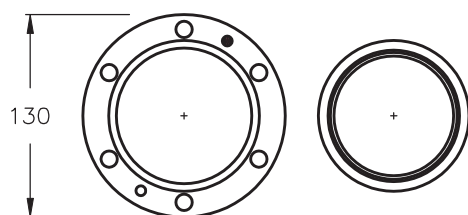
Line size 3 1/8"



Line assembly, unflanged, no insulator conductor connector or hardware.

**RL 318.04**

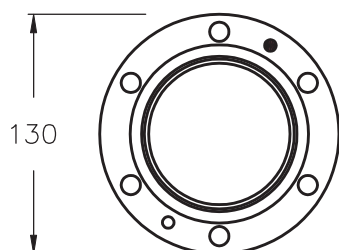
Line size 3 1/8"



Swivel EIA flange, brass. Includes only sliding and fixed ring prepared for silver brazing to outer conducting tubing.

**RL 318.06**

Line size 3 1/8"



Fixed EIA flange with silver solder ring insert for silver brazing to outer conducting tubing.

**RL 318.08**



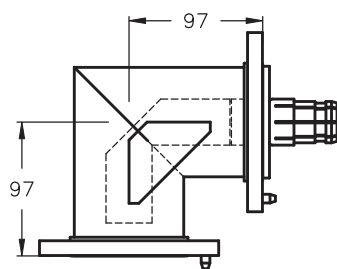
\* All dimensions shown are in millimeters.

\* Drawings not to scale.





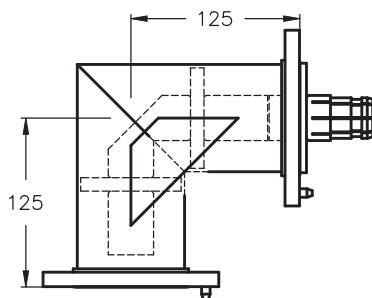
Line size 3 1/8"



Miter elbow 90°, swivel EIA flanges on both ends, reinforced outside, brass and copper construction. Includes unsupported inner conductor, one anchor insulator conductor connector, silicone O-ring and stainless steel hardware set.

**RL 318.11**

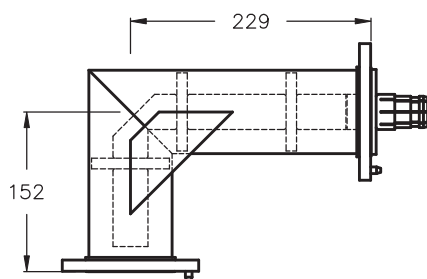
Line size 3 1/8"



Miter elbow 90°, swivel EIA flanges on both ends, reinforced outside, brass and copper construction. Includes supported inner conductor, anchor insulator conductor connector, silicone O-ring and stainless steel hardware set.

**RL 318.14**

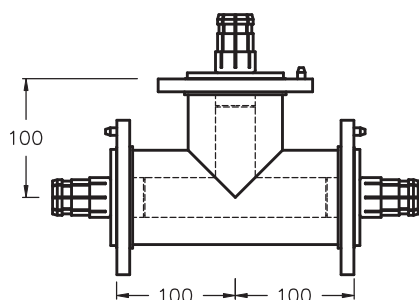
Line size 3 1/8"



Miter elbow 90°-unequal legs, swivel EIA flanges on both ends, reinforced outside, brass and copper construction. Includes supported inner conductor, one anchor insulator conductor connector, silicone O-ring and stainless steel hardware set.

**RL 318.16**

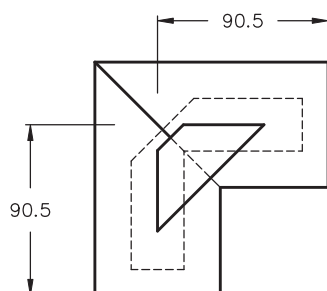
Line size 3 1/8"



Tee assembly, swivel EIA flanges. Includes three anchor insulator connectors, O-rings and hardware sets.

**RL 318.19**

Line size 3 1/8"



Miter elbow 90°-unflanged, reinforced outside, copper construction. Includes only one unsupported inner conductor.

**RL 318.22**

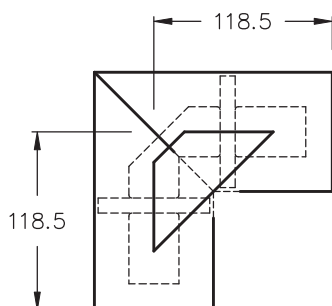


\* All dimensions shown are in millimeters.  
\* Drawings not to scale.





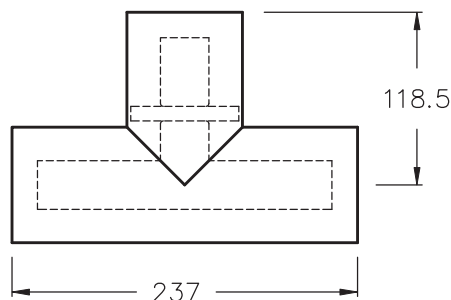
Line size 3 1/8"



Miter elbow 90°-unflanged, long legs, reinforced outside, copper construction. Includes only one supported inner conductor.

**RL 318.25**

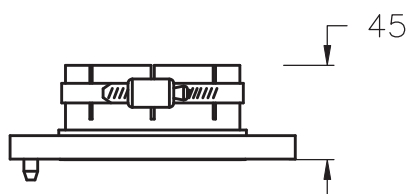
Line size 3 1/8"



Tee assembly, unflanged, copper construction. Includes only supported inner conductor.

**RL 318.28**

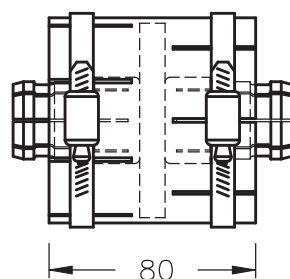
Line size 3 1/8"



Unpressurized EIA field flange for indoor use. Includes one stainless steel hose clamp and hardware set.

**RL 318.30**

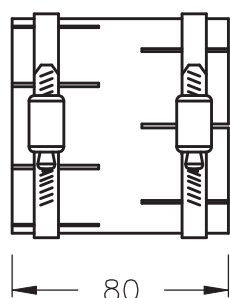
Line size 3 1/8"



Line coupling for connection of unflanged lines. Includes supported inner conductor connector and two stainless steel hose clamps.

**RL 318.32**

Line size 3 1/8"



Line coupling for connection of unflanged lines. No inner conductor connector. Includes two stainless steel hose clamps (does not increase outer conductor length).

**RL 318.33**

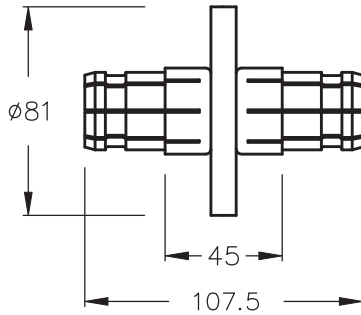


\* All dimensions shown are in millimeters.

\* Drawings not to scale.



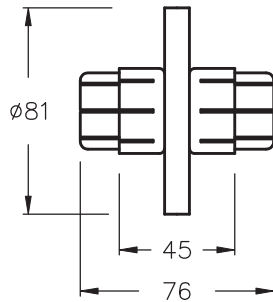
Line size 3 1/8"



Anchor insulator conductor connector, for EIA flange connection, silver plated. **Standard length.**

**RL 318.35**

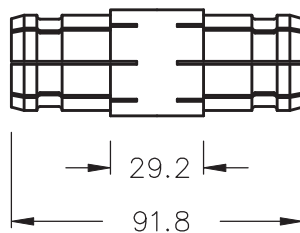
Line size 3 1/8"



Anchor insulator conductor connector, for EIA flange connection, silver plated. **Short version.**

**RL 318.36**

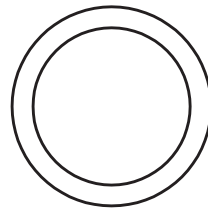
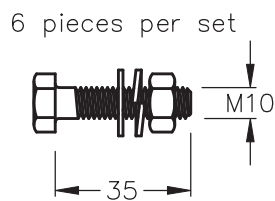
Line size 3 1/8"



Unsupported inner conductor connector.

**RL 318. 40**

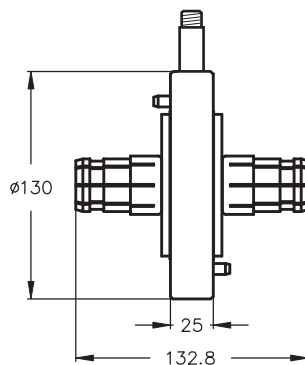
Line size 3 1/8"



Stainless steel hardware set with silicone rubber O-ring.

**RL 318.45**

Line size 3 1/8"

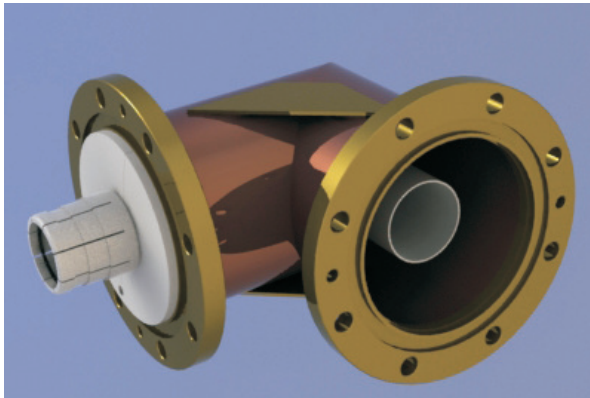


Gas barrier with silicone O-ring and stainless steel hardware set.

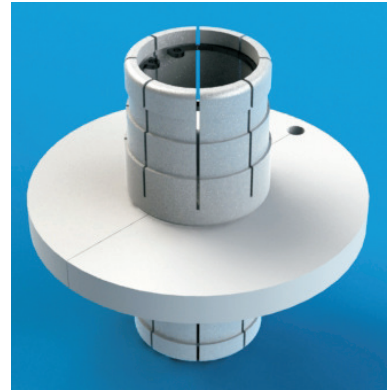
**RL 318.50**



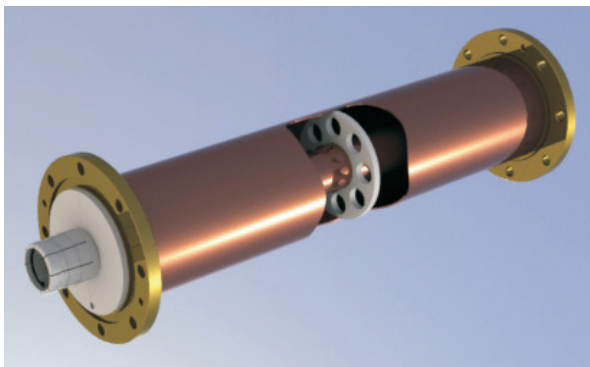
\* All dimensions shown are in millimeters.  
\* Drawings not to scale.



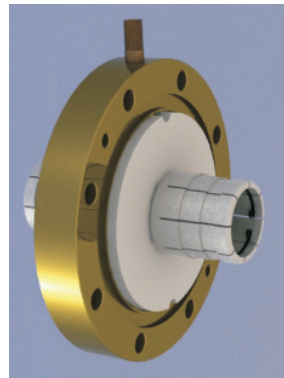
RL 412.11



RL 412.35

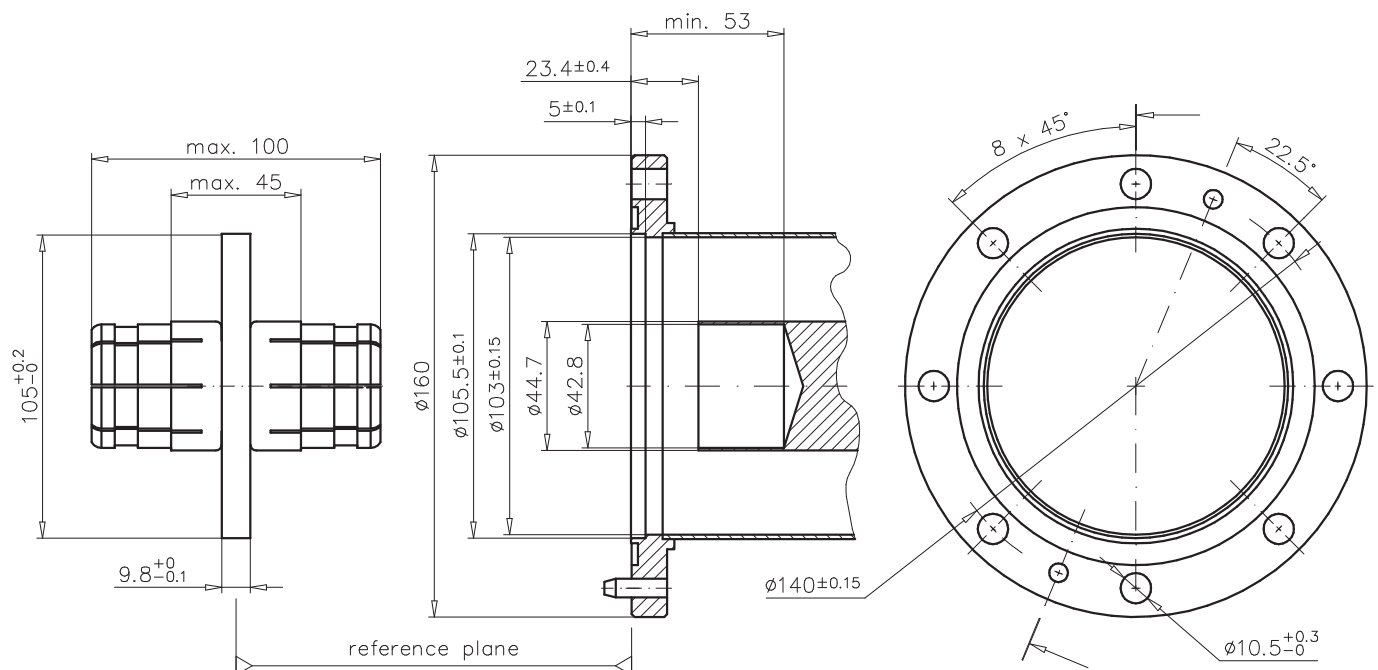


RL 412.01



RL 412.50

- Outer Conductor: high conductivity hard drawn copper tubing  
( $\varnothing$  106 mm. x  $\varnothing$  103 mm. )
- Inner Conductor: high conductivity hard drawn copper tubing  
( $\varnothing$  44.7 mm. x  $\varnothing$  42.8 mm. )
- Insulation Material: virgin PTFE



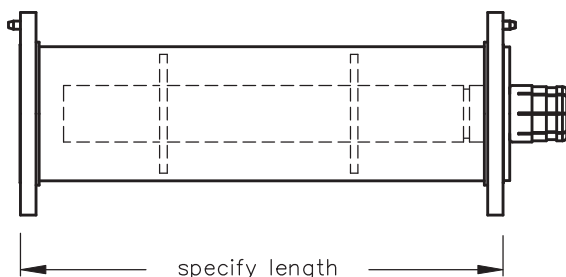
Mating Face Dimension - 4 1/2"



- \* All dimensions shown are in millimeters.
- \* Drawings not to scale.



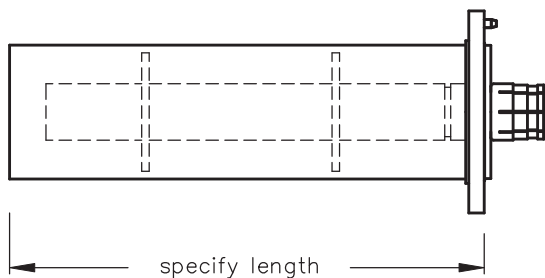
Line size 4 1/2"



Line assembly, flanged with fixed and swivel flange. Brass and copper construction. Includes one anchor insulator conductor connector, silicone O-ring and stainless steel hardware set.

**RL 412.01**

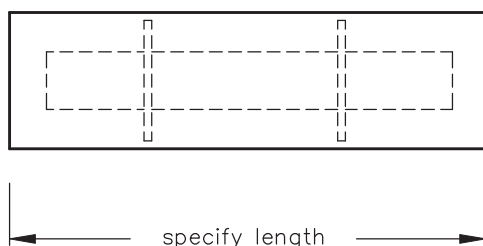
Line size 4 1/2"



Line assembly, one end fixed flanged. Includes one anchor insulator conductor connector, silicone O-ring and stainless steel hardware set.

**RL 412.02**

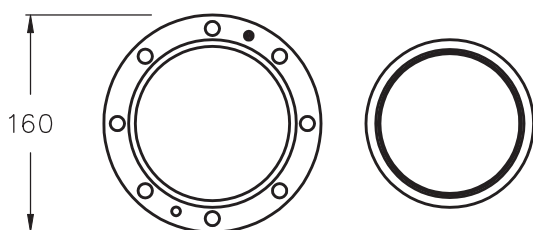
Line size 4 1/2"



Line assembly, unflanged, no insulator conductor connector or hardware.

**RL 412.04**

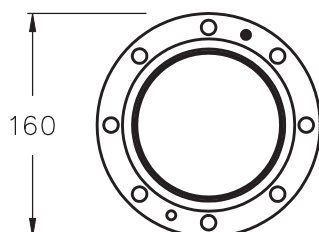
Line size 4 1/2"



Swivel EIA flange, brass. Includes only sliding and fixed ring prepared for silver brazing to outer conducting tubing.

**RL 412.06**

Line size 4 1/2"



Fixed EIA flange with silver solder ring insert for silver brazing to outer conducting tubing.

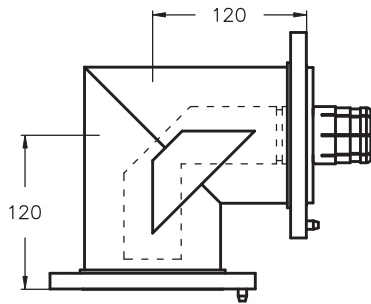
**RL 412.08**



\* All dimensions shown are in millimeters.  
\* Drawings not to scale.



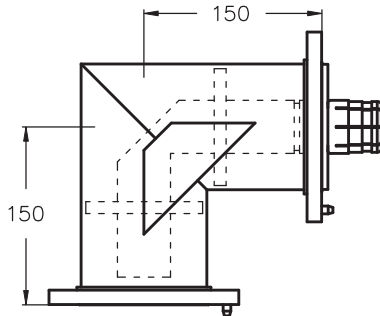
Line size 4 1/2 "



Miter elbow 90°, swivel EIA flanges on both ends, reinforced outside, brass and copper construction. Includes unsupported inner conductor, one anchor insulator conductor connector, silicone O-ring and stainless steel hardware set.

**RL 412.11**

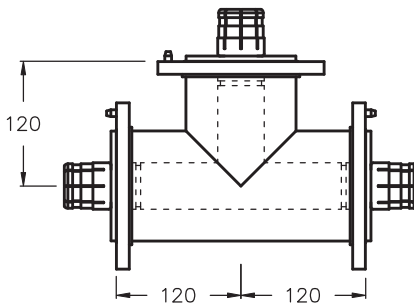
Line size 4 1/2 "



Miter elbow 90°, swivel EIA flanges on both ends, reinforced outside, brass and copper construction. Includes supported inner conductor, anchor insulator conductor connector, silicone O-ring and stainless steel hardware set.

**RL 412.14**

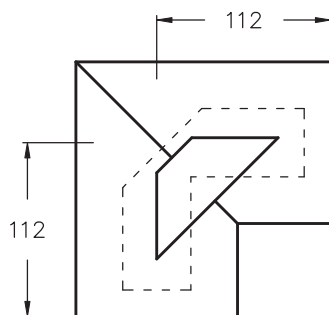
Line size 4 1/2 "



Tee assembly, swivel EIA flanges. Includes three anchor insulator connectors, O-rings and hardware sets.

**RL 412.19**

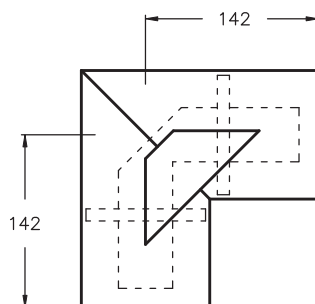
Line size 4 1/2 "



Miter elbow 90°-unflanged, reinforced outside, copper construction. Includes only one unsupported inner conductor.

**RL 412.22**

Line size 4 1/2 "



Miter elbow 90°-unflanged, long legs, reinforced outside, copper construction. Includes only one supported inner conductor.

**RL 412.25**

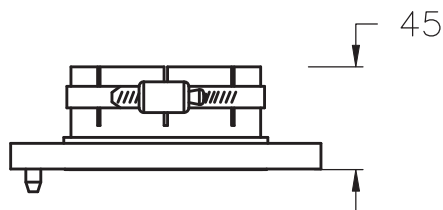


\* All dimensions shown are in millimeters.

\* Drawings not to scale.



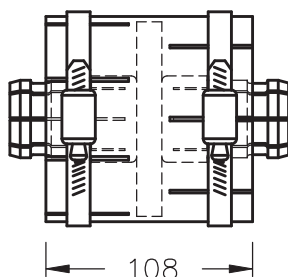
Line size 4 1/2"



Unpressurized EIA field flange for indoor use. Includes one stainless steel hose clamp and hardware set.

RL 412.30

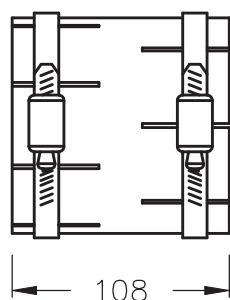
Line size 4 1/2"



Line coupling for connection of unflanged lines. Includes supported inner conductor connector and two stainless steel hose clamps.

RL 412.32

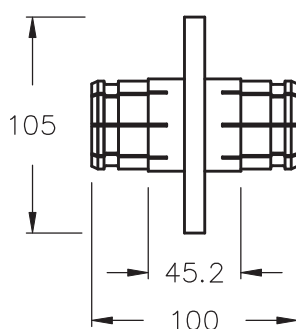
Line size 4 1/2"



Line coupling for connection of unflanged lines. No inner conductor connector. Includes two stainless steel hose clamps (does not increase outer conductor length).

RL 412.33

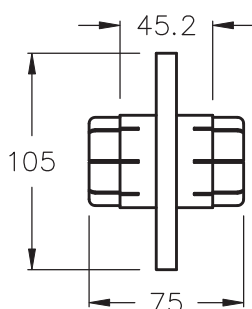
Line size 4 1/2"



Anchor insulator conductor connector, for EIA flange connection, silver plated. **Standard length.**

RL 412.35

Line size 4 1/2"



Anchor insulator conductor connector, for EIA flange connection, silver plated. **Short version.**

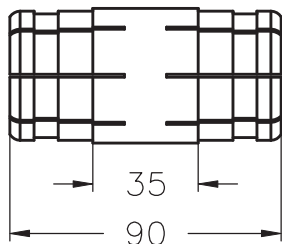
RL 412.36



\* All dimensions shown are in millimeters.  
\* Drawings not to scale.



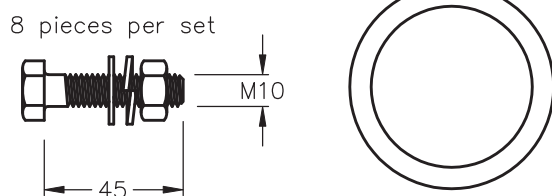
Line size 4 1/2 "



Unsupported inner conductor connector.

RL 412.40

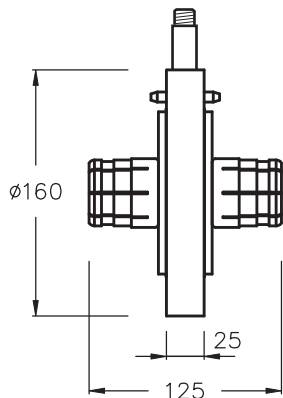
Line size 4 1/2 "



Stainless steel hardware set with silicone rubber O-ring.

RL 412.45

Line size 4 1/2 "



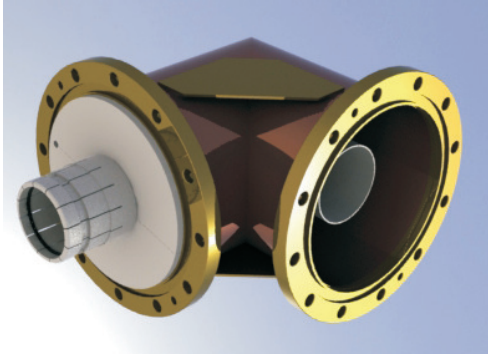
Gas barrier with silicone O-ring and stainless steel hardware set.

RL 412.50

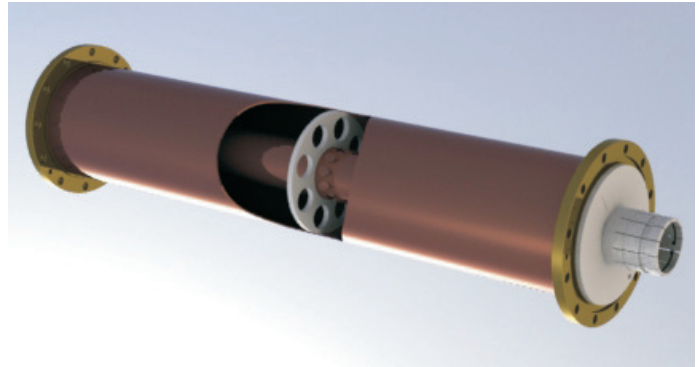


\* All dimensions shown are in millimeters.  
\* Drawings not to scale.





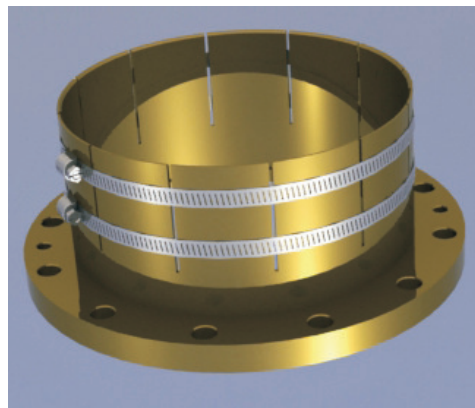
RL 618.11



RL 618.01

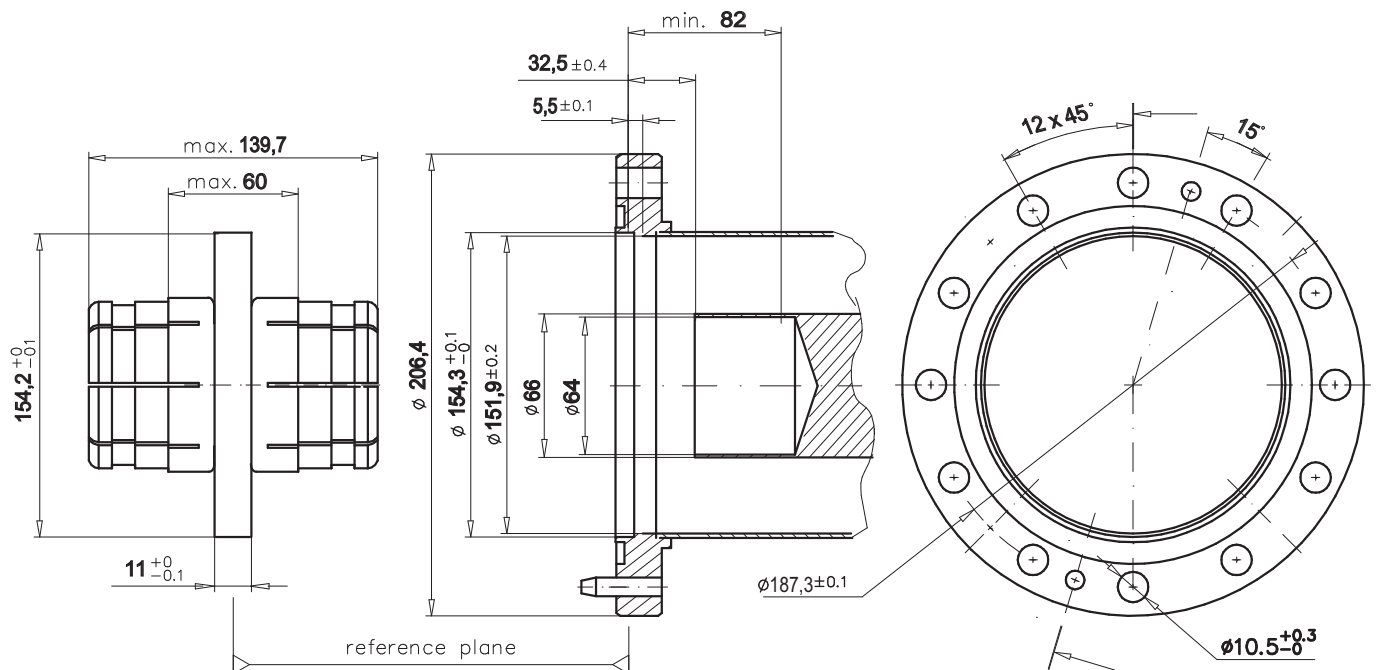


RL 618.35



RL 618.50

- Outer Conductor: high conductivity hard drawn copper tubing  
( $\varnothing$  155,6 mm. x  $\varnothing$  151,9 mm.)
- Inner Conductor: high conductivity hard drawn copper tubing  
( $\varnothing$  66 mm. x  $\varnothing$  64 mm.)
- Insulation Material: virgin PTFE



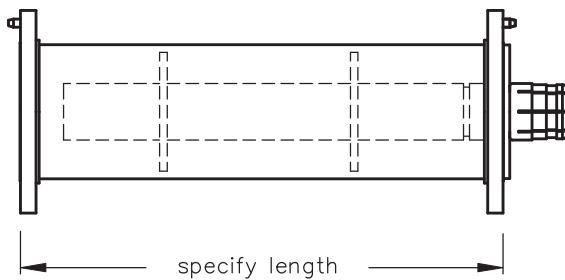
Mating Face Dimension - 6 1/8"



- \* All dimensions shown are in millimeters.
- \* Drawings not to scale.



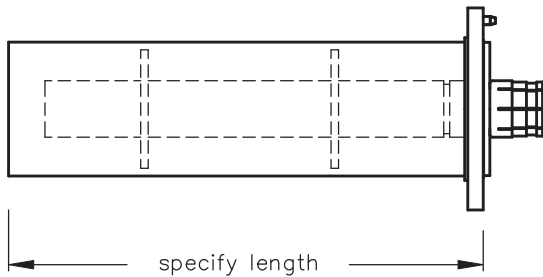
Line size 6 1/8"



Line assembly, flanged with fixed and swivel flange. Brass and copper construction. Includes one anchor insulator conductor connector, silicone O-ring and stainless steel hardware set.

**RL 618.01**

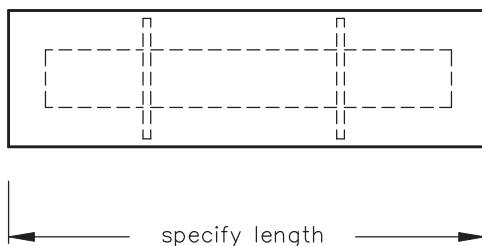
Line size 6 1/8"



Line assembly, one end fixed flanged. Includes one anchor insulator conductor connector, silicone O-ring and stainless steel hardware set.

**RL 618.02**

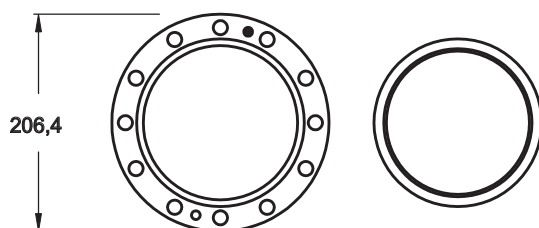
Line size 6 1/8"



Line assembly, unflanged, no insulator conductor connector or hardware.

**RL 618.04**

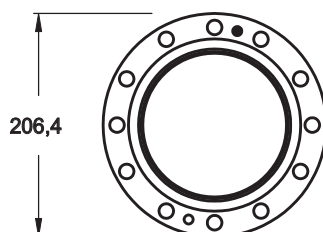
Line size 6 1/8"



Swivel EIA flange, brass. Includes only sliding and fixed ring prepared for silver brazing to outer conducting tubing.

**RL 618.06**

Line size 6 1/8"



Fixed EIA flange with silver solder ring insert for silver brazing to outer conducting tubing.

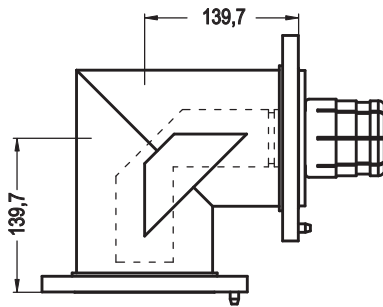
**RL 618.08**



\* All dimensions shown are in milimeters.  
\* Drawings not to scale.



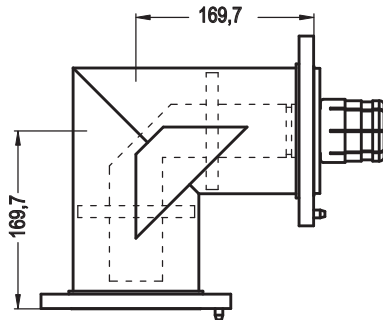
Line size 6 1/8"



Miter elbow 90°, swivel EIA flanges on both ends, reinforced outside, brass and copper construction. Includes unsupported inner conductor, one anchor insulator conductor connector, silicone O-ring and stainless steel hardware set.

**RL 618.1**

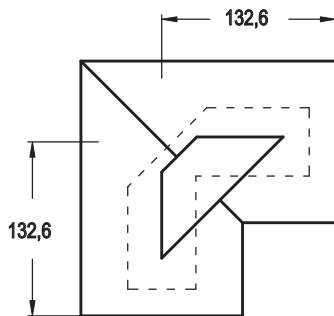
Line size 6 1/8"



Miter elbow 90°, swivel EIA flanges on both ends, reinforced outside, brass and copper construction. Includes supported inner conductor, anchor insulator conductor connector, silicone O-ring and stainless steel hardware set.

**RL 618.14**

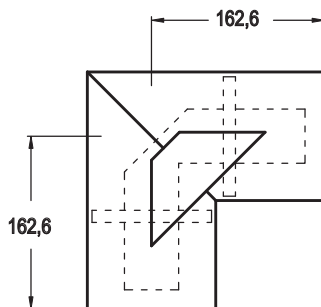
Line size 6 1/8"



Miter elbow 90°-unflanged, reinforced outside, copper construction. Includes only one unsupported inner conductor.

**RL 618.22**

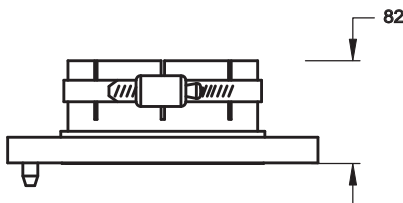
Line size 6 1/8"



Miter elbow 90°-unflanged, long legs, reinforced outside, copper construction. Includes only one supported inner conductor.

**RL 618.25**

Line size 6 1/8"



Unpressurized EIA field flange for indoor use. Includes one stainless steel hose clamp and hardware set.

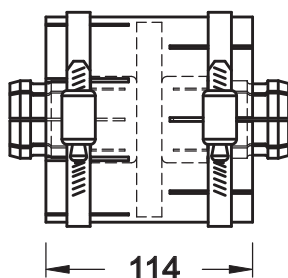
**RL 618.30**



\* All dimensions shown are in millimeters.  
\* Drawings not to scale.



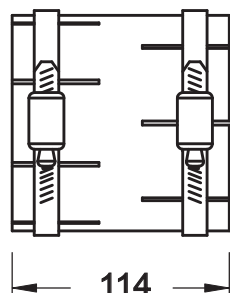
Line size 6 1/8"



Line coupling for connection of unflanged lines. Includes supported inner conductor connector and two stainless steel hose clamps.

**RL 618.32**

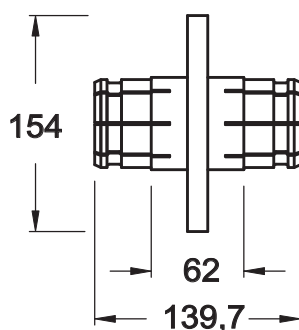
Line size 6 1/8"



Line coupling for connection of unflanged lines. No inner conductor connector. Includes two stainless steel hose clamps (does not increase outer conductor length).

**RL 618.33**

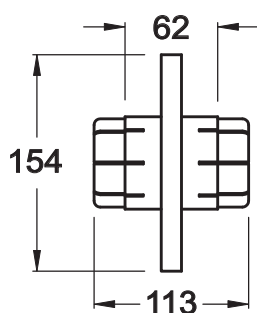
Line size 6 1/8"



Anchor insulator conductor connector, for EIA flange connection, silver plated. *Standard lenght.*

**RL 618.35**

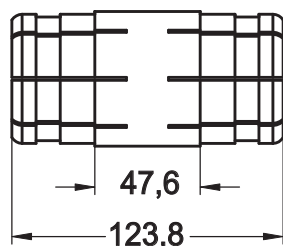
Line size 6 1/8"



Anchor insulator conductor connector, for EIA flange connection, silver plated. *Short version.*

**RL 618.36**

Line size 6 1/8"



Unsupported inner conductor connector.

**RL 618.40**

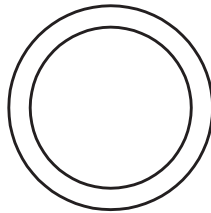
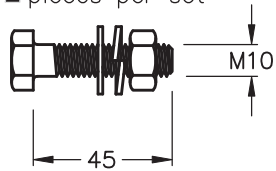


\* All dimensions shown are in milimeters.  
\* Drawings not to scale.



Line size 6 1/8"

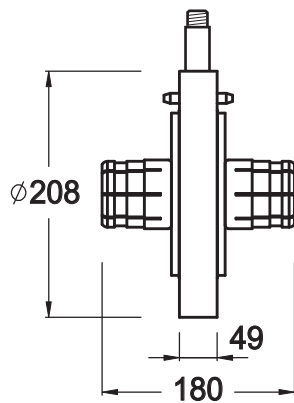
12 pieces per set



Stainless steel hardware set with silicone rubber O-ring.

**RL 618.45**

Line size 6 1/8"



Gas barrier with silicone O-ring and stainless steel hardware set.

**RL 618.50**



\* All dimensions shown are in millimeters.  
\* Drawings not to scale.