

# Assembly instruction

Series SMA

AC	03/15/00
MAP	

No. 27045

## Tools and materials required :

Stanley blade

Soldering iron 150 Watts, Solder Sn/Pb 60/40

Activated rosin flux, soldering gauge W 117

Spanner 11mm ( 74 Z-0-0-2 )

Spanner 9,5mm (3/8") ( 74 Z-0-0-1 )

Tip trimmer W 164 + guiding sleeve 11 SMA

Straight connectors for semi-rigid cables

Cable entry : clamp (solderless)

Connector type : (e.g.)

11 SMA-50-5-2

21 SMA-50-5-2

11 SMA-50-5-3

11 SMA-50-5-102

This connector  
is supplied  
in 7 parts

Cable : (e.g.)

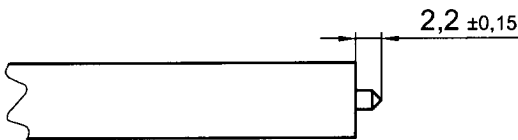
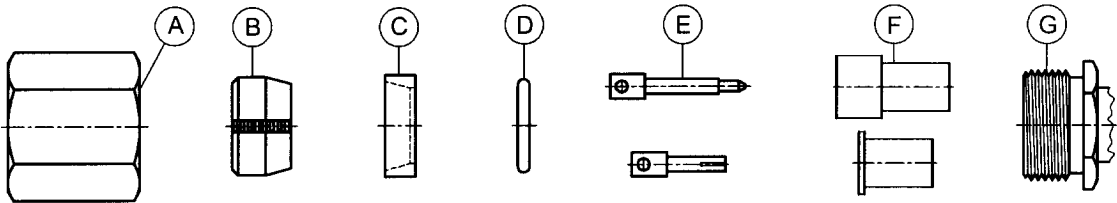
EZ 250 , RG 401

Center contact :

Soldered

Outer contact :

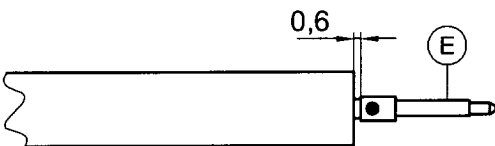
Clamped



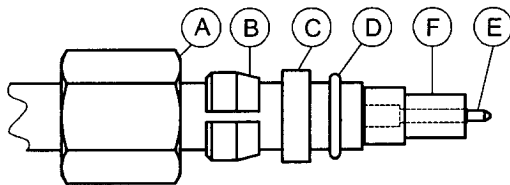
Prepare cable according to diagram.

CAUTION: Do not damage braid, dielectric and inner conductor of cable !

Point tip of inner conductor with tip trimmer W 150.

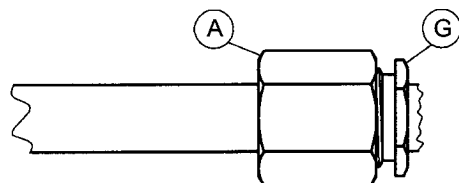


Solder pin E as shown to inner conductor of cable. To meet the dimension 0,6 use solder gauge W 117.



Slide nut A, collet B, ring C and gasket D onto cable.

Slide insulator F onto pin E.



Slide body G over insulator F and pin E.  
Screw nut A onto body G and tighten with spanner 11mm or 9,5mm (3/8").  
Recommended torque 7 Nm.

**UNCONTROLLED COPY WHEN PRINTED**

HUBER + SUHNER's skilled staff and specialised equipment are available to carry out complete RF. lead-assembly on your behalf.  
We mount your connectors on cables at economic prices ! Please contact our representative for further details of this service.



HUBER + SUHNER