

Assembly instruction Series SMA v11 No. 27164

Tools and materials required:

Stanley blade

scissors

Locator tool No. W 14 "F" bzw "M"

Straight connectors for flexible cables

Cable entry: Full-Crimp

Connector types: (e.g.)

11 SMA 50 - 2 - 27

This connector
is supplied
in 3 parts.

Suitable cables:

RG 316/U

Centre contact:

cavity 1

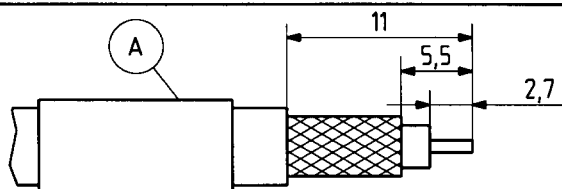
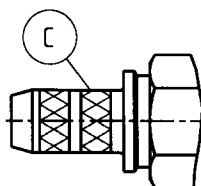
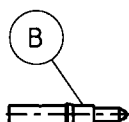
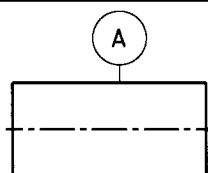
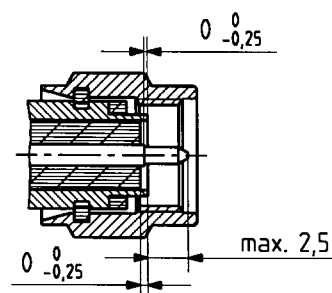
Braid:

cavity A

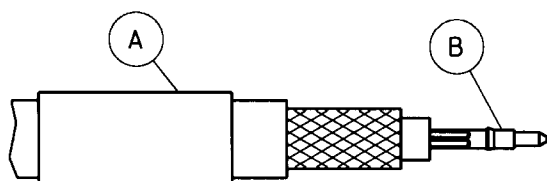
Crimp tool:

1 A

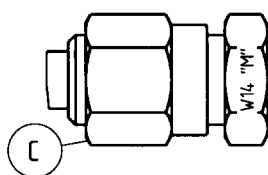
SMA-interface dimensions



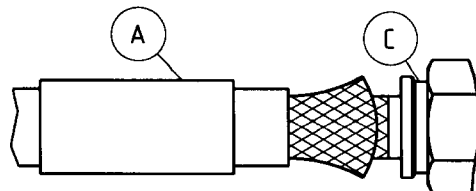
Slide ferrule A onto cable.
Prepare cable according to diagram.
Caution: Do not damage braid and inner
conductor of cable!



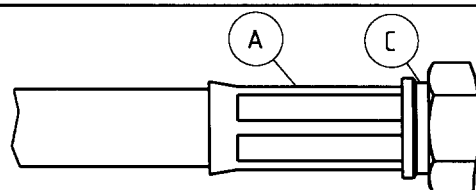
Push contact B onto the inner cable
conductor and crimp contact pin.



Mount locator tool W 14 "M" onto connector body C.



Splay out braid. Insert centre contact B into connector
body C as far stop, then push ferrule A over
cable and braid to abut connector body C.
Ensure that braid lies above the crimp neck.
Caution: Contact B doesn't engage.



Slide ferrule A over braid to abut connector body C
and crimp as close to connector body C as possible.
Remove locator tool and check interface dimensions.



HUBER + SUHNER AG CH-9100 HERISAU

Deutscher Text: siehe Rückseite