

Assembly instruction Series N

AB I 4726/SMA
14.06.99

No.27338

Tools and materials required :
Stanley blade
Scissors, screw driver
Crimp tools (see table below)
Soldering iron 100 Watts
Solder Sn/Pb 60/40 Ø 0,8 mm
activated rosin flux

Right angle plugs for flexible cables

Cable entry : crimped

Connector types : (e.g.)

16 N-50-6-11

This connector
is supplied
in 3 parts.

Suitable cables :

S 06162 D-02

Centre contact :

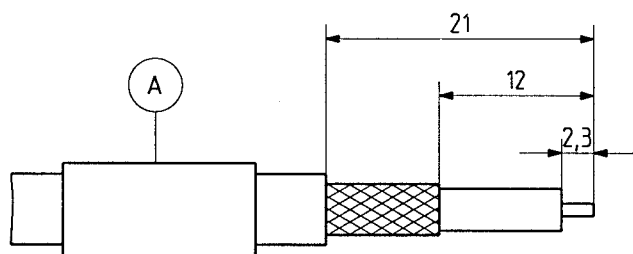
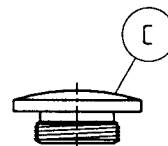
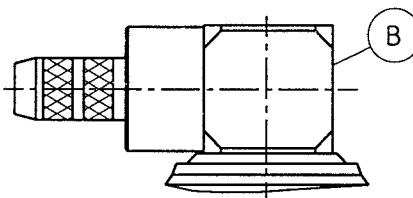
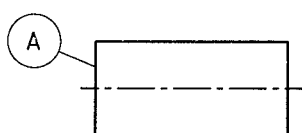
soldered

Braid :

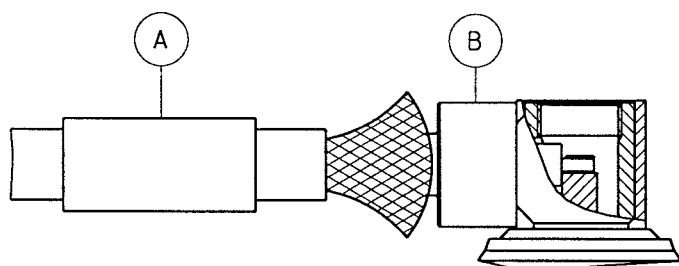
cavity 8,5

Crimp tool :

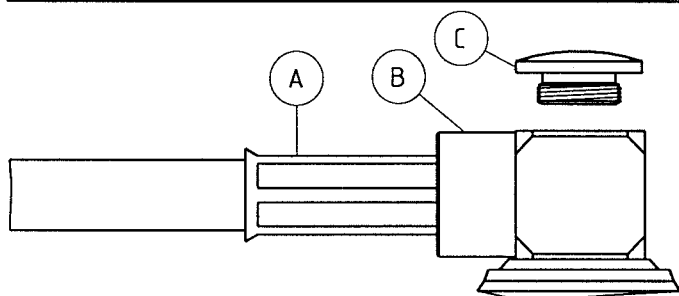
8,65



Slide ferrule A onto cable.
Prepare cable according to diagram.
CAUTION : Do not damage braid, dielectric
and inner conductor of cable!



Splay out braid and insert cable in connector body B.
CAUTION : Ensure that braid lies above the crimp neck.



Slide ferrule A over braid
and crimp as close to connector body B as possible.
Solder inner conductor to contact.
Screw on cover C.

SUHNER's skilled staff and specialised equipment are available to carry out complete R.F.lead-assembly on your behalf. We mount your connectors on cables at economic prices! Please contact our representative for further details of this service.



HUBER + SUHNER AG CH-9100 HERISAU

Deutscher Text siehe Rückseite