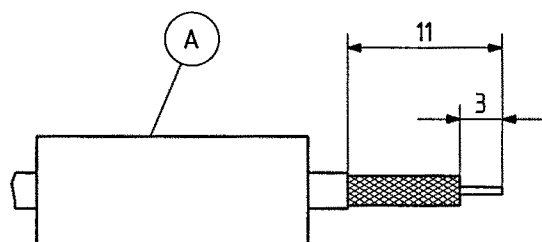
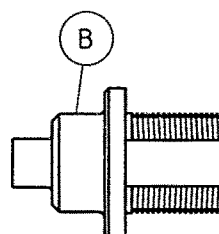
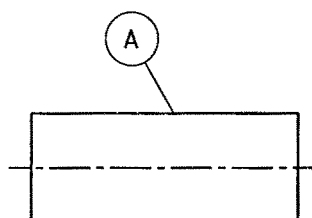
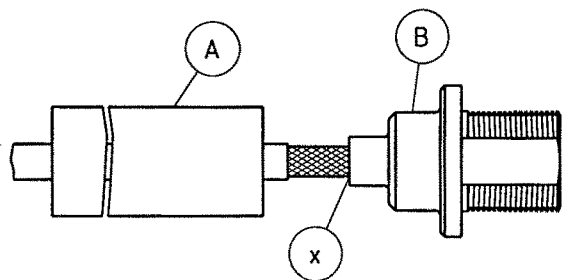


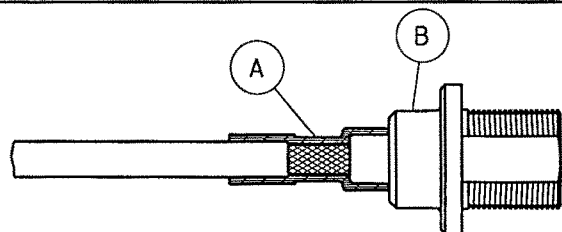
Tool and materials required:		Straight connectors for Sucoform cable
Stanley blade		Cable entry : soldered
Scissors		Connector types : (e.g.)
Soldering iron 80 to 100 Watts/220 to 240+V		24 QLA-01-2-5
Solder Sn/Pb 60/40, 0,8mm Ø		
activated rosin flux		
Alcohol, brush		
Tip trimmer No. W 164		
This connectors is supplied in 2 parts	Suitable cables :	Sucoform 86 FEP
	Centre contact :	plugged-in
	Braid :	soldered



Slide shrinking tube A onto cable.
Prepare cable according to diagram.
Form tip of inner conductor to a 90° cone using tip trimmer W 164.



Push cable into connector body B until to the positive stop.
Solder connector body B to jacket at point X.
Promptly swab soldered area with alcohol to cool joint and remove any residual flux.



Slide shrinking tube C over body B and shrink close to connector body B.

SUHNER's skilled staff and specialised equipment are available to carry out complete R.F.lead-assembly on your behalf. We Mount your connectors on cables at economic prices! Please contact our representative for further details of this service



HUBER + SUHNER AG CH-9100 HERISAU

Deutscher Text: siehe Rückseite