

# Assembly instruction

Series CT

AA 08.07.00  
4515/H.G.

No. 27408

## Tools and materials required :

Stanley blade, scissors  
Crimping tool (see table)  
Soldering iron, 60 Watts / 220° - 240°C  
Solder Sn/Pb 60/40 Ø 0,6 mm  
activated rosin flux

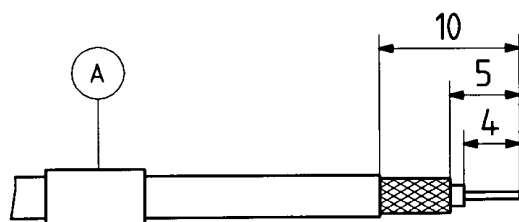
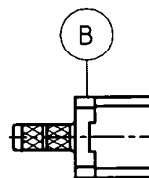
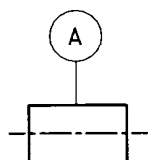
PCB cable-receptacles, straight

Cable entry : SUHNER Crimp

Connector types : (e.g.)

This connector is supplied in 2 parts	Suitable cables (e.g.)	RG 178 B/U RG 196 A/U G 01122	RG 174/U RG 188 A/U RG 316/U	K 02252 D
	Braid :	cavity A	cavity A	cavity A
	Crimp tool :	1,2,A (red)	1,2,A (red)	1,2,A (red)

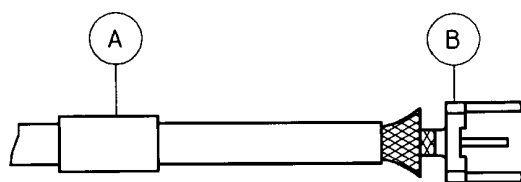
**Important :** Cable assembly must be completed prior to PC board mounting !



Slide ferrule A onto cable.  
Prepare cable according to diagram.

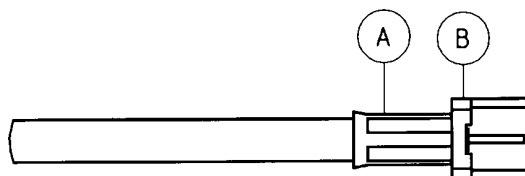
CAUTION : Do not damage braid, dielectric and inner conductor of cable !

(Presolder inner conductor.)



Splay out braid and insert cable in connector body B.

CAUTION : Ensure that braid lies above the crimp neck.



Slide ferrule A over braid to abut connector body B and crimp as close to connector body as possible.

Solder onto PC board.

SUHNER's skilled staff and specialised equipment are available to carry out complete R.F.lead-assembly on your behalf. We mount your connectors on cables at economic prices! Please contact our representative for further details of this service.



HUBER + SUHNER AG CH-9100 HERISAU

Deutscher Text siehe Rückseite