

Assembly instruction

Series CT

AA 08.07.00
4515/H.G.

No. 27411

Tools and materials required :

Stanley blade, Scissors
Soldering iron 60 Watt
Solder Sn/Pb 60/40
activated rosin flux

PCB right angle cable receptacles

Cable entry : soldered

Connector types : (e.g.)

86 CT-0-1-1

86 CT-0-2-1

This connector
is supplied in
1 part.

Suitable cables : (e.g.)

RG 178 B/U
RG 196 A/U

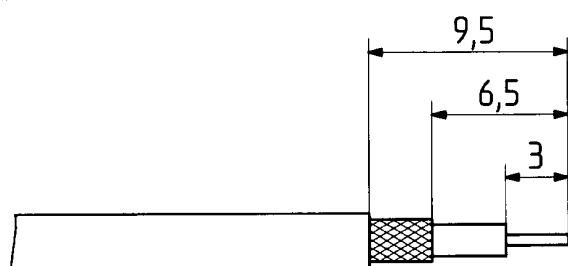
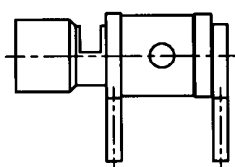
RG 174/U, RG 188 A/U, RG 316/U
RG 187 A/U, RG 179 B/U

Braid :

soldered

soldered

Caution : Cable assembly must be completed prior to PC-board mounting!

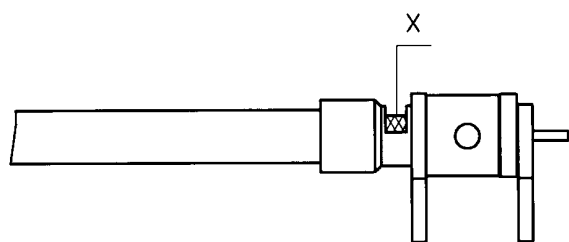


IMPORTANT : If use of shrink tube is intended,
slide tube on cable prior to stripping.

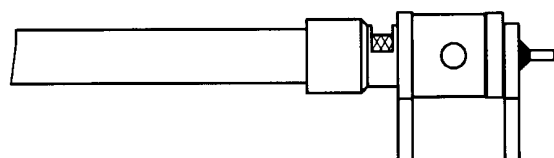
Prepare cable according to diagram.

Caution : Do not damage braid, dielectric
and inner conductor of cable!

Lightly tin inner conductor.



Push cable into connector to the positive stop.
Solder braid to body at opening X.
Immediately remove soldering iron
to avoid melting of dielectric.



Solder inner conductor to body.

Solder onto PC board.

SUHNER's skilled staff and specialised equipment are available to carry out complete R.F.lead-assembly on your behalf. We mount your connectors on cables at economic prices! Please contact our representative for further details of this service



HUBER + SUHNER AG CH-9100 HERISAU

Deutscher Text siehe Rückseite