

Assembly instruction Series SMB, SMC, SMS^{V3} No. 3039

Tools and materials required:

Small soldering iron, 40 Watts/220 to 240° C
Solder Sn/Pb 60/40, activated rosin flux
Stanley blade, scissors
Spanner 6 mm SUHNER 74 Z-0-0-8

Angle plug for flexible cables

Cable entry: Pressure sleeve

Connector types: (e.g.)

16 SMB/C/S 50-1-4c
16 SMB/C/S 50-1-5c
16 SMB/C/S 50-2-5c
16 SMB/C/S 50-2-6c

This connector
is supplied
in 9 parts

Suitable cables e.g.:

RG 178 B/U
RG 196 A/U
G 01122

RG 174/U
RG 188 A/U
G 02232-1 bis -10

Centre contact: captive

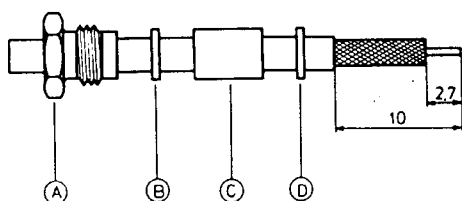
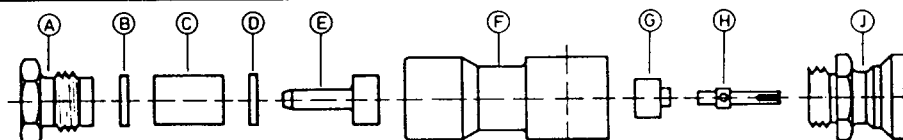
soldered

soldered

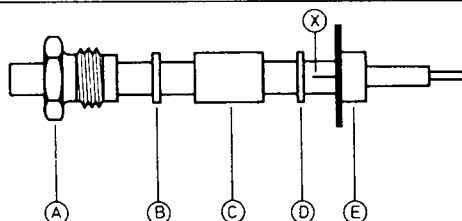
Braid:

clamped

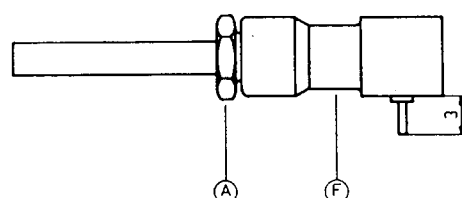
clamped



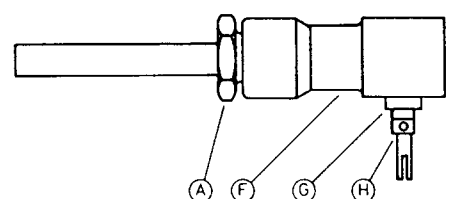
Remove connector body part J using a 6 mm spanner.
Slide cable entry nut A, washer B, rubber gasket C and washer D on to cable.
Prepare cable according to diagram.
Do not damage inner conductor and braid.



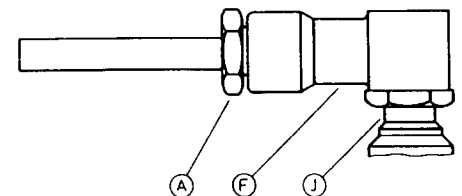
Splay out braid and slide neck of pressure sleeve E underneath the braid.
Cut off overlapping braid wires.
⊗ Should this operation cause difficulties, cut cable sheath axially over a length of 3 mm.
In some cases, two slots are necessary.



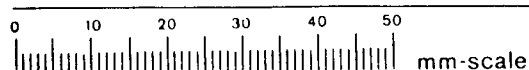
Slide prepared cable end into connector body F until the inner conductor of cable protrudes 3 mm.
Secure cable by tightening cable entry nut A.
(torque 1Nm)



Lightly tin inner conductor of cable and bore hole of contact pin H.
Slide insulator G over inner conductor.
Heat contact pin H and introduce inner conductor of cable.
Remove soldering iron quickly in order to avoid heat damage to cables with PE-dielectric.
Surface of contact pin H must remain clean.



Screw together body parts F and J using a 6 mm spanner.
(74 Z-0-0-8)
(torque 1Nm)



SUHNER's skilled staff and specialised equipment are available to carry out complete R.F. lead-assembly on your behalf.
We mount your connectors on cables at economic prices! Please contact our representative for further details of this service.



HUBER + SUHNER Ltd. CH-9100 HERISAU

Switzerland

Deutscher Text: siehe Rückseite