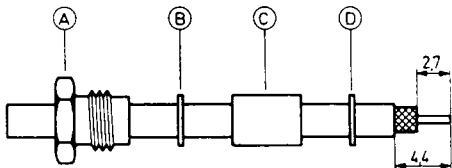
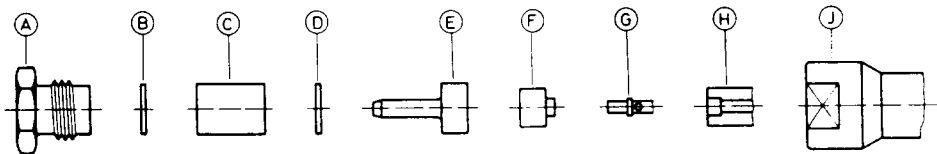
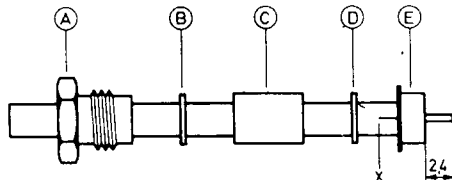


Assembly instruction Series SMB, SMC, SMS E 6 No. 3041

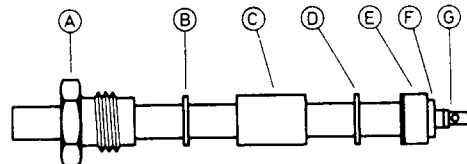
Tools and materials required: Stanley blade Scissors Soldering iron 70 Watts Solder Sn/Pb 60/40 \varnothing 0,8 mm activated rosin flux Spanner 6 mm (74 Z-0-0-8)		Straight connectors for flexible cable		
		Cable entry: Screw-type (Pressure-sleeve)		
		Connector types: (e. g.) 11 SMB-50-1-6c 11 SMC-50-1-6c 21 SMB-50-1-4c 21 SMC-50-1-4c 24 SMB-50-1-6c 24 SMC-50-1-6c		
This connector is supplied in 9 parts	Suitable cables e. g.	RG 178B/U		
	Centre contact:	soldered		
	Braid:	screwed		



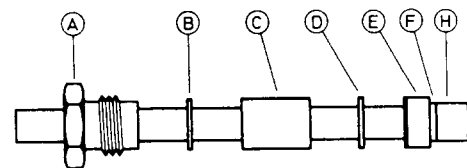
Slide cable entry nut A, washer B, rubber gasket C and washer D onto cable.
Prepare cable according to diagram.
Do not damage inner conductor and braid.



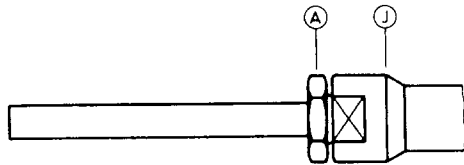
Slide neck of pressure sleeve E underneath the braid until the inner conductor of cable protrudes 2,4 mm.
Cut off overlapping braid wires.
x Should this operation cause difficulties, cut cable sheath axially over a length of 3 mm.
In some cases, two slots are necessary.



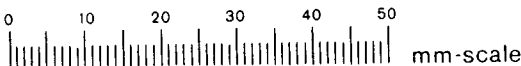
Lightly tin inner conductor of cable and bore hole of contact pin G using a 70 W soldering iron.
Slide insulator F over inner conductor.
Heat contact pin G and introduce inner conductor of cable.
Remove soldering iron quickly in order to avoid heat damage to cables with PE-dielectric.
Surface of contact pin G must remain clean.



Slide insulator H over contact pin G (if not already placed in connector body J).



Push prepared cable into connector body J and tighten nut A.



SUHNER's skilled staff and specialised equipment are available to carry out complete R.F. lead-assembly on your behalf.
We mount your connectors on cables at economic prices! Please contact our representative for further details of this service.