

Assembly instruction Series SMA _{v2} No. 3071

Tools and materials required:

Stanley blade
Scissors
Small soldering iron 40 Watts
Solder Sn/Pb 60/40
activated rosin flux
Contact holder No. W 54
Locator tool No. W 14 "F" and "M"
Spanner 8mm (74 Z 0-0-16)

Straight connectors for flexible cables

Cable entry: Screw-typ

Connector types: (e.g.)

11 SMA 50 - 3 - 7

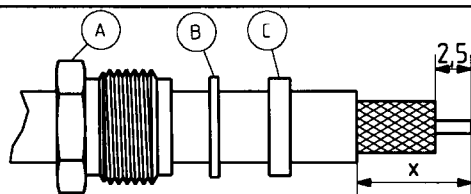
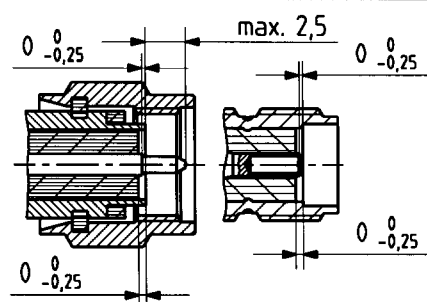
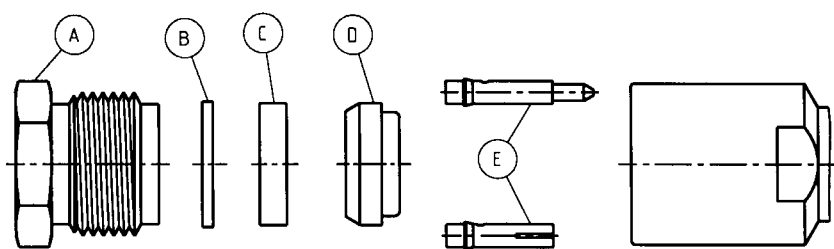
21 SMA 50 - 3 - 7

24 SMA 50 - 3 - 7

This connector is
supplied in 6 parts

Suitable cables e.g.

RG 58 C/U

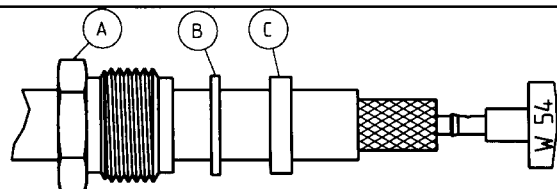


Slide nut A, washer B and gasket C onto cable.

Prepare cable according to diagram.

CAUTION: Do not damage braid and inner conductor of cable.

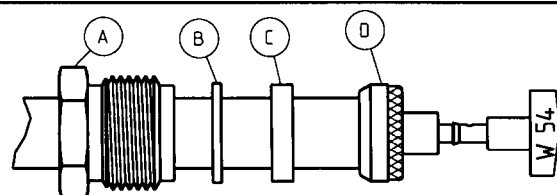
Typ :	x
11/21 SMA 50-3- ...	7 mm
24 SMA 50-3-...	9 mm



Push contact E onto contact holder W 54.

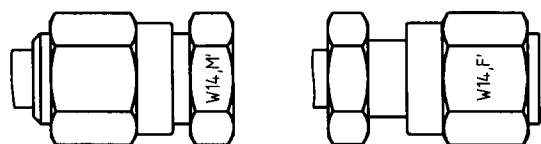
Heat contact E using a dry soldering iron.

Flow small amount of solder into bore hole of contact, introduce inner conductor of cable and solder to contact. Clean contact E and cable dielectric, remove excess solder.

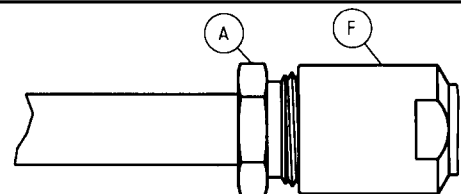


Position braid clamp D so that its shoulder fits against cable sheath.

Fold back braid over clamp D and trim overlapping braid.



Mount locator tool W 14 onto connector body F ("M" for male, "F" for female)



Push prepared cable into connector body F, and tighten nut A. (torque 4Nm)

Remove locator tool W 14 and check interface dimensions.

SUHNER's skilled staff and specialised equipment are available to carry out complete R.F.lead-assembly on your behalf. We mount your connectors on cables at economic prices! Please contact our representative for further details of this service



HUBER + SUHNER AG CH-9100 HERISAU

Deutscher Text: siehe Rückseite