

Tools and materials required:

Soldering iron 80 W / 220–240°C
Solder Sn/Pb 60/40, activated rosin flux
Stanley blade
Spanner 10 mm
Spanner 9,6 mm SUHNER 74Z-0-0-1

Straight cable connector

Cable entry: cable clamp

Connector types: (e.g.)

11 SHV 50-3-10c / -3-15c / -4-10c / -4-15c
21 SHV 50-3-10c / -3-15c / -4-10c / -4-15c
25 SHV 50-3-10c / -3-15c / -3-11c / -3-16c
25 SHV 50-4-10c / -4-15c / -4-11c / -4-16c

This connector
is supplied
in 6 parts

Suitable cables e.g.

Centre contact: capt.

Braid:

RG 58 C/U

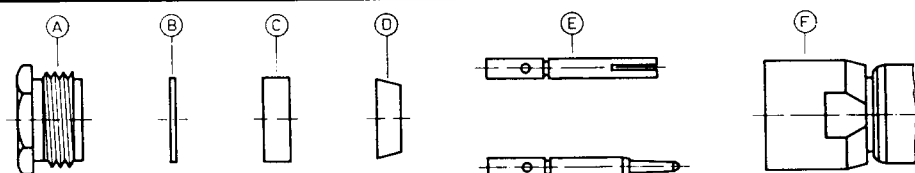
soldered

clamped

RG 59 B/U

soldered

clamped



Slide nut A, washer B and gasket C onto cable.

Prepare cable according to diagram.

Do not damage braid and inner conductor of cable!

Slide braid clamp D over the braid until shoulder abuts the cable sheath.

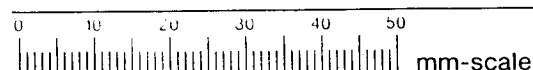
Fold back braid over clamp D and trim overlapping braid.

Heat contact E with soldering iron. Flow small amount of solder into bore hole of E, introduce inner conductor of cable and solder to contact. Remove soldering iron immediately to avoid excessive heat.

Control distance 0.3 mm!

Push prepared cable into body F until contact engages perceptibly.

Push gasket C and washer B into body F and tighten cable entry nut A using a spanner.



SUHNER's skilled staff and specialised equipment are available to carry out complete R. F. lead-assembly on your behalf. We mount your connectors on cables at economic prices! Please contact our representative for further details of this service.



HUBER+SUHNER LTD. CH-9100 HERISAU

Deutscher Text: siehe Rückseite