

Tools and materials required:

Crimp tool 1A
Stanley blade, scissors

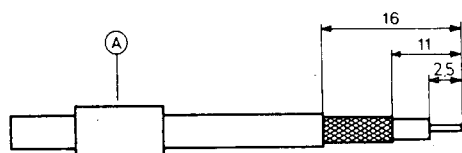
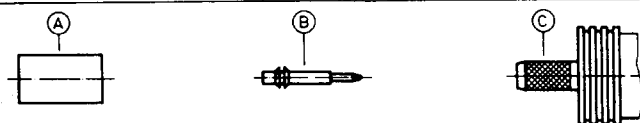
Straight connector for flexible cable

Cable entry: SUHNER Full-Crimp

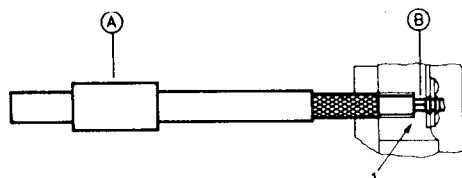
Connector types: (e.g.)

11 QLA-01-2-8c
11 QLA-01-2-9c

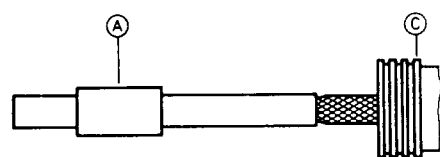
This connector is supplied in 3 parts	Suitable cables e.g.:	RG 188 A/U G 02232 K 02252d	RG 316/U	
	Centre contact/capt.:	cavity 1		
	Braid:	cavity A		
	Crimp tool:	1A red		



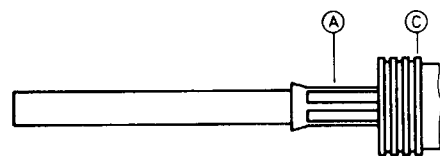
Slide ferrule A onto cable, strip cable according to diagram.
Do not damage braid.



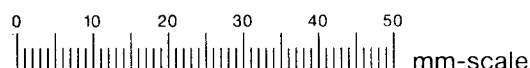
Insert inner conductor of cable into B
and crimp with insert 1.



Splay out braid.
Insert centre contact B into connector body C as far as stop.
Ensure that braid lies above the crimp neck.



Slide ferrule A over braid and crimp
as close to connector body C as possible.



SUHNER's skilled staff and specialised equipment are available to carry out complete R. F. lead-assembly on your behalf.
We mount your connectors on cables at economic prices! Please contact our representative for further details of this service.



HUBER+SUHNER LTD. CH-9100 HERISAU