

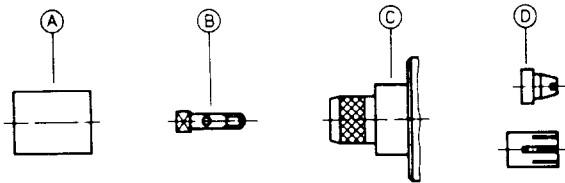
Assembly instruction

Series 7/16

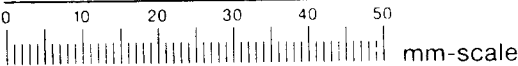
S3

No. 9017

<b>Tools and materials required:</b> Stanley blade Scissors Crimp tool (see table below) Screwdriver Assembly tool 74 Z-0-0-89, No. 89		<b>Straight connector for flexible cable</b>												
		<b>Cable entry:</b> SUHNER Full Crimp												
		<b>Connector types: (e. g.)</b> <table><tr><td>11-716-50-7-1c</td><td>25-716-50-7-1c</td><td>11-716-50-7-5c</td></tr><tr><td>11-716-50-7-2c</td><td>25-716-50-7-2c</td><td></td></tr><tr><td>21-716-50-7-1c</td><td></td><td></td></tr><tr><td>21-716-50-7-2c</td><td></td><td></td></tr></table>			11-716-50-7-1c	25-716-50-7-1c	11-716-50-7-5c	11-716-50-7-2c	25-716-50-7-2c		21-716-50-7-1c			21-716-50-7-2c
11-716-50-7-1c	25-716-50-7-1c	11-716-50-7-5c												
11-716-50-7-2c	25-716-50-7-2c													
21-716-50-7-1c														
21-716-50-7-2c														
This connector is supplied in 4 parts	<b>Suitable cables e. g.</b>	RG 213/U RG 214/U												
	<b>Centre contact:</b> capt.	cavity 3		soldered										
	<b>Braid:</b>	cavity D												
	<b>Crimp tool:</b>	3 D (violet)												



	Slide ferrule A onto cable, prepare cable according to diagram. Do not damage braid.
	Push centre contact over inner conductor of cable. Crimp contact to cable using cavity 3 of the crimp tool.
	Splay out braid by a conical movement of the crimp spigot on body C. Push spigot of body C under braid, push firmly against dielectric and rotate slowly until the inner contact is engaged in its seat.
	<b>Female connector:</b> Screw female contact D on threaded end of inner conductor B. Torque max. 4,5 cmkp using tool W 89. <b>Male connector:</b> Screw male contact on threaded end of inner conductor B, and tighten with screwdriver. Screw nut A into body C and tighten fully using suitable spanners. Slide ferrule A over braid to abut body C and crimp as close to body C as possible. Use cavity D of the crimping tool.



SUHNER's skilled staff and specialised equipment are available to carry out complete R. F. lead-assembly on your behalf. We mount your connectors on cables at economic prices! Please contact our representative for further details of this service.