

# Assembly instruction Series 7/16 U7 No. 9018

## Tools and materials required:

Stanley blade  
Scissors  
Spanner 16 mm AF/22 mm AF  
Spanner 23 mm AF  
Screwdriver  
Soldering iron 100 Watts  
Solder Sn/Pb 60/40 Ø 0,8 mm, activated rosin flux  
Assembly tool 74 Z-0-0-89, No. 89

## Straight connector for flexible cable

### Cable entry: Pressure Sleeve

#### Connector types: (e. g.)

11-716-50- 7-3c	21-716-50- 7-3c	25-716-50- 7-3c
11-716-50- 7-4c	21-716-50- 7-4c	25-716-50- 7-4c
11-716-50- 9-3c	21-716-50- 9-3c	25-716-50- 9-3c
11-716-50-12-3c	21-716-50-12-3c	25-716-50-12-3c

This connector  
is supplied  
in 8 parts

#### Suitable cables e. g.

#### Centre contact: capt.

#### Braid:

RG 213/U  
RG 214/U

soldered

clamped

RG 217/U

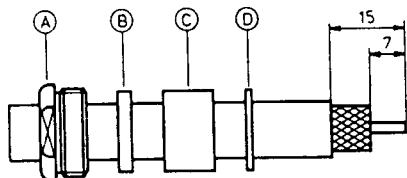
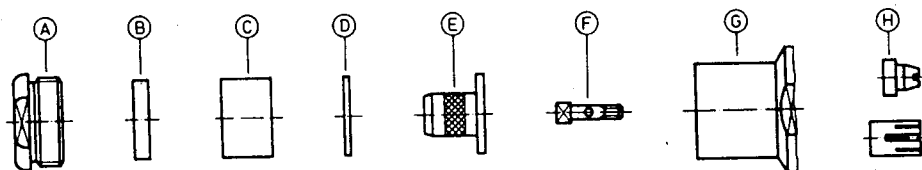
soldered

clamped

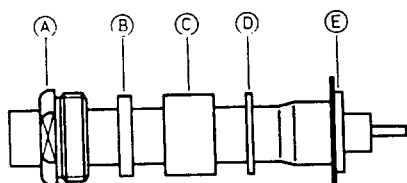
G 12 232

soldered

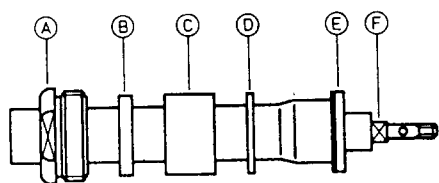
clamped



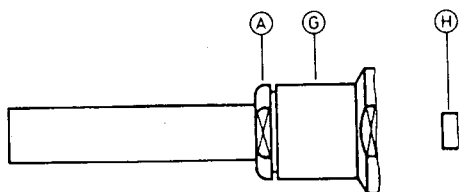
Slide nut A, ring B, gasket C and washer D onto cable.  
Prepare cable according to diagram.  
Do not damage braid and inner conductor of cable!



Splay out braid and push sleeve E underneath the braid.  
Cut off braid wires along rim of sleeve E.



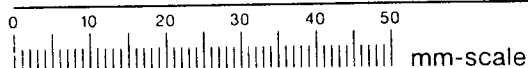
Solder contact pin F to cable centre conductor.  
Push washer D, gasket C and ring B forward against  
sleeve E.



Push prepared assembly into body G. Push body G firmly  
against cable and rotate slowly until the inner contact is  
engaged in its seat.

**Female connector:** Screw female contact H on threaded  
end of inner conductor F. Torque to max. 4,5 cmkp (45 Ncm)  
using tool W 89.

**Male connector:** Screw male contact on threaded end of  
inner conductor F, and tighten with screwdriver. Screw nut A  
into body G and tighten fully using suitable spanners.



SUHNER's skilled staff and specialised equipment are available to carry out complete R. F. lead-assembly on your behalf.  
We mount your connectors on cables at economic prices! Please contact our representative for further details of this service.



**HUBER+SUHNER LTD. CH-9100 HERISAU**

Deutscher Text: siehe Rückseite