

Assembly instruction Series 7/16 Combi-System_{D11} No. 9085

Tools and materials required:

Stanley blade
Scissors, Screw driver
Spanner SW13 (74 Z-0-0-37)
Spanner SW11 (74 Z-0-0-2)
Soldering iron 100 Watts
Solder Sn/Pb 60/40 \varnothing 0,8 mm
activated rosin flux

Straight and angle connectors for flexible cable

Cable entry: Screw-type (F1+F3)

Connector types: (e. g.)

71Z-0-3-23

71Z-0-3-24

This connector
is supplied
in 7 parts

Suitable cables e. g.

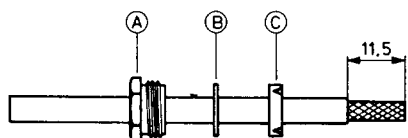
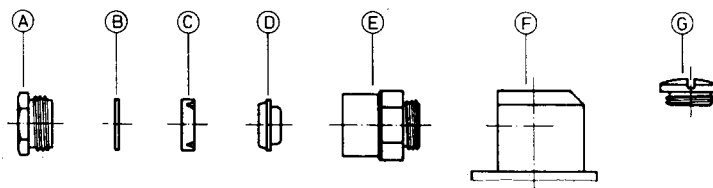
RG 58 C/U
RG 223/U

Centre contact: captive

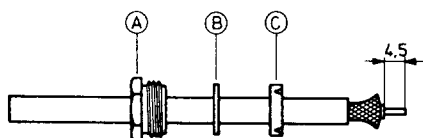
soldered

Braid:

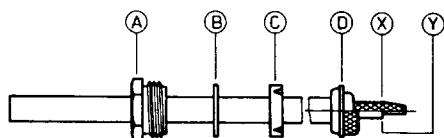
screwed



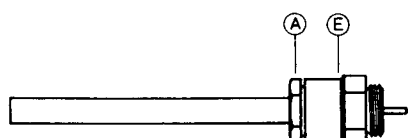
Slide nut A, washer B and gasket C onto cable.
Prepare cable according to diagram.
CAUTION: Do not damage braid!



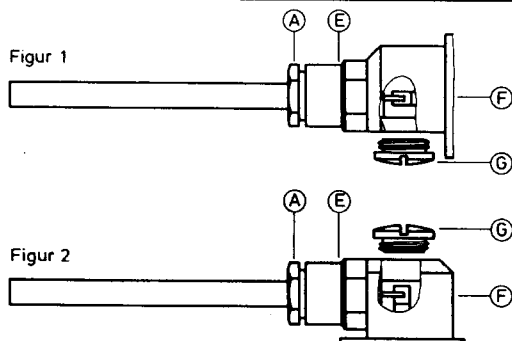
Push braid back and widen it slightly but do not comb it out.
Cut back dielectric 4,5 mm perpendicular to cable axis.



Taper braid towards center conductor.
Position braid clamp D so that its shoulder fits against cable sheath, see diagram section X.
Fold back braid over clamp D and trim overlapping braid, see diagram section Y.



Push gasket C and washer B forward against clamp D.
Push prepared assembly into body E and tighten nut A with a spanner.



Final assembly according to:
Fig. 1 = straight connector
Fig. 2 = angled connector

Screw prepared cable with entry parts A and E into connector head F and tighten fully.
Solder inner conductor to contact and screw on cover G.



SUHNER's skilled staff and specialised equipment are available to carry out complete R.F. lead-assembly on your behalf.
We mount your connectors on cables at economic prices! Please contact our representative for further details of this service.



HUBER + SUHNER Ltd. CH-9100 HERISAU
Switzerland

Deutscher Text: siehe Rückseite