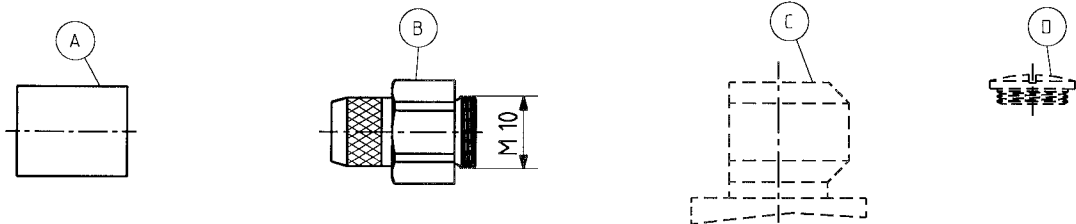


Tools and materials required: Stanley blade Scissors, Screw driver Crimp tool (see table below) Spanner SW 13 (74Z-0-0-37) Soldering iron 100 Watt Solder Sn/Pb 60/40 $\varnothing$ 0,8mm activated rosin flux		Cable entry: 71 Z 0 – 7 – 21 /– 22 for straight and right angle connectors	
This connector is supplied in 2 parts.	Suitable cables	RG 213/U / RG 214/U	
	Centre contact:	soldered	
	Braid:	cavity D	
	Crimp tool:	3 D (violet)	



	Slide ferrule A onto cable. Prepare cable according to diagram. CAUTION: Do not damage braid and inner conductor of cable!
	Splay out braid and insert cable in connector body B. Ensure that braid lies above the crimp neck.
	Slide ferrule A over braid and crimp as close to connector body B as possible.
	Final assembly according to: Fig.1 = straight connector Fig.2 = right angle connector  Screw prepared cable with entry parts A and B into connector head C and tighten fully (11 Nm). Solder inner conductor to contact and screw on cover D.

SUHNER's skilled staff and specialised equipment are available to carry out complete R.F.lead-assembly on your behalf.  
We mount your connectors on cables at economic prices! Please contact our representative for further details of this service.

