

Assembly instruction Series 7/16 Combi-System D₁₁ No. 9088

Tools and materials required:

Stanley blade
Scissors, Screw driver
Spanner SW16 (74 Z-0-0-3)
Spanner SW18
Soldering iron 100 Watts
Solder Sn/Pb 60/40 \varnothing 0,8 mm
activated rosin flux

Straight and angle connectors for flexible cable

Cable entry: Screw-type (Pressure Sleeve)

Connector types: (e. g.)

71Z-0-7-23
71Z-0-7-24
71Z-0-7-25

This connector
is supplied
in 8 parts

Suitable cables e. g.

RG 213/U
RG 214/U

K 072 52

Centre contact: captive

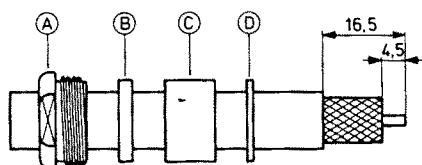
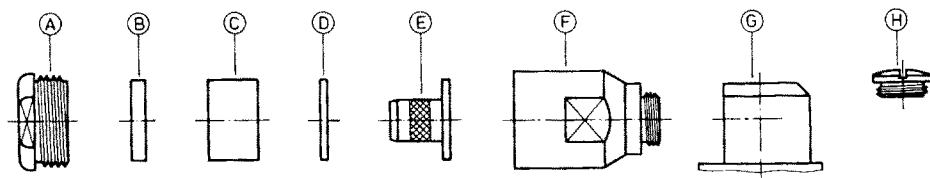
soldered

soldered

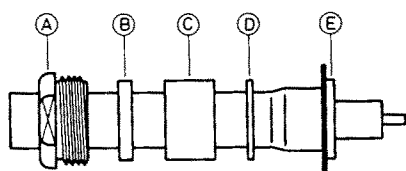
Braid:

screwed

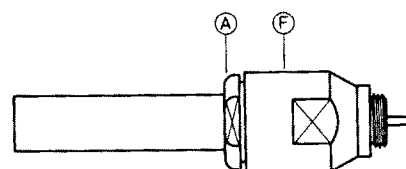
screwed



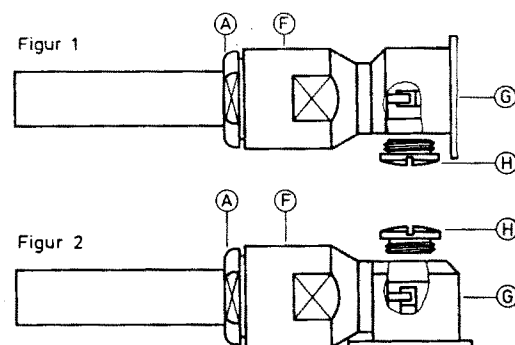
Slide nut A, ring B, gasket C and washer D onto cable.
Prepare cable according to diagram.
CAUTION: Do not damage braid and inner conductor of cable!



Splay out braid and push sleeve E underneath the braid.
Cut off braid wires along rim of sleeve E.

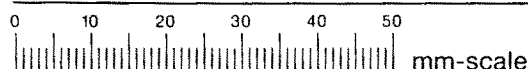


Push washer D, gasket C and ring B forward against sleeve E.
Push prepared assembly into body F and tighten nut A with a spanner.



Final assembly according to:
Fig. 1 = straight connector
Fig. 2 = angled connector

Screw prepared cable with entry parts A and F into connector head G and tighten fully.
Solder inner conductor to contact and screw on cover H.



SUHNER's skilled staff and specialised equipment are available to carry out complete R. F. lead-assembly on your behalf.
We mount your connectors on cables at economic prices! Please contact our representative for further details of this service.



HUBER+SUHNER LTD. CH-9100 HERISAU

Deutscher Text: siehe Rückseite