

Assembly instruction Series PC7/N^{U8} No. 9089

Tools and materials required:
Stanley blade
Tip trimmer No. W 150
Mounting-tool (see table below)
Splay-tool No. W 85
Different-sized spanners

Straight connectors for semi-rigid cable

Cable entry: Screw-type

Connector types: (e. g.)

11 PC 7-50-5-1c
11 TNC 50-5-39c
24 BNC 50-5-39c

11 N-50-7-52c

71 Z 0-8-1 with
11 USC 50-7-1c

This connector
is supplied
in 4 parts

Suitable cables e. g.

Centre contact:

Braid:

Mounting-tool:

EZ 250 (.250")

resilient

screwed

No. W 83

SR 7

resilient

screwed

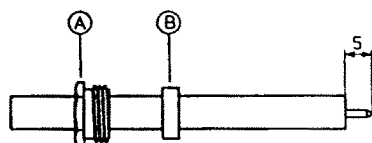
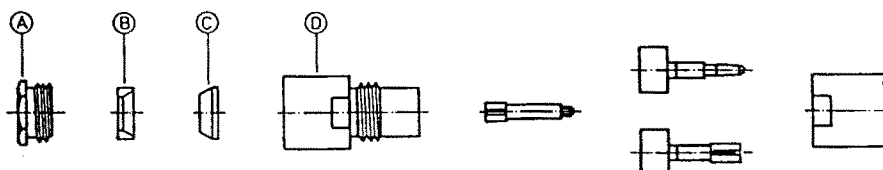
No. W 84

UT-390

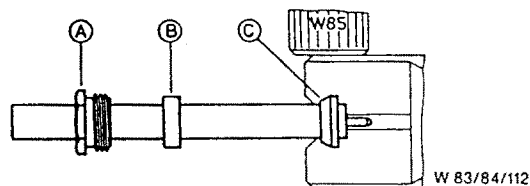
resilient

screwed

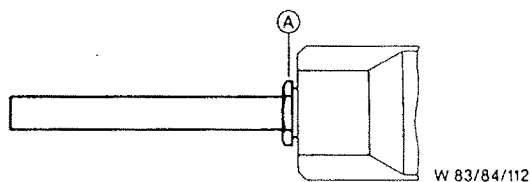
No. W 112



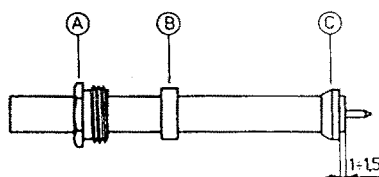
Slide nut A and ring B onto cable.
Prepare cable according to diagram.
CAUTION: Do not damage inner conductor.
Trim end of inner contact using tip trimmer W 150.



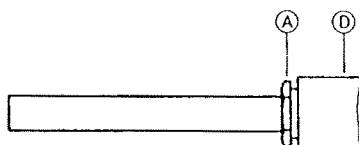
Place ring C in mounting tool.
Slot of ring C must be visible in opening of tool.
Push splay tool W 85 through opening of tool
into slot ring C, rotate splay tool 90° to open ring C.
Push cable fully into ring,
rotate splay tool back and remove cable from tool.



Push cable into rear opening of tool
and tighten nut A using an appropriate spanner.
This will give correct position of ring C.



Remove cable from tool and check dimension 1±1,5 mm.



Push prepared cable into connector body D
and tighten nut A using an appropriate spanner.
(torque 10 Nm)



SUHNER's skilled staff and specialised equipment are available to carry out complete R.F. lead-assembly on your behalf.
We mount your connectors on cables at economic prices! Please contact our representative for further details of this service.



HUBER + SUHNER Ltd. CH-9100 HERISAU

Switzerland

Deutscher Text: siehe Rückseite