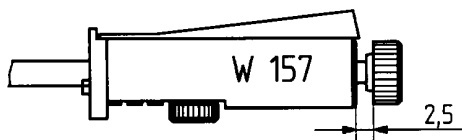
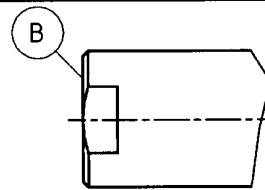
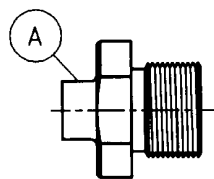
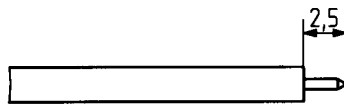


Assembly instruction Series PC 3,5 AA 26.06.00 4726/KRI No. 09165

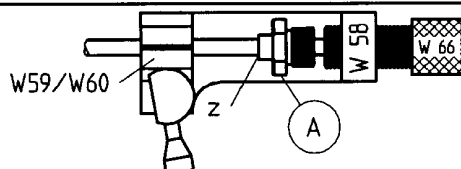
Tools and materials required: Soldering iron 80 to 100 Watts/ 220 to 240°C Solder Sn/Pb 60/40 0,8mm Ø activated rosin flux Alcohol, brush, blade (74 Z-0-0-68) SR cable stripping tool No. W 157 Soldering fixture No. W 58 Inserts No. W 59 / W 60 Locator tool No. W 66 Spanners SW 7mm		Straight connectors for copper jacket cable					
		Cable entry: soldered					
		Connector types: (e.g.) <table><tr><td>11 PC 3,5-50-2-2</td><td>11 PC 3,5-50-3-2</td></tr><tr><td>21 PC 3,5-50-2-2</td><td>21 PC 3,5-50-3-2</td></tr><tr><td>24 PC 3,5-50-2-1</td><td>24 PC 3,5-50-3-1</td></tr></table>		11 PC 3,5-50-2-2	11 PC 3,5-50-3-2	21 PC 3,5-50-2-2	21 PC 3,5-50-3-2
11 PC 3,5-50-2-2	11 PC 3,5-50-3-2						
21 PC 3,5-50-2-2	21 PC 3,5-50-3-2						
24 PC 3,5-50-2-1	24 PC 3,5-50-3-1						
This connector is supplied in 2 parts.	Suitable cables e.g.	EZ 86 (.086")	EZ 141 (.141")				
	Braid:	soldered	soldered				



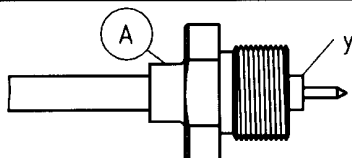
Cut cable end perpendicular to cable axis.
 Cut back copper jacket using cable stripping tool W 157.
 See instruction sheet No. 9144 for detailed description.
 The tool must be set for 2,5mm stripping dimension.



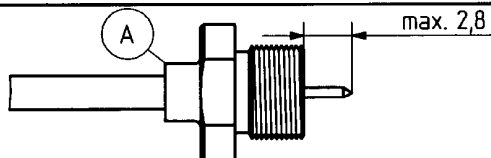
Remove dielectric flush with copper jacket using a blade.
 Trim inner conductor using needle point file or abrasive paper.
 Check dimension 2,5mm.



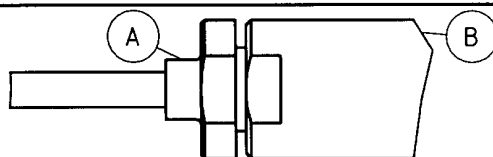
Slide connector part A over cable. Fix cable in soldering fixture W 58 using inserts W 59 / W 60. Tighten locator tool W 66 fully against cable. Push connector part A against locator tool W 66 and solder in this position. Immediately cool down and clean with alcohol.



Cut off dielectric at plane y carefully using a blade.
 Important: This operation must be performed only after the cable has reached temperature stability at room temperature!



Check dimension 2,8mm,
 centre conductor must be exactly centred.



Carefully screw body A into connector housing B using a 7mm spanner.
 (torque 3 Nm)

SUHNER's skilled staff and specialised equipment are available to carry out complete R.F.lead-assembly on your behalf. We mount your connectors on cables at economic prices! Please contact our representative for further details of this service



HUBER + SUHNER AG CH-9100 HERISAU

Deutscher Text: siehe Rückseite