

Assembly instruction Series 1023_{v10} No. 9191

Tools and materials required:

Stanley blade

Scissors

Crimp tool (see table below)

Straight connector for flexible cables

Cable entry: SUHNER Full Crimp

Connector types: (e.g.)

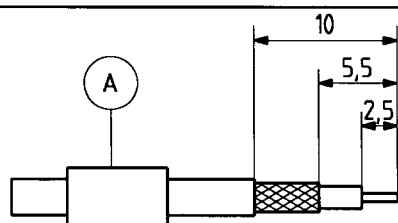
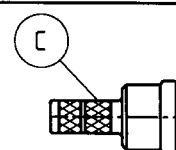
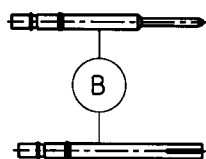
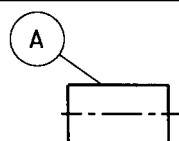
11-1023-C50-2-2c

11-1023-C50-2-3c

21-1023-C50-2-2c

21-1023-C50-2-3c

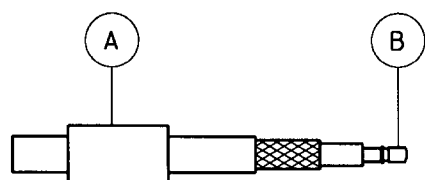
This connector is supplied in 3 parts.	Suitable cables e. g.:	K02252-d	RG 316/U	
	Centre contact:	cavity 1	cavity 1	
	Braid:	cavity A	cavity A	
	Crimp tool:	1 A red	1 A red	



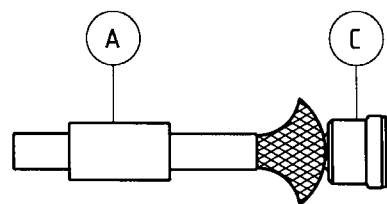
Slide ferrule A onto cable.

Prepare cable according to diagram.

CAUTION: Do not damage braid and inner conductor of cable!

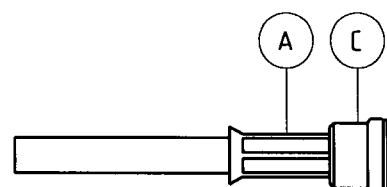


Push contact B over inner conductor of cable to abut cable dielectric and crimp.



Splay out braid.

Insert centre contact B into connector body C as far as stop. Ensure that braid lies above the crimp neck.



Slide ferrule A over braid

and crimp as close to connector body C as possible.

SUHNER's skilled staff and specialised equipment are available to carry out complete R.F. lead-assembly on your behalf. We mount your connectors on cables at economic prices! Please contact our representative for further details of this service.



HUBER + SUHNER LTD. CH-9100 HERISAU

Deutscher Text: siehe Rückseite